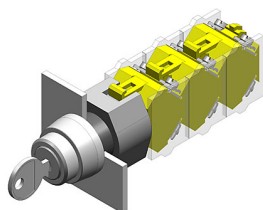


# EAO – Your Expert Partner for Human Machine Interfaces

## 704.124.0 - Keylock switch actuator 3 positions

### 704.124.0 - Keylock switch actuator 3 positions



*Attention: The preview is based on a sample product. This can differ from your current configuration.*

#### Mounting

Mounting cut-out	Ø 22.5 mm
Design	raised

#### Front

Front shape	round
Front dimension	Ø 29 mm
Front ring material	Aluminium
Front ring colour	chrome

#### Other Attributes

Weight	0.070 kg
--------	----------

#### Operating-/Indication part

Switching angle	C = 42°, B = 42°
-----------------	------------------

#### IP-Rating

Front protection	IP 65
------------------	-------

#### Actuator

Key remove	C + A
Switching action	Maintained - Rest - Momentary

#### Switching element

Rotary positions	3
------------------	---

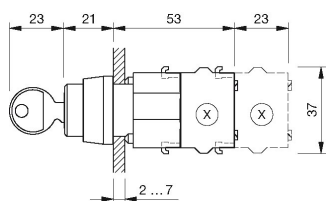
#### Function

Keylock switch
----------------

# EAO – Your Expert Partner for Human Machine Interfaces

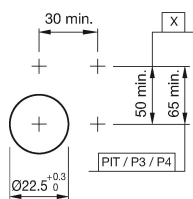
## 704.124.0 - Keylock switch actuator 3 positions

### Dimensions



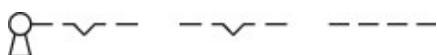
X = Screw terminal

### Mounting cut-outs

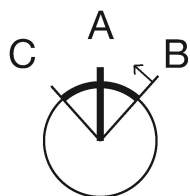


PIT = Push-in terminal

### Wiring diagram



### Switching positions



### Additional information

Locknumbers 251, lock type Ronis

Two keys are supplied with each key lock switch

Further lock numbers see «Technical data»

Max. 3 switching elements can be clipped on

### Legend

Switching action: A = Rest, B = Momentary, C = Maintained