



# SAW Components

Data Sheet B4050

Data Sheet

A large, stylized, 3D-rendered graphic of the word "EPCOS" in a light gray, sans-serif font. The letters are tilted and appear to be floating or emerging from a dark, textured background that resembles a globe or a complex circuit board. The overall effect is a sense of depth and modernity.



<b>SAW Components</b>	<b>B4050</b>
<b>Low Loss Filter</b>	<b>1575.42 MHz</b>

Data Sheet



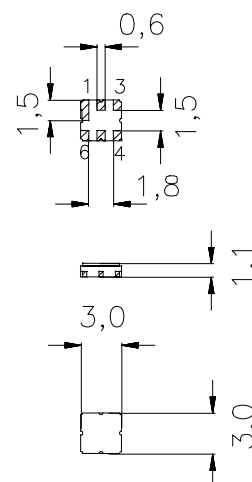
Ceramic package **DCC6D**

#### Features

- Low loss RF filter for GPS receivers
- Usable passband 2,4 MHz
- Low insertion attenuation, low amplitude ripple
- Unbalanced to balanced operation
- Ceramic package for **Surface Mounted Technology (SMT)**

#### Terminals

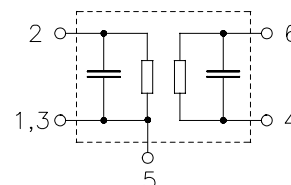
- Ni, gold-plated



Dimensions in mm, approx. weight 0,037 g

#### Pin configuration

2	Input, unbalanced
4, 6	Output, balanced
1, 3, 5	To be grounded
1, 3, 5	Case ground



Type	Ordering code	Marking and Package according to	Packing according to
B4050	B39162-B4050-U510	C61157-A7-A68	F61074-V8089-Z000

Electrostatic Sensitive Device (ESD)

#### Maximum ratings

Operable temperature range	$T$	-40 / +85	°C	
Storage temperature range	$T_{stg}$	-40 / +85	°C	
DC voltage	$V_{DC}$	0	V	
Source power	$P_S$	0	dBm	source impedance 50 $\Omega$



# SAW Components

B4050

## Low Loss Filter

1575.42 MHz

### Data Sheet



### Characteristics

Operating temperature range:  $T = -40\text{ °C to }+85\text{ °C}$   
Terminating source impedance:  $Z_S = 50\ \Omega$   
Terminating load impedance:  $Z_L = 50\ \Omega$  (balanced)

		min.	typ.	max.	
<b>Center frequency</b>	$f_C$	—	1575,42	—	MHz
<b>Maximum insertion attenuation</b>	$\alpha_{\max}$				
	1574,22 ... 1576,62 MHz	—	3,3	3,8	dB
<b>Amplitude ripple (p-p)</b>	$\Delta\alpha$				
	1574,22 ... 1576,62 MHz	—	0,3	1,0	dB
<b>Attenuation</b>	$\alpha$				
	0,00 ... 1250,00 MHz	50,0	60,0	—	dB
	1425,00 ... 1525,00 MHz	37,0	50,0	—	dB
	1525,00 ... 1535,42 MHz	30,0	44,0	—	dB
	1615,42 ... 1625,00 MHz	20,0	44,0	—	dB
	1625,00 ... 1675,00 MHz	37,0	46,0	—	dB
	1675,00 ... 1850,00 MHz	40,0	60,0	—	dB
	1850,00 ... 1910,00 MHz	50,0	60,0	—	dB
	1910,00 ... 2500,00 MHz	40,0	55,0	—	dB
	2500,00 ... 4000,00 MHz	20,0	52,0	—	dB



SAW Components

B4050

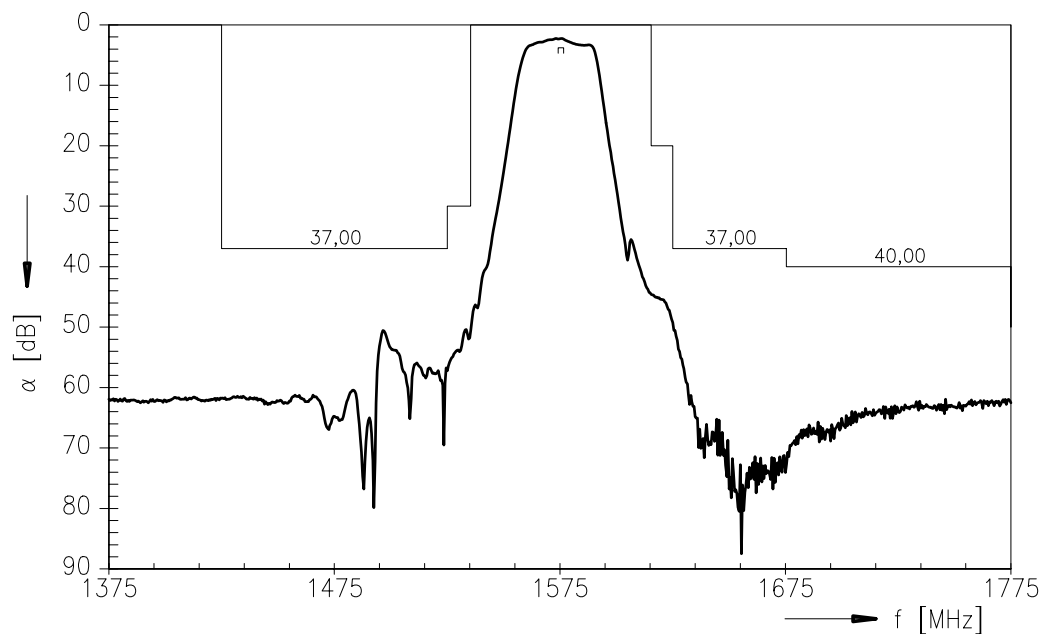
Low Loss Filter

1575.42 MHz

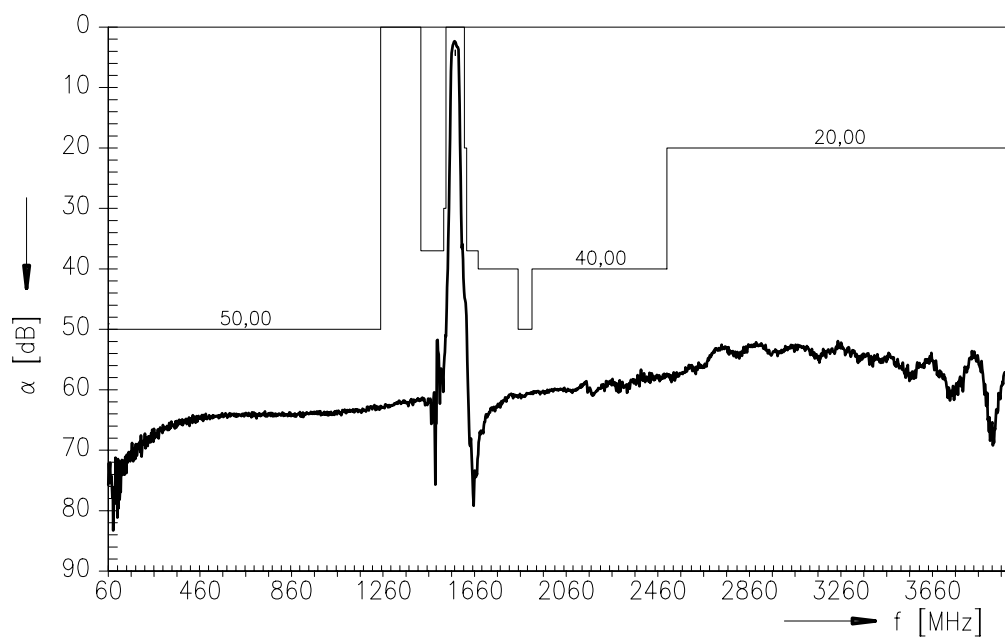
Data Sheet



### Transfer function



### Transfer function (wide band)





<b>SAW Components</b>	<b>B4050</b>
<b>Low Loss Filter</b>	<b>1575.42 MHz</b>
<b>Data Sheet</b>	<b>SMD</b>

**Published by EPCOS AG**  
**Surface Acoustic Wave Components Division, OFW E NK**  
**P.O. Box 80 17 09, D-81617 München**

© EPCOS AG 1999. All Rights Reserved.

As far as patents or other rights of third parties are concerned, liability is only assumed for components per se, not for applications, processes and circuits implemented within components or assemblies.

The information describes the type of component and shall not be considered as assured characteristics.

Terms of delivery and rights to change design reserved.

For questions on technology, prices and delivery please contact the sales offices of EPCOS AG or the international representatives.

Due to technical requirements components may contain dangerous substances. For information on the type in question please also contact one of our sales offices.