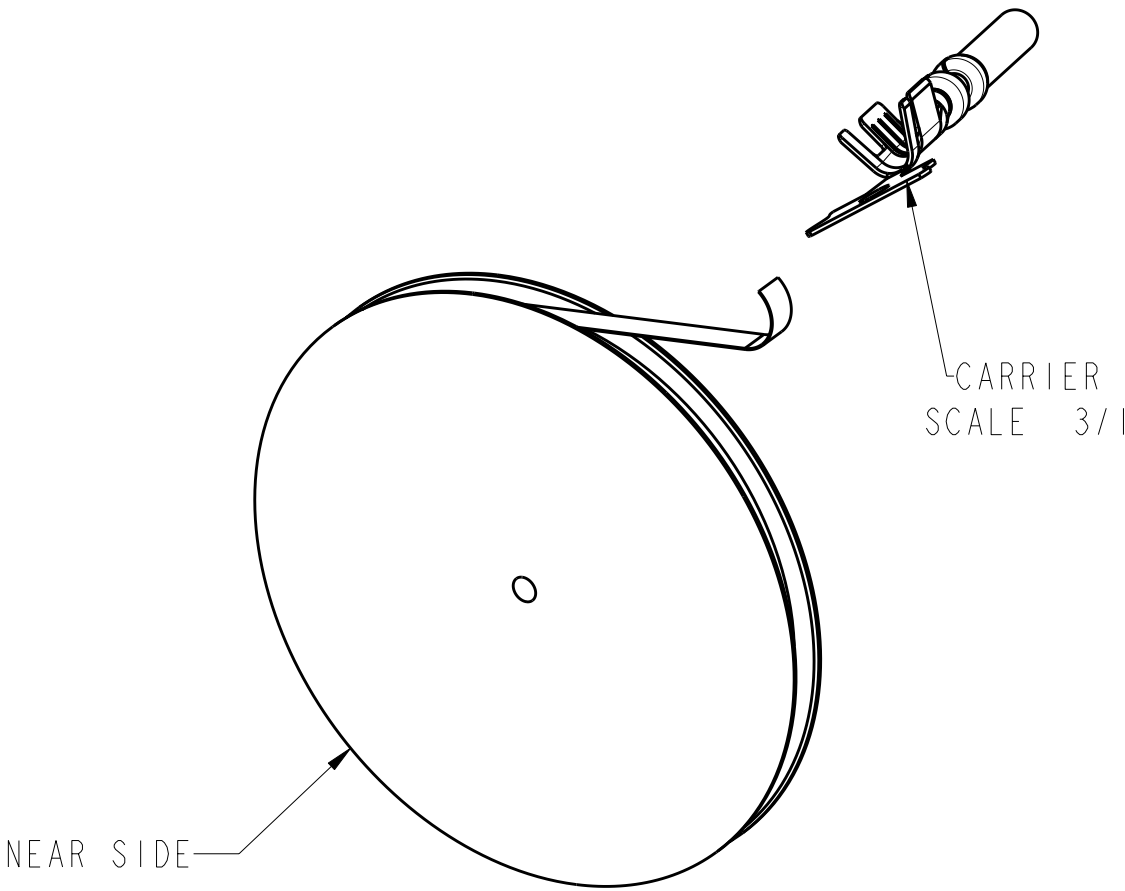
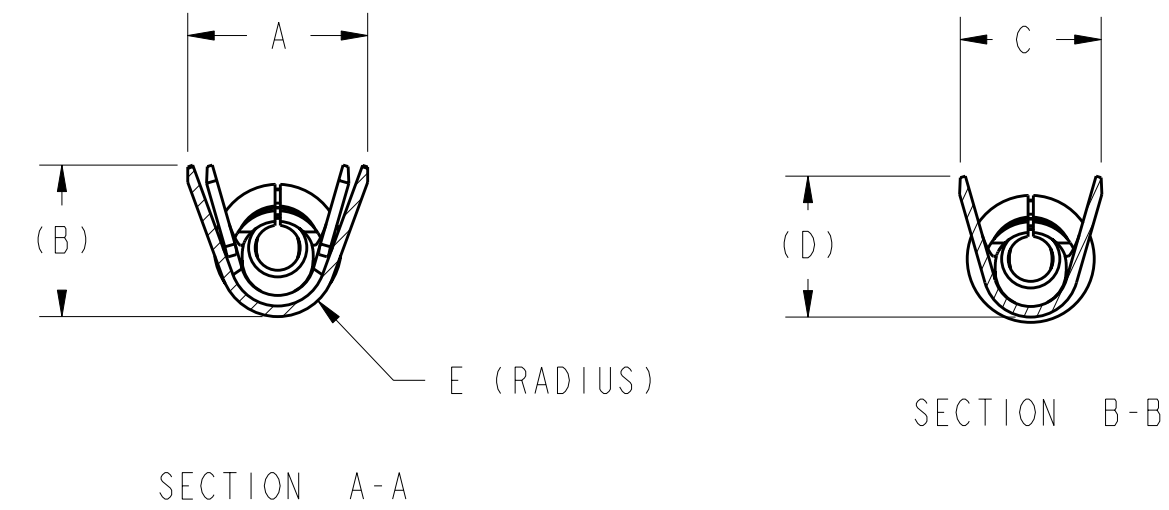


D

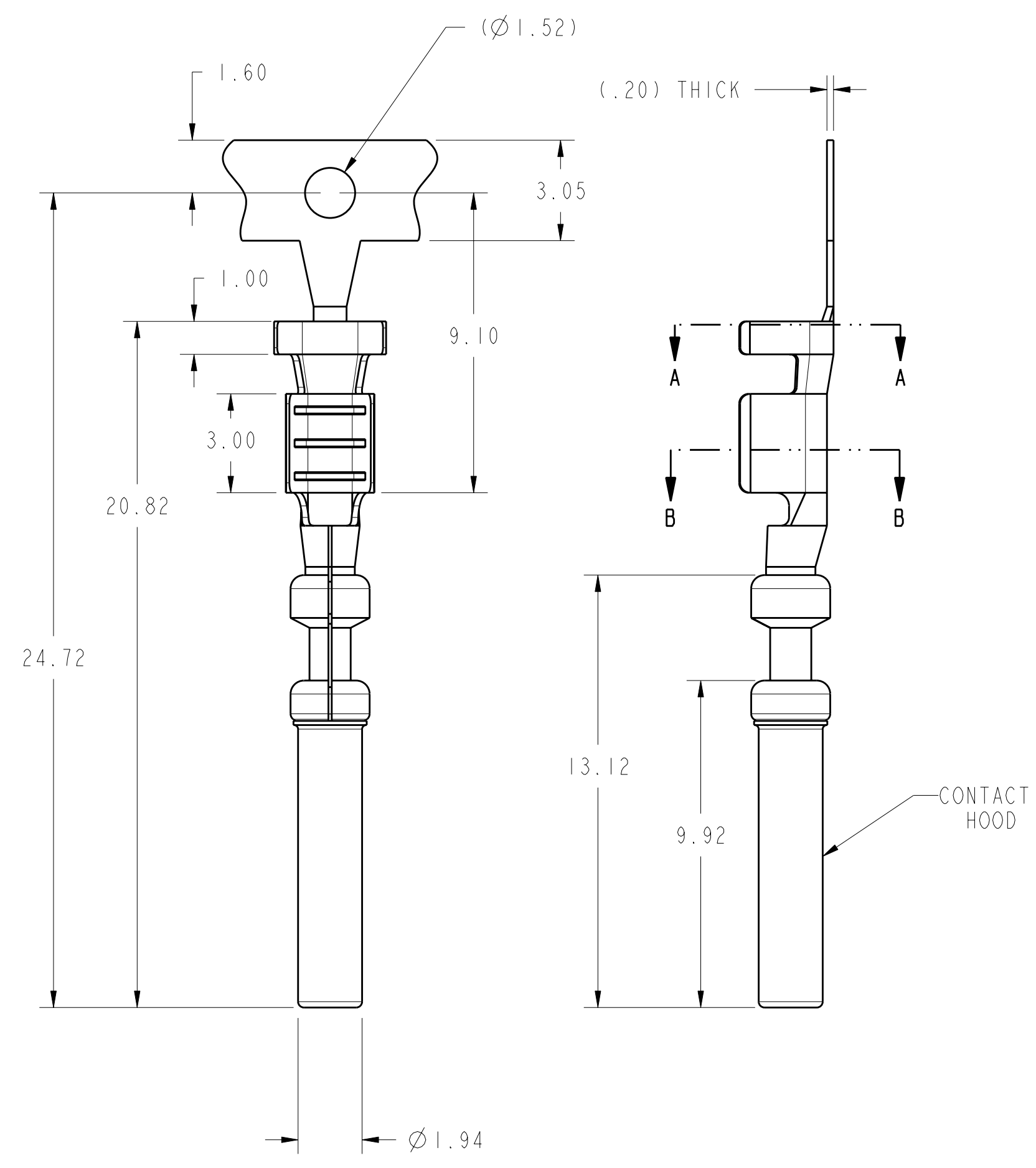
C

B

A



PARTS ARE REELED WITH SADDLES POINTING OUT AND THE CARRIER ON THE NEAR SIDE. CONTACTS ARE TO HAVE A SULFUR FREE PAPER BETWEEN COILS. THERE ARE 7000 TERMINALS PER REEL. THE TERMINALS ARE ON A 8.0 MM SPACING.



- NOTE(S):
1. BASE MATERIALS:
CONTACT - HIGH CONDUCTIVITY COPPER ALLOY.
HOOD - STAINLESS STEEL.
 2. PLATING:
CONTACT - NICKEL UNDERPLATE. TIN PLATING IN CRIMP AREA.
GOLD PLATE IN ELECTRICAL ENGAGEMENT AREA.
HOOD - PASSIVATED OR GOLD PLATED (SEE TABLE).
 3. SEE TABLE FOR RECOMMENDED CRIMP SPECIFICATIONS AND APPLICATION TOOLING.

SUGGESTED CRIMP SPECIFICATIONS AND APPLICATION TOOLING				
AWG WIRE SIZE	20	18	16	14
RECOMMENDED INSULATION DIAMETER RANGE (MIN/MAX)	1.77 / 2.46	1.77 / 2.46	2.18 / 2.92	2.18 / 2.92
RECOMMENDED CONDUCTOR CRIMP HEIGHT	1.00 ±.05	1.09 ±.05	1.18 ±.05	1.45 ±.05
RECOMMENDED CONDUCTOR CRIMP WIDTH	1.77	1.86	1.94	2.20
STRIP LENGTH	4.20 ± 0.25	4.20 ± 0.25	4.20 ± 0.25	4.20 ± 0.25
TE CONNECTIVITY HAND TOOL PART NUMBER	1456088-1	1456088-1	1456088-1 OR 91367-1	91367-1
MINIMUM CRIMP TENSILE STRENGTH (LBS)	19	24	28	35

1.6	3.00	2.78	2.9	4.10	STAINLESS STEEL	16-14	13002630102	1-1437284-0
1.1	2.64	2.47	3.3	3.40	STAINLESS STEEL	20-18	13002630101	0-1437284-9
E	D	C	B	A	HOOD FINISH	AWG	FORMER T&B PART NUMBER	TE CONNECTIVITY PART NUMBER

THIS DRAWING IS A CONTROLLED DOCUMENT.

DIMENSIONS:
mm

MATERIAL

SEE NOTES

TOLERANCES UNLESS OTHERWISE SPECIFIED:

0 PLC ±
1 PLC ±0.1
2 PLC ±.13
3 PLC ±.050
4 PLC ±0.0001
ANGLES ±2
FINISH

DWN J. REMOLL 08-15-01
CHK J. REMOLL 08-15-01
APVD J. REMOLL 08-15-01

PRODUCT SPEC
-
APPLICATION SPEC
-
WEIGHT
-

CUSTOMER DRAWING

TE Connectivity

NAME
AUTOMOTIVE SOCKET CONTACT
20 - 14 AWG WIRE
(1mm SYSTEM)

SIZE
A2

CAGE CODE
00779

DRAWING NO
C-1456216

RESTRICTED TO
-

SCALE
7/1

SHEET
1

OF
1

REV
C1

Mouser Electronics

Authorized Distributor

Click to View Pricing, Inventory, Delivery & Lifecycle Information:

[TE Connectivity:](#)

[1437284-9 \(Mouser Reel\)](#) [1437284-9 \(Cut Strip\)](#)