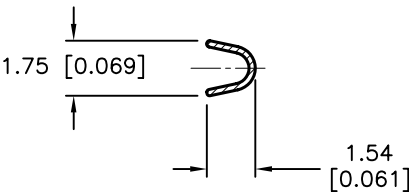
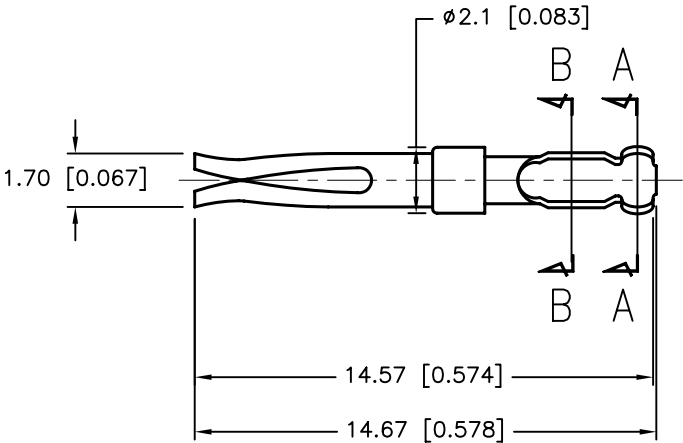
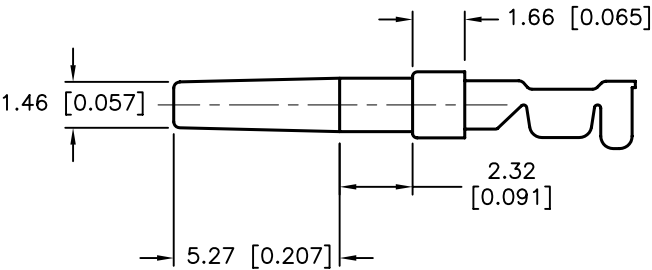
	ALL RIGHTS RESERVED. NO PORTION OF THIS PUBLICATION, WHETHER IN WHOLE OR IN PART CAN BE REPRODUCED WITHOUT THE EXPRESS WRITTEN CONSENT OF SPC TECHNOLOGY. SPC-F005.DWG			REVISIONS				DOC. NO. SPC-F005 * Effective: 7/8/02 * DCP No: 1398					
				DCP #	REV	DESCRIPTION	DRAWN	DATE	CHECKD	DATE	APPRVD	DATE	
				1876	A	RELEASED	EO	07/25/06	SA	07/25/06	HO	07/25/06	

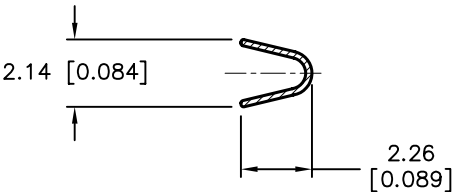

 RoHS
Compliant

SPECIFICATIONS:

1. Contact: Brass, Stamped 5u” Gold–Plated on contact area, gold flash on crimp area.



SECTION B-B



SECTION A-A

DISCLAIMER: ALL STATEMENTS AND TECHNICAL INFORMATION CONTAINED HEREIN ARE BASED UPON INFORMATION AND/OR TESTS WE BELIEVE TO BE ACCURATE AND RELIABLE. SINCE CONDITIONS OF USE ARE BEYOND OUR CONTROL, THE USER SHALL DETERMINE THE SUITABILITY OF THE PRODUCT FOR THE INTENDED USE AND ASSUME ALL RISK AND LIABILITY WHATSOEVER IN CONNECTION THEREWITH.	TOLERANCES: Unless Otherwise Specified .X ±0.35 [0.014] .XX ±0.2 [0.008]	DRAWN BY:	DATE:	DRAWING TITLE: D–Sub Crimp Style Female Contacts			
		EKLAS ODISH	07/25/06				
		CHECKED BY:	DATE:	SIZE	DWG. NO.	ELECTRONIC FILE	REV
		SAMI ALNADI	07/25/06	A	SPC15421	79K5002.DWG	A
		APPROVED BY:	DATE:	SCALE: NTS		U.O.M.: mm [INCHES]	SHEET: 1 OF 1

DRAWN BY:	DATE:
EKLAS ODISH	07/25/06
CHECKED BY:	DATE:
SAMI ALNADI	07/25/06
APPROVED BY:	DATE:
HISHAM ODISH	07/25/06

DRAWING TITLE:			
D–Sub Crimp Style Female Contacts			
SIZE	DWG. NO.	ELECTRONIC FILE	REV
A	SPC15421	79K5002.DWG	A
SCALE: NTS		U.O.M.: mm [INCHES]	SHEET: 1 OF 1