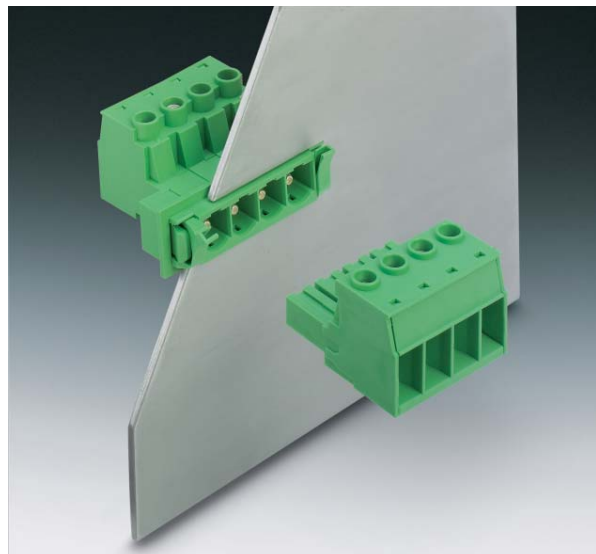


POWER COMBICON feed-through plugs

10.16 mm pitch

DFK-PC 16/...-ST(F)-10,16

If a 16 mm² conductor is used, the new feed-through plug connector offers the possibility to transfer a current of 76 A from inside the device to outside and vice-versa. Just insert DFK-PC 16 into the opening in the housing and fix it in place using the easy-to-use snap-lock mechanism, without the need for additional tools. This version is designed in such a way that there is a screw connection on the device inside to guide cables from outside the device to the inside (or vice-versa). In combination with the standard PC 16 plugs, a cable-cable feed-through fit in the device housing can be realized for 2 to 9 positions. In the STF versions, the shielding function can be guided onto or through the housing wall. The fastening flanges offer vibration-proof connection. The feed-through plug connector is designed for 1.0 to 3.0 mm panel thickness.



Note:

In compliance with DIN EN 61984, COMBICON plug connectors come without switching capacity. During designated use, they must not be plugged in or disconnected when carrying voltage or under load.



Fast snap-lock mechanism



Screw fastening

COMBICON Select

The COMBICON search engine with CAD downloading



COMBICON Select – the printed circuit board connection software supports your workflow from the PCB and housing layout to the ordering process with:

- Systematic and fast selection of products
- Universal Internet aided engineering with extensive CAD downloading
- Easy-to-use e-shopping functions.

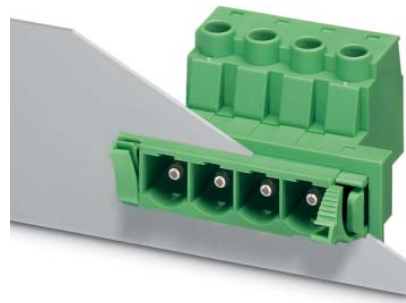
select.phoenixcontact.com/combicon

POWER COMBICON

Feed-through plugs

DFK-PC 16/...-ST-10,16

10.16 mm Pitch

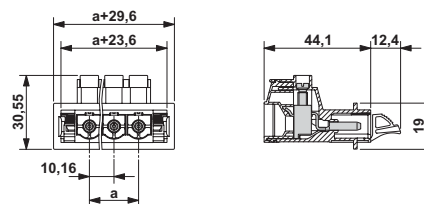


Description	No. of pos.	Dim. a [mm]
POWER COMBICON plugs, 10.16 mm pitch, color: green	2	10.16
	3	20.32
	4	30.48
	5	40.64
	6	50.80
	7	60.96
	8	71.12
	9	81.28
Keying profile , is inserted into the slot on the plug and header, red insulating material		
Screws , (DIN ISO 7049 screw ST 2,9 x 9,5), for fixing feed-through terminal blocks on the housing wall		
Screwdriver , to actuate the terminal screws		
Marker card , with 10 pcs., 10-section marker strips, white, self-adhesive, for 100 terminal blocks		
Crimp pliers , for ferrules of up to 16 mm ²		
Technical data		
Dimensions		
Pitch		[mm]
Technical data in accordance with IEC/ DIN VDE		
Insulating material group		–
Surge voltage category / contamination class		– / –
Rated voltage		[V]
Rated surge voltage		[kV]
Nominal current / cross section		[A] / [mm ²]
Maximum load current / cross section		[A] / [mm ²]
Connection capacity		
Solid / stranded / conductor sizes		[mm ²] / [mm ²] / AWG
Stranded with ferrule without / with plastic sleeve		[mm ²]
Multiple connection (2 conductors with same cross section)		
Solid / stranded		[mm ²]
Stranded with ferrules without plastic sleeve		[mm ²]
Stranded with TWIN ferrule with plastic sleeve		[mm ²]
Stripping length		[mm]
Internal cylindrical gage (IEC 60947-1)		–
Screw thread		–
Tightening torque		[Nm]
Insulation material		
Inflammability class acc. to UL 94		
Approval data (UL/CUL and CSA)		
Usegroup B		[V] / [A] / AWG
Usegroup C		[V] / [A] / AWG
Usegroup D		[V] / [A] / AWG

Type	Order No.	Pcs./Pkt.																		
DFK-PC 16/ 2-ST-10,16	1703373	50																		
DFK-PC 16/ 3-ST-10,16	1703386	50																		
DFK-PC 16/ 4-ST-10,16	1703399	50																		
DFK-PC 16/ 5-ST-10,16	1703409	50																		
DFK-PC 16/ 6-ST-10,16	1703412	50																		
DFK-PC 16/ 7-ST-10,16	1703425	50																		
DFK-PC 16/ 8-ST-10,16	1703438	50																		
DFK-PC 16/ 9-ST-10,16	1703441	50																		
CP-HCC 4	1600027	50																		
DFK-PC 16-SS	1705449	20																		
SZS 1,0 x 4,0	1205066	10																		
SK 10/5 (see COMBICON catalog)																				
CRIMPFOX 16 S	1207983	1																		
see description																				
10.16																				
<table> <tr> <td></td><td>I</td><td></td></tr> <tr> <td>III / 3</td><td>III / 2</td><td>II / 2</td></tr> <tr> <td>1000</td><td>1000</td><td>1000</td></tr> <tr> <td>8</td><td>8</td><td>6</td></tr> <tr> <td></td><td>57 ¹⁾ / 10</td><td></td></tr> <tr> <td></td><td>76 ¹⁾ / 16</td><td></td></tr> </table>				I		III / 3	III / 2	II / 2	1000	1000	1000	8	8	6		57 ¹⁾ / 10			76 ¹⁾ / 16	
	I																			
III / 3	III / 2	II / 2																		
1000	1000	1000																		
8	8	6																		
	57 ¹⁾ / 10																			
	76 ¹⁾ / 16																			
0.75 - 16 / 0.75 - 16 / 18 - 6																				
0,5 - 16 ²⁾ / 0,5 - 16 ²⁾																				
0.75 - 6 / 0.75 - 6																				
0.5 - 4																				
0.5 - 6																				
14																				
A6																				
M4																				
1.5 - 1.7																				
PA																				
V0																				
600 / 55 / 20 - 6																				
600 / 55 / 20 - 6																				
on request																				

¹⁾ Observe derating curve

²⁾ Only in connection with CRIMPFOX 16 S

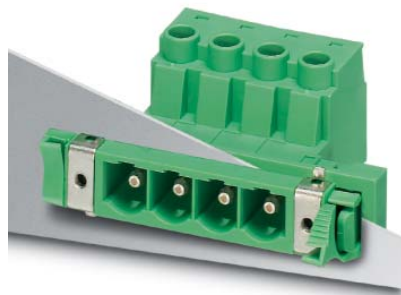


POWER COMBICON

Feed-through plugs

DFK-PC 16/...-STF-10,16

10.16 mm Pitch



Description	No. of pos.	Dim. a [mm]
POWER COMBICON feed-through plugs, 10.16 mm pitch, color: green, with screw flange	2	10.16
	3	20.32
	4	30.48
	5	40.64
	6	50.80
	7	60.96
	8	71.12
	9	81.28

Keying profile, is inserted into the slot on the plug and header, red insulating material

Screws, (DIN ISO 7049 screw ST 2,9 x 9,5), for fixing feed-through terminal blocks on the housing wall

Screwdriver, to actuate the terminal screws

Marker card, with 10 pcs., 10-section marker strips, white, self-adhesive, for 100 terminal blocks

Crimp pliers, for ferrules of up to 16 mm²

Technical data

Dimensions	
Pitch	[mm]

Technical data in accordance with IEC/ DIN VDE

Insulating material group	–
Surge voltage category / contamination class	– / –
Rated voltage	[V]
Rated surge voltage	[kV]
Nominal current / cross section	[A] / [mm ²]
Maximum load current / cross section	[A] / [mm ²]

Connection capacity

Solid / stranded / conductor sizes	[mm ²] / [mm ²] / AWG
Stranded with ferrule without / with plastic sleeve	[mm ²]

Multiple connection (2 conductors with same cross section)

Solid / stranded	[mm ²]
Stranded with ferrules without plastic sleeve	[mm ²]
Stranded with TWIN ferrule with plastic sleeve	[mm ²]

Stripping length

Internal cylindrical gage (IEC 60947-1)

Screw thread

Tightening torque [Nm]

Insulation material

Inflammability class acc. to UL 94

Approval data (UL/CUL and CSA)

Usegroup B	[V] / [A] / AWG
Usegroup C	[V] / [A] / AWG
Usegroup D	[V] / [A] / AWG

Type	Order No.	Pcs./Pkt.
DFK-PC 16/ 2-STF-10,16	1703454	50
DFK-PC 16/ 3-STF-10,16	1703467	50
DFK-PC 16/ 4-STF-10,16	1703470	50
DFK-PC 16/ 5-STF-10,16	1703483	50
DFK-PC 16/ 6-STF-10,16	1703496	50
DFK-PC 16/ 7-STF-10,16	1703506	50
DFK-PC 16/ 8-STF-10,16	1703519	50
DFK-PC 16/ 9-STF-10,16	1703522	50
CP-HCC 4	1600027	50
DFK-PC 16-SS	1705449	20
SZS 1,0 x 4,0	1205066	10
SK 10/5 (see COMBICON catalog)		
CRIMPFOX 16 S	1207983	1

see description
10.16

III / 3	III / 2	II / 2
1000	1000	1000
8	8	6
	57 ¹⁾ / 10	
	76 ¹⁾ / 16	
0.75 - 16 / 0.75 - 16 / 18 - 6		
0,5 - 16 ²⁾ / 0,5 - 16 ²⁾		
0.75 - 6 / 0.75 - 6		
0.5 - 4		
0.5 - 6		
14		
A6		
M4		
1.5 - 1.7		
PA		
V0		

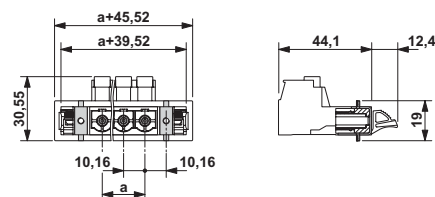
600 / 55 / 20 - 6

600 / 55 / 20 - 6

on request

¹⁾ Observe derating curve

²⁾ Only in connection with CRIMPFOX 16 S

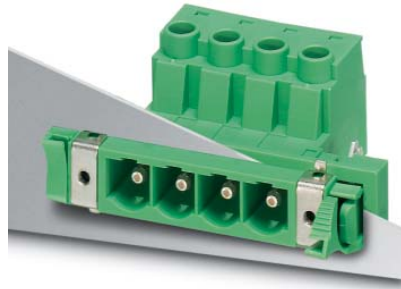


POWER COMBICON

Feed-through plugs

DFK-PC 16/...-STF-SH-10,16

10.16 mm Pitch

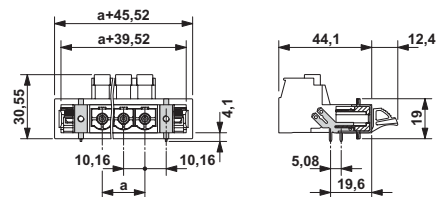
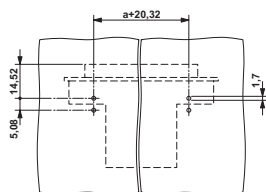


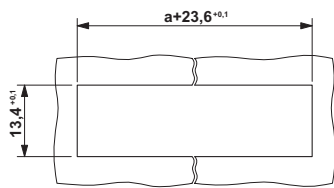
Description	No. of pos.	Dim. a [mm]
POWER COMBICON feed-through plugs, 10.16 mm pitch, color: green, shielded version, with screw flange	2	10.16
	3	20.32
	4	30.48
	5	40.64
	6	50.80
	7	60.96
	8	71.12
	9	81.28
Keying profile, is inserted into the slot on the plug and header, red insulating material		
Screws, (DIN ISO 7049 screw ST 2,9 x 9,5), for fixing feed-through terminal blocks on the housing wall		
Screwdriver, to actuate the terminal screws		
Marker card, with 10 pcs., 10-section marker strips, white, self-adhesive, for 100 terminal blocks		
Crimp pliers, for ferrules of up to 16 mm ²		
Technical data		
Dimensions		
Pitch		[mm]
Technical data in accordance with IEC/ DIN VDE		
Insulating material group		–
Surge voltage category / contamination class		– / –
Rated voltage		[V]
Rated surge voltage		[kV]
Nominal current / cross section		[A] / [mm ²]
Maximum load current / cross section		[A] / [mm ²]
Connection capacity		
Solid / stranded / conductor sizes		[mm ²] / [mm ²] / AWG
Stranded with ferrule without / with plastic sleeve		[mm ²]
Multiple connection (2 conductors with same cross section)		
Solid / stranded		[mm ²]
Stranded with ferrules without plastic sleeve		[mm ²]
Stranded with TWIN ferrule with plastic sleeve		[mm ²]
Stripping length		[mm]
Internal cylindrical gage (IEC 60947-1)		–
Screw thread		–
Tightening torque		[Nm]
Insulation material		
Inflammability class acc. to UL 94		
Approval data (UL/CUL and CSA)		
Usegroup B		[V] / [A] / AWG
Usegroup C		[V] / [A] / AWG
Usegroup D		[V] / [A] / AWG

Type	Order No.	Pcs./Pkt.																		
DFK-PC 16/ 2-STF-SH-10,16	1703616	50																		
DFK-PC 16/ 3-STF-SH-10,16	1703629	50																		
DFK-PC 16/ 4-STF-SH-10,16	1703632	50																		
DFK-PC 16/ 5-STF-SH-10,16	1703645	50																		
DFK-PC 16/ 6-STF-SH-10,16	1703658	50																		
DFK-PC 16/ 7-STF-SH-10,16	1703661	50																		
DFK-PC 16/ 8-STF-SH-10,16	1703674	50																		
DFK-PC 16/ 9-STF-SH-10,16	1703687	50																		
CP-HCC 4	1600027	50																		
DFK-PC 16-SS	1705449	20																		
SZS 1,0 x 4,0	1205066	10																		
SK 10/5 (see COMBICON catalog)																				
CRIMPFOX 16 S	1207983	1																		
see description																				
10.16																				
<table> <tr> <td></td><td>I</td><td></td></tr> <tr> <td>III / 3</td><td>III / 2</td><td>II / 2</td></tr> <tr> <td>1000</td><td>1000</td><td>1000</td></tr> <tr> <td>8</td><td>8</td><td>6</td></tr> <tr> <td></td><td>57 ¹⁾ / 10</td><td></td></tr> <tr> <td></td><td>76 ¹⁾ / 16</td><td></td></tr> </table>				I		III / 3	III / 2	II / 2	1000	1000	1000	8	8	6		57 ¹⁾ / 10			76 ¹⁾ / 16	
	I																			
III / 3	III / 2	II / 2																		
1000	1000	1000																		
8	8	6																		
	57 ¹⁾ / 10																			
	76 ¹⁾ / 16																			
0.75 - 16 / 0.75 - 16 / 18 - 6																				
0,5 - 16 ²⁾ / 0,5 - 16 ²⁾																				
0.75 - 6 / 0.75 - 6																				
0.5 - 4																				
0.5 - 6																				
14																				
A6																				
M4																				
1.5 - 1.7																				
PA																				
V0																				
600 / 55 / 20 - 6																				
600 / 55 / 20 - 6																				
on request																				

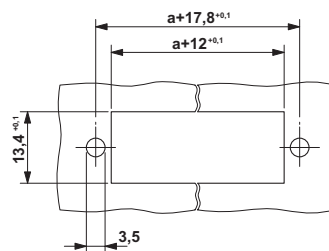
¹⁾ Observe derating curve

²⁾ Only in connection with CRIMPFOX 16 S

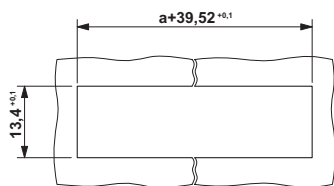




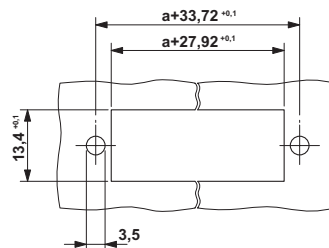
Sheet metal cutout for snap-lock mechanism
for "ST" versions



Sheet metal cutout for screw connection
for "ST" versions



Sheet metal cutout for snap-lock mechanism
for "STF" versions



Sheet metal cutout for screw connection
for "STF" versions

Derating curve

Type: PC 16/...-ST-10,16 with DFK-PC 16/...-ST-10,16

Connected conductor cross section = 16 mm²

Reduction factor = 0.8

Number of positions = see diagram

