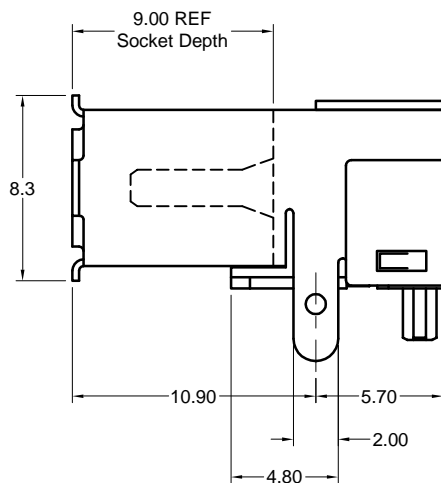
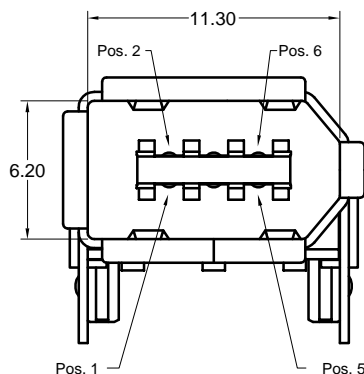


Recommended PCB Layout
Component Side



Part Number	*Insulator Color
KFWXS-SMTBS-100B-30	Black
KFWXS-SMTBS-100W-30	White

Materials and Finish

Shell: Phosphor Bronze,
Nickel Plating

Insulator: UL94V-0 Rated
High Temp. Thermoplastic
Color*- White or Black

Contacts: Phosphor Bronze
Plating- 0.76um (30u")
Gold on Contact Area,
3.8um (150u") Tin
on Solder Tail, all over
1.27um (50u") Nickel

Mechanical Specifications

Durability: 1500 cycles minimum

Mating Force:
35 Newtons maximum

Withdrawal Force:
10 Newtons minimum

Electrical Specifications

Voltage Rating:
30VAC (rms)

Current Rating:
1A max. per contact not
to exceed 30°C Temp. rise

Dielectric Withstanding Voltage:
750VAC @ sea level

Capacitance:
2pF maximum

Contact Resistance:
less than 30 milliohms
per contact pair after
1500 mating cycles.

Insulation Resistance:
Greater than 100 Megohms

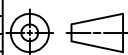
Operating Temperature:
-55°C to + 85°C

RoHS COMPLIANT
EU Directive 2002/95/EC



Tolerances
X.X ± 0.25
X.XX ± 0.15
Unless Stated Otherwise

REV.	DATE	DESCRIPTION	REV. BY	CHK. BY	DRAWN BY	DATE
A1	6/27/05	New Drawing	N.Chang	C. Furumasa	N.Chang	6/27/05



KFWXS-SMTBS-100x-30

Firewire IEEE1394 Receptacle, Right Angle,

SMT Type, with Back Shield, RoHS Compliant



Mouser Electronics

Authorized Distributor

Click to View Pricing, Inventory, Delivery & Lifecycle Information:

[Kycon:](#)

[KFWSX-SMTBS-100W30](#) [KFWSX-SMTBS-100B30](#)