

6000 series

Toggle switches for military applications

Distinctive features and specifications

A

- ☐ Suitable for military applications (portable measuring equipment generators, beacons, fixed and mobile radiotransmitters)
- ☐ Sealing and locking lever options available
- ☐ Matt black finish on actuator and bushing

ELECTRICAL SPECIFICATIONS

- Max. current/voltage rating : see table below
- Initial contact resistance : 10 mΩ max. at 1A 2VDC
- Insulation resistance : 1.000 MΩ min. at 500VDC
- Dielectric strength :
 - 2.000 Vrms 50 Hz min. between terminals
 - 3.000 Vrms 50 Hz min. between terminals and frame
- Electrical life : 10.000 cycles at full load

CURRENT/VOLTAGE RATING				
	30VDC	250VAC	125VAC	115V 400Hz
Resistive load	6,5A	5A	10A	7A
Inductive load	5A	3A	6A	5A
Lamp load	3A	1A	3A	3,5A

MATERIALS

- Case : diallylphthalate (DAP)
- Actuator : brass, chrome plated, black
- Bushing : brass, chrome plated, black
- Contacts :
 - A : silver

GENERAL SPECIFICATIONS

- Torque : 1,50 Nm (1.10 Ft.lb) max. applied to nut
- Panel thickness : 5 mm (.196) max.
- Operating temperature : -40°C to +85°C

ABOUT THIS SERIES

Dimensions : first dimensions are in mm while inches are shown as bracketed numbers.

Security caps are available to prevent inadvertent lever operation. They are presented in section I.



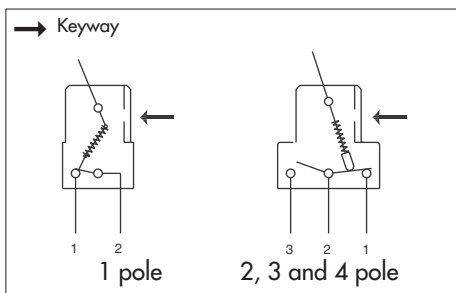
Sealing boots are available to protect the switches against dust and water. They are presented in section H.



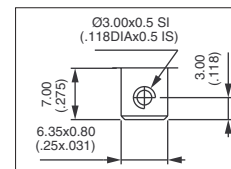
Mounting accessories : standard hardware supplied with all models : 2 matt black nuts U41, matt black locking ring U12, zinc plated lockwasher U13
They are presented in section I.



Packaging unit : 25 pieces, except model 6421 (20 pieces)



- Screw terminals standard
- Solder lug or quick-connect terminals optional
- 1, 2, 3 and 4-pole configurations



MODEL STRUCTURE



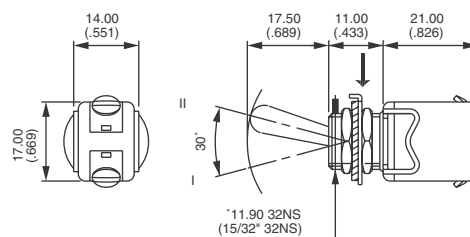
Single pole

→ Keyway



6421A-03

I	II
ON	OFF



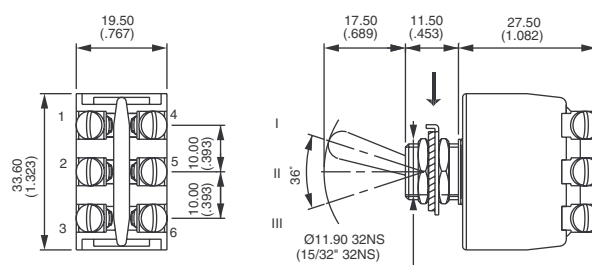
Double pole

→ Keyway



6641-03
6642-03
6643-03
6644-03 ▲
6645-03
6646-03
6647-03
6648-03
6649-03

III	II	I
2-1		2-3
5-4		5-6
ON	-	OFF
ON	-	mom.OFF
MOM	-	OFF
ON	ON	ON
MOM	-	ON
ON	-	ON
MOM	OFF	MOM
ON	OFF	MOM
ON	OFF	ON



▲ Function 4 : SP in DP case, see end of catalogue.

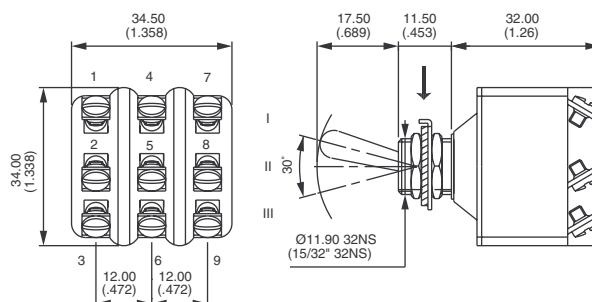
Three pole

→ Keyway



6651-03
6652-03
6653-03
6655-03
6656-03
6657-03
6658-03
6659-03

III*	II	I**
ON	-	OFF
ON	-	mom.OFF
MOM	-	OFF
MOM	-	ON
ON	-	ON
MOM	OFF	MOM
ON	OFF	MOM
ON	OFF	ON



* (2-1) (5-4) (8-7) ** (2-3) (5-6) (8-9)

6000 series

Toggle switches for military applications

OPTIONS

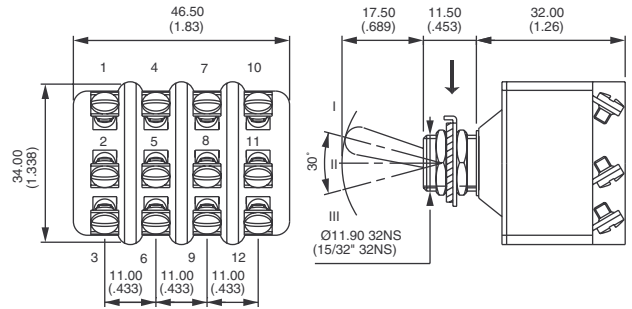


Four pole

→ Keyway



	III*	II	I**
6661-03	ON	-	OFF
6662-03	ON	-	mom.OFF
6663-03	MOM	-	OFF
6664-03 ▲	ON	ON	ON
6665-03	MOM	-	ON
6666-03	ON	-	ON
6667-03	MOM	OFF	MOM
6668-03	ON	OFF	MOM
6669-03	ON	OFF	ON

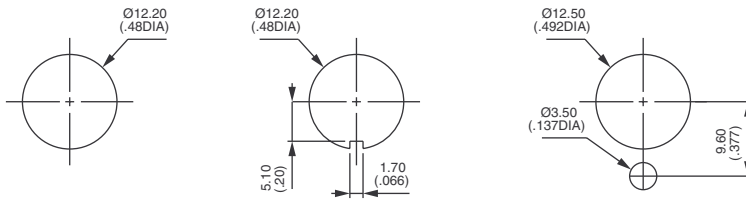


* (2-1) (5-4) (8-7) (11-10)

** (2-3) (5-6) (8-9) (11-12)

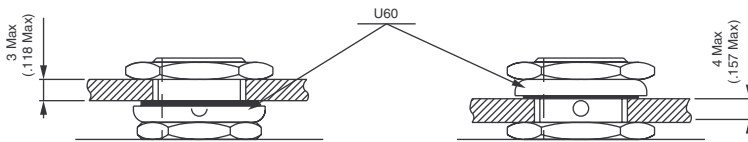
▲ Function 4 : 2P in 4P case, see end of catalogue.

STANDARD PANEL CUT-OUT

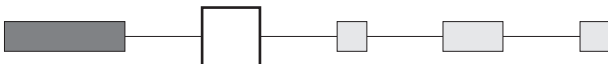


PANEL CUT-OUT WITH "K" SEALING

Recommended cut-out and mounting depending on panel thickness



FINISH



B Lever and bushing with grey satin chrome finish

LM Nickel plated bushing - lever and upper nut bright chrome plated

8 Matt black lever with fluorescent tip



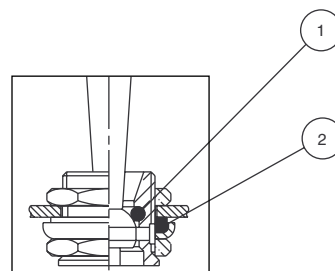
6000 series

Toggle switches for military applications

SEALING



- K** Frontal sealing by O-ring and sealing washer. Protects the switch against water and dust. Panel seal withstands 1 bar pressure and remains sealed even when switch is operated

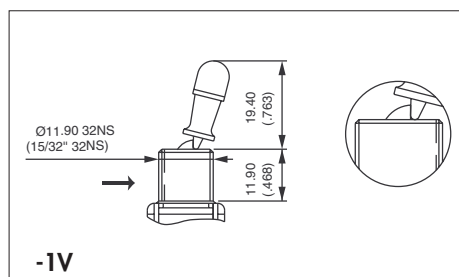


① O-ring ② Sealing washer

LOCKING LEVERS

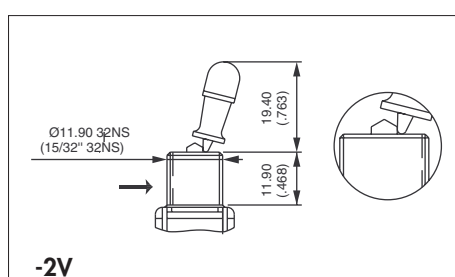


→ Keyway



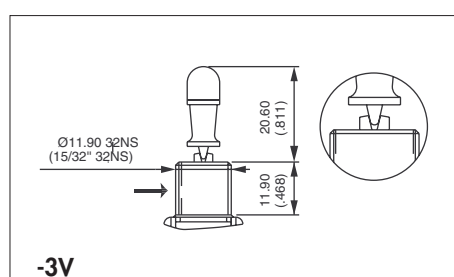
-1V

1 locked position



-2V

2 locked positions



-3V

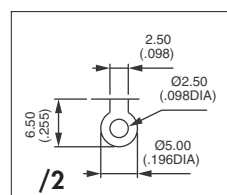
3 locked positions

TERMINALS

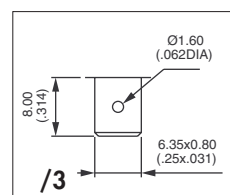


Not available on single pole models.

- Blank** Screw terminals
- /2** Solder lug terminals
- /3** Quick-connect terminals 6,35 x 0,8 (.250 x .031)



/2



/3

NEOPRENE PROTECTION CAPS

These caps are designed to insulate terminals against electrical short circuit.



For 1-pole models

U58

For 2-pole models

U120

For 3-pole models

U46

For 4-pole models

U47

To be ordered separately. Example : PROTECTION CAP U58

Mouser Electronics

Authorized Distributor

Click to View Pricing, Inventory, Delivery & Lifecycle Information:

[Apem:](#)

[66442R03X1025](#)