

10600 series

Professional toggle switches - threaded bushing Ø 10 (.393)

Distinctive features and specifications



☐ CECC approved

ELECTRICAL SPECIFICATIONS

- Max. current/voltage rating with resistive load : 3A 24VDC
- Minimum load : 100 μ A 10mV
- Initial contact resistance : 10 m Ω max.
- Insulation resistance : 1.000 M Ω min. at 500VDC
- Dielectric strength :
 - 1.000 Vrms 50 Hz min. between terminals of the same pole
 - 2.000 Vrms 50 Hz min. between terminals and frame
 - 2.000 Vrms 50 Hz min. between terminals of adjacent poles
- Electrical life : 50.000 cycles

MATERIALS

- Case : diallylphthalate (DAP) or high temperature plastic material (UL94-V0)
- Actuator : brass, nickel plated
- Bushing : brass, nickel plated
- Housing : stainless steel
- Contacts :
 - silver
 - silver, gold plated
- Terminal seal : epoxy

HOMOLOGATION



CECC 96201-007

Availability : consult factory for details of approved models.

Marking : to order switches marked CECC, add "CECC" to model number.

GENERAL SPECIFICATIONS

- Torque : 1,50 Nm (1.106 Ft.lb) max. applied to nut
- Max. panel thickness : 4 mm (.157)
- Operating temperature : -40 °C to +85 °C

ABOUT THIS SERIES

Complete part numbers are shown on the following pages.

Dimensions : first dimensions are in mm while inches are shown as bracketed numbers.



Sealing boots are available to protect the switches against dust and water. They are presented in section H.



Mounting accessories : standard hardware supplied with all models : 1 knurled cap nut, 1 hex nut, 1 locking ring and 1 lockwasher. They are presented in section I.

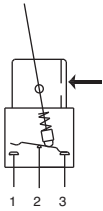


Packaging unit : 25 pieces.

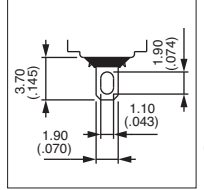
10600 series

Professional toggle switches - threaded bushing Ø 10 (.393)

→ Keyway



- Solder lug terminals
- 2 and 3 positions
- 1 and 2 pole configurations
- Available with matt black finish : consult factory for model number



2 positions - single pole



Silver contacts

106362103

106322103

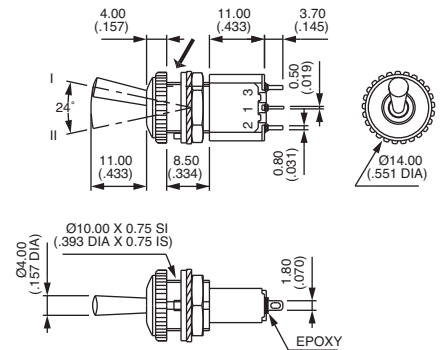
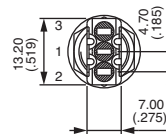
Gold plated silver contacts

106361175

106321175

II	I
1-3	1-2
ON - ON	ON - MOM
ON - MOM	ON - MOM

→ Keyway



2 positions - double pole



Silver contacts

106462103

106422103

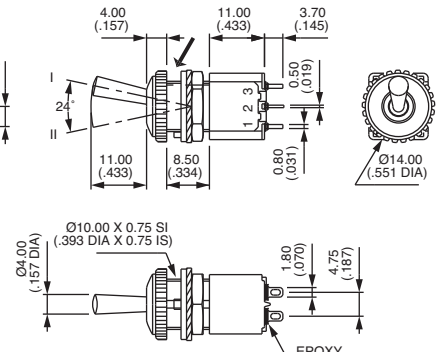
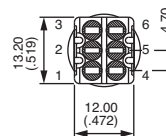
Gold plated silver contacts

106461175

106421175

II	I
2-3	2-1
5-6	5-4
ON - ON	ON - MOM
ON - MOM	ON - MOM

→ Keyway



3 positions - single pole



Silver contacts

106392103

106372103

106382103

Gold plated silver contacts

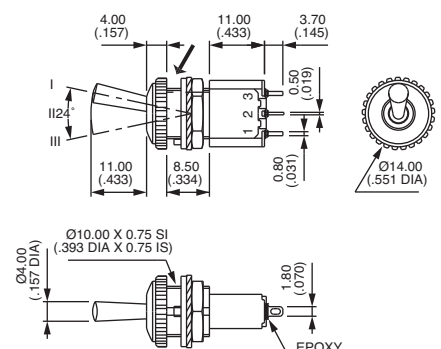
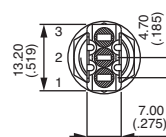
106391175

106371175

106381175

III	II	I
2-3		2-1
ON	OFF	ON
MOM	OFF	MOM
ON	OFF	MOM
ON	OFF	ON
MOM	OFF	MOM
ON	OFF	MOM

→ Keyway



10600 series

Professional toggle switches - threaded bushing Ø 10 (.393)

3 positions - double pole

III	II	I
2-3		2-1
5-6		5-4

→ Keyway



Silver contacts

106492103

106472103

106482103

106440886*

ON	OFF	ON
MOM	OFF	MOM
ON	OFF	MOM
ON	ON	ON
	(2-3)	
	(5-4)	

Gold plated silver contacts

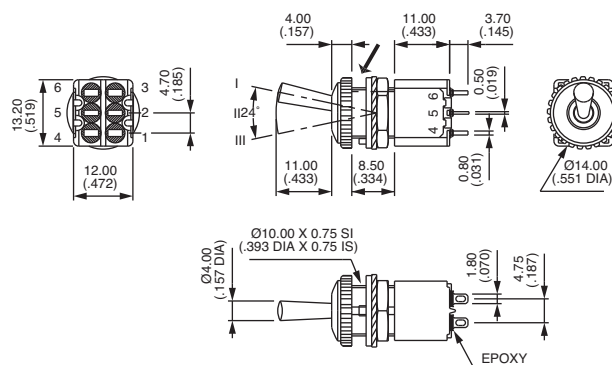
106491175

106471175

106481175

106440944*

ON	OFF	ON
MOM	OFF	MOM
ON	OFF	MOM
ON	ON	ON
	(2-3)	
	(5-4)	



* Function 4 : SP in DP case. Jumper between terminals 2 and 4 to be wired by the user.

PANEL CUT-OUT

