

**MICRO SWITCH**FREEPORT ILLINOIS, U.S.A  
A DIVISION OF HONEYWELL  
FED. MFG. CODE 91929**MAGNET**

CATALOG LISTING

**104MG1**

CATALOG LISTING

**104MG1**

PAGE 1 OF 1

REPLACES

RELEASE NO. 205840

**M**

ISSUE

**2**

CHECK

## REVISIONS

A 206549  
CSL  
1 OCT 02

CHECK

17 JUN 02

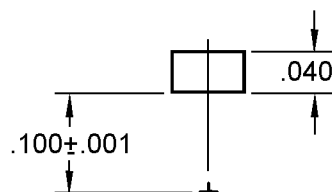
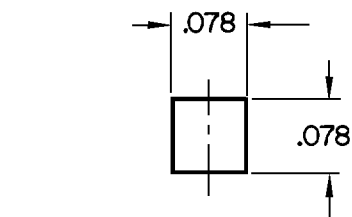
CHECK

17 JUN 02

RASTER

FO-52848-A

DRAWN



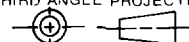
LOCATION OF HALL PROBE

## NOTES

- 1 - THE MAGNET IS RARE EARTH MAGNETIZED AND CONDITIONED FOR OPERATION  
 2 - READING IN GUASS WITH F.W. BELL 620 GUASS METER AND PROBE STJ4-0402  
AT  $.100 \pm .001$  INCHES FROM SOUTH POLE AT TEMPERATURE OF  $25 \pm 1^\circ\text{C}$  SHALL  
BE 100 GAUSS MINIMUM
- 3 - POLES NOT MARKED
- 4 - PACKED 125 PIECES EACH TUBE, TUBES TO BE MARKED WITH RED DOT  
INDICATING NORTH POLE
- 5 - ABSOLUTE MAXIMUM TEMPERATURE RATING  $150^\circ\text{C}$ , MAGNETIC PERFORMANCE  
DEGRADES ABOVE THIS TEMPERATURE

THIS DRAWING COVERS A PROPRIETARY ITEM AND IS THE PROPERTY OF MICRO SWITCH, A DIVISION OF  
HONEYWELL. THIS DRAWING IS NOT TO BE COPIED OR USED WITHOUT THE APPROVAL OF MICRO SWITCH.

THIRD ANGLE PROJECTION

**CHARACTERISTICS****ELECTRICAL DATA**SCALE **5:1**

CONTACT ARRANGEMENT

DO NOT SCALE PRINT

**TOLERANCES**APPLY TO DESIGN UNITS. CONVERSIONS ARE ONLY FOR  
REFERENCE. UNLESS NOTED, TOLERANCES ARE  $\pm$ 

| DIM.         | TOL.    | DIM.      | TOL.              |
|--------------|---------|-----------|-------------------|
| mm           | mm/in   | in        | mm/in             |
| NO PLACES    | X       | 1/.04     |                   |
| ONE PLACE    | X,X     | 0.4/.015  | X,X 0.8/.03       |
| TWO PLACES   | X,X,X   | 0.15/.006 | X,X,X 0.38/.015   |
| THREE PLACES | X,X,X,X |           | X,X,X,X 0.13/.005 |
| ANGLES       |         |           |                   |

SI METRIC

US CUSTOMARY

DESIGN UNITS ☐

WEIGHT

# Mouser Electronics

Authorized Distributor

Click to View Pricing, Inventory, Delivery & Lifecycle Information:

[Honeywell:](#)

[104MG1](#)