

THIS IS ISSUED IN STRICT CONFIDENCE THAT IT IS NOT USED AS A BASIS FOR MANUFACTURE OR SALE AND THAT IT IS NOT COPIED, REPRINTED OR DISCLOSED TO A THIRD PARTY EITHER WHOLLY OR IN PART WITHOUT THE PRIOR WRITTEN CONSENT OF CAL TEST ELECTRONICS, INC.

1. SAFETY JACK, REAR MOUNT, HORIZONTAL PCB.
2. SPECIFICATIONS:  
INSULATOR: RHODIA ENGINEERING, POLYAMIDE 66, A205F, V-2 OR BETTER, UL QMFZ2.  
CONTACT: BRASS, NICKEL PLATED, 80-160 microinches.
3. RATING:  
VOLTAGE: 1,000V CATIII P2 (IEC 61010-1 & -031)  
CURRENT: 25A MAX.  
RESISTANCE: <5mΩ.  
TEMPERATURE: -20° C TO +80° C.
4. MOUNTING: REF. DIAGRAM.
5. MAXIMUM PANEL THICKNESS: .12 (3).
6. - deleted -
7. MODELS ARE RoHS COMPLIANT.

### PART NUMBER

CT3151xx-#

DIM. "A":

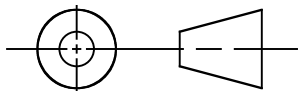
'blank' - .492" (12.5 mm)  
SP - .300" (7.6 mm)

COLOR: 0 - BLACK  
1 - BROWN  
2 - RED  
4 - YELLOW  
5 - GREEN  
6 - BLUE  
7 - PURPLE  
8 - GRAY  
9 - WHITE

### REVISIONS

REV.	DESCRIPTIONS	DATE	APPROVED
-	CLASS A RELEASED	10/13/03	
A	Added Dim. "A" and table.	6/20/06	
B	Note 2., Added Alt. Matl. 2; Note 3., was IEC61010-031; Added notes 6 & 7.	12/20/07	
C	Note 2., Deleted Alt. 1 & 2 (PP); Note 3., was UL61010B-1; Deleted Note 6.	1/25/08	
D	Added Sheet 2 w/line drawing; Note 2., Revised insulator material was A221.	6/27/08	

### THIRD ANGLE PROJECTION



UNLESS OTHERWISE SPECIFIED  
DIMENSIONS ARE IN INCHES  
TOLERANCES ARE:  
FRACTIONS DECIMALS  
± 1/32 .XX ± .02  
.XXX ± .005  
DO NOT SCALE DRAWING

MATERIAL

FINISH

APPLICATION

### CONTRACT NO.

#### APPROVALS

#### DATE

DRAWN WDH

10/13/03

CHECKED

ENGR.

DESIGN ACTIVITY

Cal Test Electronics

22820 Savi Ranch Parkway  
Yorba Linda, CA 92887-4610

#### TITLE

4mm SAFETY JACK,  
HORIZONTAL PCB MOUNT

SIZE  
**A**

CAGE CODE  
**43F45**

DWG. NO.

P315100

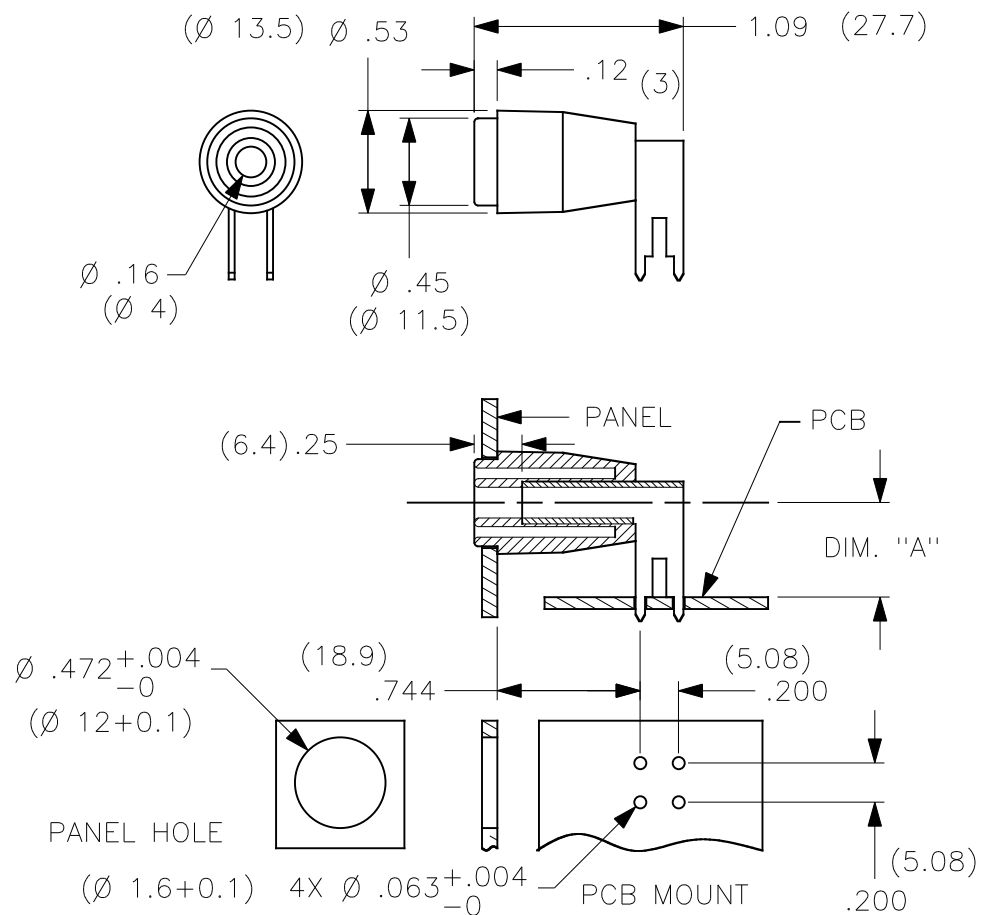
REV.  
D

SCALE 1:1

P315100\_rD.pdf

SHEET 1 OF 2

THIS IS ISSUED IN STRICT CONFIDENCE  
 THAT IT IS NOT USED AS A BASIS FOR  
 MANUFACTURE OR SALE AND THAT IT  
 IS NOT COPIED, REPRINTED OR  
 DISCLOSED TO A THIRD PARTY EITHER  
 WHOLLY OR IN PART WITHOUT THE  
 PRIOR WRITTEN CONSENT OF CAL TEST  
 ELECTRONICS, INC.



		SIZE <b>A</b>	CAGE CODE <b>43F45</b>	DWG. NO. <b>P315100</b>	REV. <b>D</b>
DRAWN WDH	6/27/08				
CHECKED		SCALE 1:1	P315100_rD.pdf	SHEET 2 OF 2	