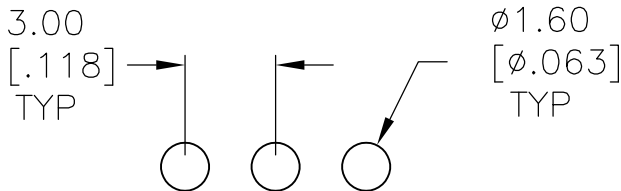
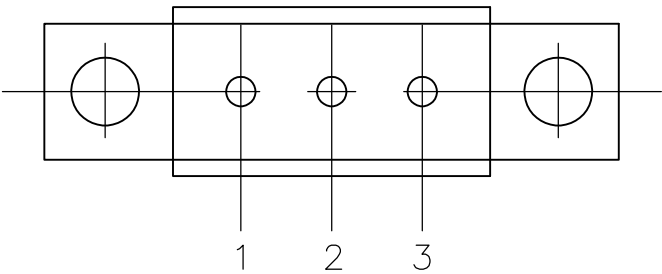
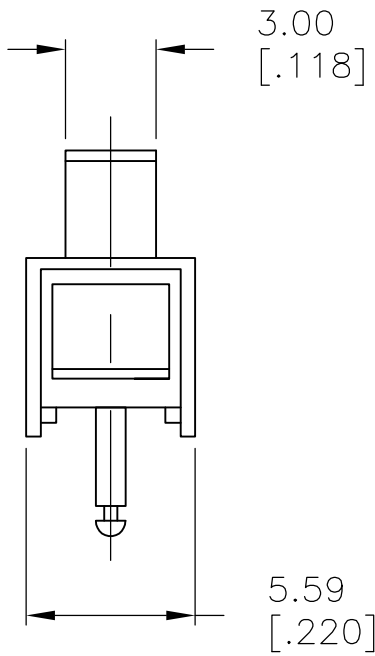
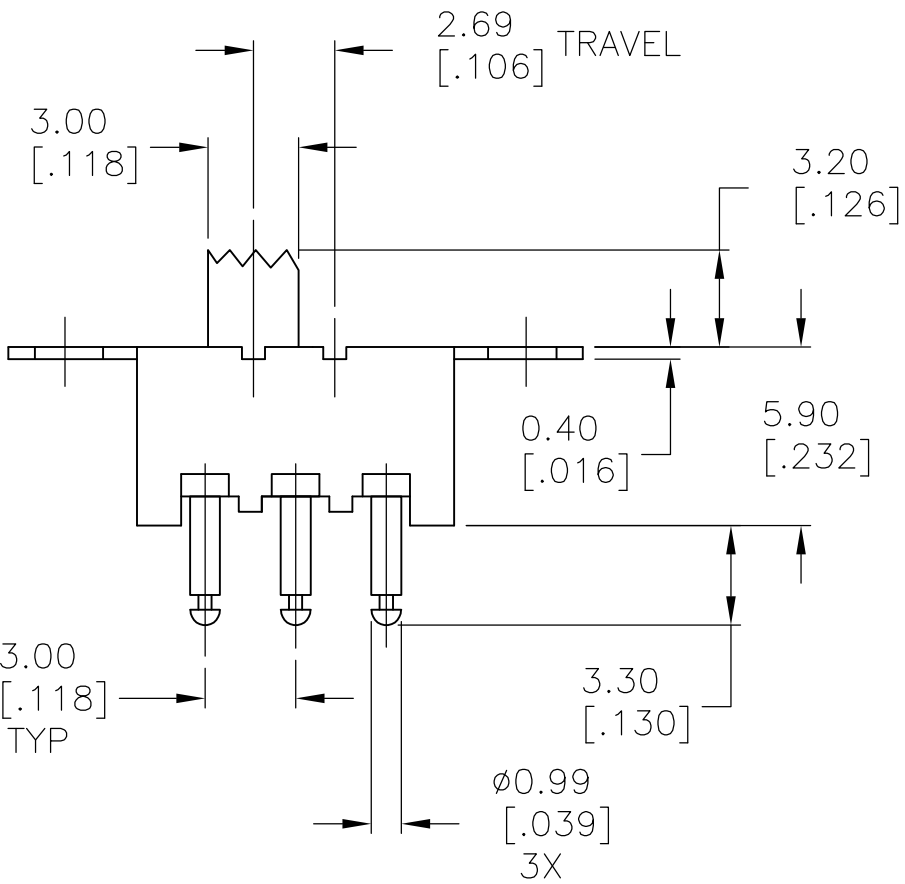
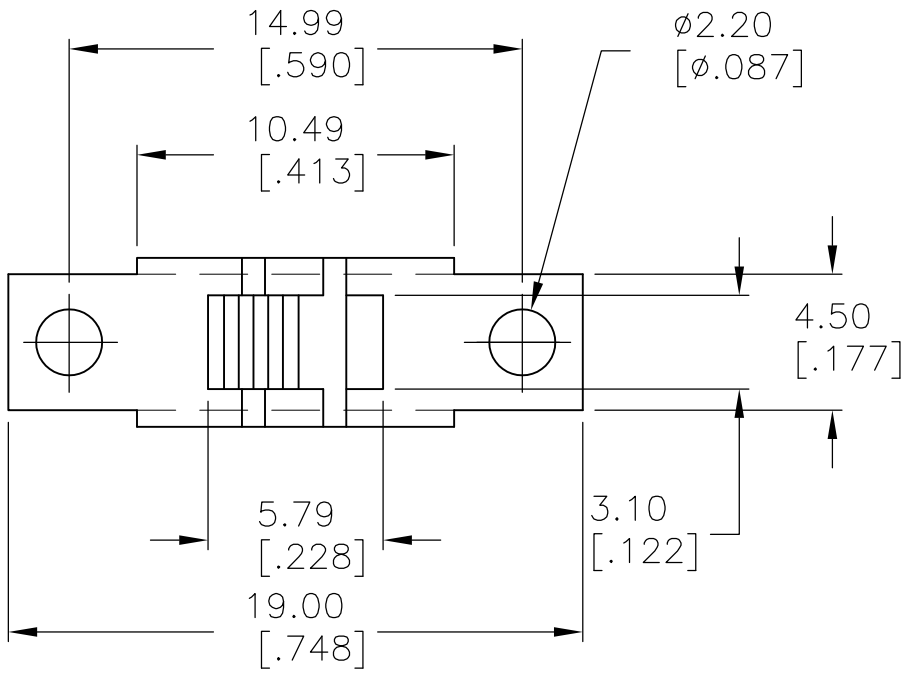


LOC	DIST	REVISIONS					
		P	LTR	DESCRIPTION	DATE	DWN	APVD
AD	OO		B	ECO-07-016003	16OCT07	MB	MS



RECOMMENDED HOLE LAYOUT

SPECIFICATIONS:
BREAK-BEFORE-MAKE

MATERIALS:
FRAME-STEEL, ZINC PLATE
ACTUATOR-PBT G30, BLACK
FIXED CONTACT/TERMINAL-COPPER ALLOY, SILVER OVER NICKEL PLATE
MOVING CONTACT-COPPER ALLOY, SILVER OVER NICKEL PLATE
COIL SPRING-STEEL WIRE
LEAF SPRING-COPPER ALLOY
TERMINAL BOARD-PHENOLIC, UL94HB


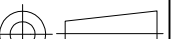
ELECTRICAL:
CONTACT RATING- 500 MILLIAMPS@125V AC
CONTACT RESISTANCE- 30 MILLIOHMS MAX (INITIAL), 60 MILLIOHMS AFTER TEST
INSULATION RESISTANCE- 500 MEGOHMS MIN AT SEA LEVEL
DIELECTRIC STRENGTH- 500 VAC RMS AT SEA LEVEL
LIFE EXPECTANCY- 10,000 CYCLES MIN, NO LOAD & 6,000 MIN AT RATED CURRENT

MECHANICAL:
ACTUATION FORCE- 350±200 GRAMS
TRAVEL- 2.69[.106]

ENVIRONMENTAL:
OPERATING TEMPERATURE- -20°C TO +85°C
STORAGE TEMPERATURE- -40°C TO +100°C
RESISTANCE TO SOLDER HEAT- 260°C FOR 10 SEC PER 109-202, CONDITION B
SOLDERABILITY- PER EIA-364-56A, PROCEDURE 3, CONDITION B

- ALL MATERIALS AND FINISHES SHALL COMPLY WITH EU DIRECTIVE 2002/95/EC OF 27JAN2003 (ROHS)
- ALL PERFORMANCE SPECIFICATIONS WERE TESTED IN ACCORDANCE WITH JIS-C-5441 UNLESS OTHERWISE STATED.

1-2	2-3	SLSA12004	1825081-1
LEFT	RIGHT	ALCO PART NUMBER	PART NUMBER
ACTUATOR POSITION			

THIS DRAWING IS A CONTROLLED DOCUMENT.			DWN BS VISWESWARA CHK MS SARVER APVD — PRODUCT SPEC — APPLICATION SPEC — WEIGHT —		01MAR05		 Tyco Electronics Corporation Harrisburg, Pa 17105-3608						
DIMENSIONS: mm [INCHES]		TOLERANCES UNLESS OTHERWISE SPECIFIED:		NAME									
		0 PLC	± —	SLIDE SWITCH SLSA-120, SPDT —									
		1 PLC	± —										
		2 PLC	± 0.50[.020]										
		3 PLC	± —										
		4 PLC	± —										
MATERIAL		FINISH		SIZE		CAGE CODE		DRAWING NO		RESTRICTED TO			
—		—		A2		00779		C=1825081		—			
CUSTOMER DRAWING						SCALE		4:1		SHEET 1 of 1		REV B	

Mouser Electronics

Authorized Distributor

Click to View Pricing, Inventory, Delivery & Lifecycle Information:

[TE Connectivity:](#)

[SLSA12004](#)