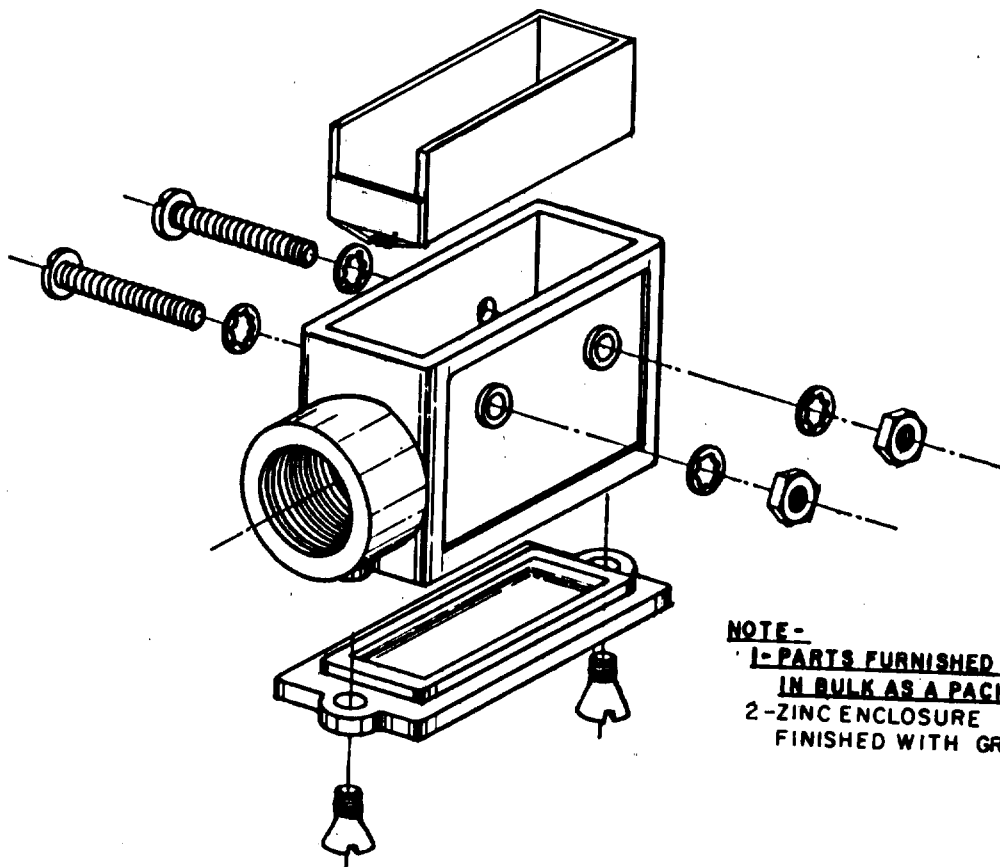
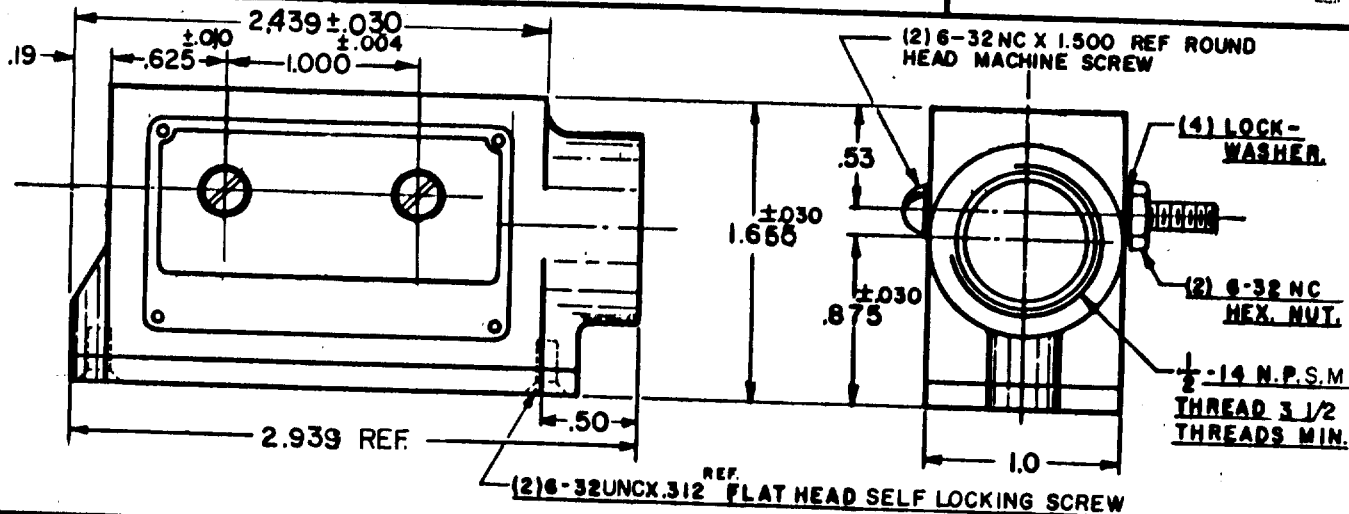


MICRO SWITCH

A DIVISION OF MINNEAPOLIS-HONEYWELL REGULATOR COMPANY
FED. MFR. CODE 91929

PACKET

CATALOG LISTING
3PA28



NOTE -
1-PARTS FURNISHED UNASSEMBLED
IN BULK AS A PACKET
2-ZINC ENCLOSURE
FINISHED WITH GRAY PAINT

THIS DRAWING COVERS A PROPRIETARY ITEM AND IS THE PROPERTY OF MICRO SWITCH, A DIVISION OF MINNEAPOLIS-HONEYWELL REGULATOR CO. THIS DRAWING IS NOT TO BE COPIED OR USED WITHOUT THE APPROVAL OF MICRO SWITCH.

CHARACTERISTICS

ELECTRICAL DATA

CONTACT ARRANGEMENT

SCALE FULL

DO NOT SCALE PRINT

UNLESS OTHERWISE SPECIFIED

DIMENSIONS ARE IN INCHES

TOLERANCES ARE:

ONE PLACE	(.0)	$\pm .030$
TWO PLACE	(.00)	$\pm .018$
THREE PLACE	(.000)	$\pm .008$
ANGLES		\pm

WEIGHT

3PA28

M

DRAWING NUMBER

X2

ISSUE

REPLACES PR-14321

CHECK

REVISIONS

A 073014
2 AUG 92

7 NOV 85

ROB

CHECK

7 NOV 85

CEC

CHECK

6 NOV 85

DRAWN

JAS

FO-50378

Mouser Electronics

Authorized Distributor

Click to View Pricing, Inventory, Delivery & Lifecycle Information:

[Honeywell:](#)

[3PA28](#)