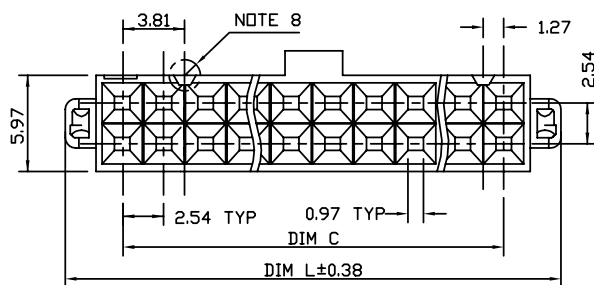
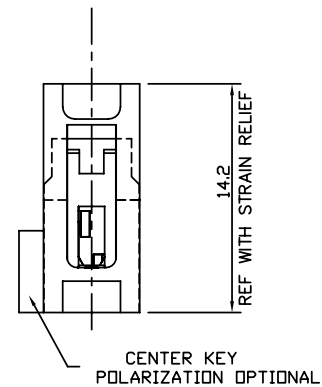
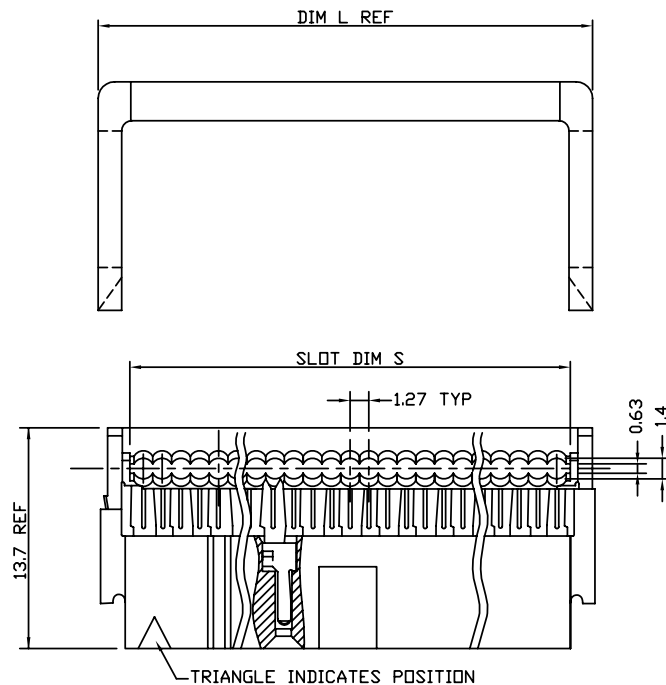

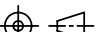




Copyright FCI,

PRODUCT NO.  
SEE TABLE



mat'l. code				tolerances unless otherwise specified				CUSTOMER COPY		<div>www.fciconnect.com</div>	
ltr	ecn no	dr	date	linear	.X ± 0.10			projection <div></div>	title <div>DUAL POLARIZED QUICKIE II LOW PROFILE</div>		
J	V22169	MSC	1992-05-21		.XX ± 0.05						
K	N05-0368	GUL	2005-12-27		.XXX ±						
L	N09-0400	AZH	2010-01-18	angles	± 2			INCH/MM	product family QUICKIE		
				dr	GuLing	12/27/05					
				enr	TaoDeniel	12/27/05					
				chr	TaoDeniel	12/27/05					
				appd	Jason Zhou	12/27/05					
sheet index		revision sheet		L				scale 1:1	A4	dwg no 66432	
				1-2						code NT	
										sheet 1 of 2	

PDM: Rev:L

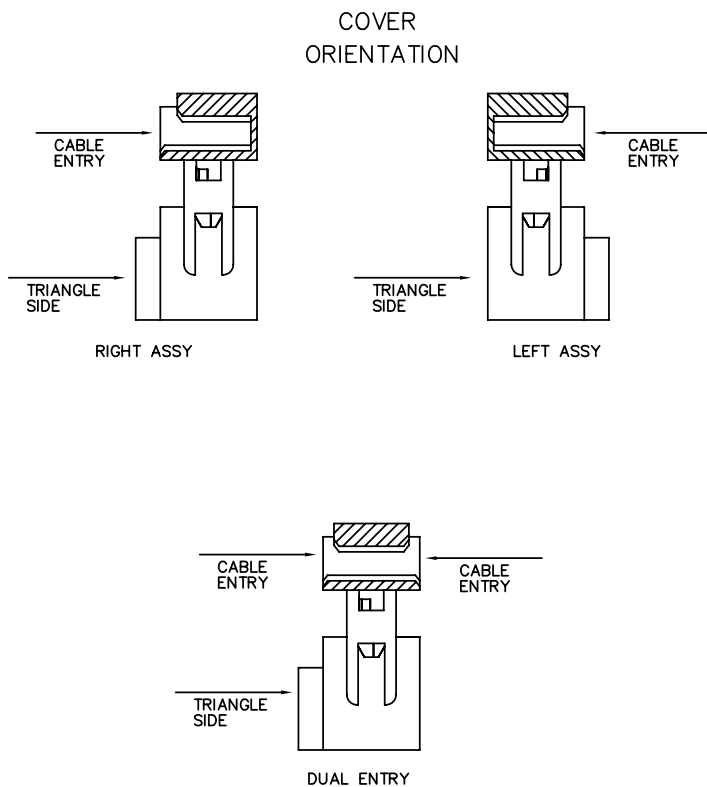
STATUS: Released

Printed: Apr 12, 2011



Copyright FCI.

1						2	3	4	5	6	
PRODUCT NO.	SIZE	DIM L	DIM S	DIM C		DASH NO	COVER ORIENTATION	POLARIZATION	STRAIN RELIEF		
66432-X10/X10LF	2X5	17.27	13.21	10.16		-0XX	THRU	DUAL ENTRY	DUAL POL.	YES	
-X14/X14LF	2X7	22.35	18.29	15.24		-1XX	THRU	DUAL ENTRY	CENTER KEY & DUAL POL.	YES	
-X16/X16LF	2X8	24.89	20.83	17.78		-2XX	BLIND	RIGHT	DUAL	YES	
-X20/X20LF	2X10	29.97	25.91	22.86		-3XX	BLIND	RIGHT	CENTER KEY & DUAL POL.	YES	
-X24/X24LF	2X12	35.05	30.99	27.94		-4XX	BLIND	LEFT	DUAL POL.	YES	
-X26/X26LF	2X13	37.59	33.53	30.48		-5XX	BLIND	LEFT	CENTER KEY & DUAL POL.	YES	
-X30/X30LF	2X15	42.67	38.61	35.56		-6XX	BLIND	RIGHT	CENTER KEY & DUAL POL.	NO	
-X34/X34LF	2X17	47.75	43.69	40.64		-7XX	BLIND	LEFT	CENTER KEY & DUAL POL.	NO	
-X40/X40LF	2X20	55.37	51.31	48.26		-8XX	DISCONTINUED				
-X44/X44LF	2X22	60.45	56.39	53.34		-9XX	DISCONTINUED				
-X50/X50LF	2X25	68.07	64.01	60.96							
66432-X60/X60LF	2X30	80.77	76.71	73.66							



NOTES:

1. TERMINAL MATERIAL: FULL HARD PHOS. BRONZE ALLOY. UNS-C51000.
2. TERMINAL PLATING: 50u"/1.27um MIN Ni UNDERPLATE OVER ENTIRE TERMINAL AND 30u"/0.76um MIN Au OR GXT IN CONTACT AREA ONLY;
3. MOLDING MATERIAL: BASE & COVER-GLASS FILLED POLYESTER. FLAME RETARDANT PER UL94V-0. COLOR-BLUE.
4. CONNECTOR ASSEMBL ES PACKAGED IN TUBES.
5. THE FIRST TWO CAVITY POSITIONS AND THE LAST TWO. ARE IDENTIFIED BY NUMBER.
6. POLARIZING FEATURES ARE DESCRIBED IN TABLE.
7. MOLDING MATERIAL: STRAIN RELIEF-POLYSULFONE. FLAME RETARDANT PER UL 94V-0,COLOR-NATURAL.
8. THE POLARIZING FEATURE ON THIS END IS NON-EXISTANT ON 2X5 AND 2X7 POSITION CONNECTORS.
9. 2X5 POSITION NOT AVAILABLE WITH POLARIZATION SLOT ON CENTER KEY STYLE.
10. PRODUCT NUMBER 66432-XXX LF  
LEAD FREE OPTION
11. WITH "LF" MARK, TERMINAL PLATING: 50u"/1.27um Ni UNDERPLATE OVER ENTIRE TERMINAL AND 30u"/0.76um MIN AU OR GXT IN CONTACT AREA ONLY.
12. FOR LEAD FREE P/N, THE PRODUCT MEET EUROPEAN UNION DIRECTIVES AND OTHER COUNTRY REGULATION AS DESCRIBED IN GS-22-008.
13. FOR LEAD FREE P/N, THE PLASTIC PART WILL WITHSTAND EXPOSURE TO 260°C PEAK TEMPERATURE FOR 10 SECONDS IN A WAVE SOLDER APPLICATION.
14. PRODUCT SPEC. BUS-12-082
15. PLATING OPTIONS: MAY BE EITHER GOLD OR GXT PLATED AT MANUFACTURER'S OPTION.

tolerances unless otherwise specified			CUSTOMER COPY		FCI		www.fciconnect.com		
linear	.X ± 0.1		projection		title DUAL POLARIZED QUICKIE II LOW PROFILE				
	.XX ± 0.05								
	.XXX ±								
angles	±2								
dr	GuLing	12/27/05	INCH/MM		product family		QUICKIE		code
engr	TaoDeniel	12/27/05			size	dwg no		NT	
chr	TaoDeniel	12/27/05	scale		A4	66432		sheet	
appd	Jason Zhou	12/27/05	1:1					2 of 2	