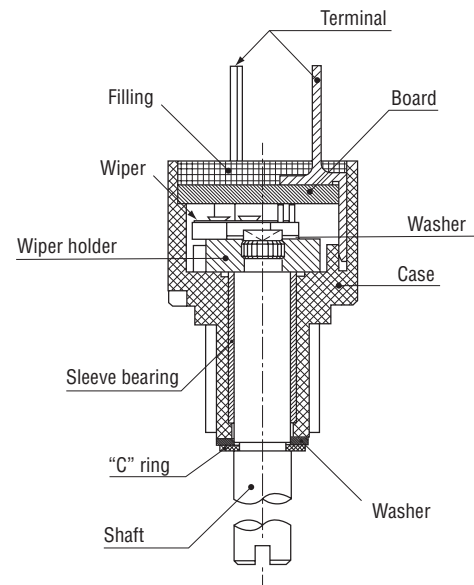


CONDUCTIVE PLASTIC SINGLE TURN TYPE

JC10 series

RoHS compliant

Basic construction
Conductive plastic single turn type

FEATURES

- Compact (ϕ 10 mm)
- Long life
- High resolution (Essentially infinite)
- High following characteristics
- Cost effective
- RoHS compliant

PART NUMBER DESIGNATION

JC10-000-202N

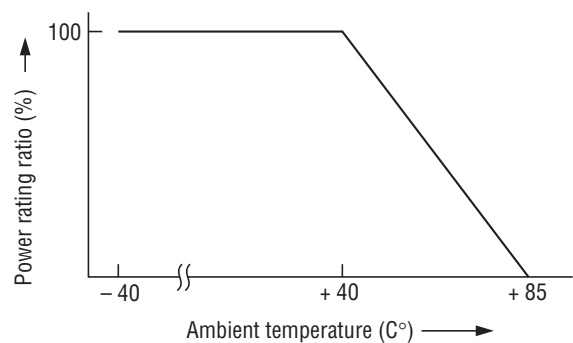
Series name

Nominal resistance value (Ω)
2 k, 5 k, 10 k

LIST OF PART NUMBERS

Nominal resistance value	Part number
2 k Ω	JC10-000-202N
5 k Ω	JC10-000-502N
10 k Ω	JC10-000-103N

RATED POWER DERATING CURVE



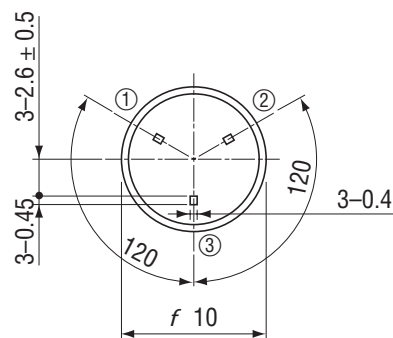
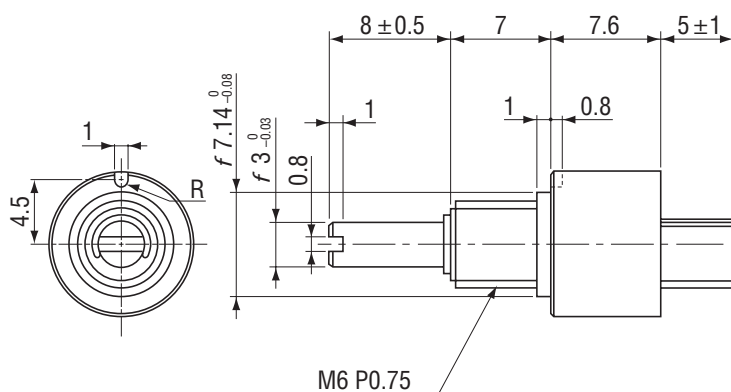
● Electrical characteristics

Nominal resistance value	2 kΩ, 5 kΩ, 10 kΩ
Resistance tolerance	± 20 %
Resolution	Essentially infinite
Independent linearity	± 2 %
Effective electrical angle	324° ± 5°
Power rating (at 40 °C)	0.125 W
Dielectric strength	500, 1min Vrms
Insulation resistance	100 (at DC 500 V) MΩ minimum
Temp. coefficient resistance	± 400 ppm/°C
Output smoothness	0.1 % maximum

Mechanical angle	360° continuous
Rotational torque mN·m (gf·cm) maximum	1.96 {20}
Rotational life (cycles)	5 million
Strength of tighten screw N·cm (kgf·cm)	49 {5} maximum

Operating temp. range	°C	-30 ~ 85
Net weight	g	Approx. 3
Protection grade		IP-40

(Unit : mm)



Technical drawing of a bolt and nut assembly. The drawing includes a front view of the nut (left), a side view of the nut (middle), a front view of the bolt (right), and a side view of the bolt (far right). The nut is labeled "M6, P=0.75". Dimensions are given in millimeters: nut width 9, nut height 2, bolt head diameter 11, bolt head thickness 6.4, bolt shank diameter 6.4, bolt shank length 1.3, and bolt head height 0.63.