

(Offset) 0.20±0.10



| mat'l. code | | | | tolerances unless otherwise specified | | | | CUSTOMER COPY | | title | |
|-------------|----------|------|----------|---------------------------------------|--------------|---------|--|---------------|--|--------------------|--------|
| ltr | ecn no | dr | dte | | | | | | | | |
| A | T05-0080 | A.C. | 7/11/05 | lineor | .XX ±.20 | | | projection | | CF RECEPTACLE | |
| B | T05-0180 | A.C. | 7/25/05 | | .XXX ±.10 | | | | | WITH GROUNDING PIN | |
| C | T05-0292 | A.C. | 12/22/05 | angles | 0° ±.3° | | | | | | |
| | | | | dr | ALLEN CHANG | 6/23/05 | | MM | | product family | CF |
| | | | | engr | ALLEN CHANG | 6/23/05 | | | | size | dwg no |
| | | | | chr | STERLING LIN | 7/11/05 | | scale | | | |
| | | | | appl | H.C. LIOU | 7/11/05 | | | | | |
| sheet | revision | | | | | | | | | | sheet |
| index | sheet | 1 | 2 | 3 | 4 | | | | | | 1 of 4 |

NOTES:

1. Materials:
Housing: High Temp Thermoplastic , UL94V-0, Color/Black.
Contact: Copper Alloy.
Grounding Pin: Copper Alloy.
2. Specification:
Product Spec: GS-12-240.
Package Spec: GS-14-1016.
3. Plating Spec:
Terminal: Under Plated--50u" Min. Nickel.
Solder Tail Area--120u" Min. Tin/Lead.
Contact Area--Selective Gold Plating.
Grounding Pin: Under Plated--50u" Min. Nickel.
Contact Area--Gold Flash.
4. The Housing Will Withstand Exposure to 260°C Peak Temperature For 10 Seconds In A Convection, IR Or Vaper Phase Reflow Oven.
5. This Product (10056003-X50XXXLF) Meets the European Union Directive as Described in GS-22-008.
6. The Product Where The Part Number Ends In "LF" Meet The Criteria Shown In The NOTES 4 And 5, are Considered RoHS Compatible.

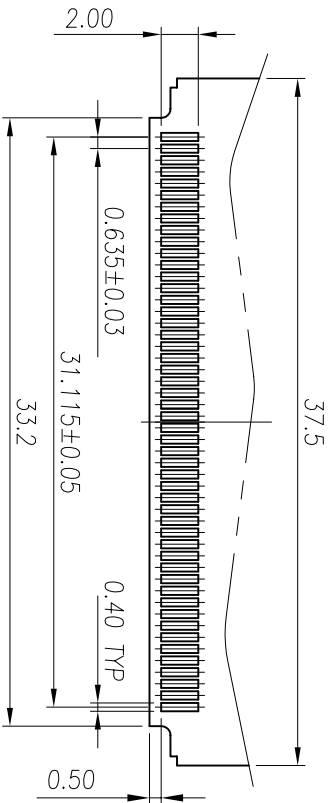
7. Part Number Description:
P/N: **10056003-X50XXXLF**

PLATING OPTION FOR SOLDER TAIL AREA:
BLANK: 120u" Min. TIN/LEAD.
1LF: 120u" Min. MATTE TIN.
2LF: GOLD FLASH.

ORIENTATION IN THE PACKAGE:
BLANK: NORMAL. (SEE FIGURE 1)
R: TURN OVER THE CONNECTOR IN PACKAGE.
(SEE FIGURE 2).

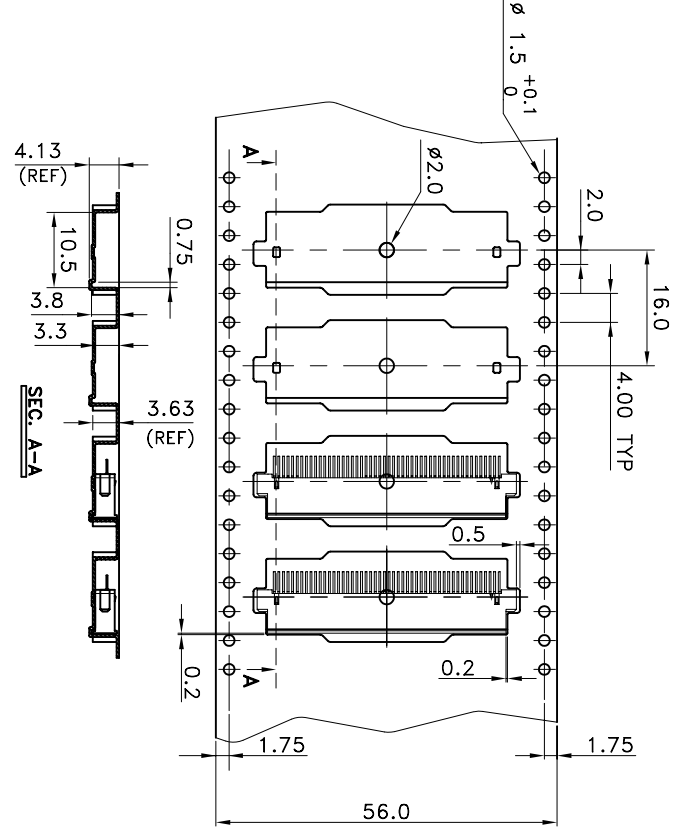
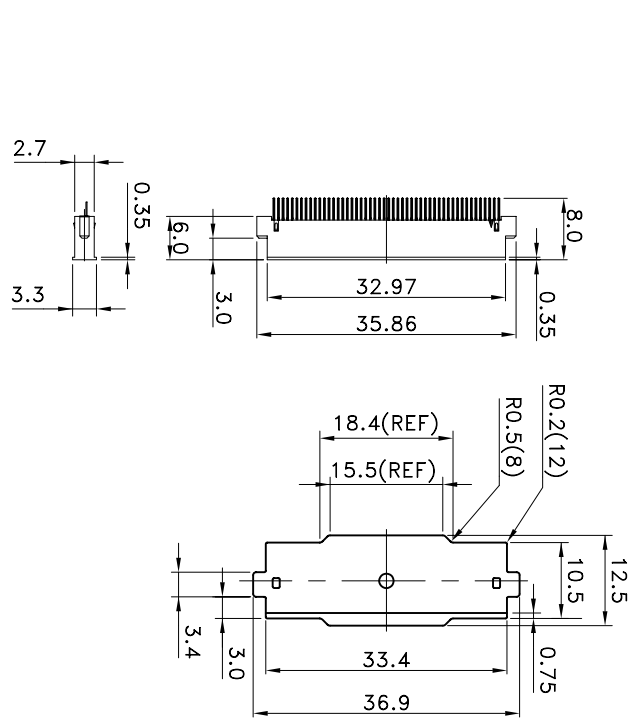
P: TAPE & REEL.
PIN COUNT.

PLATING OPTION FOR CONTACT AREA:
0: 15u" GOLD PLATE
1: 10u" GOLD PLATE



RECOMMENDED PCB LAYOUT FORBOTH SIDES

| mat'l. code | | | | tolerances unless otherwise specified | | | | CUSTOMER COPY | | title | | | |
|-------------|----------|----|------|---------------------------------------|---------|----------|-----------|---------------|----|----------------|--------------|--------------------|-------------|
| ltr | ecn no | dr | date | linear | .X ±.30 | .XX ±.20 | .XXX ±.10 | projection | MM | product family | CF | WITH GROUNDING PIN | code |
| C | | | | | | | | | | dr | ALLEN CHANG | 6/23/05 | size dwg no |
| | | | | | | | | | | engr | ALLEN CHANG | 6/23/05 | CF |
| | | | | | | | | | | chr | STERLING LIN | 7/11/05 | scale |
| | | | | | | | | | | appr | H C LIU | 7/11/05 | N/A |
| sheet | revision | | | | | | | | | | | | code |
| index | sheet | | | | | | | | | | | | sheet |
| | | | | | | | | | | | | | 3 of 4 |

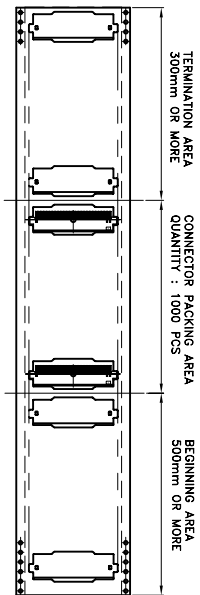


SCALE 1:5:1

IN THE DIRECTION OF PULLING

- NOTES:
1. CARRIER TYPE : PS , t=0.33mm.
 2. COVER TYPE : PE.
 3. PLASTIC REEL : PS.

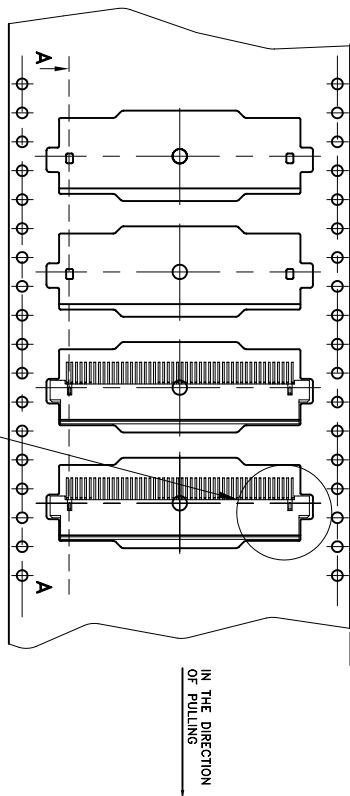
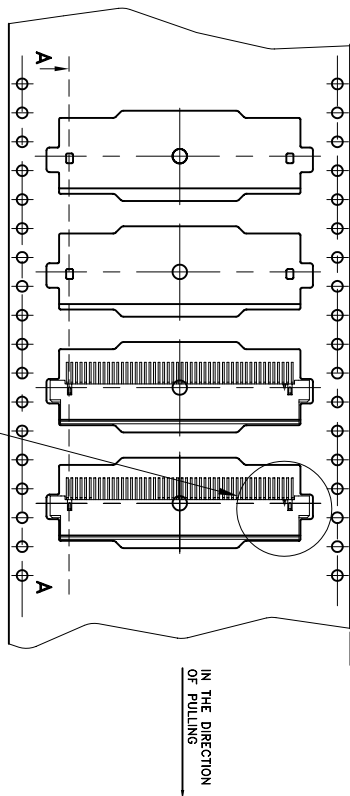
COMPOSITION OF PACKING



IN THE DIRECTION OF PULLING

| mat'l. code | | | | tolerances unless otherwise specified | | | | CUSTOMER COPY | | title | |
|-------------|-----|----|----------|---------------------------------------|--------|--------------|---------|---------------|--|------------------|--------------------|
| litr | ecr | no | dr | date | lineor | .XX ±.30 | | projection | | CF RECEPTACLE | www.fciconnect.com |
| C | | | | | | .XXX ±.10 | | | | W/ GROUNDING PIN | |
| | | | | | angles | 0° ±2° | | | | | |
| | | | | | dr | ALLEN CHANG | 6/23/05 | | | product family | CF |
| | | | | | engr | ALLEN CHANG | 6/23/05 | | | size dwg no | 10056003 |
| | | | | | chr | STERLING LIN | 7/11/05 | | | code | |
| | | | | | appr | JAMES HSU | 7/11/05 | | | sheet | 2 of 4 |
| sheet | | | revision | | | | | | | | |
| index | | | sheet | | | | | | | | |

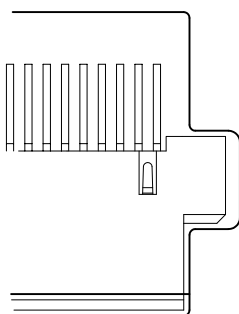
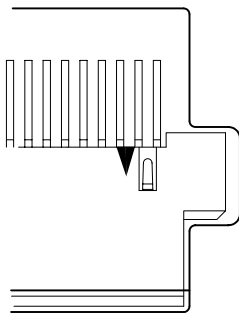
P/N: 10056003-X50XXLF



P/N: 10056003-X50XXRLF

THE SURFACE WITH TRIANGLE MARK WILL BE ON THE TOP SIDE

THE SURFACE WITHOUT TRIANGLE MARK WILL BE ON THE TOP SIDE



| mat'l. code | | | | tolerances unless otherwise specified | | | | CUSTOMER COPY | | title | |
|-------------|----------|----|------|---------------------------------------|--------------|------------|------------------|--------------------|--|---------------|--|
| litr | ecn no | dr | date | lineor | .X ±.30 | projection | CF | A FCI | | CF RECEPTACLE | |
| C | | | | angles | .XXX ±.10 | MM | W/ GROUNDING PIN | www.fciconnect.com | | code | |
| | | | | dr | ALLEN CHANG | 6/23/05 | product family | CF | | code | |
| | | | | engr | ALLEN CHANG | 6/23/05 | size dwg no | 10056003 | | sheet | |
| | | | | chr | STERLING LIN | 7/11/05 | scale | N/A | | 4 of 4 | |
| | | | | appd | JAMES HSU | 7/11/05 | | | | | |
| sheet | revision | | | | | | | | | | |
| index | sheet | | | | | | | | | | |

code code
22526