

## DESCRIPTION

An adjustable recessed fixture for trimless installation suitable for wall wash and accent applications. **Utilizes 38 Watt LED head.**

For new construction applications. Insulation must be kept 3" from all sides and at least 1" above the housing.

Catalog #		Type
Project		
Comments		Date
Prepared by		

## SPECIFICATION FEATURES

### A... Housing

I.C. Rated Housing, junction box & trimless meshplate assembly are all steel construction.

**Trimless** housing includes perforated meshplate for trimless installation in drywall/plaster ceilings by allowing the ceiling's mudding compound to be applied right up to the edge of the fixture opening. Housing can accommodate 0.50" to 1.25" ceiling thickness. Optional Chicago Plenum configuration available.

### B... System Protection:

Aluminum die cast construction provides exceptional thermal management to yield 70% lumen maintenance after 50,000 hours of operation.

### C... Junction Box

Junction Box is UL listed for through branch wiring, 6 #12 90° C supply conductors or 60° C for end of run. The fixture is also UL listed as 'access above ceiling not required'.

### D... Electrical

Electrical accessible through ceiling opening. J-Box located on the side wall of the housing behind removable access doors. Integral individual low voltage LED drivers on individually removable "trays" for easy maintenance. Dimmable 10 - 100% with 0-10VDC Input.

### E... LED

One (1) - 38W LED head in 15°, 25°, 40°, or Wall Wash beam. 3000K or 4000K color temp. Rectangular lamp head with locking aiming from 0° to 60°. High CRI of 85 with excellent color consistency of ± 50°K color temperature.

### F... Mounting

Butterfly Brackets accept 1/2" EMT, C Channel, Tbar fasteners, and bar hangers. Four tabs on housing for securing to structure.

### G... Labels

cULus listed for non-type IC applications, suitable for use in damp locations.

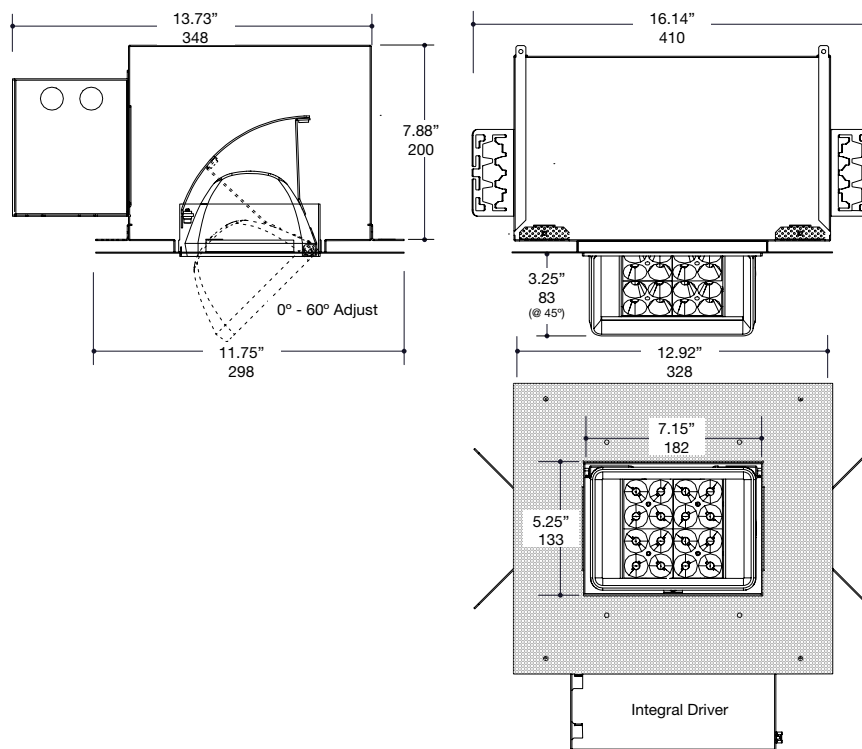
Ceiling Cut-Out:

C1 = 7.80" x 5.90"

## COMBOLIGHT® Next Generation Recessed Wall Wash Fixture

1 Light  
38W LED

Trimless  
New Construction



**DIMMABLE**

## ORDERING INFORMATION



C1			LRG	E		N		N
<b>Configuration</b> C1 = One (1) Light	<b>Beam Distribution</b> N = 15° Narrow Beam M = 25° Medium Beam W = 40° Wide Beam A = Asymmetric Wall Wash	<b>LED Head</b> LRG = Large 38W	<b>Power Supply Voltage</b> 1 = 120V 2 = 277V 4 = 240V	<b>Interior Finish</b> W = White B = Black S = Industrial Silver	<b>Trim Insert</b> N = Trimless	<b>Trim Insert Finish</b> N = Trimless		
<b>Housing</b> N = New Construction C = Chicago Plenum	<b>Color Temp</b> 30 = 3000K 40 = 4000K	<b>Power Supply</b> E = LED Driver						