

## Type 12 Mild Steel Junction Box 1414 Series

Lift-Off Cover with Clamps



### Application

- Designed for use as instrument enclosures, electric, hydraulic or pneumatic control housings, electrical junction boxes or terminal wiring enclosures.
- Provides a degree of protection from falling dirt, dust, oil and water.

### Standards

- UL 508 Type 12 and 13
- CSA Type 12 and 13
- Complies with
  - NEMA Type 12 and 13
  - JIC EGP-1-1967 unless marked<sup>1</sup>
  - IEC 60529, IP54

### Construction

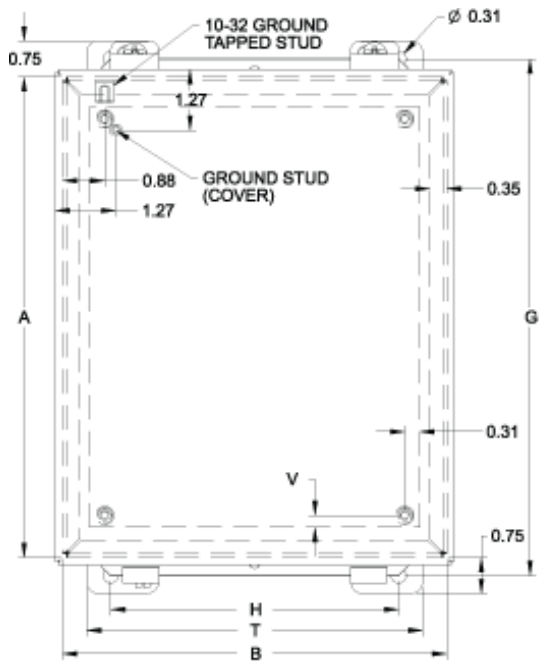
- Body formed from 16 gauge or 14 gauge steel. Covers are formed from 14 gauge steel.
- Smooth, continuously welded seams without knockouts, cutouts or holes.
- Welded brackets provide for enclosure mounting.
- Lift off cover is secured with stainless steel clamps and plated steel screws and retained with a plated chain when open.
- Seamless poured-in place gasket.
- Models larger than 4" x 4" include a removable 14 gauge inner panel.
- Internal threaded weld studs are provided for mounting inner panels.
- A bonding stud is provided on the door and a grounding stud is provided on the enclosure.

### Finish

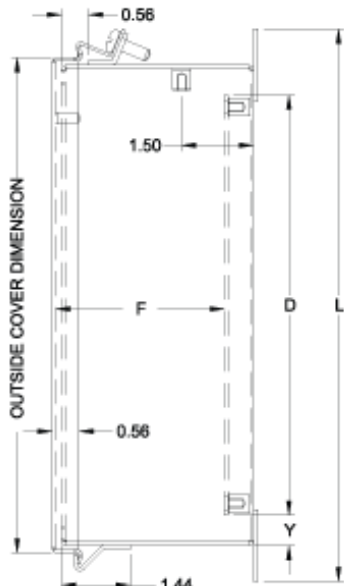
- Cover and enclosure are phosphatized and finished in ANSI 61 gray recoatable powder coating.
- Removable inner panel is finished in white powder coating.

### Accessories

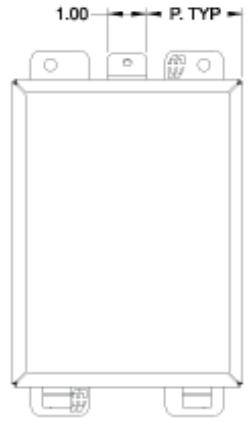
- Inner Panels
- Door Clamping Hardware
- Heaters
- Terminal Kit Assemblies
- Swing Panel Kit
- Ventilation
- Filtered Fans
- Type 1 Louvered Ventilating Plates
- Temperature Controls



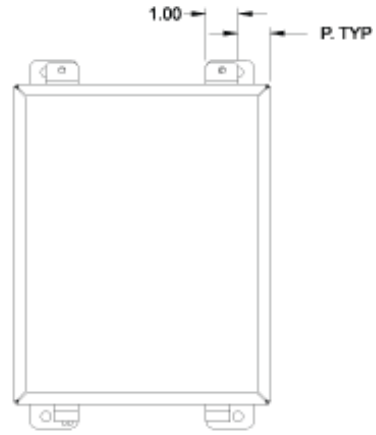
**Front View**



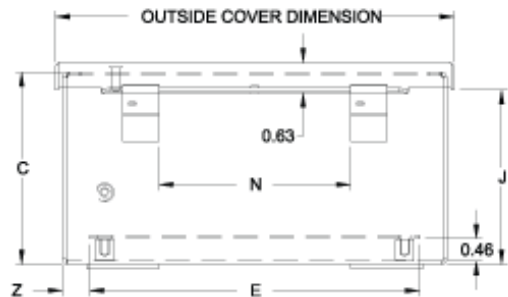
**Side View**



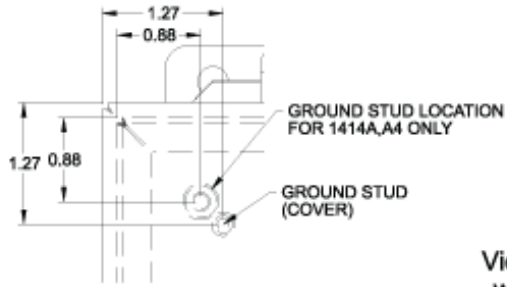
View showing clamp location when one clamp is used



View showing clamp location when two clamps are used (where B=8 or more)



**Bottom View**



| Part No.            | Overall Dimensions |       |       |       |       |      |       |       |      |       |       | Cover Dimensions |       |      |       |      | Ship Wt. (lbs) |      |    |
|---------------------|--------------------|-------|-------|-------|-------|------|-------|-------|------|-------|-------|------------------|-------|------|-------|------|----------------|------|----|
|                     | A                  | B     | C     | D     | E     | F    | G     | H     | J    | L     | N     | P                | T     | V    | Y     | Z    |                |      |    |
| 1414A <sup>1</sup>  | 4.00               | 4.00  | 3.00  | -     | -     | -    | 4.75  | 2.00  | 2.64 | 5.50  | 1.31  | 4.31             | 4.31  | 1.50 | 3.00  | -    | -              | -    | 2  |
| 1414C <sup>1</sup>  | 6.00               | 4.00  | 3.00  | 4.88  | 2.88  | 2.51 | 6.75  | 2.00  | 2.64 | 7.50  | 1.31  | 6.31             | 4.31  | 1.50 | 3.00  | 0.31 | 0.56           | 0.56 | 3  |
| 1414G               | 8.00               | 6.00  | 3.50  | 6.75  | 4.88  | 3.01 | 8.75  | 4.00  | 3.14 | 9.50  | 2.88  | 8.31             | 6.31  | 2.50 | 5.00  | 0.25 | 0.63           | 0.56 | 7  |
| 1414A4 <sup>1</sup> | 4.00               | 4.00  | 4.00  | -     | -     | -    | 4.75  | 2.00  | 3.64 | 5.50  | 1.31  | 4.31             | 4.31  | 1.50 | 3.00  | -    | -              | -    | 3  |
| 1414C4 <sup>1</sup> | 6.00               | 4.00  | 4.00  | 4.88  | 2.88  | 3.51 | 6.75  | 2.00  | 3.64 | 7.50  | 1.31  | 6.31             | 4.31  | 1.50 | 3.00  | 0.31 | 0.56           | 0.56 | 4  |
| 1414E               | 6.00               | 6.00  | 4.00  | 4.88  | 4.88  | 3.51 | 6.75  | 4.00  | 3.64 | 7.50  | 2.88  | 6.31             | 6.31  | 2.50 | 5.00  | 0.31 | 0.56           | 0.56 | 5  |
| 1414I               | 10.00              | 8.00  | 4.00  | 8.75  | 6.88  | 3.51 | 10.75 | 6.00  | 3.64 | 11.50 | 4.00  | 10.31            | 8.31  | 1.00 | 7.00  | 0.25 | 0.63           | 0.56 | 10 |
| 1414K               | 12.00              | 10.00 | 5.00  | 10.75 | 8.88  | 4.51 | 12.75 | 8.00  | 4.64 | 13.50 | 6.00  | 12.31            | 10.31 | 1.00 | 9.00  | 0.25 | 0.63           | 0.56 | 13 |
| 1414M6              | 14.00              | 12.00 | 6.00  | 12.75 | 10.88 | 5.51 | 14.75 | 10.00 | 5.64 | 15.50 | 8.00  | 14.31            | 12.31 | 1.00 | 11.00 | 0.25 | 0.63           | 0.56 | 19 |
| 1414O6              | 16.00              | 14.00 | 6.00  | 14.75 | 12.88 | 5.51 | 16.75 | 12.00 | 5.64 | 17.50 | 10.00 | 16.31            | 14.31 | 1.00 | 13.00 | 0.25 | 0.63           | 0.56 | 23 |
| 1414M8              | 14.00              | 12.00 | 8.00  | 12.75 | 10.88 | 7.51 | 14.75 | 10.00 | 7.64 | 15.50 | 8.00  | 14.31            | 12.31 | 1.00 | 11.00 | 0.25 | 0.63           | 0.56 | 20 |
| 1414O10             | 16.00              | 14.00 | 10.00 | 14.75 | 12.88 | 9.51 | 16.75 | 12.00 | 9.64 | 17.50 | 10.00 | 16.31            | 14.31 | 1.00 | 13.00 | 0.25 | 0.63           | 0.56 | 25 |

<sup>1</sup> Does not meet JIC requirements

Data subject to change without notice

