

Remote air flow rate monitoring and system automation control can now be achieved through the use of 4-20 mA output signals. Our 4-20 mA analog outputs are proportional to system flow rates and can be used with PLC controlled operations to monitor system performance. Those same outputs provide digital displays for direct readings in SCFM when paired with our LCD Digital Readout option. Combined with our Variable Frequency Drives, you can now achieve a completely automated system capable of adjusting blower performance to meet changing system demands. Maintaining your system at peak performance gives your company the competitive edge needed in today's marketplace.

### DIFFERENTIAL PRESSURE TRANSMITTER

- 4-20 mA signal output control signals provide flow rate monitoring capabilities from remote locations
- NEMA 1R—raintight enclosure protects the integrated DC power supply and rugged differential pressure transducer
- Suitable for remote mounting up to 10' from flow meter

- Weight: 3 oz.
- Signal output: 4-20 mA, DC<sup>1</sup>
- Hi/Lo pressure fittings feature snap lock action to insure trouble-free connections<sup>2</sup>
- System includes standard flow meter for on-site readings and troubleshooting
- Operating temperature: 0°F to 150°F
- Drawing available

### LCD DIGITAL READOUT OPTION

- Factory configured to display direct readings in SCFM to a remote location up to 50' from signal output<sup>1</sup>
- NEMA 4,IP65 enclosure ready for panel mount installation power supply and rugged differential pressure transducer
- Suitable for remote mounting up to 10' from flow meter installation
- Power input: 120 VAC, 50/60 Hz AC, Field configurable to 240VAC
- Display: 5 digit, 7 segment, .5" high LED w/3.3 Hz update rate
- Operating temperature: 10°C to 40°C
- Weight: 1 lb., 14 oz.
- Drawing available

**Note 1: 4-20mA output control wiring to be customer supplied. Shielded, 2 conductor cables, 22AWG is recommended for runs up to 100'. For longer runs contact factory.**

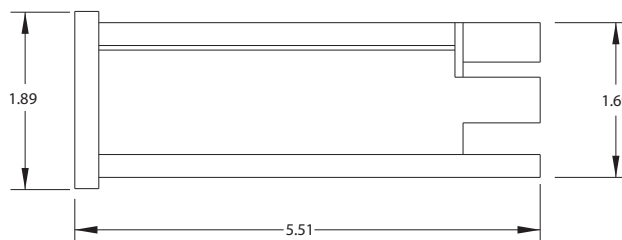
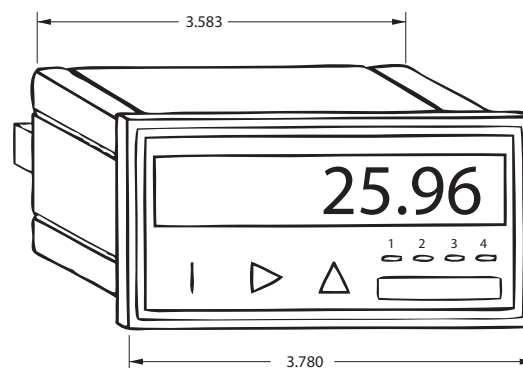
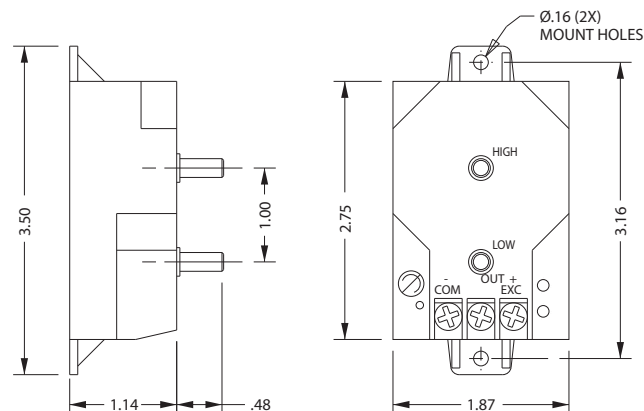
**Note 2: Use 5/16" OD stiff wall tubing — connect "Lo" on flowmeter to "Lo" on 4-20 mA enclosure, "Hi" on flowmeter to "Hi" on 4-20 mA enclosure. Tubing must be equal in length (maximum length is 10 feet).**

### 4-20 mA

FM20S030Q	FM20S045Q	FM20S065Q	FM20S125Q	FM20S175Q	FM20S225Q	FM30S250Q	FM30S350Q	FM30S475Q	FM40S450Q	FM40S600Q	FM40S850Q
550838	550839	550840	880841	880842	550843	550844	550845	550846	550847	550848	550849

### LCD DISPLAY

FM20L030Q	FM20L045Q	FM20L065Q	FM20L125Q	FM20L175Q	FM20L225Q	FM30L250Q	FM30L350Q	FM30L475Q	FM40L450Q	FM40L600Q	FM40L850Q
550860	550861	550862	550863	550864	550865	550866	550867	550868	550869	550870	550871



This document is for informational purposes only and should not be considered as a binding description of the products or their performance in all applications. The performance data on this page depicts typical performance under controlled laboratory conditions. AMETEK is not responsible for blowers driven beyond factory specified speed, temperature, pressure, flow or without proper alignment. Actual performance will vary depending on the operating environment and application. AMETEK products are not designed for and should not be used in medical life support applications. AMETEK reserves the right to revise its products without notification. The above characteristics represent standard products. For product designed to meet specific applications, contact AMETEK Technical & Industrial Products Sales department.

AMETEK TECHNICAL & INDUSTRIAL PRODUCTS  
75 North Street, Saugerties, NY 12477  
USA: +1 215-256-6601 - Europe: +44 (0) 845 366 9664 - Asia: +86 21 5763 1258  
Customer Service Fax: +1 215.256.1338  
www.ametektip.com