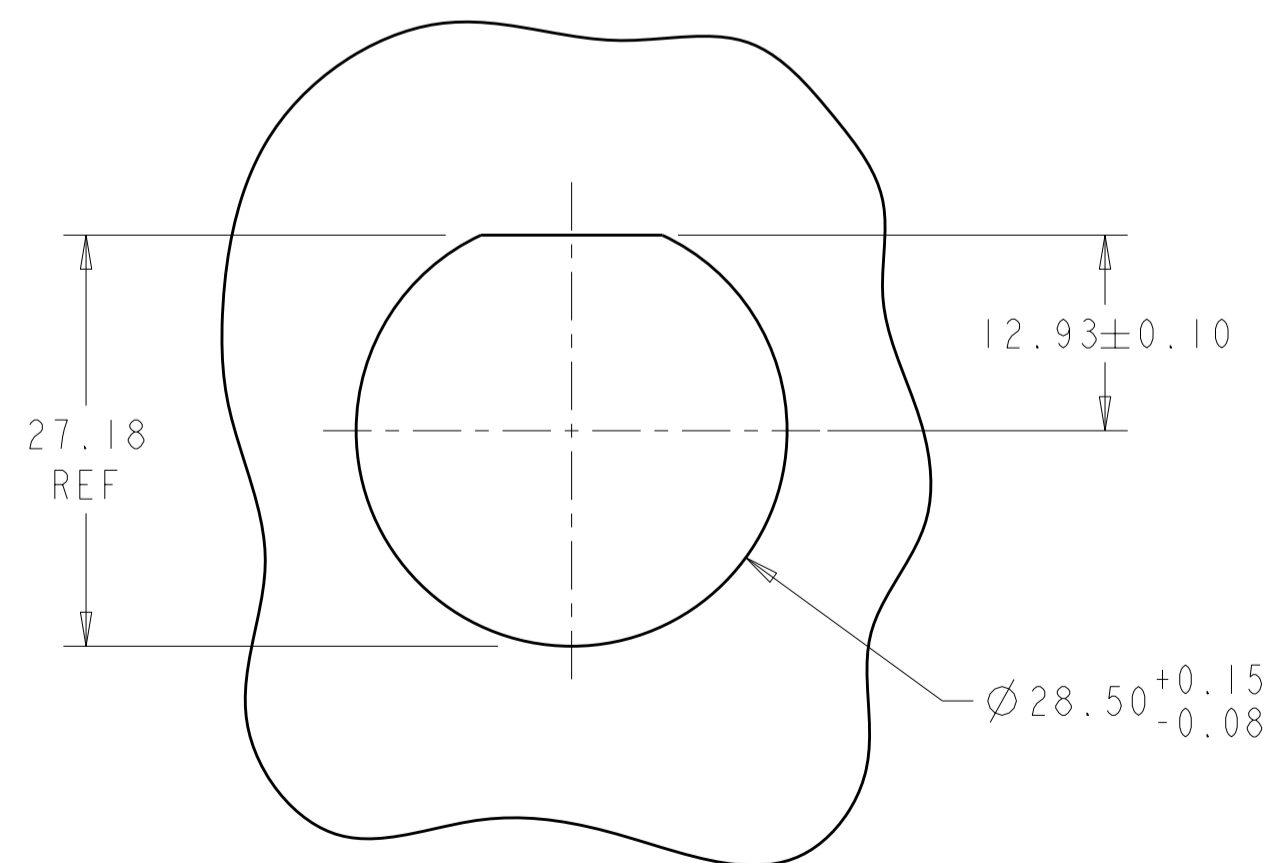
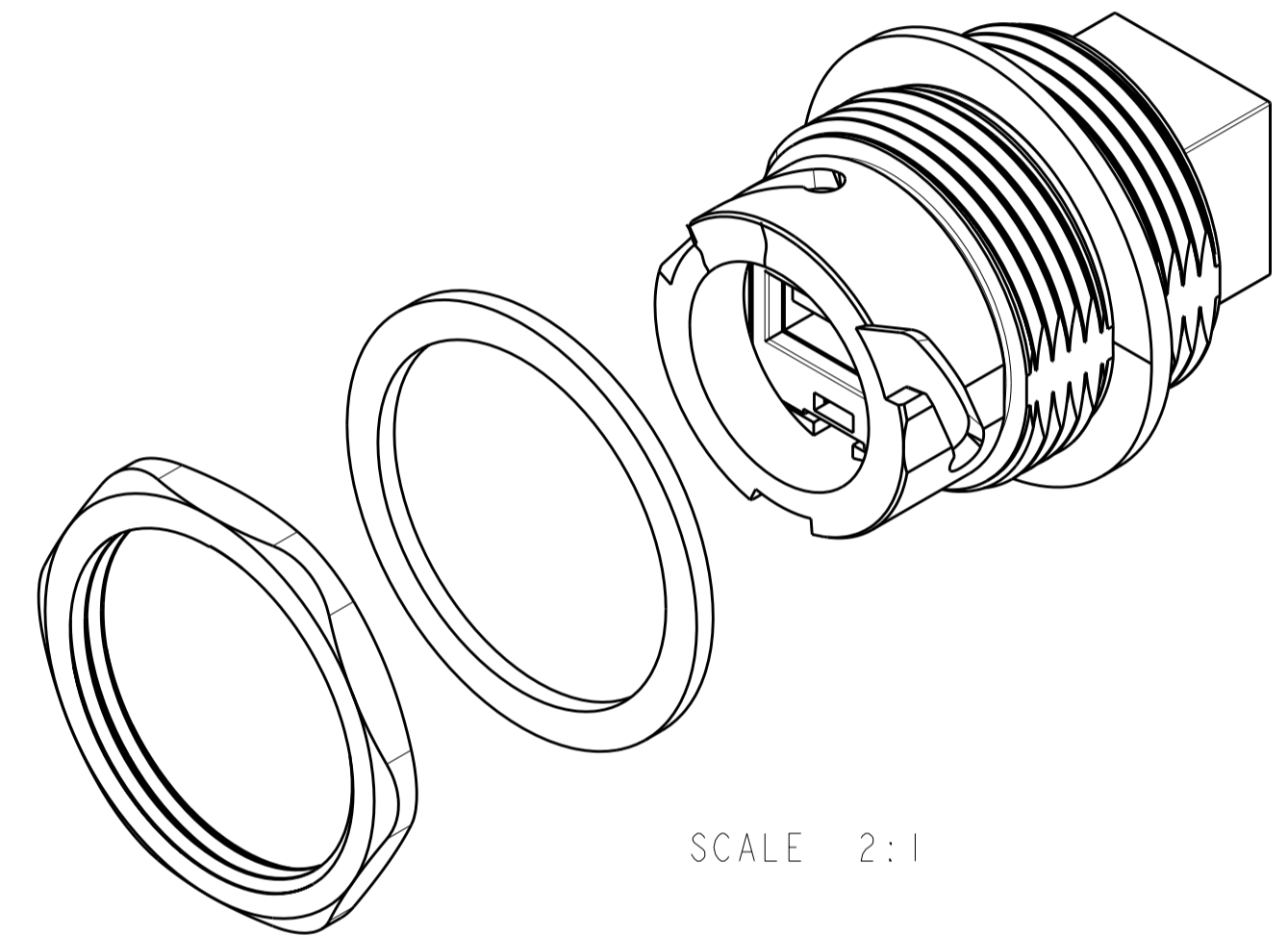
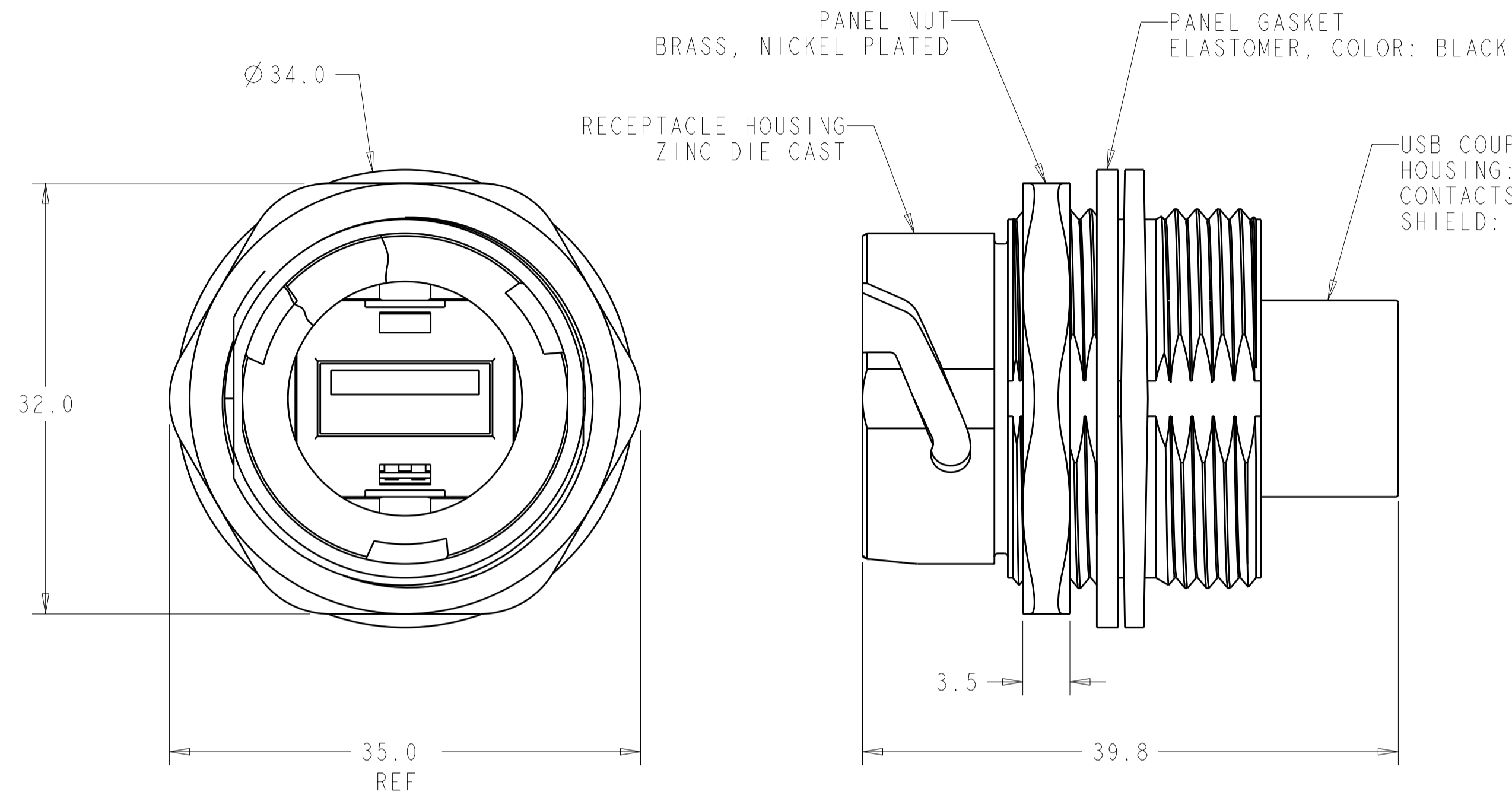




LOC	DIST	REVISIONS					
		P	LTR	DESCRIPTION	DATE	DWN	APVD
-	-		A	REVISED PER ECO-09-017978	19AUG2009	SS	MS

RECOMMENDED PANEL CUTOUT

1. CONNECTOR MAY BE FRONT OR REAR MOUNTED TO A MAXIMUM PANEL THICKNESS OF 3.2 mm.
2. PANEL NUT AND PANEL GASKET ARE PACKAGED UNASSEMBLED IN POLYBAG.
3. COUPLER LINES CROSSOVER BETWEEN POSTS.
4. THIS PRODUCT HAS NOT COMPLETED VALIDATION TESTING.
5. PACKAGE KITS IN A TE 12120 BOX; MAXIMUM BOX WEIGH SHALL NOT EXCEED 35 POUNDS. USE BUBBLE WRAP ON THE BOTTOM BEFORE FILLING AND ON THE TOP TO FILL THE SPACE IN THE BOX.

THIS DRAWING IS A CONTROLLED DOCUMENT FOR TYCO ELECTRONICS CORPORATION IT IS SUBJECT TO CHANGE AND THE CONTROLLING ENGINEERING ORGANIZATION SHOULD BE CONTACTED FOR THE LATEST REVISION.		DWN S. WELDON 12MAY2008		 Tyco Electronics Harrisburg, PA 17105-3608		PART NUMBER	
DIMENSIONS:		TOLERANCES UNLESS OTHERWISE SPECIFIED:		NAME		RECEPTACLE KIT, METAL SHELL, SERIES A TO SERIES A SEALED, INDUSTRIAL USB CONNECTOR	
mm		0 PLC ±1 1 PLC ±0.2 2 PLC ±0.10 3 PLC ±0.000 4 PLC ±0.0000 ANGLES ±1°		PRODUCT SPEC 108-2318 APPLICATION SPEC 114-13211		SIZE A2	
		MATERIAL		CAGE CODE		DRAWING NO	
FINISH		WEIGHT		00779		C-2058364	
-		-		-		-	
CUSTOMER DRAWING				SCALE		SHEET	
				3.1		OF	
						REV A	