

DO NOT
SCALE FROM
THIS PRINT

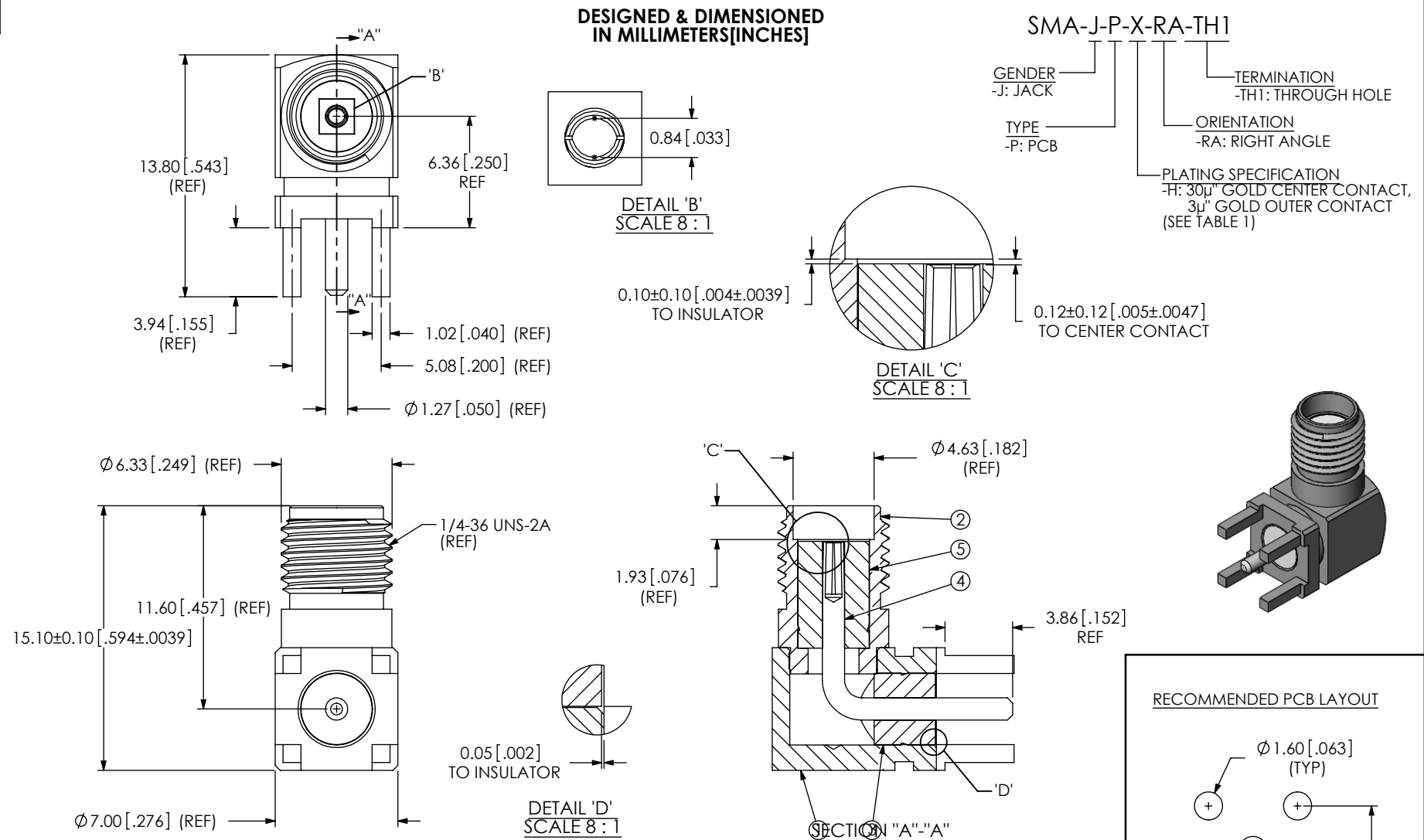


TABLE 1		
ITEM	COMPONENT	-H
1	BODY	SMA-J-P-F-RA-TH1-BDY
2	SHELL	SMA-J-P-F-RA-TH1-SHL
3	INSULATOR 1	SMA-INS-009
4	SOCKET	SMA-J-P-H-RA-TH1-SKT
5	INSULATOR 2	SMA-INS-005

- NOTES:
- ⊕ REPRESENTS A CRITICAL DIMENSION.
 - PUSHOUT FORCE FOR INSULATOR: 44.48 N[10 LB] MIN.
 - SEE CO-HD-WI-3040-M RF PACKAGING FOR PACKAGING INSTRUCTIONS. USE SAMTEC TRAY TY-SMA001-1 AND TY-SMA001-2. QUANTITIES LESS THAN A FULL TRAY WILL NOT BE PACKAGED IN TRAYS.
 - NOTE DELETED.

F:\DWG\MISC\MKTG\SMA-J-P-X-RA-TH1-MKT.SLDDRW

UNLESS OTHERWISE SPECIFIED, DIMENSIONS ARE IN MILLIMETERS. TOLERANCES ARE:

DECIMALS	ANGLES
.X: ±0.3 [.01]	5°
.XX: ±0.13 [.005]	
.XXX: ±0.051 [.0020]	

PROPRIETARY NOTE

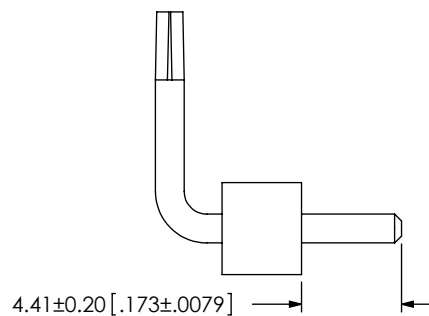
THIS DOCUMENT CONTAINS INFORMATION CONFIDENTIAL AND PROPRIETARY TO SAMTEC, INC. AND SHALL NOT BE REPRODUCED OR TRANSFERRED TO OTHER DOCUMENTS OR DISCLOSED TO OTHERS OR USED FOR ANY PURPOSE OTHER THAN THAT WHICH IT WAS OBTAINED WITHOUT THE EXPRESSED WRITTEN CONSENT OF SAMTEC, INC.

520 PARK EAST BLVD, NEW ALBANY, IN 47150
PHONE: 812-944-6733 FAX: 812-948-5047
e-Mail: info@SAMTEC.com code: 55322

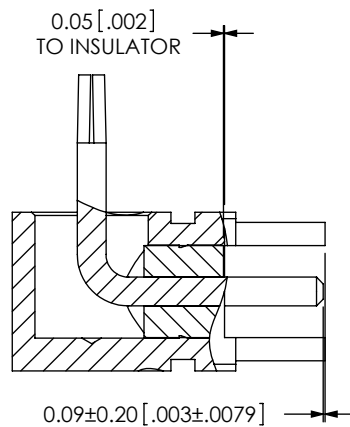
SMA RIGHT ANGLE, JACK- 50 OHM

SMA-J-P-X-RA-TH1

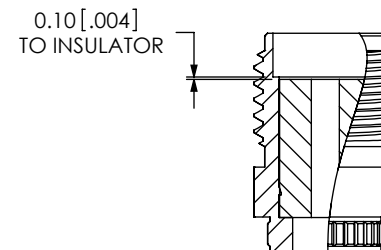
BY: R MUSSER 01/28/2008 SHEET 1 OF 2



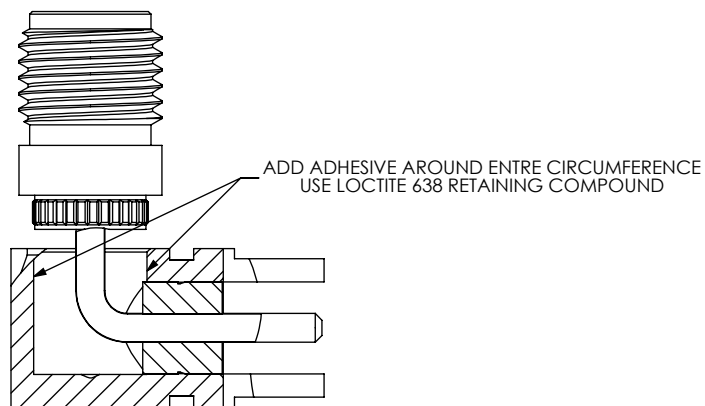
IN-PROCESS 1
INSERT INSULATOR 1



IN-PROCESS 2
INSERT INTO BODY



IN-PROCESS 3
ADD INSULATOR 2 TO SHELL



IN-PROCESS 4
ADD ADHESIVE TO BODY

F:\DWG\MISC\MKTG\SMA-J-P-X-RA-TH1-MKT.SLDDRW

PROPRIETARY NOTE

THIS DOCUMENT CONTAINS INFORMATION
CONFIDENTIAL AND PROPRIETARY TO
SAMTEC, INC. AND SHALL NOT BE REPRODUCED
OR TRANSFERRED TO OTHER DOCUMENTS OR
DISCLOSED TO OTHERS OR USED FOR ANY
PURPOSE OTHER THAN THAT WHICH IT WAS
OBTAINED WITHOUT THE EXPRESSED WRITTEN
CONSENT OF SAMTEC, INC.

DO NOT SCALE DRAWING

SHEET SCALE: 3:1

samtec

520 PARK EAST BLVD, NEW ALBANY, IN 47150
PHONE: 812-944-6733 FAX: 812-948-5047
e-Mail: info@SAMTEC.com code: 55322

DESCRIPTION:

SMA RIGHT ANGLE, JACK- 50 OHM

DWG. NO.

SMA-J-P-X-RA-TH1

BY: R MUSSER 01/28/2008 SHEET 2 OF 2