

50/60 Hz Current Transformer – CS2106



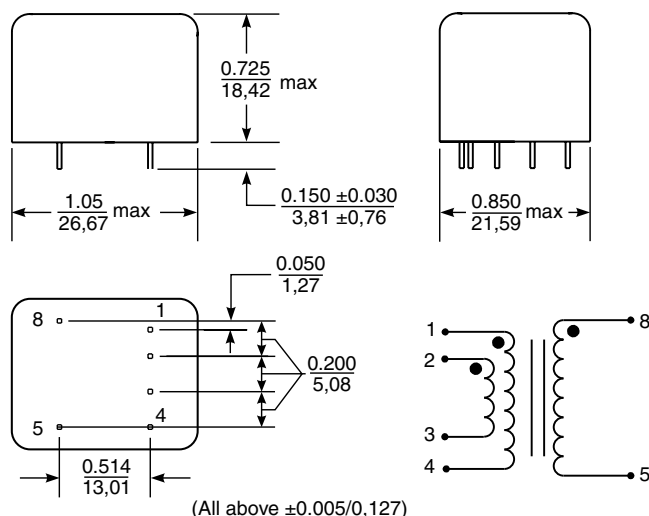
These Coilcraft current sense transformers are intended for use in measuring 50/60 Hz line currents from 0.5 to 20 Amperes RMS. Typical application as shown below yields a standard output of 0.1 Volt per Ampere. The sensitivity may be changed easily by simply adjusting the value of the sense resistor. These parts also can be used to measure 400 Hz line currents.

Coilcraft **Designer's Kit P203** contains samples of this part, the CS60-010 sensor, as well as several high frequency current sensors. To order, contact Coilcraft visit <http://order.coilcraft.com> to purchase on-line.

Specifications

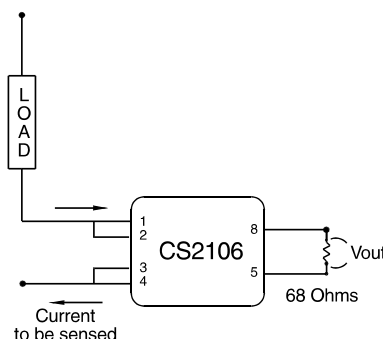
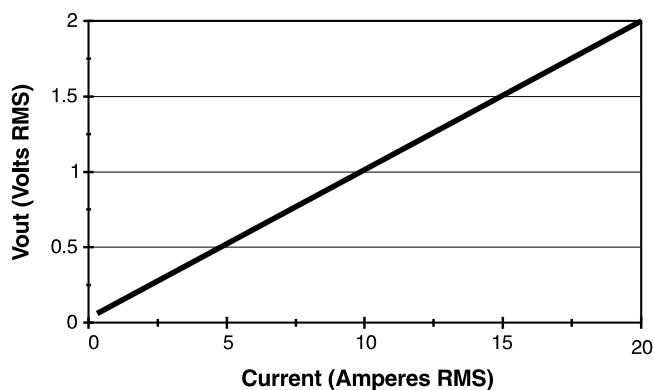
Part number	CS2106
DCR (1,2-3,4)	0.007 Ω max
DCR (8-5)	26 Ω max
Isolation	2500 Vrms between windings

- Operating temperature range -40°C to $+85^{\circ}\text{C}$.
- Electrical specifications at 25°C .



Terminals are 0.025/0,64 square.

Typical Response



Coilcraft®

Specifications subject to change without notice. Document 150 Revised 11/19/02

1102 Silver Lake Road Cary, Illinois 60013 Phone 847/639-6400 Fax 847/639-1469
E-mail info@coilcraft.com Web <http://www.coilcraft.com>