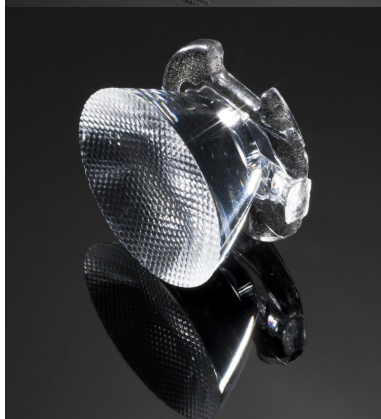


**Ordering number CA12062_EMILY-D**

Family	Emily	FWHM	14 degrees
Type	Assembly	Efficiency	90 %
LED	XM-L	cd/Im	10.100
Color	Clear	Gerber File	Available
Diameter	26 mm		
Height	14.9 mm		
Style	Round		
Optic Material	PMMA		
Holder Material	-		
Fastening	Pin, tape		
Status	Ready		

**Ordering number CA12064_EMILY-M**

Family	Emily	FWHM	18 degrees
Type	Assembly	Efficiency	93 %
LED	XM-L	cd/Im	-
Color	Clear	Gerber File	Available
Diameter	26 mm		
Height	15 mm		
Style	Round		
Optic Material	PMMA		
Holder Material	-		
Fastening	Pin, tape		
Status	Ready		

**Ordering number CA12070_EMILY-M2**

Family	Emily	FWHM	28 degrees
Type	Assembly	Efficiency	92 %
LED	XM-L	cd/Im	-
Color	Clear	Gerber File	Available
Diameter	26 mm		
Height	15 mm		
Style	Round		
Optic Material	PMMA		
Holder Material	-		
Fastening	Pin, tape		
Status	Ready		

**Ordering number CA12066_EMILY-O**

Family	Emily	FWHM	47+13 degrees
Type	Assembly	Efficiency	90 %
LED	XM-L	cd/Im	-
Color	Clear	Gerber File	Available
Diameter	26 mm		
Height	15 mm		
Style	Round		
Optic Material	PMMA		
Holder Material	-		
Fastening	Pin, tape		
Status	Ready		



Ordering number CA12068_EMILY-O-90

Family	Emily	FWHM	47+13 degrees
Type	Assembly	Efficiency	90 %
LED	XM-L	cd/lm	-
Color	Clear	Gerber File	Available
Diameter	26 mm		
Height	15 mm		
Style	Round		
Optic Material	PMMA		
Holder Material	-		
Fastening	Pin, tape		
Status	Ready		

NOTE: The typical divergence will be changed by different color, chip size and chip position tolerance. The typical total divergence is the full angle measured where the luminous intensity is half of the peak value.



PRODUCT DATASHEET

Emily series

last update 14/11/2012

GENERAL INFORMATION

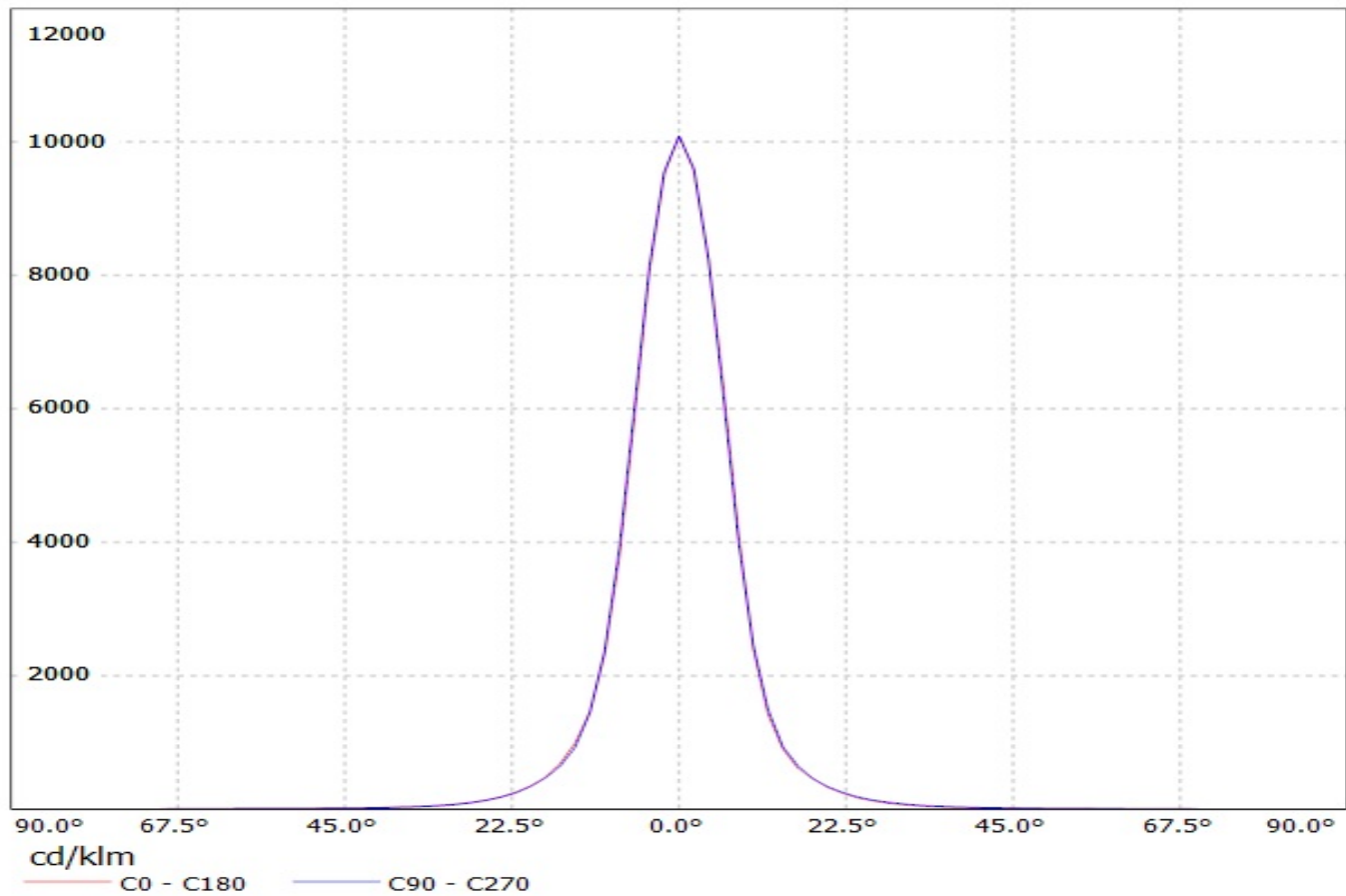
- Product series especially designed & optimized for XM-L series of LEDs.
- Special care taken to make light distribution as uniform as possible.
- Lens material optical grade PMMA with high UV and temperature resistance. Allows use of high current and temperature conditions.

Please find more information about used material from below:

http://ledil.fi/sites/default/files/Documents/Technical/Material/PMMA%20N%20UL94_Yellow%20Card.pdf

<http://ledil.fi/sites/default/files/Documents/Technical/Material/PMMA%20N%20PLEXIGLAS-Datasheet.pdf>

Luminaire: Ledil Oy CA12062_EMILY-D (Cree XM-L 92lm @ 250mA) Efficiency=90%
Lamps: 1 x Cree XM-L 92lm @ 250mA



Luminaire: Ledil Oy CA12062_EMILY-D (Cree XM-L 92lm @ 250mA) Efficiency=90%
Lamps: 1 x Cree XM-L 92lm @ 250mA

