



GAUSS	
OPERATE MAX	495
RELEASE MIN	200
DIFF MIN	35

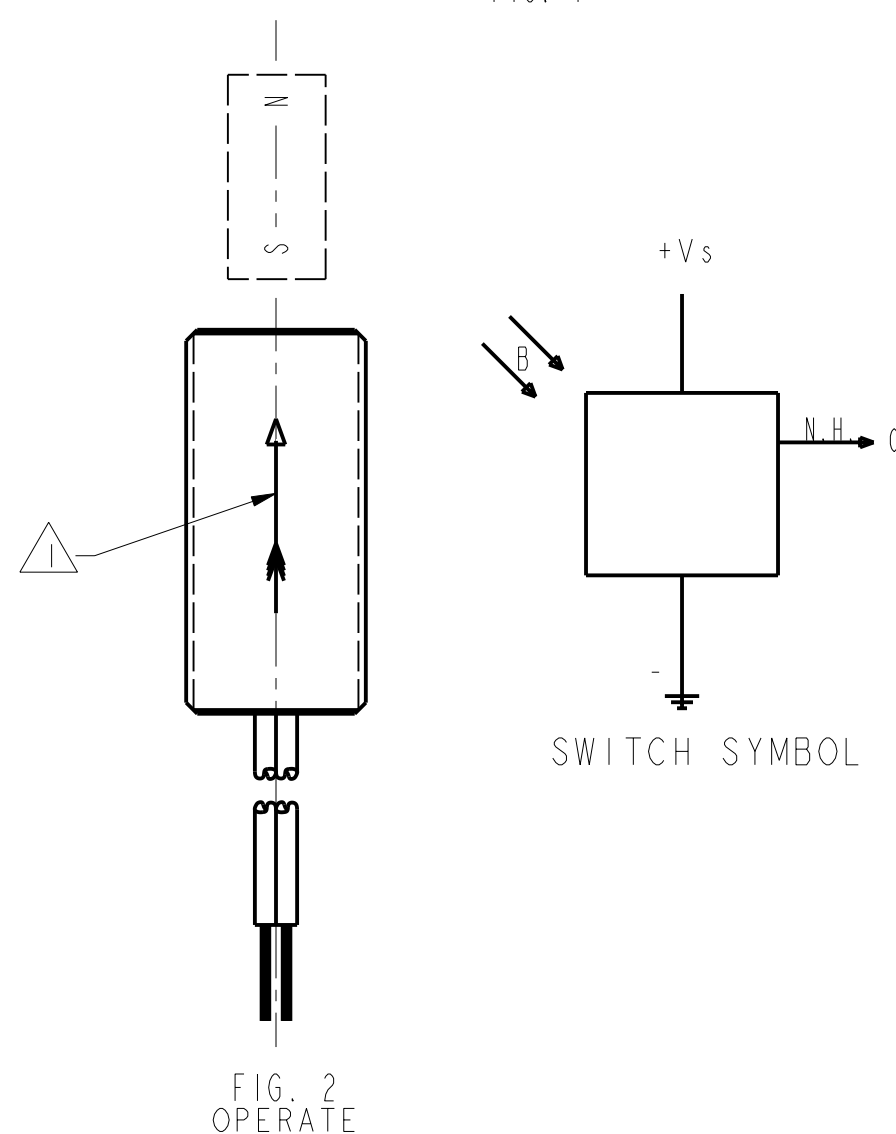
SUPPLY VOLTAGE (V _S)	-1.0 VDC TO +25.0 VDC
VOLTAGE EXTERNALLY APPLIED TO OUTPUT	+25 VOLTS DC MAX WITH SWITCH IN "OFF" CONDITION ONLY -0.5 VOLTS MAX WITH SWITCH IN "OFF" OR "ON" CONDITION
OUTPUT CURRENT	40 mA (SINK PER OUTPUT)
TEMPERATURE OPERATE AND STORAGE	-40°C TO 100°C
MAGNETIC FLUX	NO LIMIT, THE CIRCUIT CANNOT BE DAMAGED BY MAGNETIC OVERDRIVE

	MIN	TYP	MAX	REMARKS
SUPPLY CURRENT $\triangle 7$			10.0 mA	ON CONDITION
OUTPUT VOLTAGE (OPERATED)			0.4 V	SINKING 20 mA PER OUTPUT
OUTPUT LEAKAGE CURRENT (RELEASED)			20 μ A	LEAKAGE INTO SWITCH OUTPUT
OUTPUT SWITCHING TIME (SINKING 20 mA)				
RISE TIME $\triangle 4$			1.5 μ SEC	10% TO 90%
FAIL TIME			0.5 μ SEC	90% TO 10%

Wiring diagram for the Hall sensor and trigger circuit:

- HALL SENSOR** is connected to the **TRIGGER CIRCUIT AND AMPLIFIER**.
- The **TRIGGER CIRCUIT AND AMPLIFIER** has three output wires:
 - V_s (+) RED WIRE**
 - OUTPUT (O) NORMALLY HIGH GREEN WIRE**
 - GROUND (-) BLACK WIRE**

FIG. 1



1	FLUX ENTERING THE SOUTH POLE OF THE MAGNET WILL OPERATE THE SENSOR WHEN MAGNET IS POSITIONED AS SHOWN IN FIGURE 2. THIS ASSUMES THE CONVENTION THAT THE DIRECTION OF THE EXTERNAL FLUX OF A MAGNET IS FROM THE NORTH TO THE SOUTH POLE OF THE MAGNET
2	LEADWIRES (INDIVIDUAL WIRES) ARE 24 GAGE STRANDED WITH IRRADIATED POLYETHYLENE INSULATION
3	DATE CODE LOCATED IN THIS AREA
4	FROM -40°C TO 100°C AND 4.5 TO 24 VOLTS
5	CATALOG LISTING LOCATED IN THIS AREA
6	SENSITIVE AREA IS LOCATED .050 BEHIND THE SENSING FACE
7	AT 24 ± 2°C
8	V _s IS THE UNREGULATED SUPPLY VOLTAGE



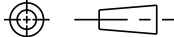
THIS DRAWING COVERS A PROPRIETARY ITEM AND IS THE PROPERTY OF MICRO SWITCH. A DIVISION OF HONEYWELL. THIS DRAWING IS NOT TO BE COPIED OR USED WITHOUT THE APPROVAL OF MICRO SWITCH.

MICRO SWITCH
a Honeywell Division

MAGNETICALLY OPERATED CYLINDRICAL HALL SWITCH

CATALOG LISTING

103SR13A-6

THIRD ANGLE PROJECTION		
		
SCALE	3 : 1	
DO NOT SCALE PRINT		
UNLESS OTHERWISE SPECIFIED TOLERANCES ARE		
ONE PLACE	(.0)	± .030
TWO PLACES	(.00)	± .015
THREE PLACES	(.000)	± .005
ANGLES		±
WEIGHT		