

4

3

2

1

THIS DRAWING IS UNPUBLISHED.

RELEASED FOR PUBLICATION

© COPYRIGHT

ALL RIGHTS RESERVED.

LOC

DIST


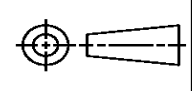
REVISIONS

P	LTR	DESCRIPTION	DATE	DWN	APVD
	A2	ECR-14-003329	11MAR2014	GK	HMR

REPLACED BY OCEAN STYLE APPLICATOR PART
NUMBER 2266193-1

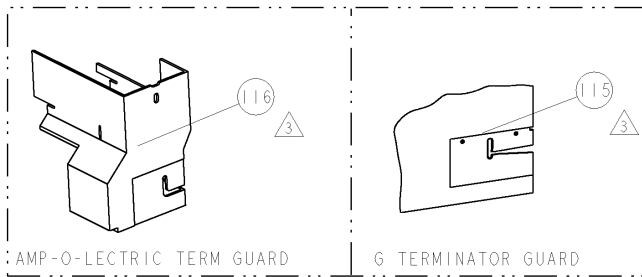
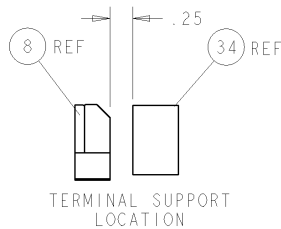
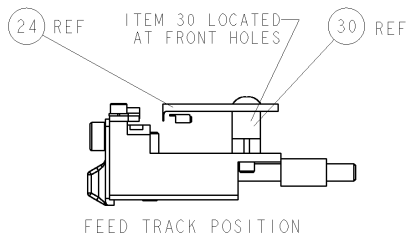
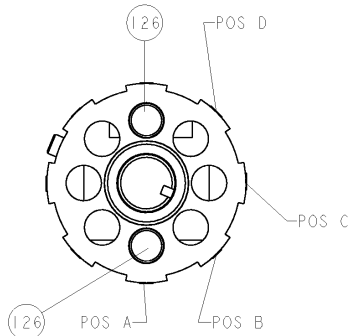
FOR REPLACEMENT PARTS FOR APPLICATOR 1852363
REFER TO ADDITIONAL PAGE(S). SPARE PARTS KIT (IF LISTED)
WILL REMAIN AVAILABLE.

THE REPLACEMENT OCEAN STYLE APPLICATOR HAS THE
SAME TERMINATOR/PRESS INTERFACE AS APPLICATOR
1852363

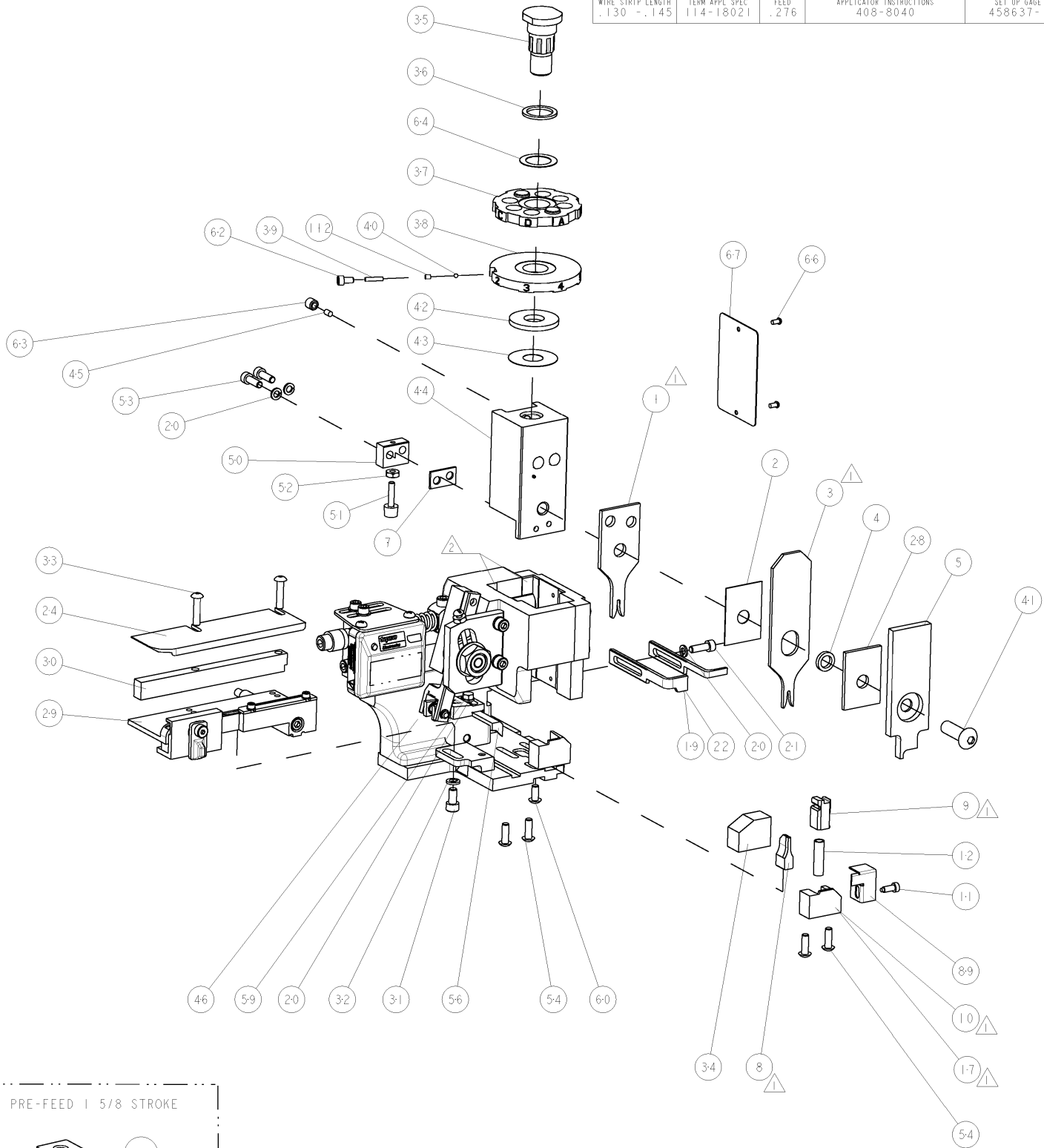
THIS DRAWING IS A CONTROLLED DOCUMENT.		DWN GOPALAKRISHNA HV		 TE Connectivity	
DIMENSIONS:		CHK RAGHAVENDRA			
		TOLERANCES UNLESS OTHERWISE SPECIFIED:		APVD RAGHAVENDRA	
		0 PLC ±		NAME SIDE FEED HDM APPLICATOR	
		1 PLC ±		PRODUCT SPEC	
2 PLC ±		APPLICATION SPEC		SIZE	
3 PLC ±		WEIGHT		CAGE CODE	
4 PLC ±		CUSTOMER DRAWING		DRAWING NO	
ANGLES ±		SCALE		RESTRICTED TO	
FINISH		SHEET 1 OF 2		REV A2	
MATERIAL		A3		C- 1852363	

8			7					
THIS DRAWING IS UNPUBLISHED.			RELEASED FOR PUBLICATION			20		
(C) COPYRIGHT 20			BY TYCO ELECTRONICS CORPORATION. ALL RIGHTS RESERVED.					
PART NUMBER	REV	FIRST USED	POWER UNIT	FEED TYPE		DESCRIPTION		
1852363-1	1	122500-1	LEADMAKER	POST FEED		CUTS CARRIER		
1852363-2	1	565435-5	BENCH MODEL K	PRE FEED		CUTS CARRIER		
1852363-3	1	354500-1	BENCH MODEL G	PRE FEED		CUTS CARRIER		
1852363-6	1	122500-1	LEADMAKER	POST FEED		CONTINUOUS CARRIER		
7-1852363-7	1	-	-	-		SPARE PARTS		

- △ RECOMMENDED SPARE PARTS
△ GREASE LIGHTLY
△ GUARD MUST BE IN PLACE WHEN OPERATING APPLICATOR IN A BENCH MACHINE



TERMINAL NAME: MICRO QUADLOCK SYSTEM					
SOCKET	PIN	AMP TERMINAL - AMP CRIMP SPECS			
1719532	-				
-	-	PAD LTR	CRIMP HEIGHT	WIRE SIZE	
-	-	A	.042±.002[1.07±0.05mm]	18AWG	
-	-	B	-	-	
-	-	C	-	-	
-	-	D	-	-	
-	-	CRIMP	SIZE	TYPE	RANGE
SEAL PN.	-	WIRE	.062 [1.57mm]	F	18 AWG
-	-	INSUL	.080 [2.03mm]	O	1.7 - 1.9mm
WIRE STRIP LENGTH	1.30 - 1.45	TERM APPL SPEC	114-18021	FEED	2.76
		APPLICATOR INSTRUCTIONS		SET UP GAGE	
		408-8040		458637-1	



LOC		DIST		REVISIONS						
A	66	P	CTR	DESCRIPTION			DATE	DWR	APV	
		A1		ECR-07-006254			18MAR2007	MY	GB	

-	2	2	2	2	-	8-354778-5	PIN, WIRE DISC, .2920	126
-	-	-	REF	-	..	455749-1	GUARD WINDOW	116
-	-	REF	-	-	..	679532-1	INSERT, GUARD	115
-	1	1	1	1	-	690603-1	SPRING ASSIST AMP-O-MATOR APPLICATOR	112
-	1	1	1	1	-	1-21002-7	SCR, BTN SKT HD CAP 6-32 X .375	91
-	1	1	1	1	-	318563-1	GUARD, FRONT CHIP	89
-	1	1	1	1	-	4088040	SF APPL INST 408-8040	72
-	1	1	1	1	-	217238-1	GENERAL INSTRUCTION PKG	71
-	1	1	1	1	-	461264-1	PLATE, IDENTIFICATION	67
-	2	2	2	2	-	21017-2	SCREW, DRIVE	66
-	1	1	1	1	-	986950-1	WASHER, FLAT PRECISION	64
-	1	1	1	1	-	21009-2	SCR, SET, SELF LOCKING 1/4-20 X .250	63
-	1	1	1	1	-	23030-1	SCR, SKT HD CAP 6-32 X .25	62
-	1	1	1	1	-	22733-8	SCR, BHSC, SELF-LOCKING, 8-32 X .375	60
-	1	1	1	1	-	2-22603-0	SCR, HEX HD CAP 8-32 X .312	59
-	1	1	1	1	-	690542-2	PAWL, FEED (MACH.)	56
-	4	4	4	4	-	2-21002-2	SCR, BTN SKT HD CAP 8-32 X .500	54
-	2	2	2	2	-	2-21000-7	SCR, SKT HD CAP 8-32 X .500	53
-	1	1	1	1	-	21018-5	NUT, HEX, REG 6-32	52
-	1	1	1	1	-	811242-2	BUMPER, HOLD DOWN	51
-	1	1	1	1	-	690753-1	SPACER, TONKER	50
-	-	1	-	-	..	690602-6	CAM, PRE FEED, 1 5/8	49
-	-	-	1	-	..	690602-5	CAM, PRE FEED, 1 1/8	48
-	1	-	-	1	-	690501-4	CAM, POST FEED, 1 5/8	47
-	1	1	1	1	-	459456-1	APPL. BASIC SUB ASSY (SIDE WISE MOCA)	46
-	1	1	1	1	-	690191-1	PLUG, NYLON	45
-	1	1	1	1	-	455673-1	RAM, SIDE FEED	44
-	1	1	1	1	-	690125-1	SHIM SUB-ASSY	43
-	1	1	1	1	-	690124-1	WASHER, RAM (.115)	42
-	1	1	1	1	-	7-21002-9	SCR, BTN SKT HD CAP 5/16-24 X 1.00	41
-	1	1	1	1	-	23241-6	BALL, STEEL	40
-	1	1	1	1	-	690170-1	SPRING, COMPRESSION	39
-	1	1	1	1	-	690142-1	DISC, INSULATION	38
-	1	1	1	1	-	354777-1	WIRE DISC, ASSEMBLY	37
-	1	1	1	1	-	22480-5	SPRING, COMPRESSION	36
-	1	1	1	1	-	690212-1	POST, RAM	35
-	1	1	1	1	-	690786-3	TERMINAL SUPPORT	34
-	2	2	2	2	-	2-21002-4	SCR, BTN SKT HD CAP 8-32 X .750	33
-	1	1	1	1	-	21024-5	WASHER, SPRG LOCK, REG NO 10	32
-	1	1	1	1	-	3-21000-4	SCR, SKT HD CAP 10-32 X .375	31
-	1	1	1	1	-	1-1320908-7	SPACER, STRIP GUIDE	30
-	1	1	1	1	-	1633091-1	ASSEMBLY, STRIP GUIDE	29
-	1	1	1	1	-	2-455888-2	SPACER, CRIMPER	28
-	1	1	1	1	-	1320928-1	PLATE, STRIP GUIDE	24
-	1	-	-	1	-	690472-2	STRIPPER	22
-	1	1	1	1	-	2-21000-7	SCR, SKT HD CAP 8-32 X .500	21
-	4	4	4	4	-	21024-4	WASHER, SPRG LOCK, REG NO 8	20
-	-	1	1	-	-	691353-1	STRIPPER	19
-	1	-	-	-	-	679625-1	SHEAR HOLDER, FRONT (NO CUT)	17
-	1	1	1	1	-	3-22280-3	SPRING, COMPRESSION	12
-	1	1	1	1	-	690461-1	STOP, SHEAR	11
-	-	1	1	1	-	690459-1	SHEAR HOLDER, FRONT	10
-	1	1	1	1	-	454276-1	FLOATING SHEAR, FRONT	9
-	1	1	1	1	-	2-1633107-9	ANVIL, COMBINATION .062	8
-	1	1	1	1	-	3-240641-4	SPACER	7
-	1	1	1	1	-	1-455889-4	DEPRESSOR, SHEAR	5
-	1	1	1	1	-	1-238011-0	BLOCK, CRIMPER SPACER	4
-	1	1	1	1	-	6-456135-5	CRIMPER, INSULATION O PREMIUM	3
-	1	1	1	1	-	455888-4	SPACER, CRIMPER	2
-	1	1	1	1	-	2-456403-6	CRIMPER, WIRE PREMIUM	1

DIMENSIONS: INCHES		TOLERANCES, UNLESS OTHERWISE SPECIFIED:		APPROVED: M. CLIFFORD		DATE: 13NOV2006		NAME: tyco		Harrisburg, PA 17105-3608	
0 PLC ±.001		1 PLC ±.001		2 PLC ±.001		3 PLC ±.001		4 PLC ±.001		ANGLES	
MATERIAL: -		FINISH: -		WEIGHT: -		SCALE: 3:5		SHEET 1 OF 1		REV: A1	
CUSTOMER DRAWING		SCALE: 3:5		SHEET 1 OF 1		REV: A1		CUSTOMER VIEWABLE ASSEMBLY			