

THE INFORMATION CONTAINED IN THIS DRAWING IS THE SOLE PROPERTY OF
BUD INDUSTRIES INC. ANY REPRODUCTION IN PART OR WHOLE WITHOUT
THE WRITTEN PERMISSION OF BUD INDUSTRIES INC. IS PROHIBITED.

MATERIAL - ALUMINUM ALLOY #ADC-12

FINISH - NATURAL (CONTACT BUD FACTORY FOR
ALTERNATE FINISHES)

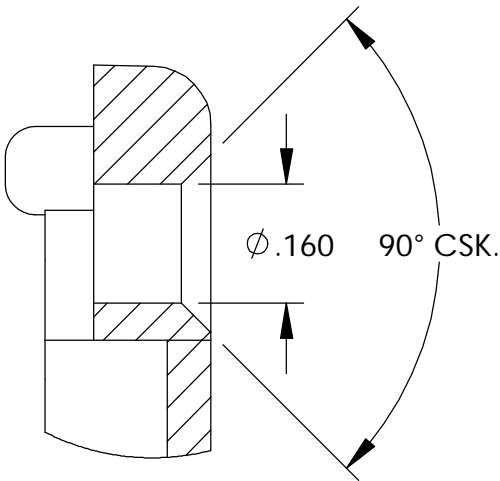
GASKET - RATED IP65 NEOPRENE, SELF-ADHESIVE,
3mm THICK, COLOR BLACK

SCREWS - STAINLESS STEEL, M3.5 x 12mm LG.,
CSK. HEAD, SELF-THREADING

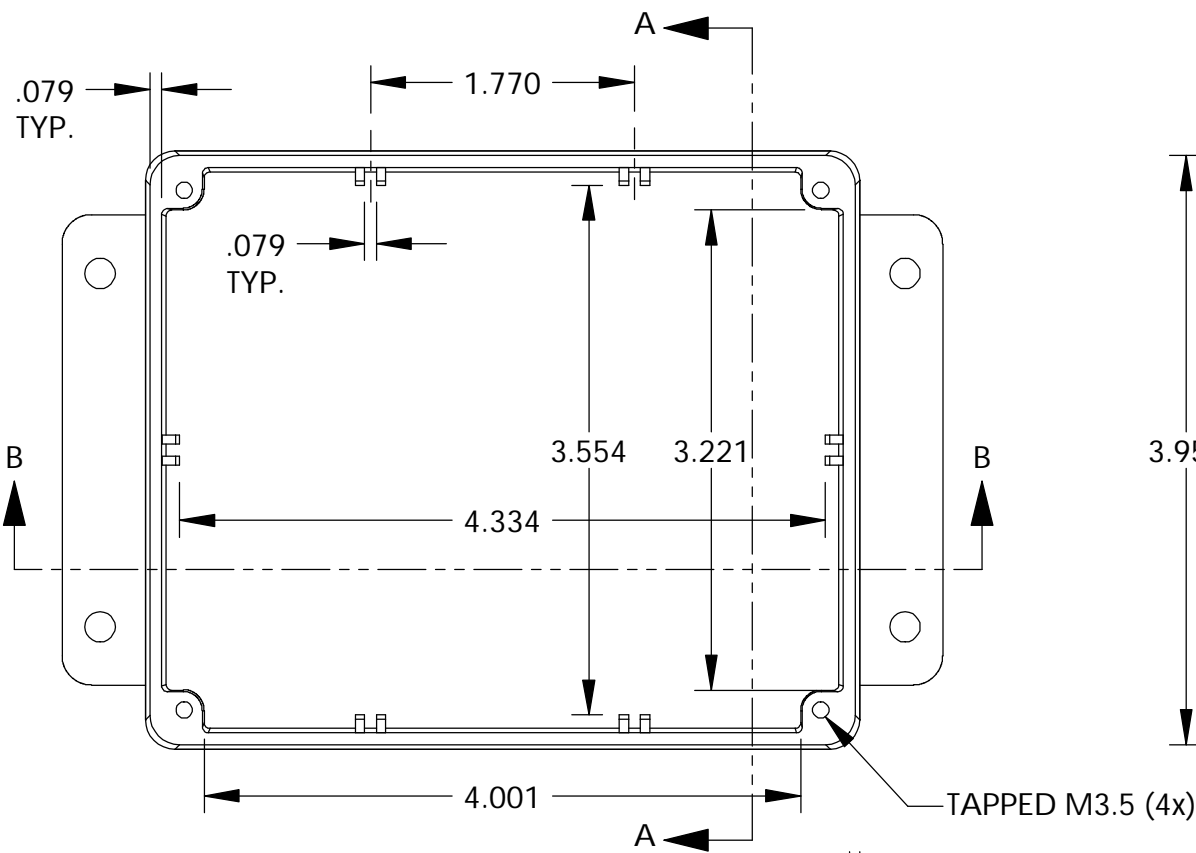
ALL HOLE DIAMETERS HAVE $\pm .005$ TOLERANCE.

ALL OTHER DIMENSIONS HAVE $\pm .015$ TOLERANCE.

ENCLOSURES ARE SHIPPED UNASSEMBLED WITH
ALL ITEMS SHOWN.

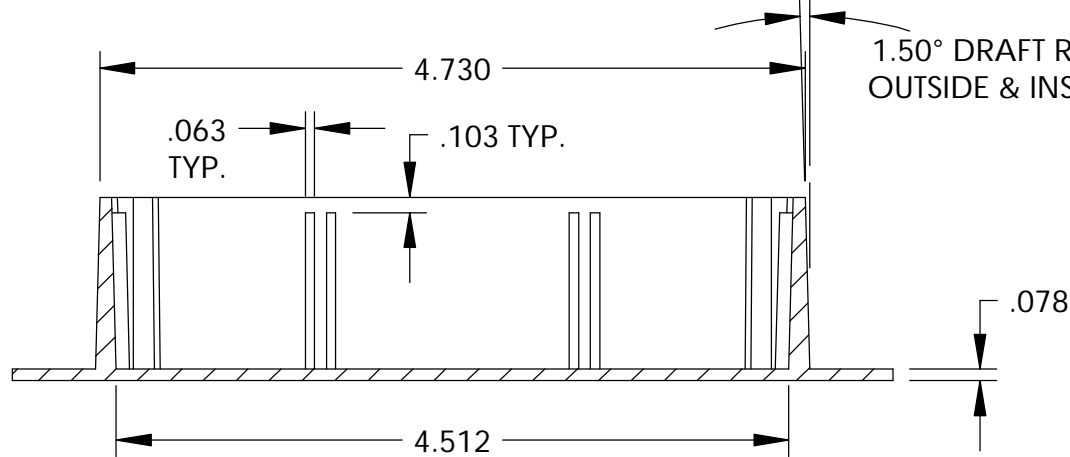


DETAIL D
SCALE 4 : 1

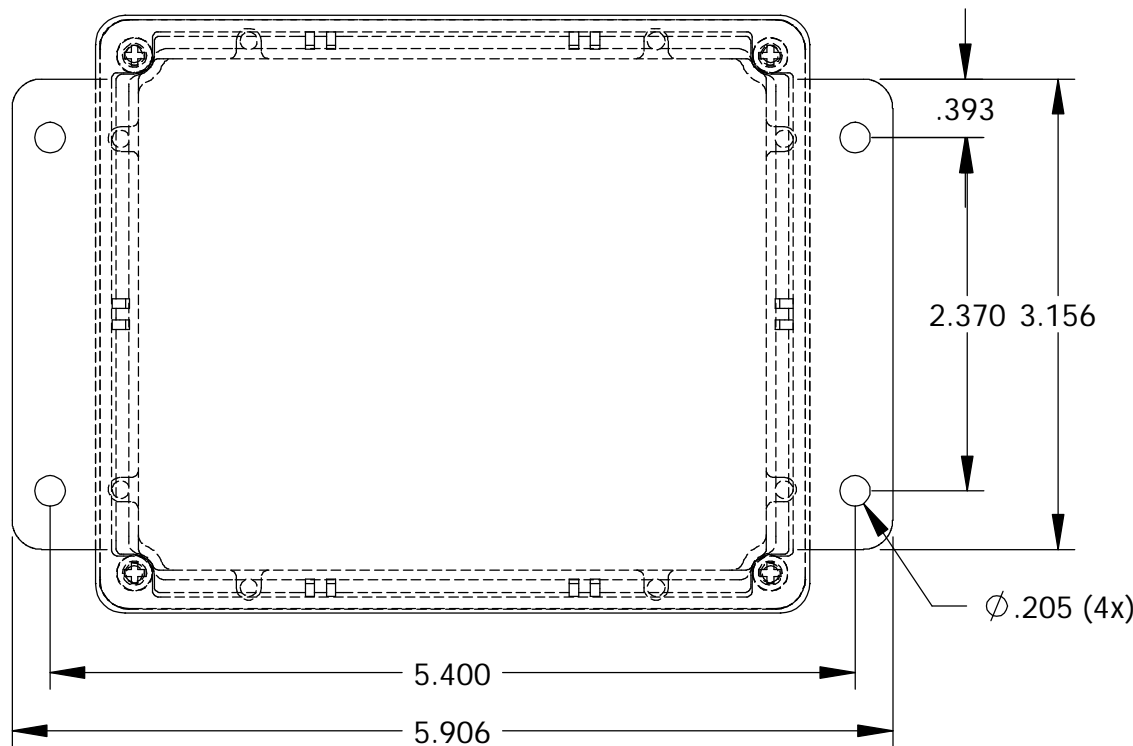


SECTION A-A

BODY



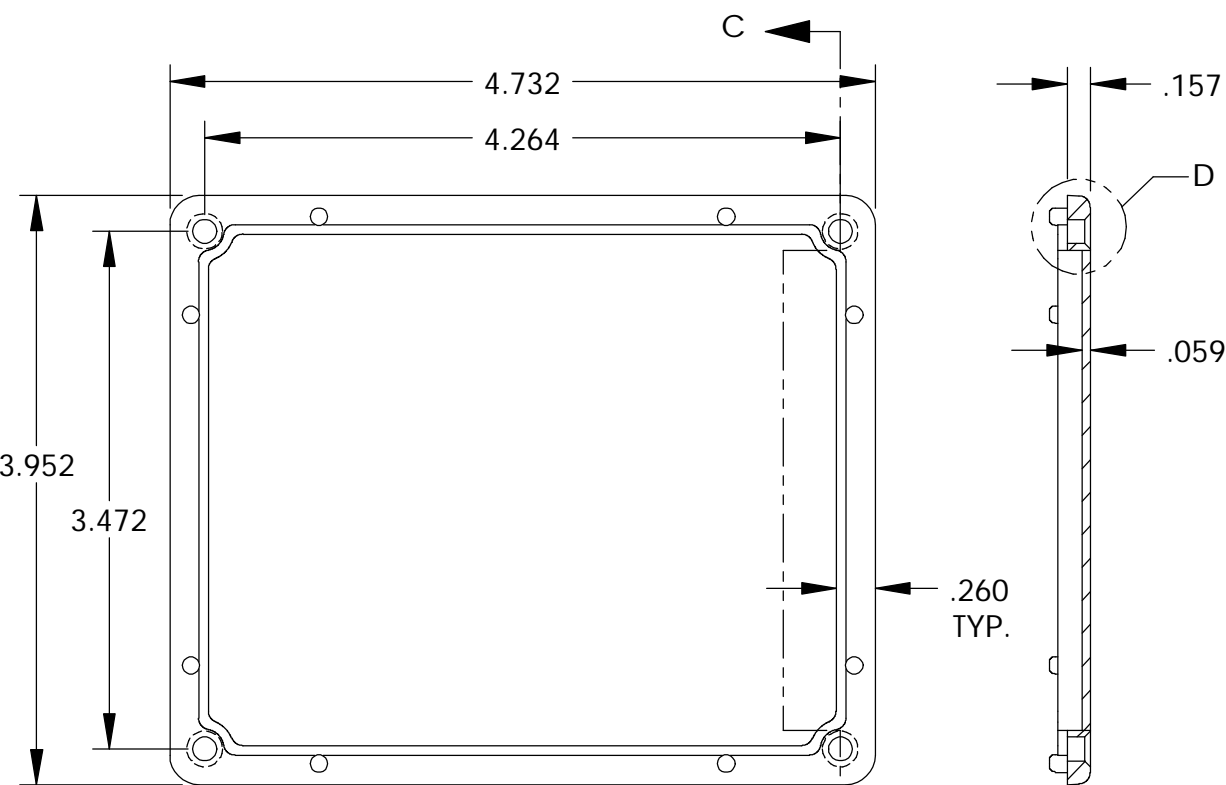
SECTION B-B



$\phi .205$ (4x)

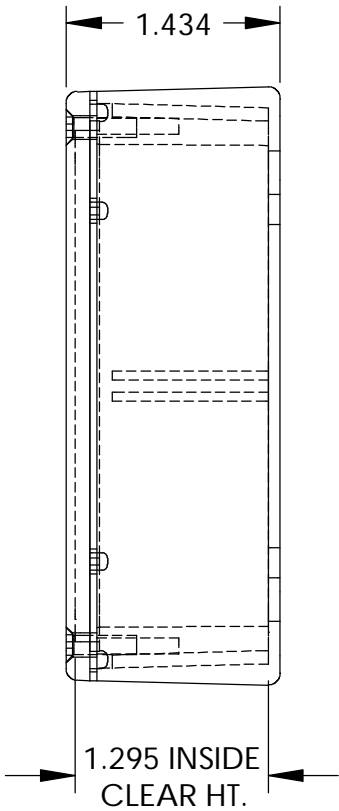
1.50° DRAFT REF.
OUTSIDE & INSIDE

TAPPED M3.5 (4x)

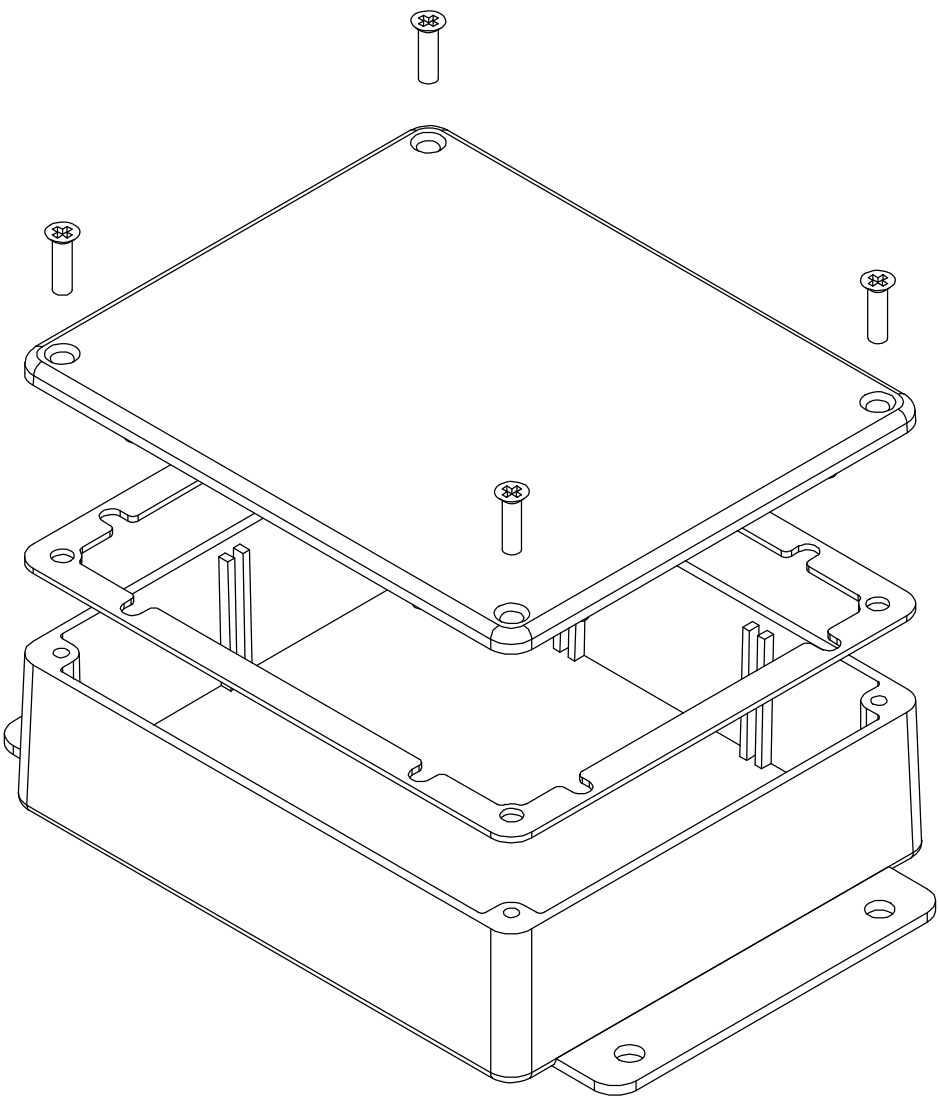


SECTION C-C

COVER



1.295 INSIDE
CLEAR HT.



PARTS LIST

+/- .005 BETWEEN HOLE CENTERS +/- .015 FROM SHEARED EDGE +/- .032 FROM A BENT SURFACE +/- .062 BETWEEN ASSEMBLED SURFACES UNLESS OTHERWISE SPECIFIED		CAD GENERATED DRAWING. DO NOT MANUALLY UPDATE	
APPROVALS		DATE	
DRAWN		4-3-06	
CHECKED			
MATERIAL			
FINISH			

AS NOTED
AS NOTED

BUD INDUSTRIES INC.

DIE CAST ALUMINUM
ENCLOSURE

DWG. NO. CN-6706

SCALE

CAD FILE:

SHEET 1 OF 1

QTY.	USED ON	DO NOT SCALE DRAWING	APPROVED	REV.

Mouser Electronics

Authorized Distributor

Click to View Pricing, Inventory, Delivery & Lifecycle Information:

[Bud Industries:](#)

[CN-6706](#)