

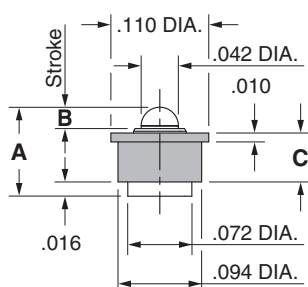
SPRING-LOADED CONNECTORS

SERIES 807 • DISCRETE INSULATED SPRING-LOADED PINS • SURFACE MOUNT

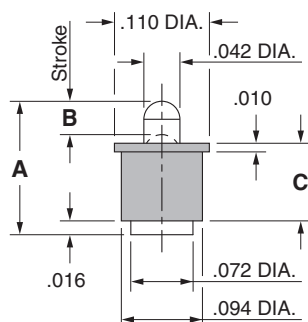


- Discrete insulated spring-loaded pins; available in seven heights from .100" to .236", with working travel from .012" to .0275"
- Precision-machined piston / base and gold-plated components assure up to 1,000,000 cycle life durability
- Low resistance contacts are rated at 2 amps continuous, 3 amps peak
- High temperature thermoplastic insulators are suitable for SMT soldering processes
- 807 series, contact styles 0 through 6, are available in bulk or on 16mm wide carrier tape for automated pick and place assembly. Tape and Reel packaging per EIA-481. See below for ordering information

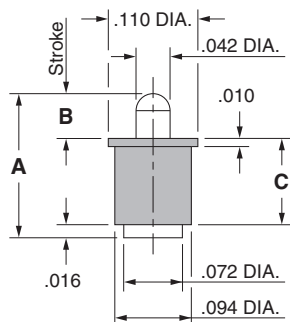
Series 807 (Contact Style 0)



Series 807 (Contact Style 1 & 2)



Series 807 (Contact Style 3-6)



ORDERING INFORMATION

Series 807 (Bulk Packaged)

807-22-001-30-00X101

Specify contact style 0-6

Series 807 (Tape & Reel Packaged)

807-22-001-30-00X191

Specify contact style 0-6

| Contact Style | Initial Height (A) | Working Travel | Full Stroke Range (B) | Sleeve Height (C) | Quantity per Reel |
|---------------|--------------------|----------------|-----------------------|-------------------|-------------------|
| 0 | .100 | .012 | .020-.024 | .055 | 2,620 |
| 1 | .137 | .0195 | .030-.039 | .082 | 1,750 |
| 2 | .155 | .0195 | .035-.039 | .090 | 1,750 |
| 3 | .177 | .0275 | .045-.055 | .106 | 1,055 |
| 4 | .197 | .0275 | .045-.055 | .126 | 780 |
| 5 | .217 | .0275 | .045-.055 | .146 | 780 |
| 6 | .236 | .0275 | .045-.055 | .165 | 780 |

Technical Specifications

Materials:

Contact piston & base: Machined copper alloy plated 20μ" gold over 100μ" nickel
 Spring (Contact style 0): Stainless Steel-plated 10μ" gold
 Spring (Contact style 1-6): Beryllium copper-plated 10μ" gold
 Insulator: High temperature thermoplastic, rated UL94 V-0

Mechanical:

Spring force @ initial height (A) (Contact style 0-6): 25 grams
 Spring force @ mid stroke (B/2) (Contact style 0): 70 grams
 Spring force @ mid stroke (B/2) (Contact style 1-6): 60 grams
 Durability: Up to 1,000,000 cycles

Electrical:

Current rating: 2A (continuous), 3A (peak) per contact
 Contact resistance: 20mΩ max.
 Insulation resistance: 10,000MΩ min.
 Dielectric strength: 700Vrms min.

RoHS-2
2011/65/EU

