



PRODUCT NUMBER  
20020008-XXXXXXLF

20020008-

PITCH

C: 3.50 mm  
D: 3.81 mm  
G: 5.00 mm  
H: 5.08 mm

POLES

02: 2 POLES  
03: 3 POLES  
04: 4 POLES

24: 24 POLES

HOUSING CODE

CODE	COLOR	AVAILABILITY
1	GREEN(RAL 6018/T)	STANDARD
2	BLACK	ON REQUEST ONLY
3	GREY(RAL 7004/P)	ON REQUEST ONLY
4	BLUE(RAL 5015/A)	ON REQUEST ONLY
5	YELLOW	ON REQUEST ONLY



LF: DENOTED RoHS COMPATIBLE

1 : STANDARD PRODUCT  
W/ BOX PACKING

PRINTING CODE	POSITION	MARKING
0	NONE	NONE
3	SIDE	....4,3,2,1
5	SIDE	....C,B,A,-,+

SCREW CODE

CODE	SCREW TYPE	AVAILABILITY
A	-/+	ON REQUEST ONLY
B	-	STANDARD

PROPERTY TABLE						
FCI SERIES NAME		02-350	02-381	02-500	02-508	
PITCH (mm)		3.50	3.81	5.00	5.08	
VOLTAGE RATING (VAC)		300	300	300	300	
CURRENT RATING (A)	cULus	8	8	12	12	
	VDE	10	10	NA	NA	
APPLICABLE WIRE RANGE (AWG)	1-WIRE	16~28	16~28	12~24	12~24	
	2-WIRE	20	20	18	18	
WIRE CROSS SECTION (mm <sup>2</sup> )	SOLID	1-WIRE	1.5	1.5	2.5	2.5
		2-WIRE	0.5	0.5	1.0	1.0
	STRANDED	1-WIRE	1.5	1.5	2.5	2.5
		2-WIRE	0.75	0.75	1.5	1.5
OPENING CONTACT HOUSING(mm <sup>2</sup> )		2.8x1.7	2.8x1.7	2.6x3.2	2.6x3.2	
WIRE STRIP LENGTH(mm)		6~7	6~7	6~7	6~7	
TORQUE +/-10% (N-m/Lb-in)		0.19/1.7	0.19/1.7	0.4/3.5	0.4/3.5	
SCREW		M2x0.4	M2x0.4	M3x0.5	M3x0.5	
WITHSTANDING VOLTAGE (kV)	cULus	1.6	1.6	1.6	1.6	
	VDE	2.5	2.5	NA	NA	
OPERATING TEMP. (°C)		-40~+115	-40~+115	-40~+115	-40~+115	
POLES AVAILABLE		02~24	02~24	02~24	02~24	
SAFETY CERTIFICATE						

## NOTES:

## 1. MATERIALS

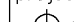
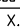

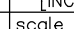
- 1-1 HOUSING: THERMALPLASTIC RESIN, UL 94V-0 RATED,  
1-2 SCREW: STEEL, ZINC PLATED.  
1-3 CLAMP: COPPER ALLOY, NICKEL PLATED.  
1-4 TERMINAL: COPPER ALLOY, TIN PLATED.

## 2. PRODUCT SPECIFICATION REFER TO FCI GS-12-625.

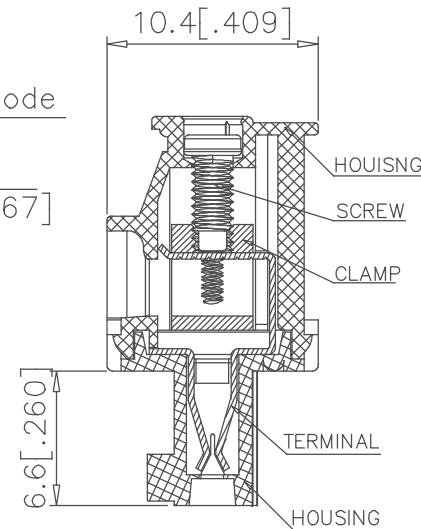
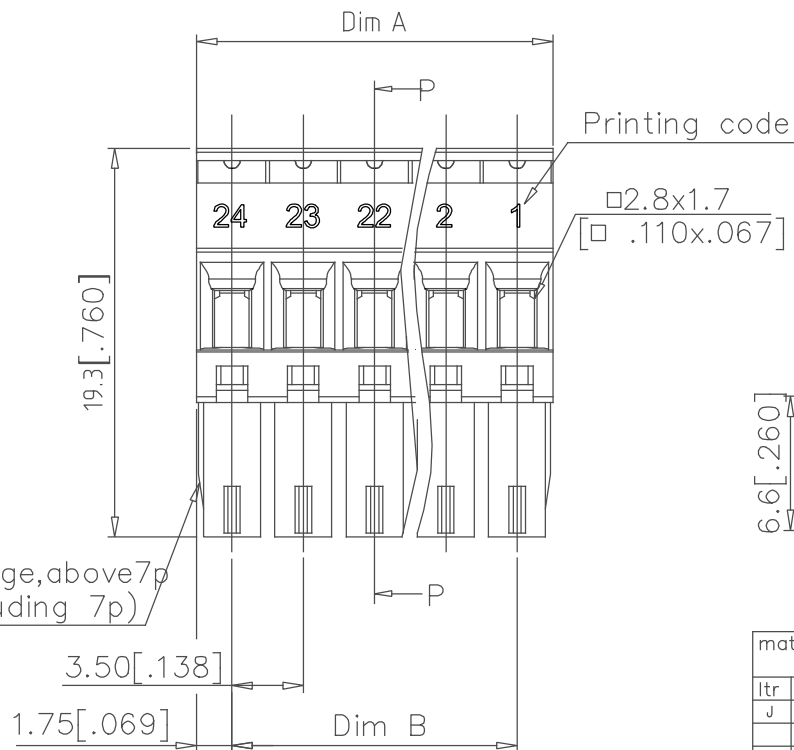
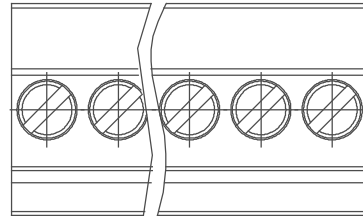
## 3. PRODUCT PACKING SPECIFICATION REFER TO FCI GS-14-1394.

## 4. FCI, SAFETY CERTIFICATE LOGO AND SERIES NAME TO BE SHOWN ON PRODUCT SURFACE.

## 5. THE PRODUCTS WHERE THE PART NUMBER END IN "LF" MEET THE EUROPEAN UNION DIRECTIVE AND OTHER COUNTRY REGULATIONS AS DESCRIBED IN GS-22-008.

mat'l. code				surface ASME Y14.5 ✓		tolerance ASME Y14.5		projection 		product family TERMINAL BLOCK			
ltr ecn no dr date				tolerances unless otherwise specified						title			
D T10-0042 WL 030310				angles 	X.±0.5[.020]		MM		TERMINAL BLOCK Pluggable plug, hook entry side				
E T10-0082 WL 080510					X.X±0.3[.012]								
F T10-0172 WL 102010					X'±1"		X.XX±0.1[.004]						
G T11-0013 WL 040811				dr BEER FU		062509				dwg no		sheet 1 of 5 size	
H T-004746 WL 072011				enrg BEER FU		062509				20020008		A4	
J T-012872 LS 091912				chr GARY HSIEH		062509				type		CUSTOMER Drawing	
appd JOSEPH HSIA				062509									
sheet index		revision sheet		J	J	J	J	J					
				1	2	3	4	5					

PRODUCT NUMBER	SERIES NAME	PITCH
20020008-CXXXXXXLF	02-350	3.50 mm



SECTION P-P

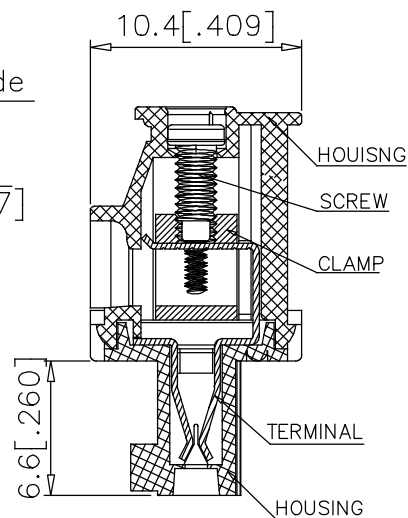
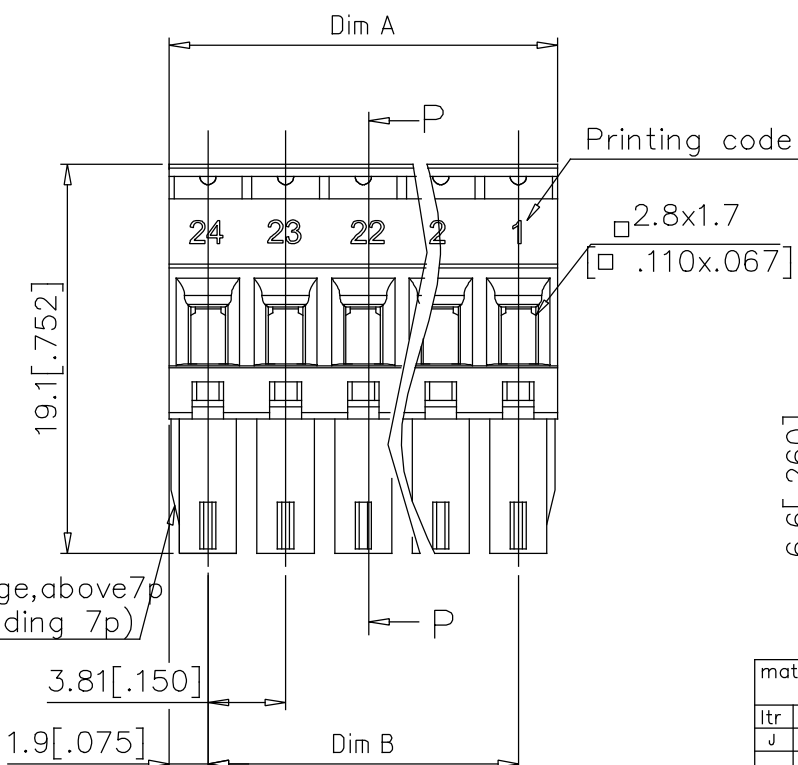
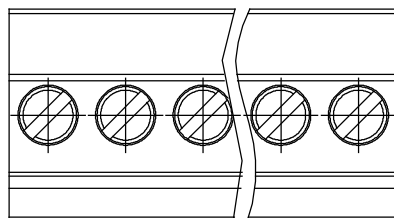
N= NUMBER OF POLES  
DIMENSION

Dim A	$N \times 3.5[.138]$
Bim B	$(N-1) \times 3.5[.138]$

Poles	Tolerance
2P-6P	$\pm 0.15[.006]$
7P-12P	$\pm 0.20[.008]$
13P-18P	$\pm 0.25[.010]$
19P-24P	$\pm 0.30[.012]$

[illegible]

PRODUCT NUMBER	SERIES NAME	PITCH
20020008-DXXXXXXLF	02-381	3.81 mm



SECTION P-P

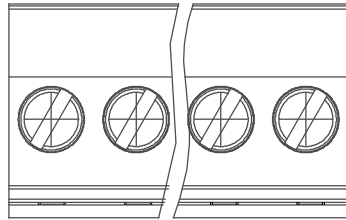
N= NUMBER OF POLES  
DIMENSION

Dim A	$N \times 3.81[.150]$
Dim B	$(N-1) \times 3.81[.150]$

Poles	Tolerance
2P-6P	$\pm 0.15[.006]$
7P-12P	$\pm 0.20[.008]$
13P-18P	$\pm 0.25[.010]$
19P-24P	$\pm 0.30[.012]$

mat'l. code	surface ASME Y14.5	tolerance ASME Y14.5	projection MM [INCH]	product family TERMINAL BLOCK
ltr	ecr no	dr	date	title
J				TERMINAL BLOCK PLUGABLE, PLUG, SIGNAL, ENTRY SIDE HOOK
				scale
				dwg no
				sheet 3 of 5
				size
				20020008
				A4
				type
				CUSTOMER Drawing
sheet index	revision sheet			

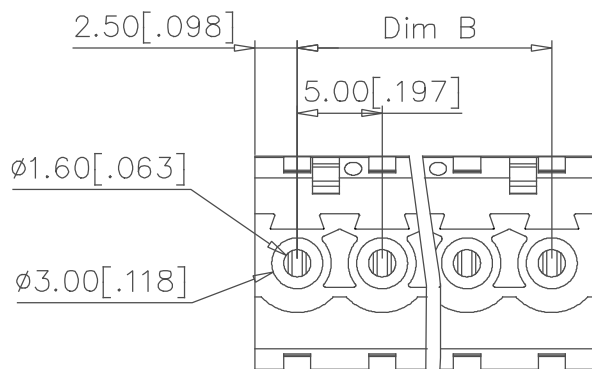
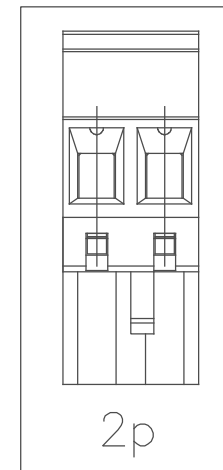
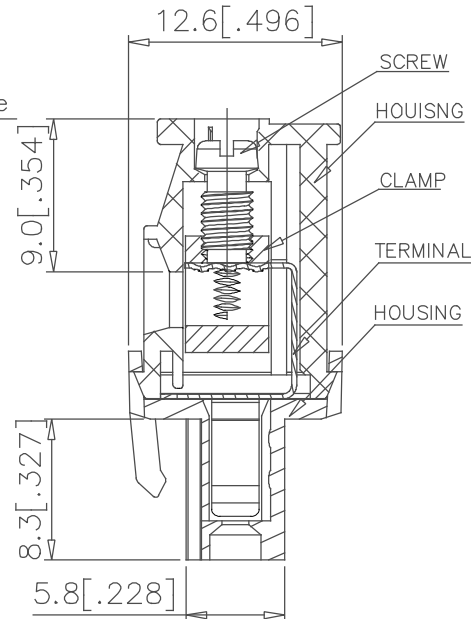
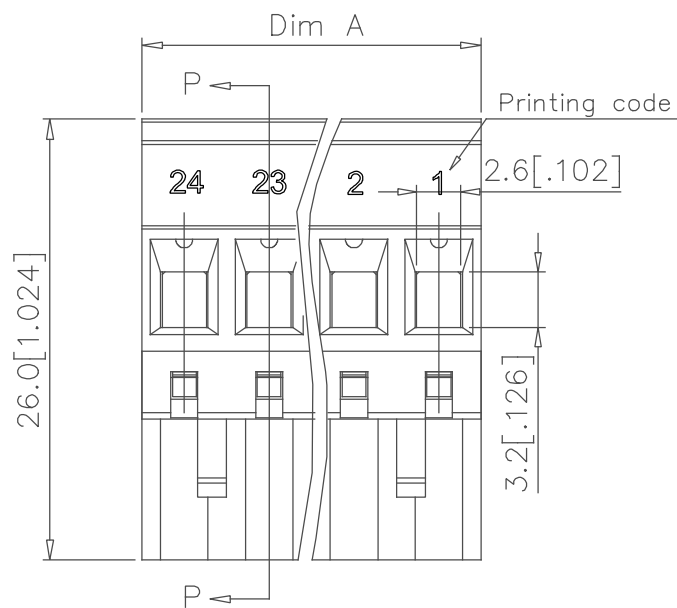
PRODUCT NUMBER	SERIES NAME	PITCH
20020008-GXXXXXL	02-500	5.00 mm



N= NUMBER OF POLES  
DIMENSION

Dim A	$N \times 5.0[.197]$
Dim B	$(N-1) \times 5.0[.197]$

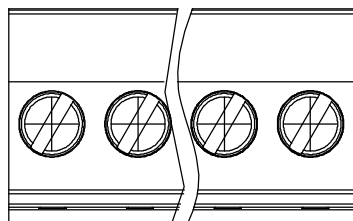
Poles	Tolerance
2P-6P	$\pm 0.15[.006]$
7P-12P	$\pm 0.25[.010]$
13P-18P	$\pm 0.30[.012]$
19P-24P	$\pm 0.40[.016]$



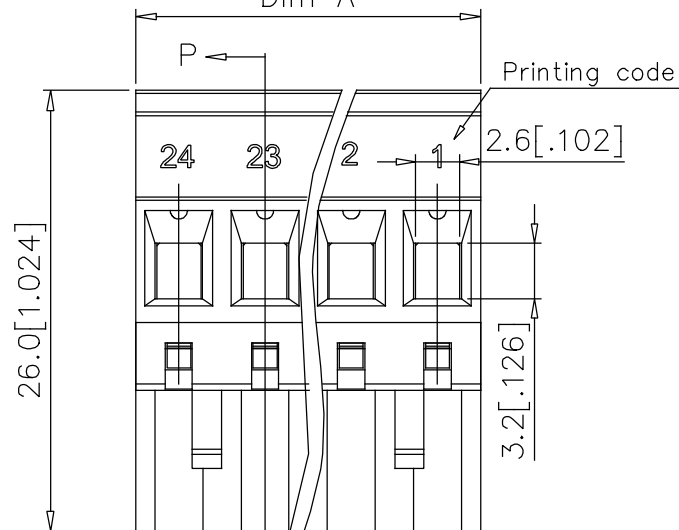
SECTION P-P

mat'l. code		surface	tolerance	projection	product family
		ASME Y14.5	ASME Y14.5		TERMINAL BLOCK
ltr	ecn no	dr	date	title	
J				TERMINAL BLOCK PLUGABLE, PLUG, SIGNAL, ENTRYSIDE HOOK	
		angles	tolerance	scale	dwg no
		$X \pm 1^\circ$	$X.X \pm 0.5[.020]$	$\frac{MM}{INCH}$	sheet 4 of 5
		dr	BEER FU	062509	20020008
		enr	BEER FU	062509	A4
		chr	GARY HSEH	062509	type
		appd	JOSEPH HSIA	062509	CUSTOMER Drawing
sheet	revision				
index	sheet				

PRODUCT NUMBER	SERIES NAME	PITCH
20020008-HXXXXXXLF	02-508	5.08 mm



Dim A

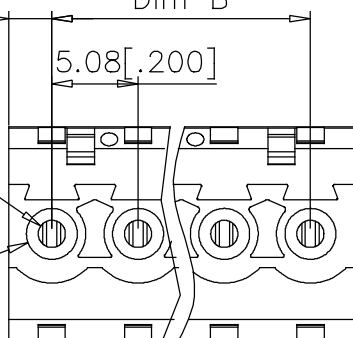


P

Dim B

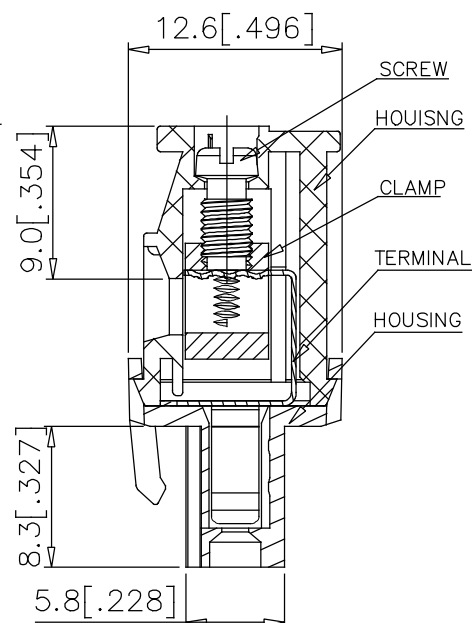
ø1.60[.063]

ø3.00[.118]

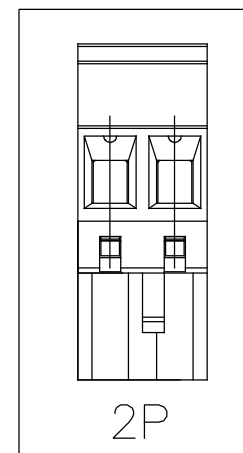
N= NUMBER OF POLES  
DIMENSION

Dim A	Nx5.08[.200]
Bim B	(N-1)x5.08[.200]

Poles	Tolerance
2P-6P	±0.15[.006]
7P-12P	±0.25[.010]
13P-18P	±0.30[.012]
19P-24P	±0.40[.016]



SECTION P-P



mat'l. code		surface	tolerance	projection	product family
		ASME Y14.5	ASME Y14.5		TERMINAL BLOCK
ltr	ecn no	dr	date	title	
J				TERMINAL BLOCK PLUGABLE, PLUG, SIGNAL, ENTRY SIDE HOOK	
		angles	tolerances unless otherwise specified	scale	dwg no
		X.X	±0.5[.020]	MM	sheet 5 of 5
		X'±1'	X.XX ±0.3[.012]	INCH	size
		dr	BEER FU	062509	20020008
		enr	BEER FU	062509	A4
		chr	GARY HSIEH	062509	type
		appd	JOSEPH HSIA	062509	CUSTOMER Drawing
sheet	revision				
index	sheet				