

PRODUCT NB	NB OF POS.	DIM"A"	DIM"B"	DIM"C"	DIM"D"	DIM"E"	POLAR. POS.	
76427-001	2 x 6	15.875	28.88	33.07	39.07	45.07	1	6
76247-002	2 x 7	19.05	32.05	36.25	42.25	48.25	1	7
76427-003	2 x 10	28.57	41.58	45.77	51.77	57.77	1	10
76427-004	2 x 12	34.92	47.93	52.12	58.12	64.12	1	12
76427-005	2 x 4	9.52	22.53	26.72	32.72	38.72	1	4

PART NUMBER

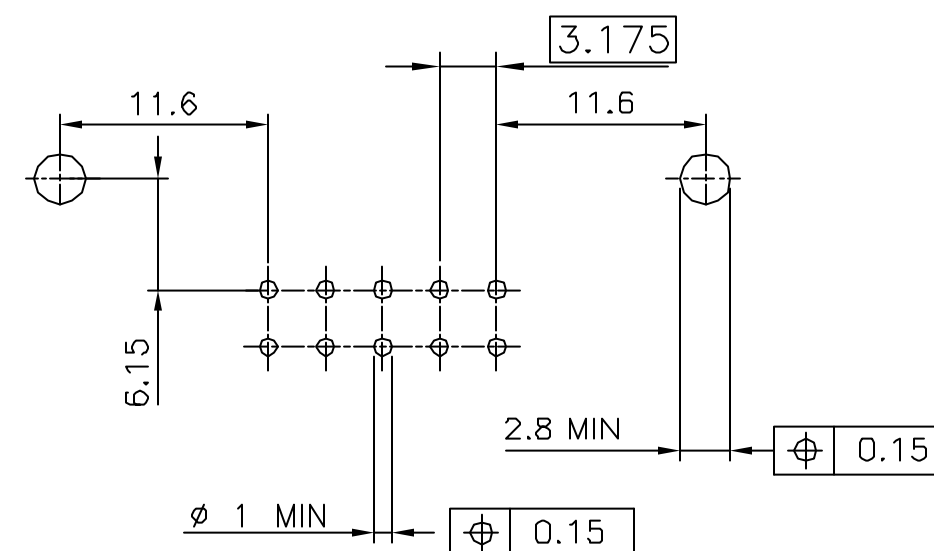
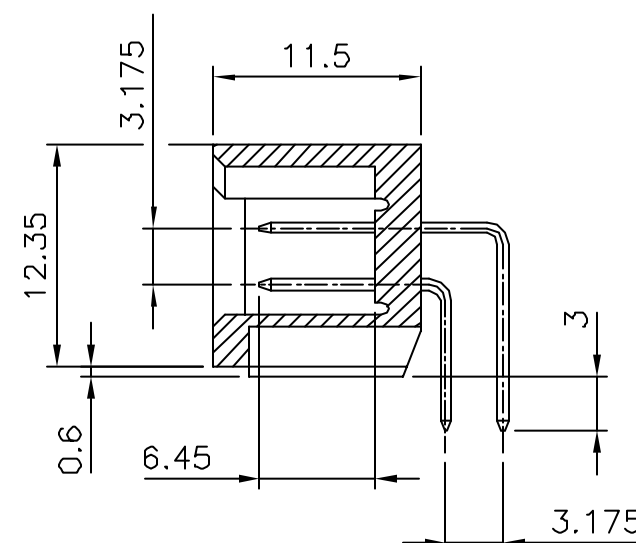
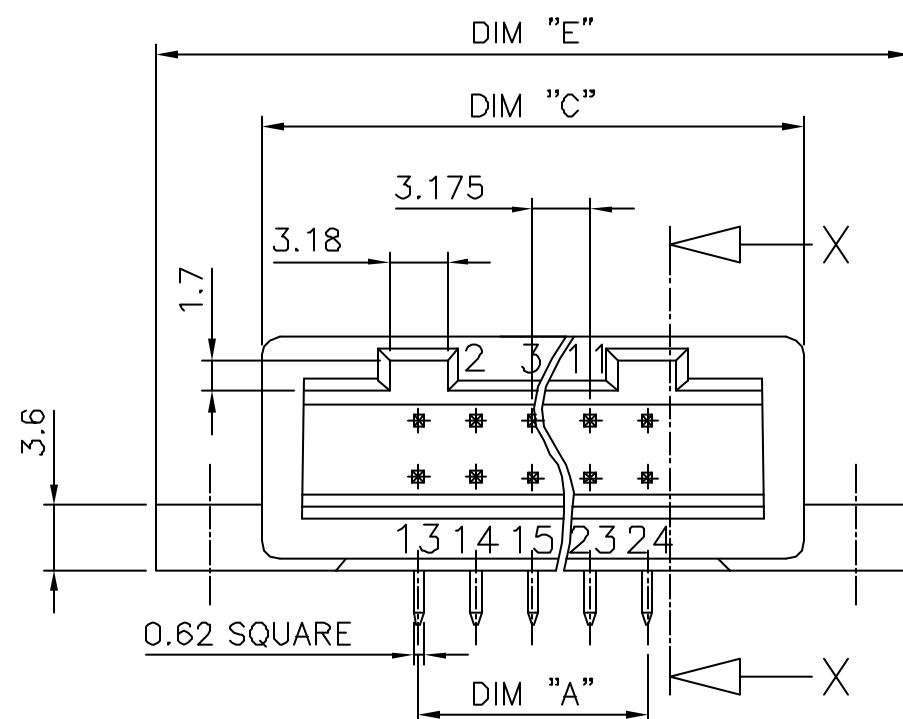
76427-YXXZ

OPTIONS LETTER "P" FOR PACKAGING IN TRAYS

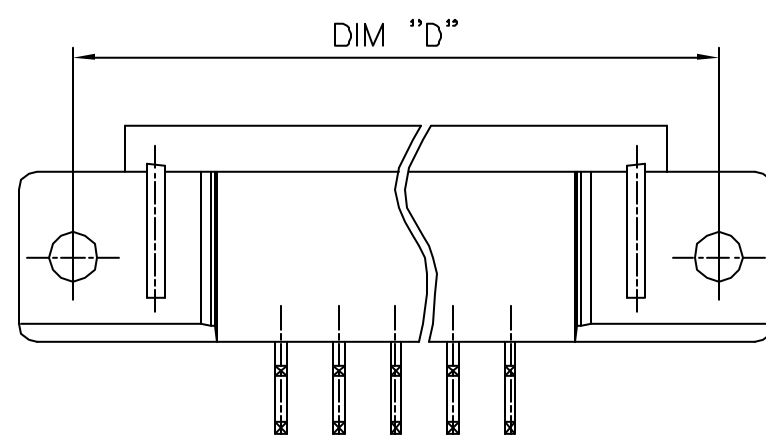
VERSION (PIN LENGTH & SIZE)

PLATING

BASE PART NUMBER



RECOMMENDED HOLE PATTERN



NOTES:

- 1 - PLASTIC MATERIAL : POLYAMID 25% GLASSFILLED COLOR BLACK
- PIN MATERIAL : COPPER ALLOY.
- 2 - THIS HEADER IS USED IN COMBINATION WITH A BERG POLARIZED MAXI LATCH HOUSING , REF 65258-YXX.
- 3 - PACKAGING IN ANTISTATIC POLY BAGS.

76427-1XX	0.76µm Au	3.8µm SnPb MIN
76427-0XX	3.8µm SnPb MIN	3.8µm SnPb MIN
PLATING CODE	CONTACT AREA	SOLDER AREA
	PLATING THICKNESS OVER 1.27µm Ni	

mat'L. code SEE NOTE 1				surface ISO 1302	tolerance ISO 406 ISO 1101	projection mm	product family BERGCON	
Ltr	ecn na	dr	date	tolerances unless otherwise specified		mm	title POLARIZED R.A. HEADER	
K	F30338	JMC	93.04.06	angles	linear			
L	F60696	JMC	96.10.04			scale 1:1	dwg no 76427	
M	F06-0207	LMU	06.07.27					
				dr	COMPAGNON J	96.02.08	sheet 1 of 1	
				engr	JMC	96.02.08		
				chr			size A3	
				appd	JMC	96.02.08		
sheet index		revision sheet					type CUSTOMER Drawing	