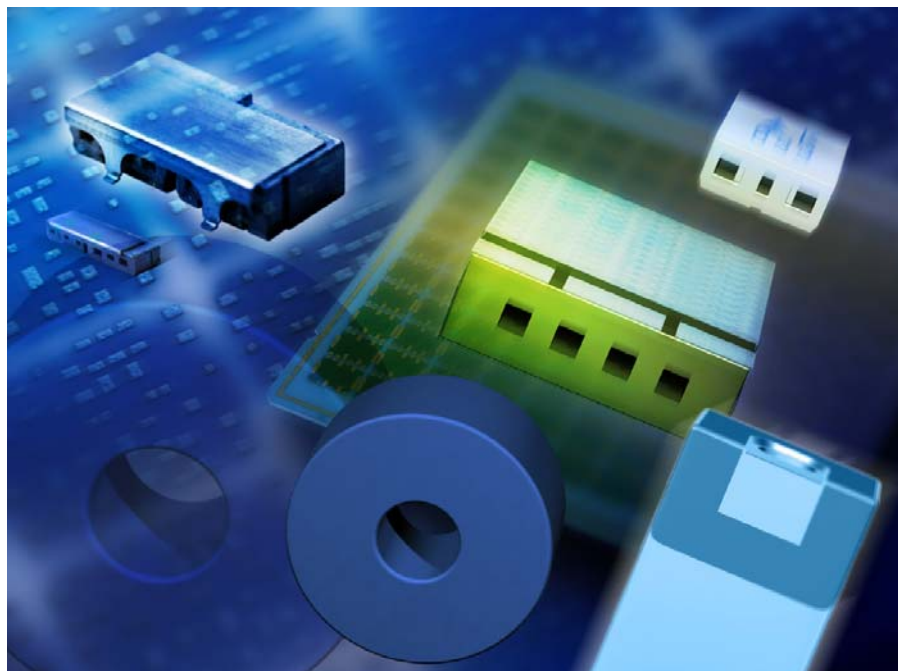


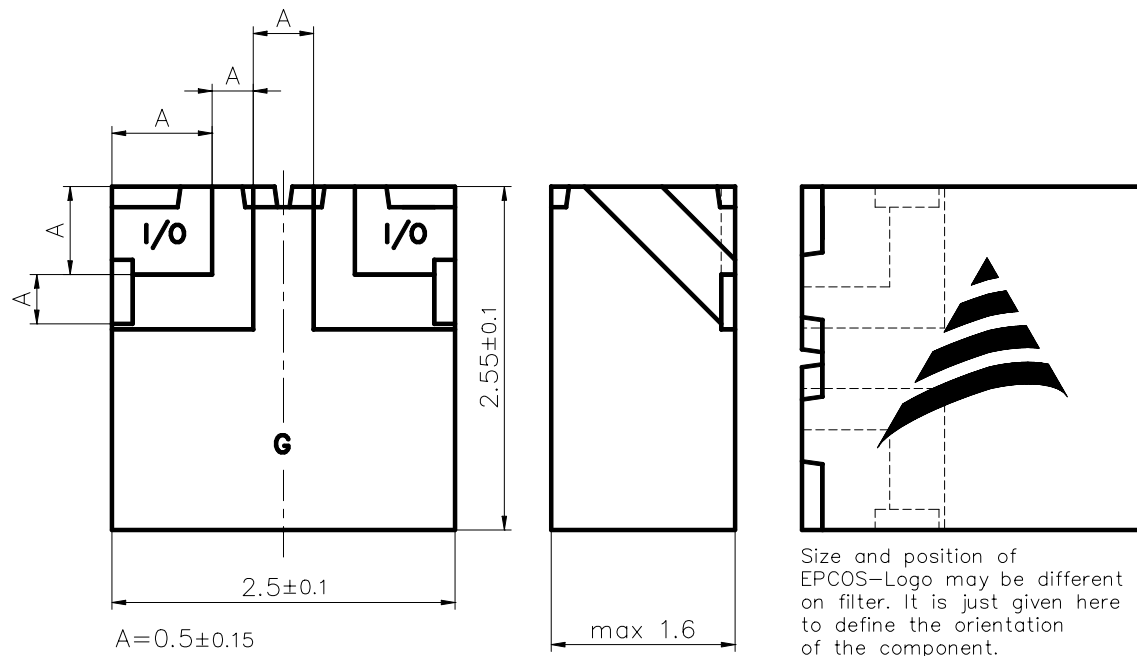
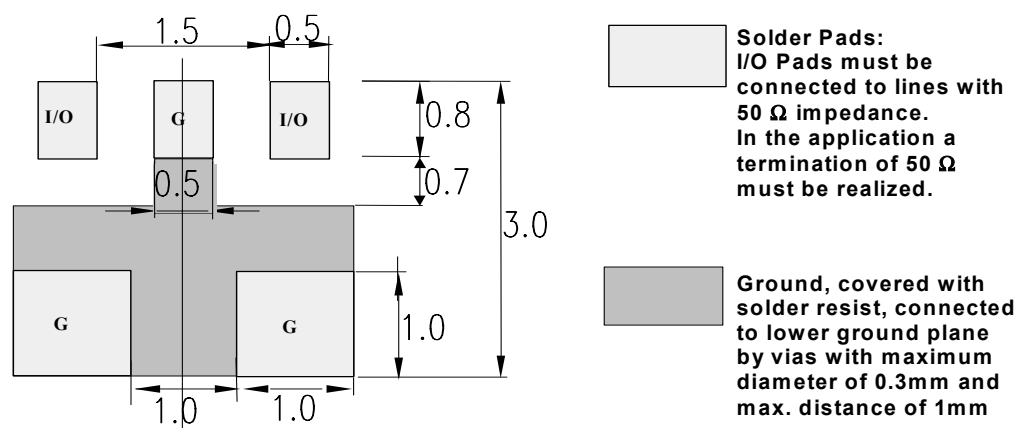
**Preliminary datasheet**

**Features**

- SMD filter consisting of coupled resonators with stepped impedances
- low losses
- high attenuations at GSM (900, 1800) and UMTS bands
- high attenuation at 2 times center frequency
- (NdBa)TiO<sub>3</sub> ( $\epsilon_r = 88$  /  $TC_f = 0 \pm 10$  ppm/K) with a coating of copper (10 $\mu$ m) and tin (>5 $\mu$ m)
- Excellent reflow solderability, no migration effect due to copper/tin metallization

**Index**

- |        |   |
|--------|---|
| Page 2 | <ul style="list-style-type: none"> <li>• Dimension Limits , Marking</li> <li>• Recommended footprint</li> </ul>                           |
| Page 3 | <ul style="list-style-type: none"> <li>• Characteristics</li> <li>• Maximum ratings</li> <li>• Typical passband characteristic</li> </ul> |
| Page 4 | <ul style="list-style-type: none"> <li>• Processing information</li> <li>• Soldering requirements</li> <li>• Delivery mode</li> </ul>     |

ISSUE DATE	27.08.03	ISSUE	P1	PUBLISHER	SAW MWC PD F	PAGE	1/4
------------	----------	-------	----	-----------	--------------	------	-----

**Preliminary datasheet**
**Dimension Limits , Marking**

**Recommended footprint**


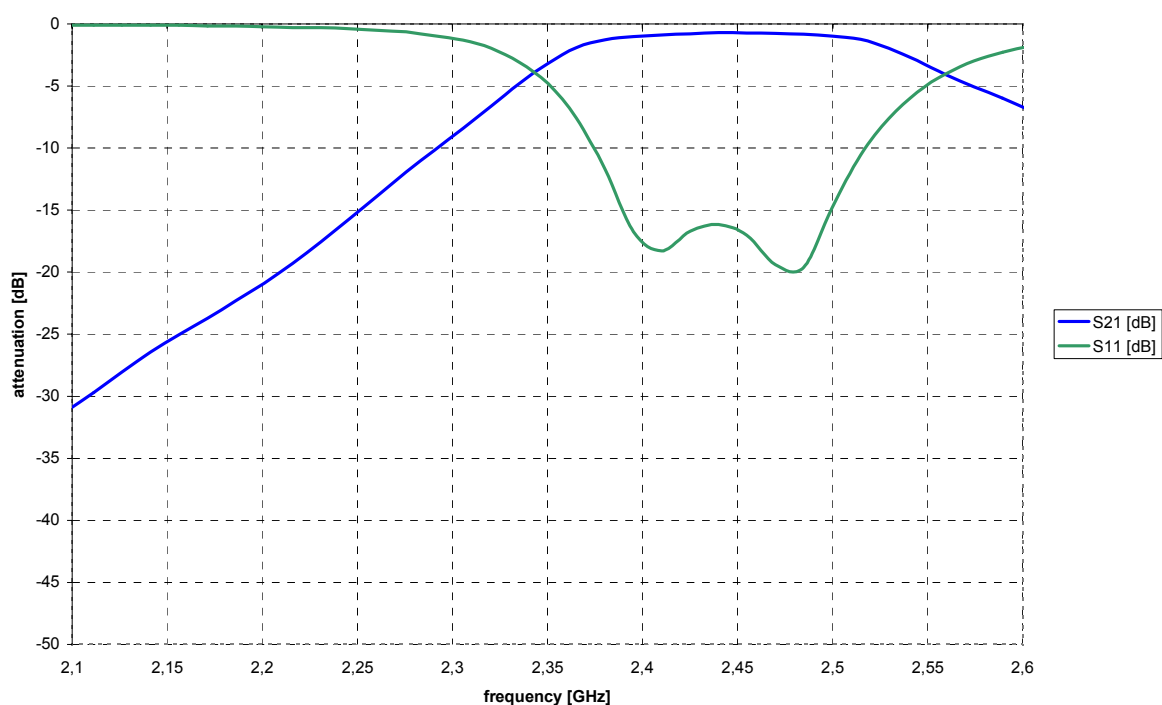
## Characteristics

		min.	typ.	max.	
Center frequency	$f_C$	-	2.450	-	GHz
Insertion loss	$\alpha_{IL}$		1.2	1.6	dB
Passband (2400- 2500)	$B$	100			MHz
Amplitude ripple (peak - peak)	$\Delta\alpha$		0.4	0.8	dB
Standing wave ratio	SWR		1.5	2.0	
Impedance	$Z$		50		$\Omega$
Attenuation	$\alpha$				
	at DC to 880 MHz	50	55		dB
	at 880 to 960 MHz	45	50		dB
	at 960 to 1990 MHz	40	45		dB
	at 1990 to 2100 MHz	25	30		dB
	at 2100 to 2170 MHz	20	25		dB
	at 3000 to 3200 MHz	15	20		dB
	at 3200 to 3500 MHz	20	25		dB
	at 3500 to 4800 MHz	27	30		dB
	at 4800 to 5000 MHz	25	30		dB

## Maximum ratings

IEC climatic category (IEC 68-1)		- 40 /+ 90/56	
Operating temperature	$T_{Op}$	- 40 / + 85	°C

## Typical passband characteristic



## Microwave Ceramics and Modules