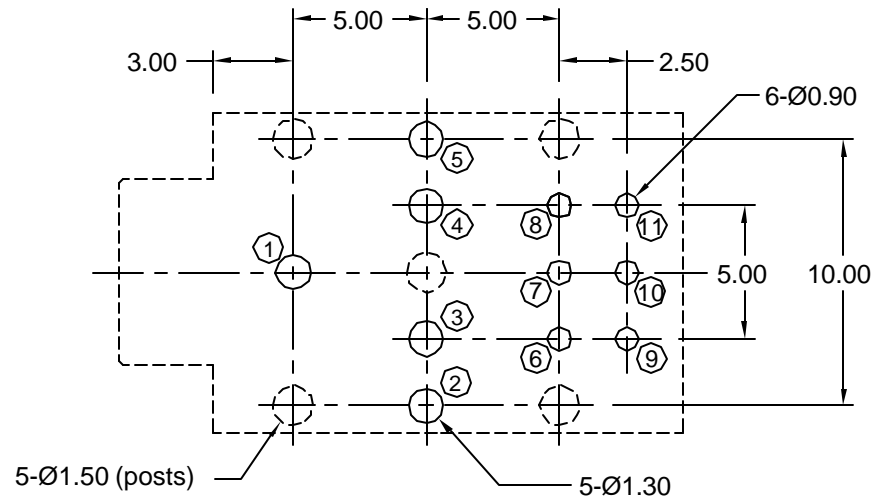
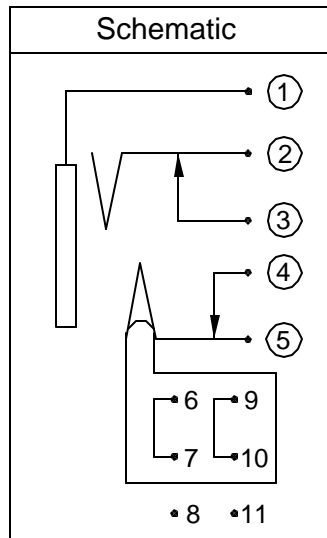
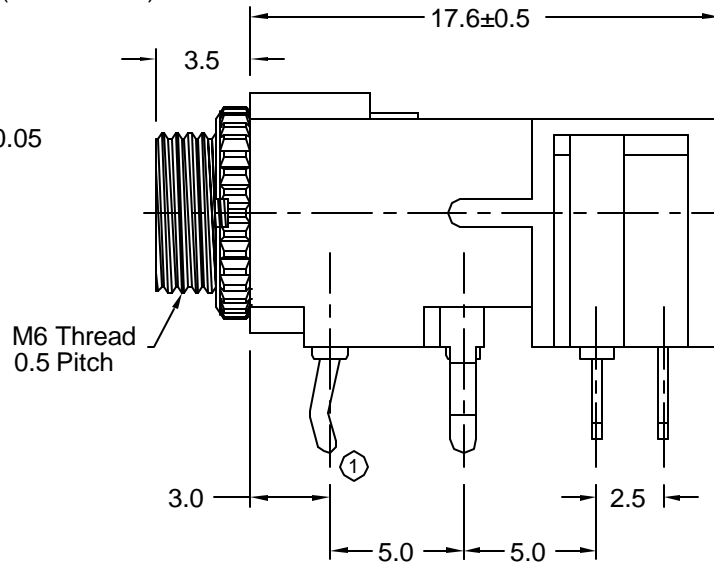
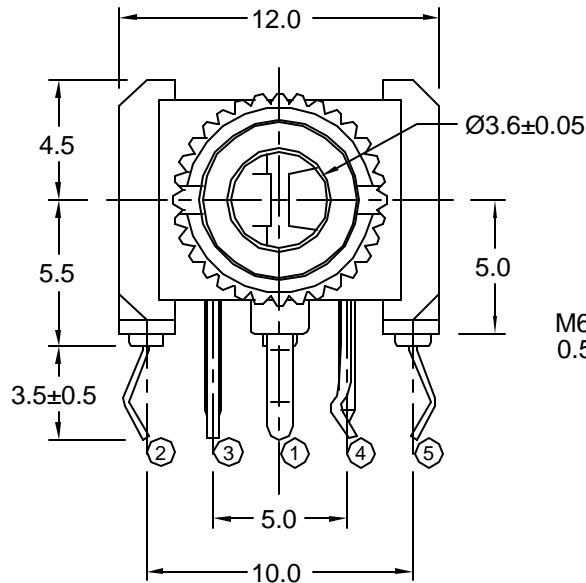


M6 Knurled Nut Included
(not installed)



Recommended PCB Layout
(Bottom View)

Material and Finish

Housing: high temp. thermoplastic, black color, UL 94V-0 rated, reflow process compatible

Bushing: copper alloy, nickel plated

Sleeve: SPCC, nickel plated

Jack Terminals: copper alloy, tin plated over nickel underplating

Slide Switch Terminals: copper alloy, silver plated over nickel underplating

Recommended Reflow Temperature:
230°C for 30 seconds
260°C maximum

Mechanical Characteristics

Insertion Force:
0.4kg - 3.0kg

Extraction Force:
0.3kg - 3.0kg

Durability: 5000 mating cycles

Electrical Characteristics

Contact Resistance:
Before Test: 50 mohms max.
After Durability Test:
100 mohms max.

Insulation Resistance:
more than 100 Megohms
at 500V DC

Dielectric Strength:
500V AC RMS for 1 minute

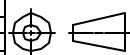
Operating Temperature:
-25°C to +85°C

RoHS COMPLIANT
EU Directive 2002/95/EC



Tolerances
X.X ± 0.25
X.XX ± 0.15
Unless Stated
Otherwise

REV.	DATE	DESCRIPTION	REV. BY	CHK. BY	DRAWN BY	DATE
A1	9/6/05	New Drawing	R. Aguirre	H. MA	R. Aguirre	07/11/05



UNITS
mm

STX-3100-11C-HT

3.5mm Audio Jack, Threaded Base, Reflow Compatible, RoHS Compliant

1 Double-Pole/Double-Throw Switch, 1 Double-Pole/Single-Throw Switch



Mouser Electronics

Authorized Distributor

Click to View Pricing, Inventory, Delivery & Lifecycle Information:

[Kycon:](#)

[STX-3100-11C-HT](#)