

**DESIGNED & DIMENSIONED
IN MILLIMETERS[INCHES]**

DO NOT
SCALE FROM
THIS PRINT

S2M-1XX-XX-X-D-XX-XX

No OF POSITIONS _____

** -02, ** -04, -05, -07, -10, -15, -20, -25, & -30 (PER ROW) AVAILABLE AS STANDARD;
OTHER SIZES BETWEEN -05 THRU -50
AVAILABLE AS ASO

** -02, ** -04, -05, -07, -10, -15, -20, -25, & -30 (PER ROW) AVAILABLE AS STANDARD;
OTHER SIZES BETWEEN -05 THRU -50
AVAILABLE AS ASO

-01: THROUGH HOLE
(USE C-56-01-X)
-02: SURFACE MOUNT
(USE C-56-05-X)
(31-50 POSITION, NOT RELEASED)

-01: THROUGH HOLE
(USE C-56-01-X)
-02: SURFACE MOUNT
(USE C-56-05-X)
(31-50 POSITION, NOT RELEASED)

-F: FLASH GOLD SELECTIVE (USE C-56-XX-F)
-S: SELECTIVE GOLD (USE C-56-XX-S)
-L: LIGHT SELECTIVE (USE C-56-XX-L)

-F: FLASH GOLD SELECTIVE (USE C-56-XX-F)
-S: SELECTIVE GOLD (USE C-56-XX-S)
-L: LIGHT SELECTIVE (USE C-56-XX-L)

-TR: TAPE & REEL
(-02 LEAD ONLY)-TR: TAPE & REEL
(-02 LEAD ONLY)

-K: POLYIMIDE FILM PAD
(USE K-DOT-.217-.313-.005)
(-02 LEAD ONLY)

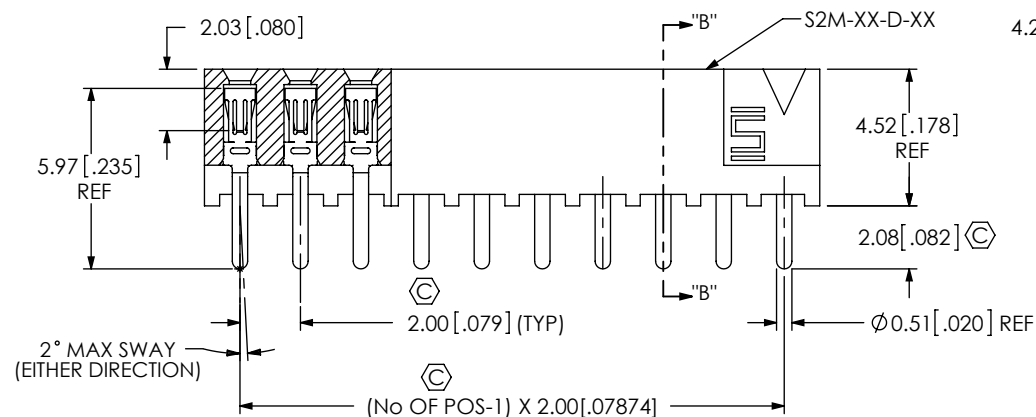
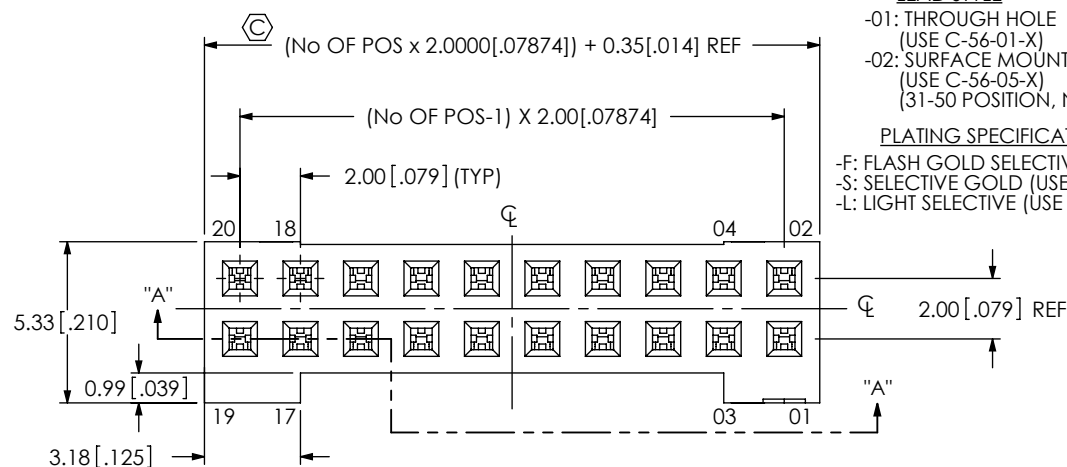
-K: POLYIMIDE FILM PAD
(USE K-DOT-.217-.313-.005)
(-02 LEAD ONLY)

-LC: LOCKING CLIP
(-02 LEAD STYLE ONLY)
(USE LC-07-TM)

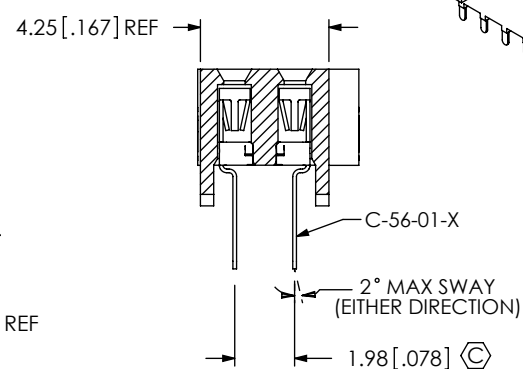
-DS: DUAL SCREW DOWN FOR
.062 BOARD
(SEE FIG 4 & 5 SHT 3)
(NOT AVAILABLE WITH
-LC OPTION) (ONLY AVAILABLE
2-30 POSITIONS)(USES S2M-XX-D-DS,
CPS-RR-XX-XX-X, ACCRT-01 AND
WT-27-02-T ALWAYS FILLED)

-D: DOUBLE ROW

(**= MUST CHOOSE -02 LEAD AND -TR PACKAGING)



SECTION "A"-"A"



SECTION "B"-"B"

FIG 1
S2M-110-01-XX-D SHOWN

UNLESS OTHERWISE SPECIFIED,
DIMENSIONS ARE IN MILLIMETERS.
TOLERANCES ARE:

DECIMALS	ANGLES
X.X: $\pm 0.3[.01]$	2°
X.XX: $\pm 0.13[.005]$	
X.XXX: $\pm 0.051[.0020]$	

PROPRIETARY NOTE

THIS DOCUMENT CONTAINS CONFIDENTIAL AND PROPRIETARY INFORMATION AND ALL DESIGN, MANUFACTURING, REPRODUCTION, USE, PATENT RIGHTS AND SALES RIGHTS ARE EXPRESSLY RESERVED BY SAMTEC, INC. THIS DOCUMENT SHALL NOT BE DISCLOSED, IN WHOLE OR PART, TO ANY UNAUTHORIZED PERSON OR ENTITY NOR REPRODUCED, TRANSFERRED OR INCORPORATED IN ANY OTHER PROJECT IN ANY MANNER WITHOUT THE EXPRESS WRITTEN CONSENT OF SAMTEC, INC.

PROPRIETARY NOTE

THIS DOCUMENT CONTAINS CONFIDENTIAL AND PROPRIETARY INFORMATION AND ALL DESIGN, MANUFACTURING, REPRODUCTION, USE, PATENT RIGHTS AND SALES RIGHTS ARE EXPRESSLY RESERVED BY SAMTEC, INC. THIS DOCUMENT SHALL NOT BE DISCLOSED, IN WHOLE OR PART, TO ANY UNAUTHORIZED PERSON OR ENTITY NOR REPRODUCED, TRANSFERRED OR INCORPORATED IN ANY OTHER PROJECT IN ANY MANNER WITHOUT THE EXPRESS WRITTEN CONSENT OF SAMTEC, INC.

samtec

520 PARK EAST BLVD, NEW ALBANY, IN 47150
PHONE: 812-944-6733 FAX: 812-948-5047
e-Mail: info@SAMTEC.com code: 55322

MATERIAL: DO NOT SCALE DRAWING
LCP COLOR: BLACK
CONTACT: BeCu

SHEET SCALE: 4:1


DESCRIPTION:	2mm DOUBLE ROW SOCKET STRIP
--------------	-----------------------------

DWG. NO.	S2M-1XX-XX-X-D-XX-XX
----------	----------------------

BY: T NEWTON 09-16-2010	SHEET 1 OF 4
-------------------------	--------------

F:\DWG\MISC\MKTG\S2M-1XX-XX-X-D-XX-XX-MKT.SLDDRW

NOTES:

1.  REPRESENTS A CRITICAL DIMENSION.
2. MINIMUM CONTACT RETENTION FORCE: 4.45 N [1.000 LB.].
3. "-LC" OPTION FOR A -.02 POSITION WILL HAVE ONLY ONE LOCKING CLIP (LC-07-X).
4. MINIMUM RETENTION FOR LOCKING CLIP, WELD TAB & ACCRT: 3.3 N [.75 LB.].

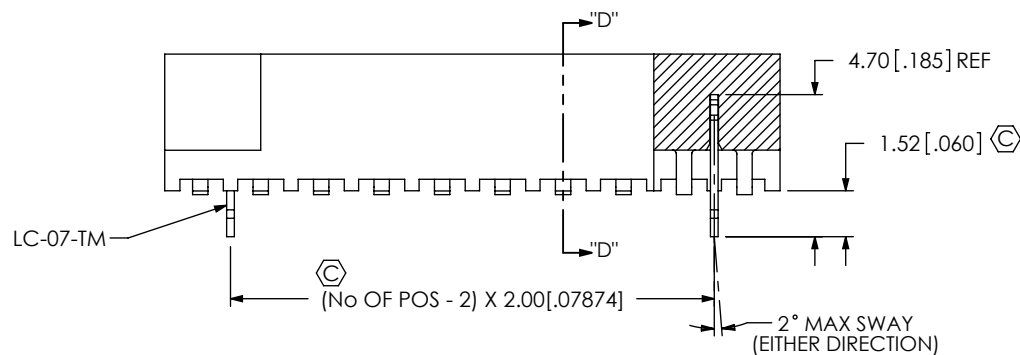
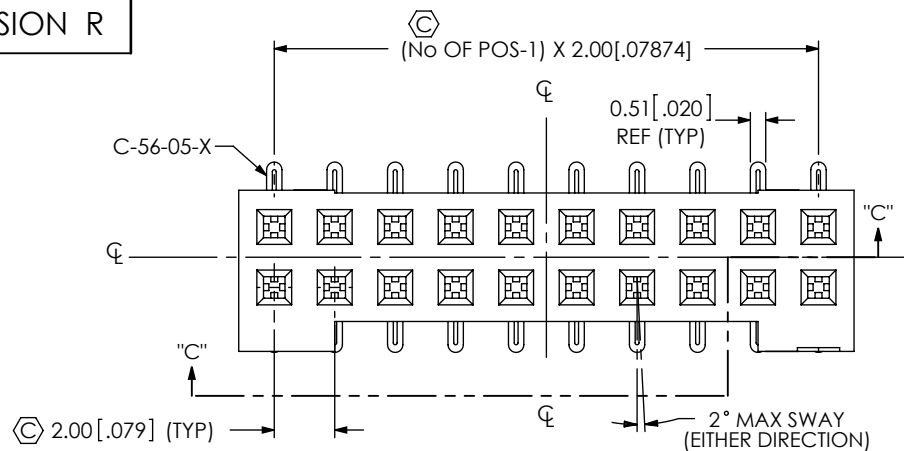
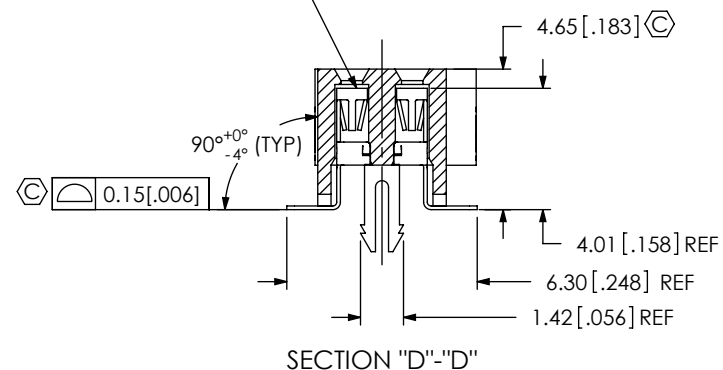


FIG 2
S2M-110-02-X-D-LC SHOWN
(SAME AS FIG 1, EXCEPT AS SHOWN)



SECTION "C"-"C"

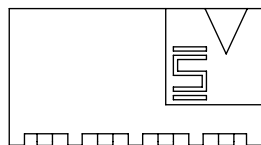
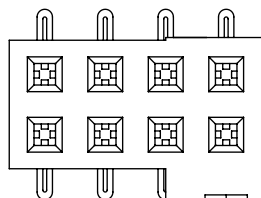
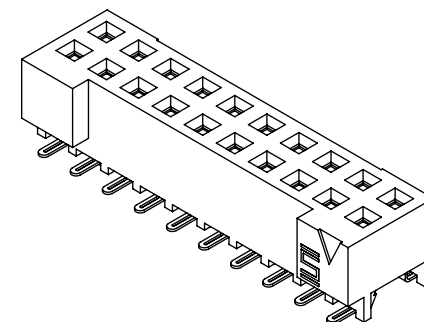


FIG 6
S2M-104-02-X-D SHOWN
(SAME AS FIG 1, EXCEPT AS SHOWN)



F:\DWG\MISC\MKTG\S2M-1XX-XX-X-D-XX-XX-MKT.SLDDRW

<p>PROPRIETARY NOTE</p> <p>THIS DOCUMENT CONTAINS CONFIDENTIAL AND PROPRIETARY INFORMATION AND ALL DESIGN, MANUFACTURING, REPRODUCTION, USE, PATENT RIGHTS AND SALES RIGHTS ARE EXPRESSLY RESERVED BY SAMTEC, INC. THIS DOCUMENT SHALL NOT BE DISCLOSED, IN WHOLE OR PART, TO ANY UNAUTHORIZED PERSON OR ENTITY NOR REPRODUCED, TRANSFERRED OR INCORPORATED IN ANY OTHER PROJECT IN ANY MANNER WITHOUT THE EXPRESS WRITTEN CONSENT OF SAMTEC, INC.</p> <p>DO NOT SCALE DRAWING</p> <p>SHEET SCALE: 4:1</p>	<p>samtec</p> <p>520 PARK EAST BLVD, NEW ALBANY, IN 47150 PHONE: 812-944-6733 FAX: 812-948-5047 e-Mail: info@SAMTEC.com code: 55322</p>	
	<p>DESCRIPTION:</p> <p>2mm DOUBLE ROW SOCKET STRIP</p>	
	<p>DWG. NO.</p> <p>S2M-1XX-XX-X-D-XX-XX</p>	
	<p>BY: T NEWTON 09-16-2010</p>	<p>SHEET 2 OF 4</p>

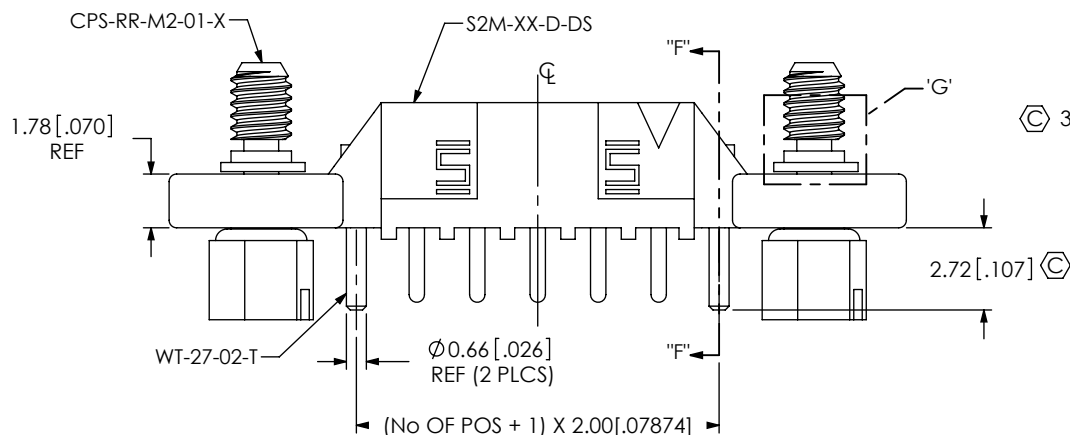
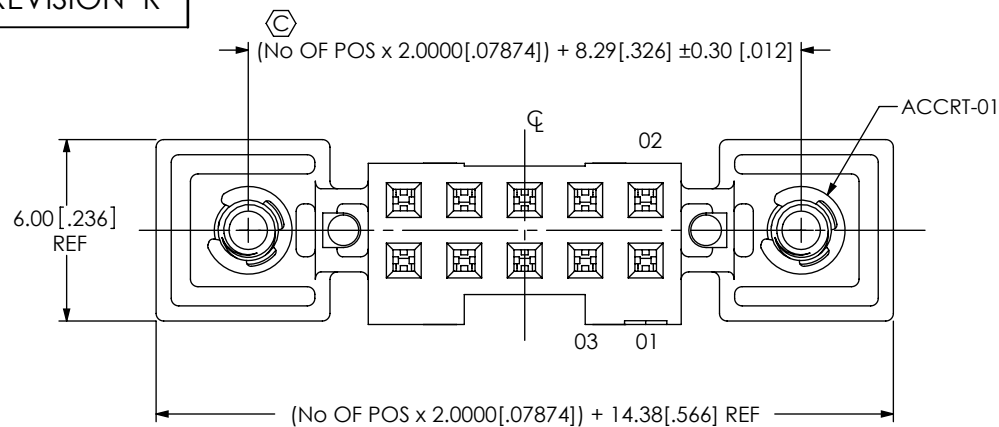
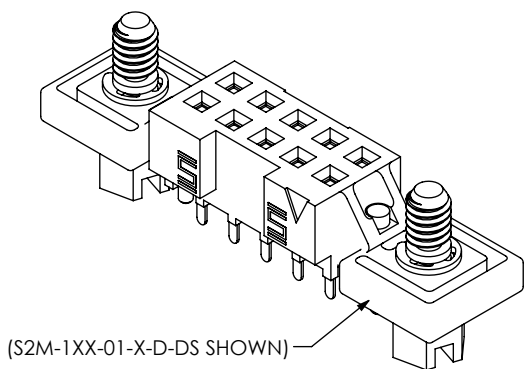
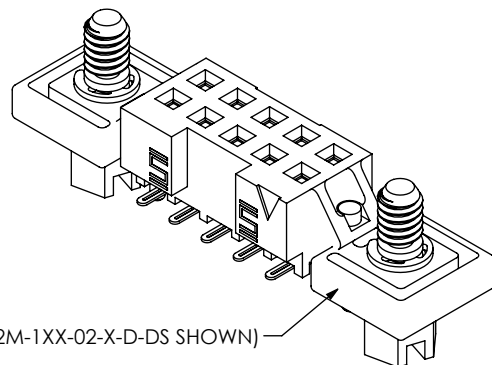


FIG 4
S2M-105-01-X-D-DS SHOWN
(SAME AS FIG 1, EXCEPT AS SHOWN)



(S2M-1XX-01-X-D-DS SHOWN)



(S2M-1XX-02-X-D-DS SHOWN)

F:\DWG\MISC\MKTG\S2M-1XX-XX-X-D-XX-XX-MKT.SLDDRW

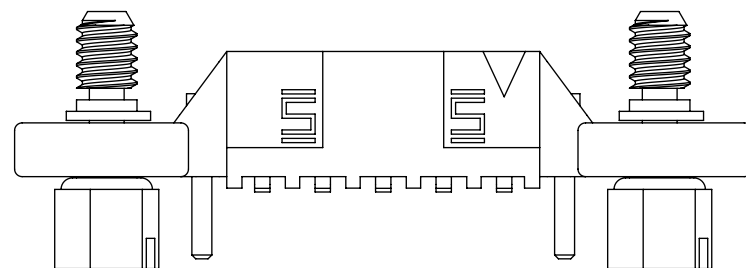
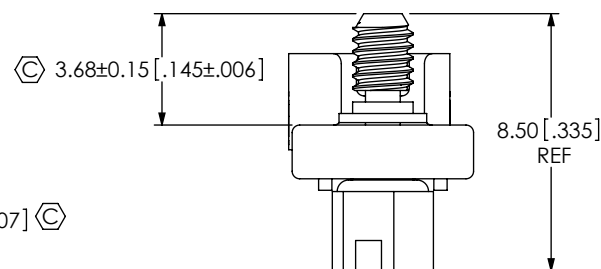
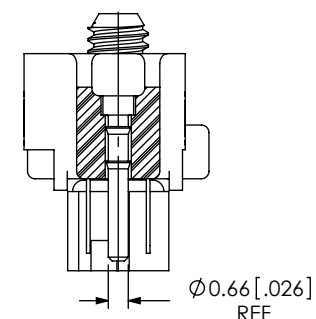


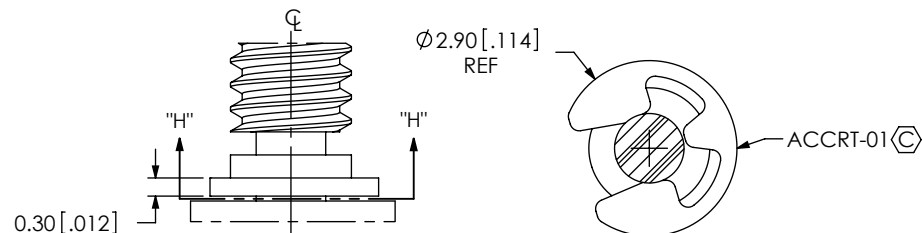
FIG 5
S2M-105-02-X-D-DS SHOWN
(SAME AS FIG 4, EXCEPT AS SHOWN)



DETAIL 'G'
SCALE 8 : 1



SECTION "F"-"F"



SECTION "H"-"H"
SCALE 8 : 1

PROPRIETARY NOTE
THIS DOCUMENT CONTAINS CONFIDENTIAL AND
PROPRIETARY INFORMATION AND ALL DESIGN,
MANUFACTURING, REPRODUCTION, USE, PATENT RIGHTS
AND SALES RIGHTS ARE EXPRESSLY RESERVED BY SAMTEC,
INC. THIS DOCUMENT SHALL NOT BE DISCLOSED, IN WHOLE
OR PART, TO ANY UNAUTHORIZED PERSON OR ENTITY NOR
REPRODUCED, TRANSFERRED OR INCORPORATED IN ANY
OTHER PROJECT IN ANY MANNER WITHOUT THE EXPRESS
WRITTEN CONSENT OF SAMTEC, INC.

DO NOT SCALE DRAWING

SHEET SCALE: 4:1

samtec

520 PARK EAST BLVD, NEW ALBANY, IN 47150
PHONE: 812-944-6733 FAX: 812-948-5047
e-Mail: info@SAMTEC.com code: 55322

DESCRIPTION:
2mm DOUBLE ROW SOCKET STRIP

DWG. NO.
S2M-1XX-XX-X-D-XX-XX

BY: T NEWTON 09-16-2010 SHEET 3 OF 4

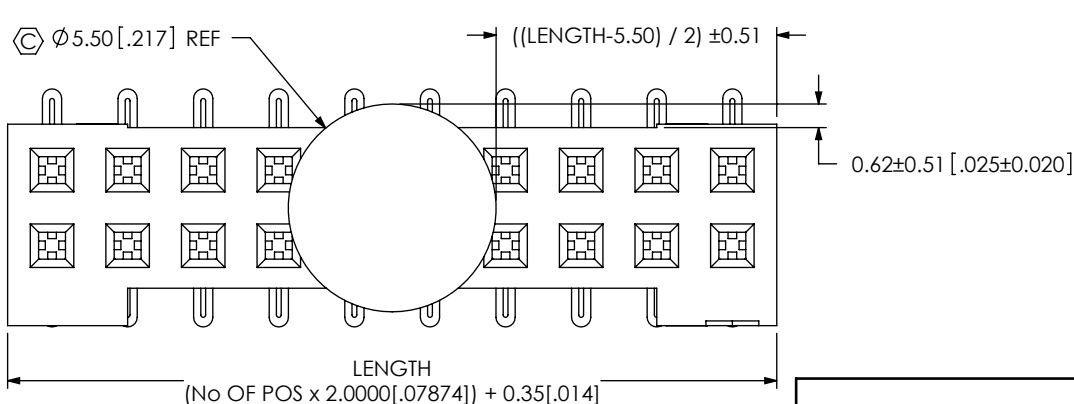
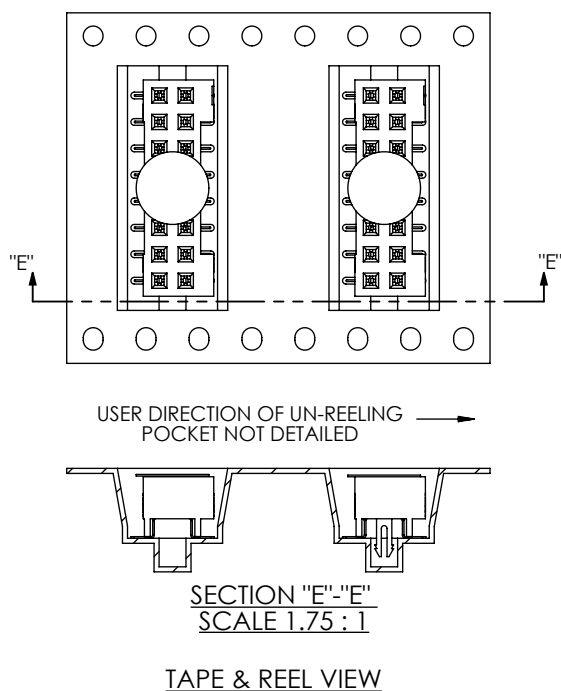
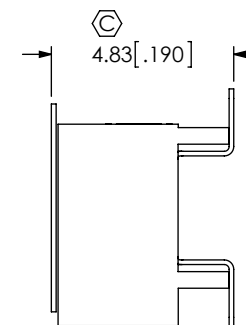
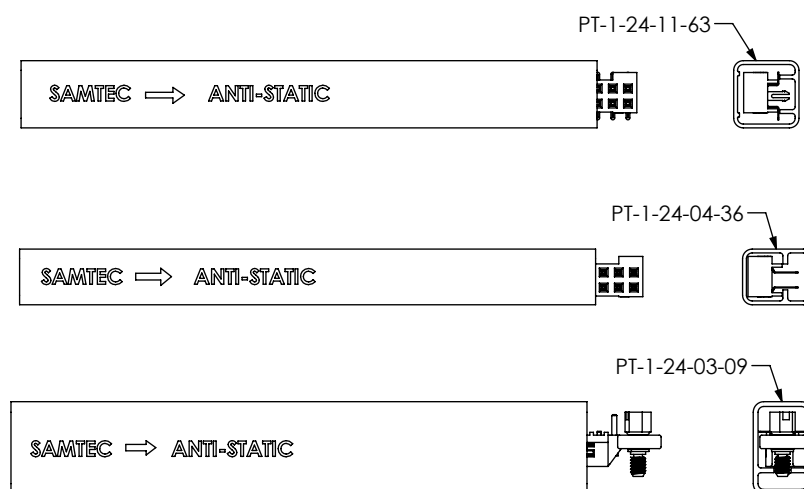


FIG 3
S2M-110-02-X-D-K SHOWN
(SAME AS FIG 2, EXCEPT AS SHOWN)



PACKAGING VIEW
(#1 PIN OPPOSITE THE DIRECTION ARROW ON THE TUBE)



TUBE TABLE		
LEAD STYLE	TUBE	PLUG
-01	PT-1-24-04-36	TP-09
-02	PT-1-24-11-63	TP-24
-XX-DS	PT-1-24-03-09	TP-03

F:\DWG\MISC\MKTG\S2M-1XX-XX-X-D-XX-XX-MKT.SLDDRW

PROPRIETARY NOTE
THIS DOCUMENT CONTAINS CONFIDENTIAL AND PROPRIETARY INFORMATION AND ALL DESIGN, MANUFACTURING, REPRODUCTION, USE, PATENT RIGHTS AND SALES RIGHTS ARE EXPRESSLY RESERVED BY SAMTEC, INC. THIS DOCUMENT SHALL NOT BE DISCLOSED, IN WHOLE OR PART, TO ANY UNAUTHORIZED PERSON OR ENTITY NOR REPRODUCED, TRANSFERRED OR INCORPORATED IN ANY OTHER PROJECT IN ANY MANNER WITHOUT THE EXPRESS WRITTEN CONSENT OF SAMTEC, INC.

DO NOT SCALE DRAWING

SHEET SCALE: 4:1

samtec

520 PARK EAST BLVD, NEW ALBANY, IN 47150
PHONE: 812-944-6733 FAX: 812-948-5047
e-Mail: info@SAMTEC.com code: 55322

DESCRIPTION:
2mm DOUBLE ROW SOCKET STRIP

DWG. NO.
S2M-1XX-XX-X-D-XX-XX

BY: T NEWTON 09-16-2010 SHEET 4 OF 4