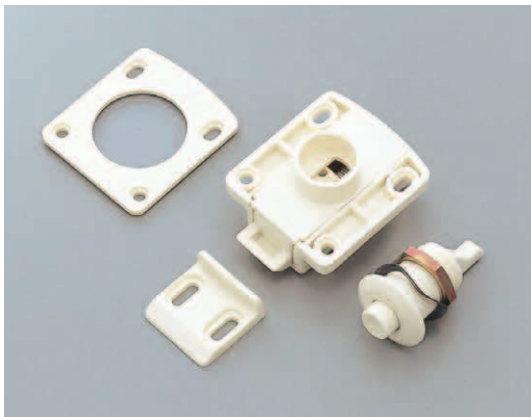


TL-256 Push Off Slam Latch

A single touch push lock
for many kinds of handles.

PRODUCT



Characteristics

1. With its sliding latch, safer and more secure lock can be obtained.
2. Can be applied to assorted types of door thickness.
3. Can install it onto any part of the door.
(You can put it on to upper part / lower part / left side / right side of the door.)
4. Processing the door and setting the latch are quite easy.
5. Can be applied on both a covering door and an inset door.
6. The latch is made of strong plastics such as polyacetal resin, polyamide resin, and ABS resin, etc., which are used as composition of machine parts, to get strong and durable performance.

Application

Vehicles / Vessels / Industrial machines / Machine tools

Specification

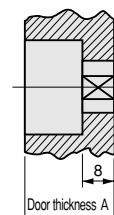
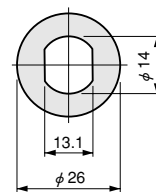
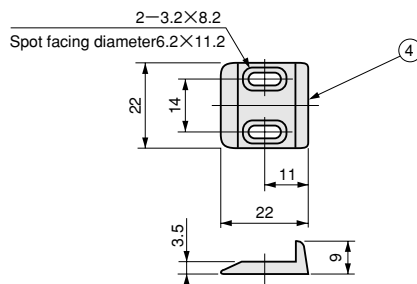
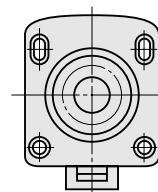
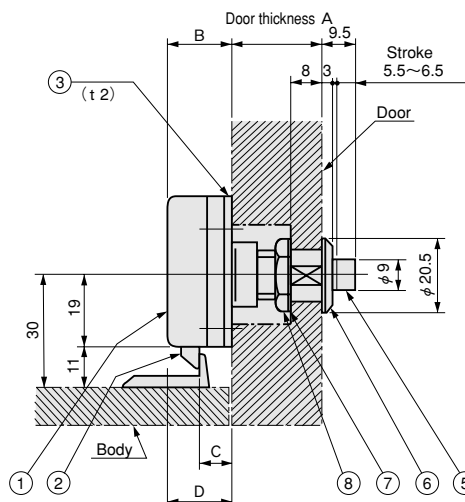
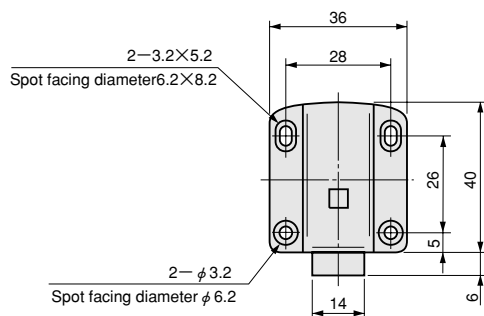
1. It is a combination type lock of a push button and the slide latch. Since a handle is not included, choose a handle from wide variety of choices on a separate order.
2. Depending on the door thickness, two types of latch are available, and each of both uses a spacer to make it fit to the door.

Specification (for a wooden application)

Model No.	Spacer Requirement	Door Thickness A	B	C	D	Net Weight (g)	Code No.
TL-256-1	○	18	17	9	17	23.5	1724
	○	19					
	×	20	15	7	15		
	×	21					
TL-256-2	○	22	17	9	17	23.5	1725
	○	23					
	×	24	15	7	15		
	×	25					

Parts List

No.	Part Name	Material	Finish
1	Body	PA	Ivory
2	Latch		
3	Spacer		
4	Keeper	POM	
5	Push Button		
6	Pedestal	PA	
7	Wave Washer	S	
8	Locknut		Zn



Layout of a Hole for Installation
(for a wooden application)

