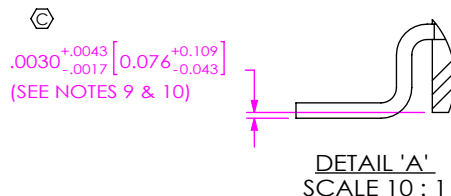


DO NOT  
SCALE FROM  
THIS PRINT



SIB-1XX-XX-XX-S-XX-XX

**NO OF POSITIONS**  
-02 THRU -30  
(PER ROW)

**LEAD STYLE**  
-02: SURFACE MOUNT  
(USE C-228-X)

**PLATING SPECIFICATION**  
-F: FLASH SELECTIVE  
(USE C-228-F)  
-FM: FLASH SELECTIVE, PURE TIN,  
MATTE FINISH  
(USE C-228-F)

**THREADED INSERT OPTION**  
[NOT AVAILABLE ON 30 POS]  
\* -E: TI-2-56-115 (ENGLISH)  
\* -M: TI-M2-4-115-N (METRIC)  
(SEE FIG. 2, SHEET 2)  
\* -TI: NO INSERTS PLACED IN BODY  
(SEE TABLE 1 ON SHEET 2 FOR  
-TI POSITIONAL OFFERINGS)

**OPTION**  
-LC: LOCKING CLIPS  
(USE LC-09-TM) (SEE NOTE 13)  
[N/A WITH THREADED INSERT OPTION  
-E, -M OR -TI]

**ROW SPECIFICATION**  
-S: SINGLE (USE SIBC-XX-02-S)

\* AVAILABLE TO EXISTING CUSTOMERS ONLY

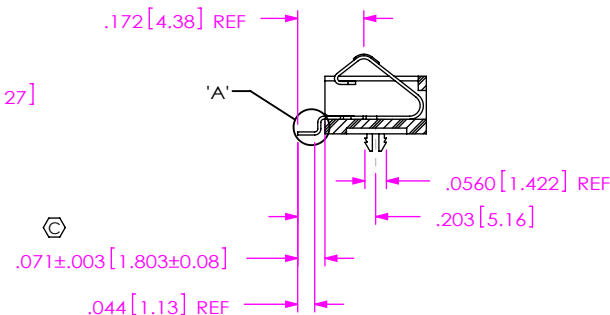
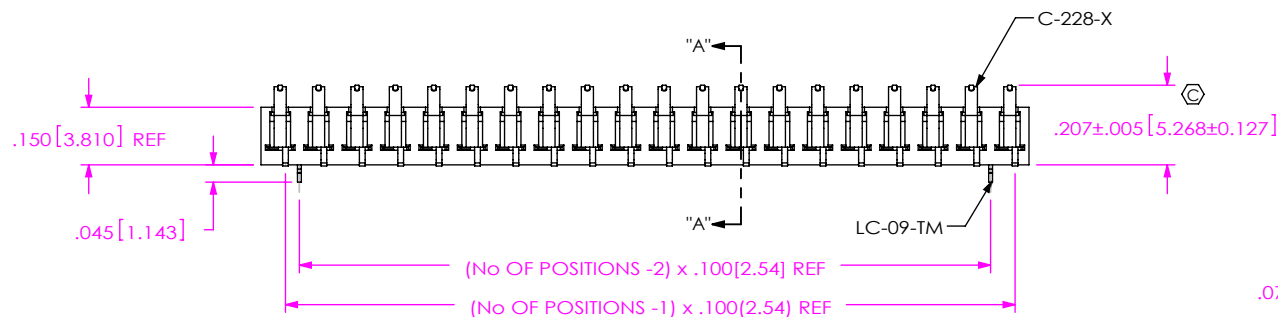
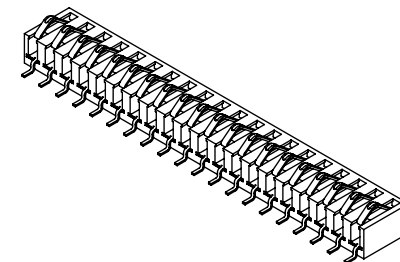
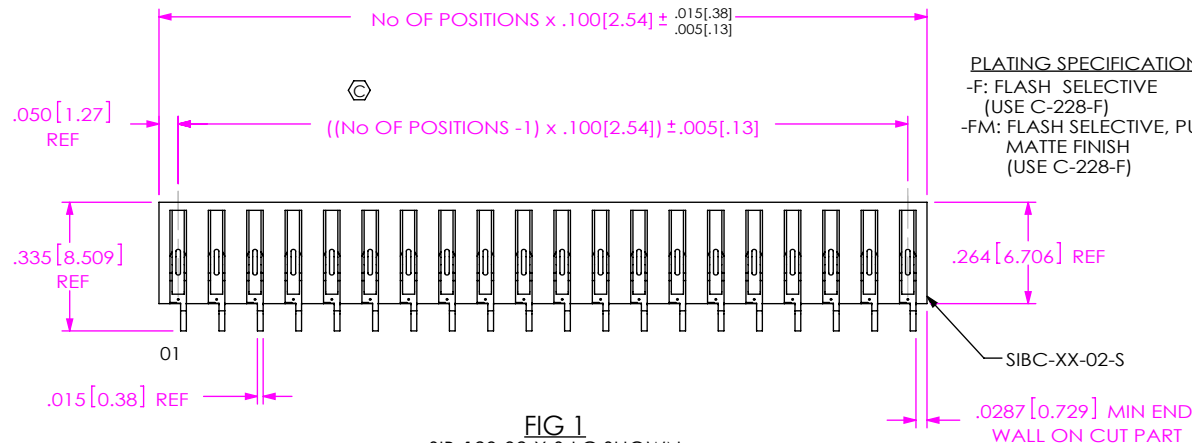


TABLE 2: COPLANARITY

POSITIONS	"A"
-02 THRU -19	.004[.10]
-20 THRU -30	.006[.15]

NOTES:

1. REPRESENTS A CRITICAL DIMENSION.
2. COPLANARITY: SEE TABLE 2.
3. BURR ALLOWANCE: .0015[.038] MAX.
4. MAXIMUM CUT FLASH: .010[.3], CAN NOT EXTEND PAST TAIL.
5. MINIMUM PUSHOUT FORCE: 1 LB.
6. MAXIMUM ALLOWABLE BOW: .004[.10] INCH/INCH AFTER ASSEMBLY.
7. THREADED INSERT MUST HANDLE 25 IN-OZ OF TORQUE WITHOUT ROTATING OR LOOSENING.
8. THREADED INSERT RETENTION: 10 LBS. MINIMUM.
9. MAX VARIATION FROM PIN TO PIN TO BE .002.
10. MEASURED ON UNCUT PARTS.
11. NOTE DELETED.
12. NOTE DELETED.
13. DUE TO THE HIGH AMOUNT OF INSERTION FORCE NEEDED, THE -LC OPTION IS NOT COMPATIBLE WITH AUTO PLACEMENT. SAMTEC RECOMMENDS MANUAL PLACEMENT FOR ALL ASSEMBLIES WITH THE -LC OPTION.

UNLESS OTHERWISE SPECIFIED,  
DIMENSIONS ARE IN INCHES.  
TOLERANCES ARE:  
DECIMALS ANGLES  
.XX: ±.01 [.3] 2°  
.XXX: ±.005 [.13]  
.XXXX: ±.0020 [.051]

**PROPRIETARY NOTE**  
THIS DOCUMENT CONTAINS CONFIDENTIAL AND  
PROPRIETARY INFORMATION AND ALL DESIGN,  
MANUFACTURING, REPRODUCTION, USE, PATENT RIGHTS  
AND SALES RIGHTS ARE EXPRESSLY RESERVED BY SAMTEC,  
INC. THIS DOCUMENT SHALL NOT BE DISCLOSED, IN WHOLE  
OR PART, TO ANY UNAUTHORIZED PERSON OR ENTITY NOR  
REPRODUCED, TRANSFERRED OR INCORPORATED IN ANY  
OTHER PROJECT IN ANY MANNER WITHOUT THE EXPRESS  
WRITTEN CONSENT OF SAMTEC, INC.

**MATERIAL:** DO NOT SCALE DRAWING  
INSULATOR: LCP, COLOR: BLACK  
CONTACT: PHOSPHOR BRONZE

SHEET SCALE: 2:1

**DESCRIPTION:**  
.100 SINGLE INTERFACE BEAM ASSEMBLY

**DWG. NO.**  
SIB-1XX-XX-XX-S-XX-XX

**BY:** DEAN P 9/20/2000 **SHEET 1 OF 2**

FIG 2  
SIB-120-02-X-S-E SHOWN

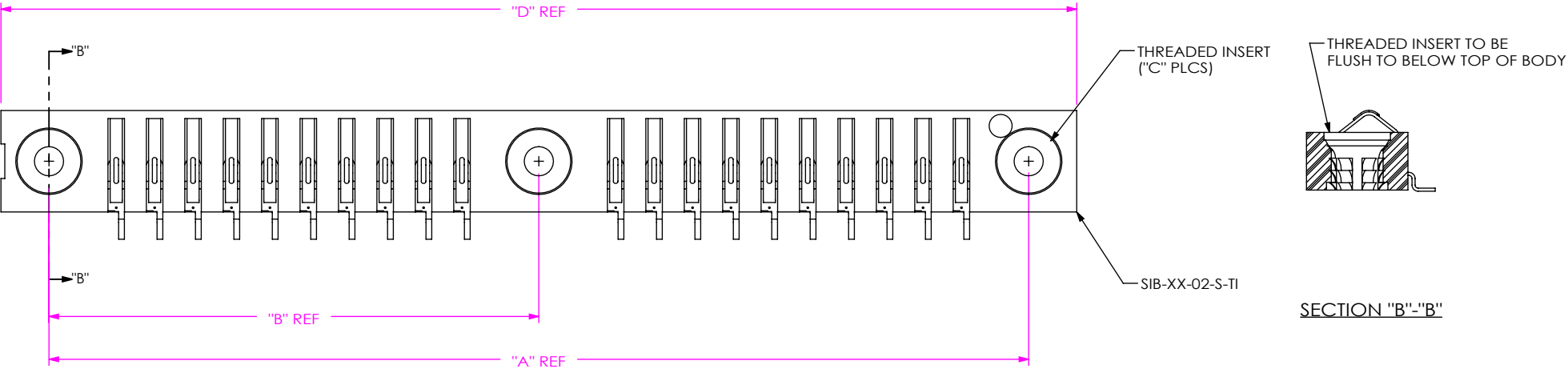
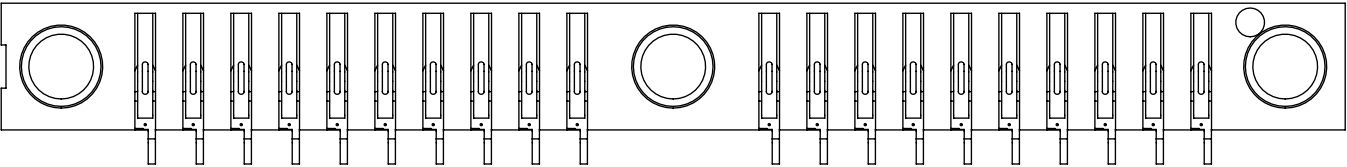
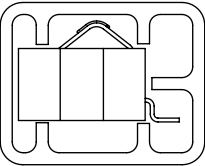


FIG 3  
SIB-120-02-X-S-TI SHOWN



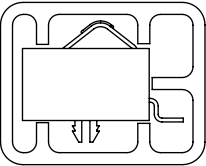
**PACKAGING VIEW**  
(PARTS TO HAVE POSITION #1 LOADED IN  
SAME DIRECTION AS ARROW ON TUBE)

NO -LC OPTION



TUBE: PT-1-24-01-118  
PLUG: TP-03

-LC OPTION



TUBE: PT-1-24-01-118  
PLUG: TP-03

TABLE 1: THREADED INSERT OPTION				
POS	"A"	"B"	"C"	"D"
-05	.750[19.05]	N/A	2	1.000[25.40]
-10	1.250[31.75]	N/A	2	1.500[38.10]
-15	1.750[44.45]	N/A	2	2.000[50.80]
-20	2.550[64.77]	1.275[32.39]	3	2.800[71.12]
-25	3.050[77.47]	1.475[37.47]	3	3.300[83.82]

F:\DWG\MISC\MKTG\SIB-1XX-XX-XX-S-XX-XX-MKT.SLDDRW

**PROPRIETARY NOTE**

THIS DOCUMENT CONTAINS CONFIDENTIAL AND PROPRIETARY INFORMATION AND ALL DESIGN, MANUFACTURING, REPRODUCTION, USE, PATENT RIGHTS AND SALES RIGHTS ARE EXPRESSLY RESERVED BY SAMTEC, INC. THIS DOCUMENT SHALL NOT BE DISCLOSED, IN WHOLE OR PART, TO ANY UNAUTHORIZED PERSON OR ENTITY NOR REPRODUCED, TRANSFERRED OR INCORPORATED IN ANY OTHER PROJECT IN ANY MANNER WITHOUT THE EXPRESS WRITTEN CONSENT OF SAMTEC, INC.

DO NOT SCALE DRAWING

SHEET SCALE: 2.5:1

**samtec**

520 PARK EAST BLVD, NEW ALBANY, IN 47150  
PHONE: 812-944-6733 FAX: 812-948-5047  
e-Mail: info@SAMTEC.com code 55322

DESCRIPTION:  
.100 SINGLE INTERFACE BEAM ASSEMBLY

DWG. NO.  
**SIB-1XX-XX-XX-S-XX-XX**

BY: DEAN P 9/20/2000 SHEET 2 OF 2