

ABSOLUTE MAXIMUM RATINGS

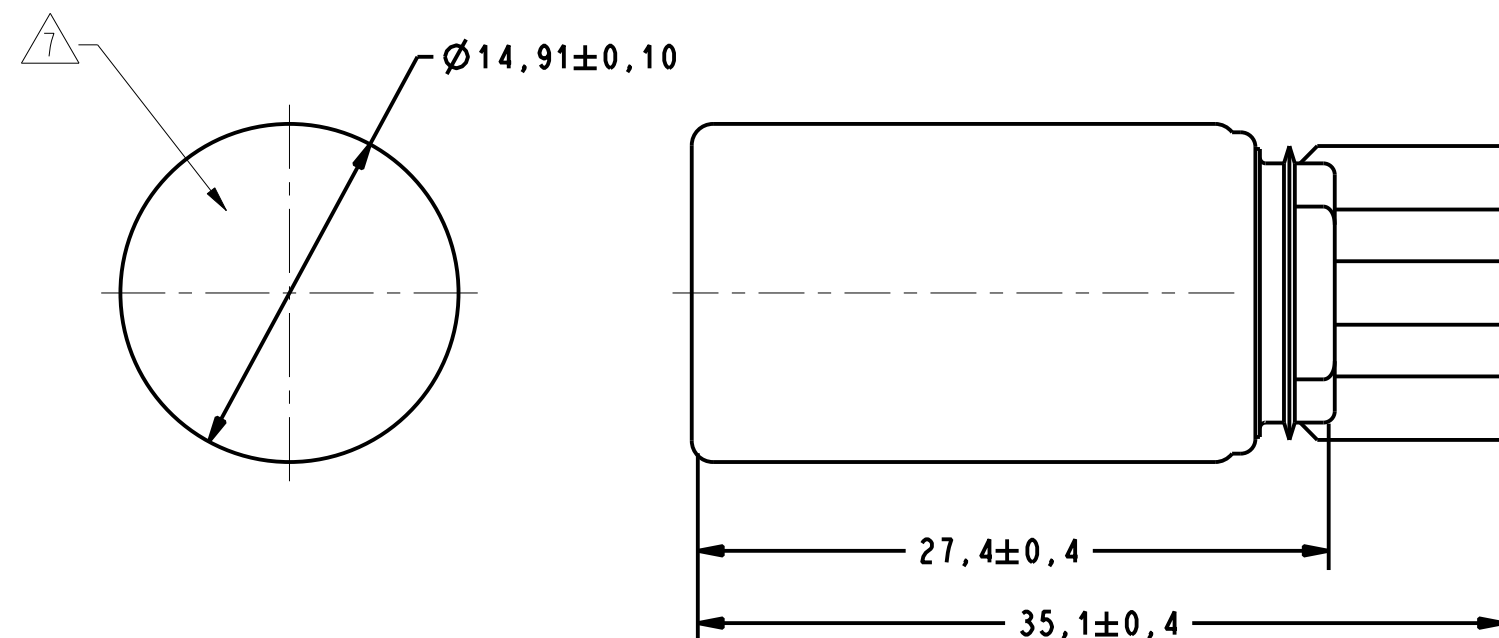
SUPPLY VOLTAGE	+30V CONTINUOUS
VOLTAGE EXTERNALLY APPLIED TO OUTPUT	-0.5 TO +30V (OUTPUT HIGH)
OUTPUT CURRENT	40 mA SINKING
MIN RPM	3.5 RPM
TEMP	150°C

RECOMMENDED OPERATING CONDITIONS

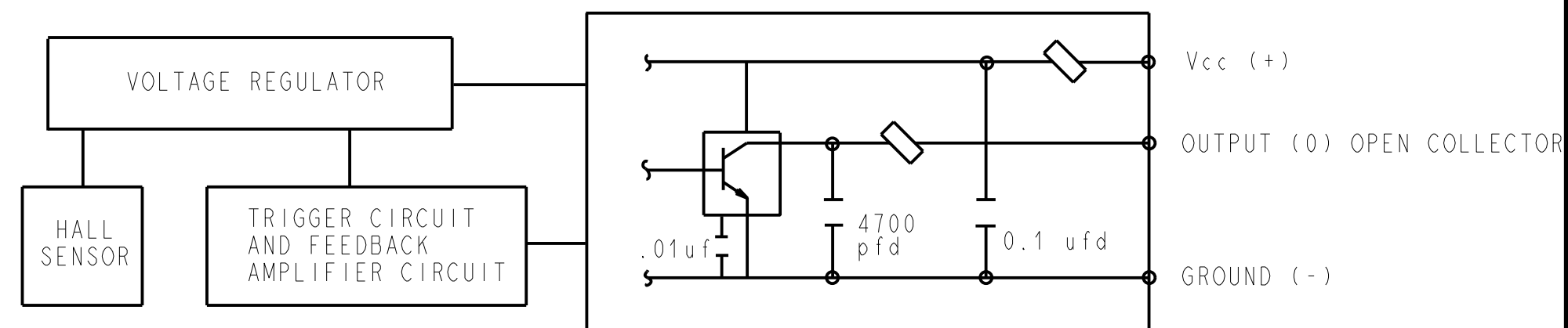
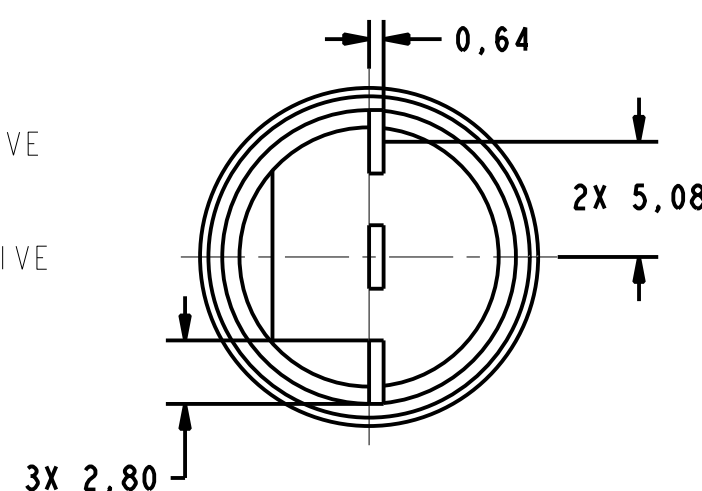
PARAMETER	CONDITIONS	MIN	TYP	MAX	UNITS
OPERATING TEMPERATURE		-40		+150	°C
SUPPLY VOLTAGE		4.5		24	VDC
SUPPLY CURRENT			10	20	mA
OUTPUT VOLTAGE	LOW OUTPUT			.6	VDC
OUTPUT CURRENT	LOW OUTPUT			20	mA
OUTPUT LEAKAGE CURRENT	HIGH OUTPUT			10	µA
RISE TIME	10% TO 90%			15	µS
FALL TIME	90% TO 10%			1.0	µS

OPERATING SPECIFICATIONS

	LIMIT	CONDITIONS	UNITS
OPERATING RELEASE	2.25 +/-1.25 2.25 +/-1.25	AIR GAP 1,0/2,0 TEMPERATURE 25°C RPM = 1000 Vsupply = 14 V	mm °C VOLTS %
PULSEWIDTH	45.8 - 57.6		



POSITIVE
NEGATIVE
OUTPUT



BLOCK DIAGRAM SHOWING CURRENT SINKING OUTPUT

- NOTES
- TARGET SHOULD BE MADE OF C-1018 STEEL OR ENGINEERING APPROVED EQUIVALENT, ANNEAL AFTER MACHINING OR FORMING
 - MAX LIMITS THAT SWITCH WILL WITHSTAND WITHOUT DAMAGE
 - OPERATING SPECIFICATION IS BASED ON TARGET SHOWN IN FIGURE 1 AND WILL VARY WITH TARGET GEOMETRY
 - OPERATE (DEGREES) IS THE ANGULAR DISTANCE FROM THE LEADING EDGE OF THE TOOTH TO THE CENTERLINE OF THE SENSOR
 - RELEASE (DEGREES) IS THE ANGULAR DISTANCE FROM THE TRAILING EDGE OF THE TOOTH TO THE CENTERLINE OF THE SENSOR
 - ELECTRICAL CHARACTERISTICS ARE GUARANTEED WITH MAX EXTERNAL LOAD CAPACITANCE < 550 pfd
 - AIR GAP IS THE DISTANCE FROM SENSOR FACE TO TARGET
 - CATALOG LISTING, DATE CODE AND SERIAL NUMBER LOCATED IN THIS AREA
 - RELIABILITY AND EMI PERFORMANCE IS BASED ON TS 060 234
 - FOR VALUE ADDED ASSEMBLY CONSIDERATIONS REFERENCE APPLICATION NOTE PK-80139



THIRD ANGLE PROJECTION
SCALE 3:8:1
DO NOT SCALE PRINT
UNLESS OTHERWISE SPECIFIED TOLERANCES ARE
NO PLACE (0) ± 1 MM
ONE PLACE (0,0) ± 0,4 MM
TWO PLACE (0,00) ± 0,15 MM
ANGLES ±
WEIGHT

Mouser Electronics

Authorized Distributor

Click to View Pricing, Inventory, Delivery & Lifecycle Information:

[Honeywell:](#)

[1GP5005](#)