

---

# AVR471: MC320 Getting Started Guide

## Kit Content

- 1 ATAVRMC300 Power stage board
- 1 ATAVRMC310 device board for ATmega32M1 AVR® microcontroller
- 1 Brushless DC motor
- 1 Mini-B to A USB cable
- 1 AVR DVD software and technical library
- 1 Dear customer letter

## 1 Overview

The MC320 kit is a complete hardware system which demonstrates motor control using ATmega32M1 and features CAN and LIN connectivity.

The MC300 is a general-purpose power stage board able to drive brushless DC, brushed DC and stepper motors. The board is designed to be a flexible platform for developing motor control applications.

The MC310 is the device board for ATmega32M1 AVR® microcontroller. It connects to the MC300.

The ATmega32M1 is the first AVR microcontroller of a new family dedicated to advanced motor-control applications.

The MC320 board can be used to start development of applications which need to drive motors in sensor or sensorless mode with accurate control of speed and torque.



8-bit **AVR**®  
Microcontrollers

Application Note

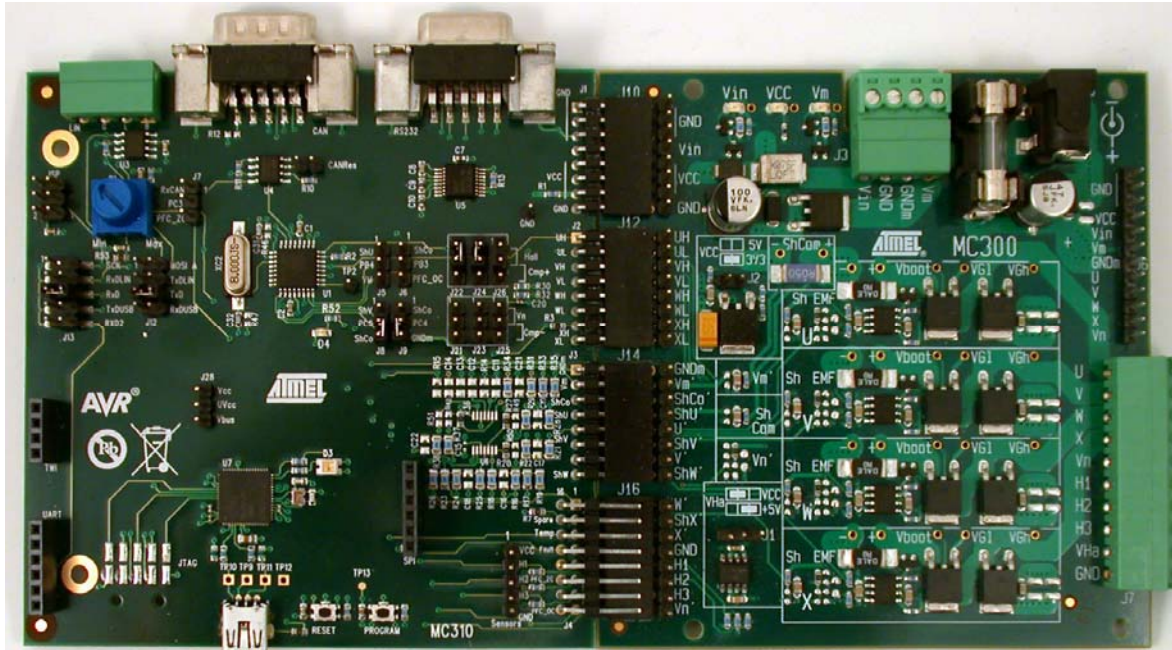
Rev. 8181A-AVR-11/08



## 2 Connecting the boards

The two boards must be connected as shown in Figure 2-1.

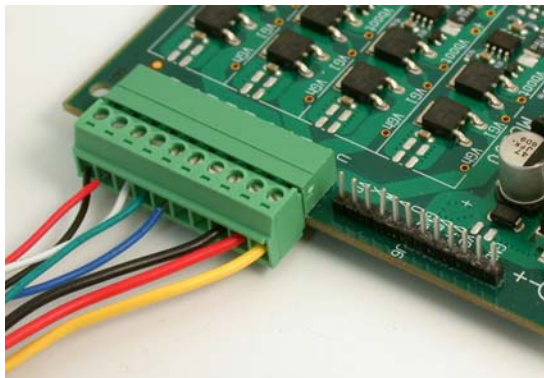
Figure 2-1. Power up the kit



## 3 Connecting the BLDC motor

The motor must be connected as shown in the Figure 3-1.

Figure 3-1. Connecting the BLDC motor



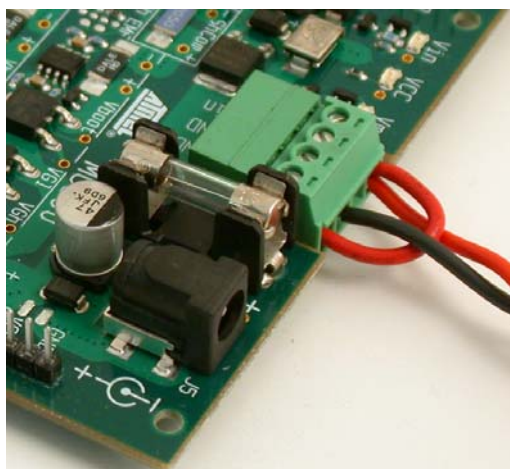
**Table 3-1. Signals**

J7 signals	Motor wires
U	Thick yellow
V	Thick red
W	Thick black
X	Not connected
Vn	Not connected
H1	Thin blue
H2	Thin green
H3	Thin white
VHa	Thin red
GND	Thin black

## 4 Powering the kit

The kit must be powered using J3 connector as shown Figure 3-1:

**Figure 4-1. Powering the kit**



**Table 4-1. Signals**

J3 signals	Power wires
Vin	Thick red (power)
GND	Not Connected
GNDm	Thick black (Ground)
Vm	Thick red (power)



Take care to connect Vin (Board supply) to Vm (Motor supply) together.

When powering using J5 jack connector, take care of the polarity as shown on the silk-screen.

Electrical characteristics:

- Vin: 10 – 20VDC coming from the Power board
- $I_{m_{min}} = 2A$

## 5 Default jumpers configuration

The following jumpers must be configured as below:

- J5, J6, J8, J9 : 2-3 jumper closed
- J21, J23, J25 : 1-2 jumper closed (Vn motor filtered)
- J22, J24, J26 : 1-2 jumper closed (Hall sensors 1, 2, 3)
- J12, J13 : 7-8 jumper closed (RxUSB, TxUSB selected)
- J7 : open (RxCAN)
- J15 : open (CAN Res)
- J28 : 1-2 jumper closed (Vcc-UVcc)

## 6 Default demo

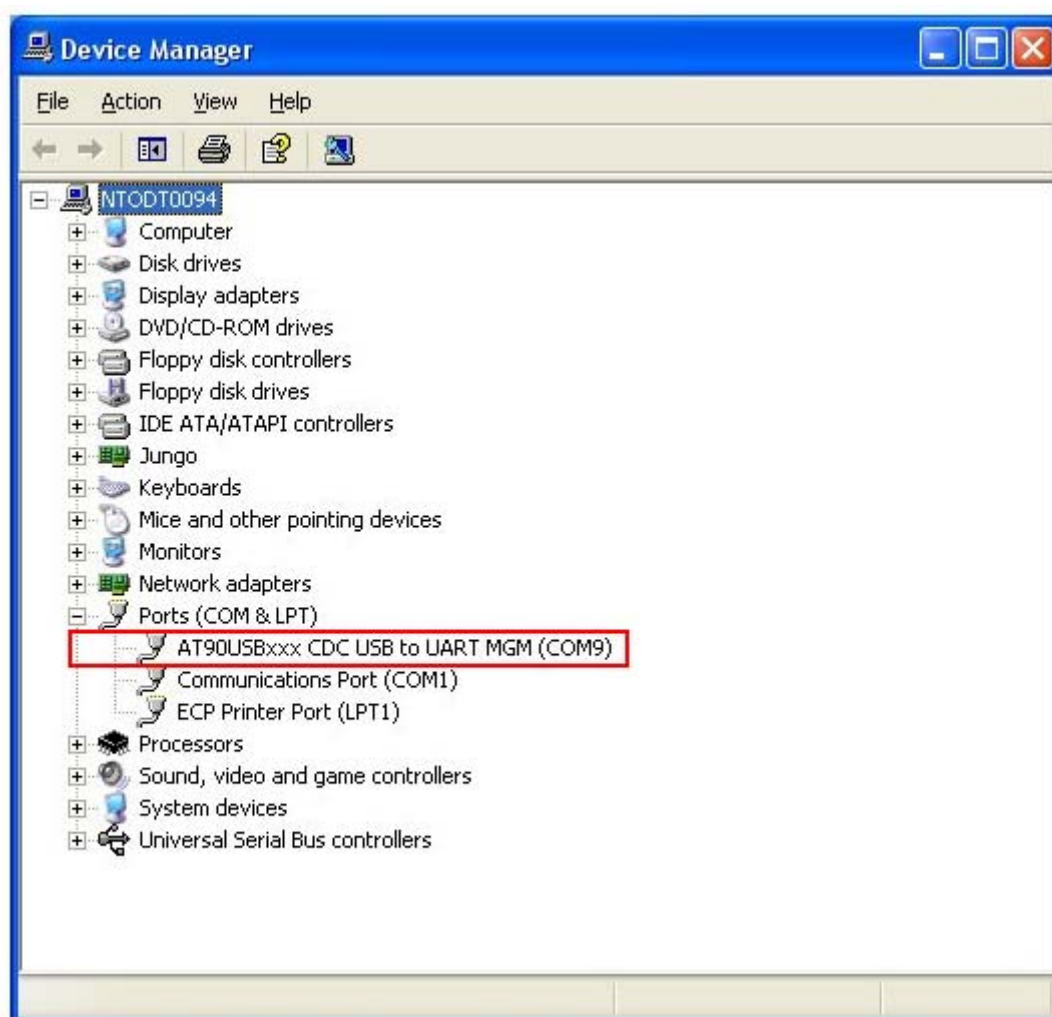
The MC320 kit is delivered already programmed with a sensor motor control demo. The potentiometer is used to control the motor speed.

Using the USB cable included in the kit with the Atmel Motor Control Center PC software, the user can drive the motor from the PC interface.

Note:

After connecting the USB cable between a PC & the MC320 kit, a new device detection wizard will appear, point the wizard to the .inf file at90usbxxx\_cdc.inf available on the MC320 kit Atmel web page. Check that your device is enumerated as a COM port (see picture below). Then you can use the USB interface of MC320 kit as a Virtual COM Port.

Figure 4-1. Device manager

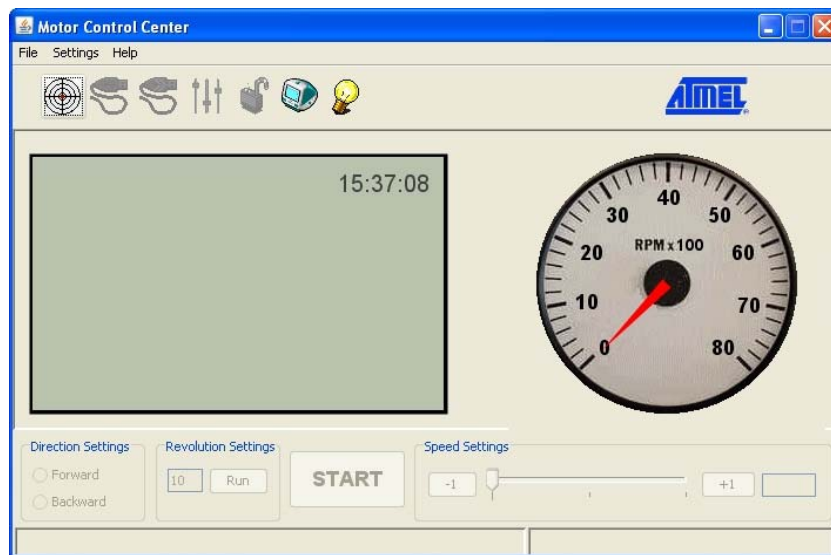


Atmel Control Center is available for free on Atmel Web site:

[http://www.atmel.com/dyn/products/tools\\_card.asp?tool\\_id=4170](http://www.atmel.com/dyn/products/tools_card.asp?tool_id=4170)



**Figure 4-2.** Device manager



If the COM port number is not listed in the communication drop down menu, type it explicitly in the window.

More detailed information can be found on MC300 & MC310 user's guides:

AVR430: MC300 User's guide

AVR470: MC310 User's guide



## Headquarters

**Atmel Corporation**  
2325 Orchard Parkway  
San Jose, CA 95131  
USA  
Tel: 1(408) 441-0311  
Fax: 1(408) 487-2600

## International

**Atmel Asia**  
Room 1219  
Chinachem Golden Plaza  
77 Mody Road Tsimshatsui  
East Kowloon  
Hong Kong  
Tel: (852) 2721-9778  
Fax: (852) 2722-1369

**Atmel Europe**  
Le Krebs  
8, Rue Jean-Pierre Timbaud  
BP 309  
78054 Saint-Quentin-en-  
Yvelines Cedex  
France  
Tel: (33) 1-30-60-70-00  
Fax: (33) 1-30-60-71-11

**Atmel Japan**  
9F, Tonetsu Shinkawa Bldg.  
1-24-8 Shinkawa  
Chuo-ku, Tokyo 104-0033  
Japan  
Tel: (81) 3-3523-3551  
Fax: (81) 3-3523-7581

## Product Contact

**Web Site**  
[www.atmel.com](http://www.atmel.com)

**Technical Support**  
[avr@atmel.com](mailto:avr@atmel.com)

**Sales Contact**  
[www.atmel.com/contacts](http://www.atmel.com/contacts)

**Literature Request**  
[www.atmel.com/literature](http://www.atmel.com/literature)

**Disclaimer:** The information in this document is provided in connection with Atmel products. No license, express or implied, by estoppel or otherwise, to any intellectual property right is granted by this document or in connection with the sale of Atmel products. **EXCEPT AS SET FORTH IN ATMEL'S TERMS AND CONDITIONS OF SALE LOCATED ON ATMEL'S WEB SITE, ATMEL ASSUMES NO LIABILITY WHATSOEVER AND DISCLAIMS ANY EXPRESS, IMPLIED OR STATUTORY WARRANTY RELATING TO ITS PRODUCTS INCLUDING, BUT NOT LIMITED TO, THE IMPLIED WARRANTY OF MERCHANTABILITY, FITNESS FOR A PARTICULAR PURPOSE, OR NON-INFRINGEMENT. IN NO EVENT SHALL ATMEL BE LIABLE FOR ANY DIRECT, INDIRECT, CONSEQUENTIAL, PUNITIVE, SPECIAL OR INCIDENTAL DAMAGES (INCLUDING, WITHOUT LIMITATION, DAMAGES FOR LOSS OF PROFITS, BUSINESS INTERRUPTION, OR LOSS OF INFORMATION) ARISING OUT OF THE USE OR INABILITY TO USE THIS DOCUMENT, EVEN IF ATMEL HAS BEEN ADVISED OF THE POSSIBILITY OF SUCH DAMAGES.** Atmel makes no representations or warranties with respect to the accuracy or completeness of the contents of this document and reserves the right to make changes to specifications and product descriptions at any time without notice. Atmel does not make any commitment to update the information contained herein. Unless specifically provided otherwise, Atmel products are not suitable for, and shall not be used in, automotive applications. Atmel's products are not intended, authorized, or warranted for use as components in applications intended to support or sustain life.

© 2008 Atmel Corporation. All rights reserved. Atmel®, Atmel logo and combinations thereof, AVR® and others, are the registered trademarks or trademarks of Atmel Corporation or its subsidiaries. Other terms and product names may be trademarks of others.

# Mouser Electronics

Authorized Distributor

Click to View Pricing, Inventory, Delivery & Lifecycle Information:

Atmel:

[ATAVRMC320](#) [ATAVRMC321](#)