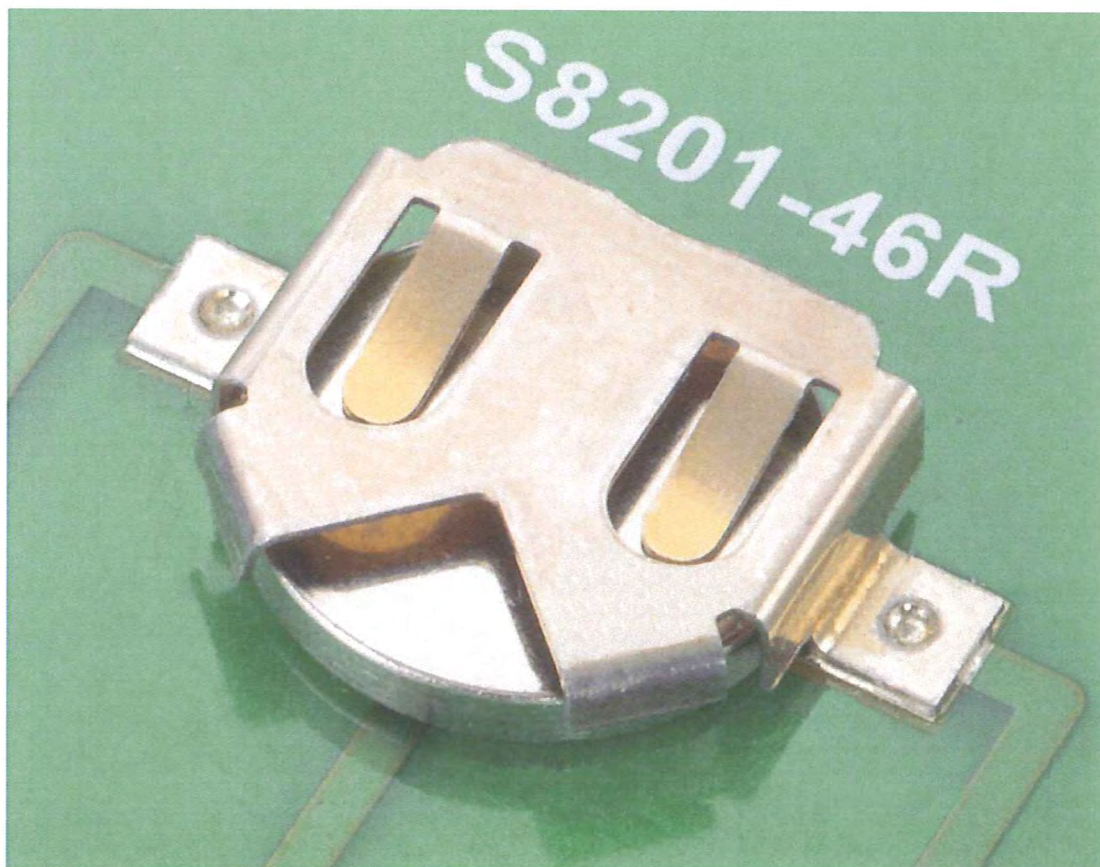


COMPONENT SPECIFICATION

HARWIN**EZ - Coin Cell Battery Retainers**

September 2010

1	Description of Retainers and Intended Application	2
2	Marking of Coin Cell and/or Package	2 - 3
3	Ratings	4
Appendix A	Test results - Vibration	5
Appendix B	Test results - Bump & Shock	8



Prepared By: R.Adde

Approved By:

C04301 Issue: 1 Change Note:- - - - Date: 30/09/2010

COMPONENT SPECIFICATION

**1. DESCRIPTION OF CONNECTOR AND INTENDED APPLICATION.**

The EZ Boardware range of surface mount coin cell retainers are available in a range of sizes to suit coin cells from CR1220 to CR2430. Manufactured in phosphor bronze for reliability and corrosion resistance. Designed for use in memory back-up and stand-by applications including:

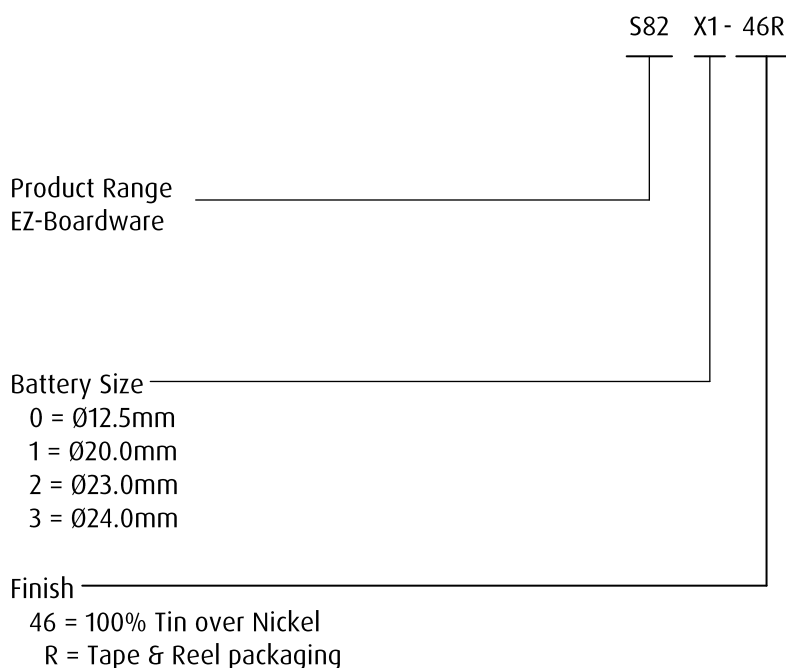
- Hand-Held devices
- Industrial computing
- On-board memory power supplies
- Medical equipment
- Set-top boxes

Connector Characteristics:

- Single piece, low profile SMT
- Dual spring contacts
- Polarity clearly marked
- Flow-hole solder pad design
- Tape & reel packaging complies with ANSI/EIA-481 standard
- Balanced and lightweight for pick and place processes

2. MARKING OF THE COIN CELL (ORDER CODE)

The marking (order code) shall appear on the package and shall be of the following style:



COMPONENT SPECIFICATION

HARWIN**3. RATINGS.****3.1 MATERIALS.**

Coin Cell Retainer

Phosphor Bronze, Tin Plate

3.2 ENVIRONMENTAL CHARACTERISTICS.

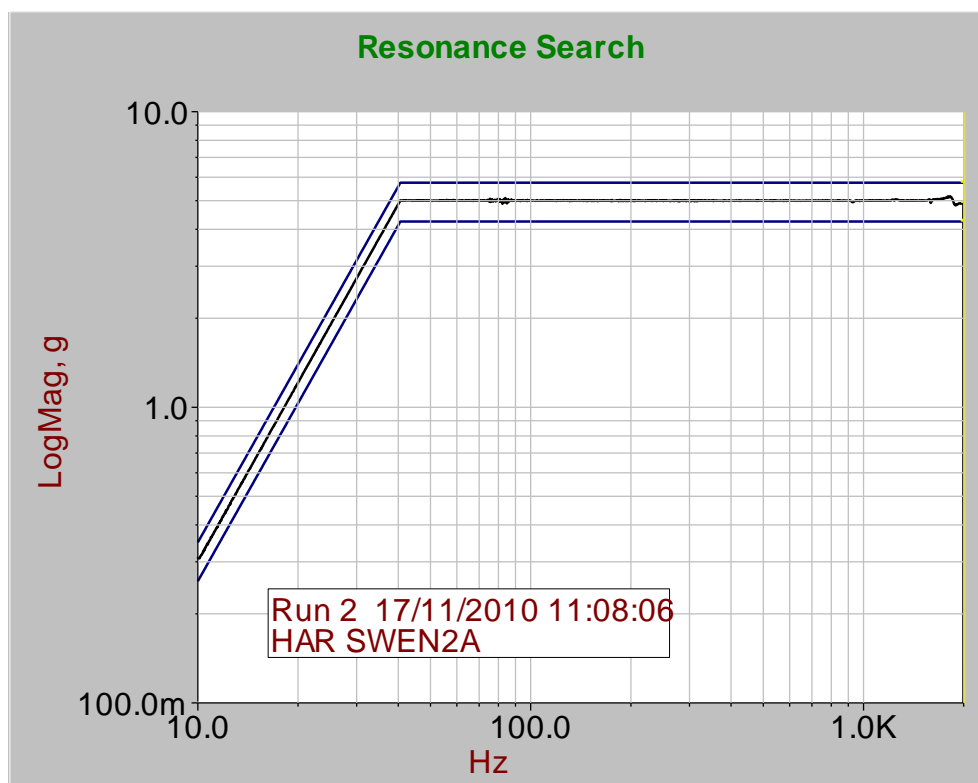
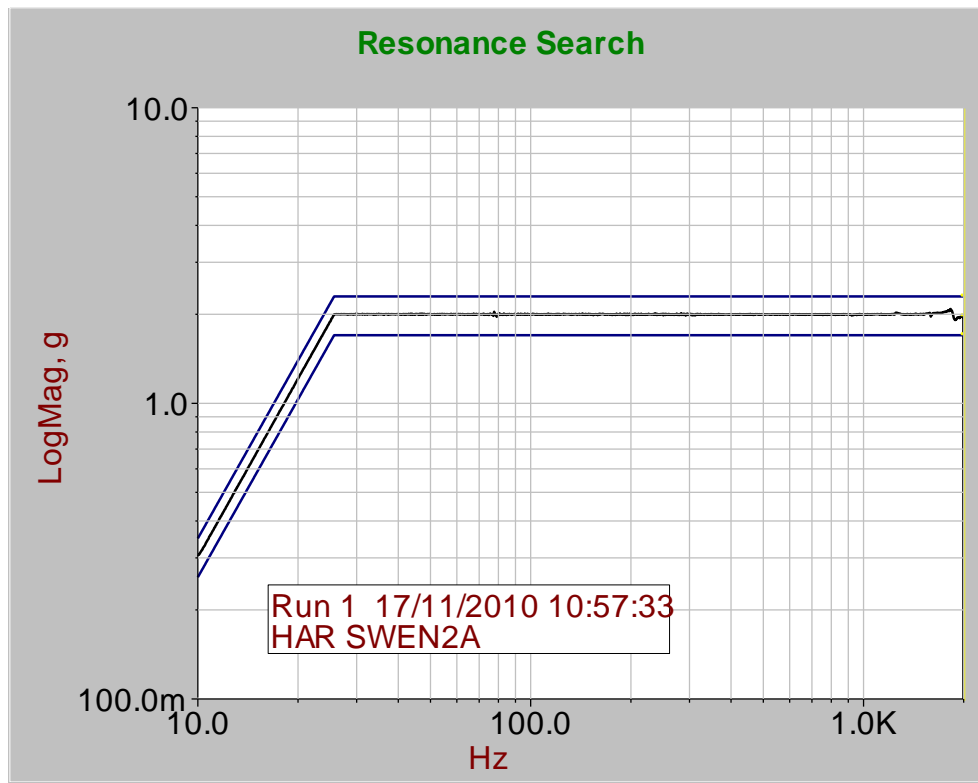
Operating temperature: -40°C to +105°C

Vibration: 10Hz to 2000Hz to 10Hz, 392m/s² (40G). See Appendix AMechanical Shock: 490m/s² (50G) 11.0ms, 3.4m/s half sine wave. See Appendix B

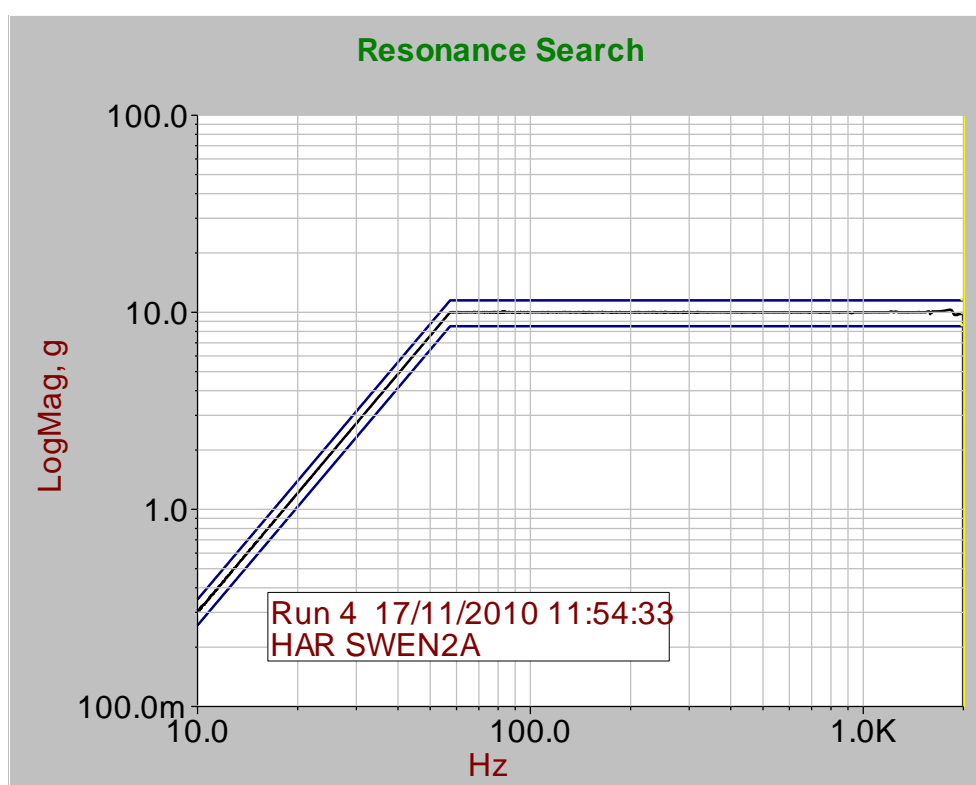
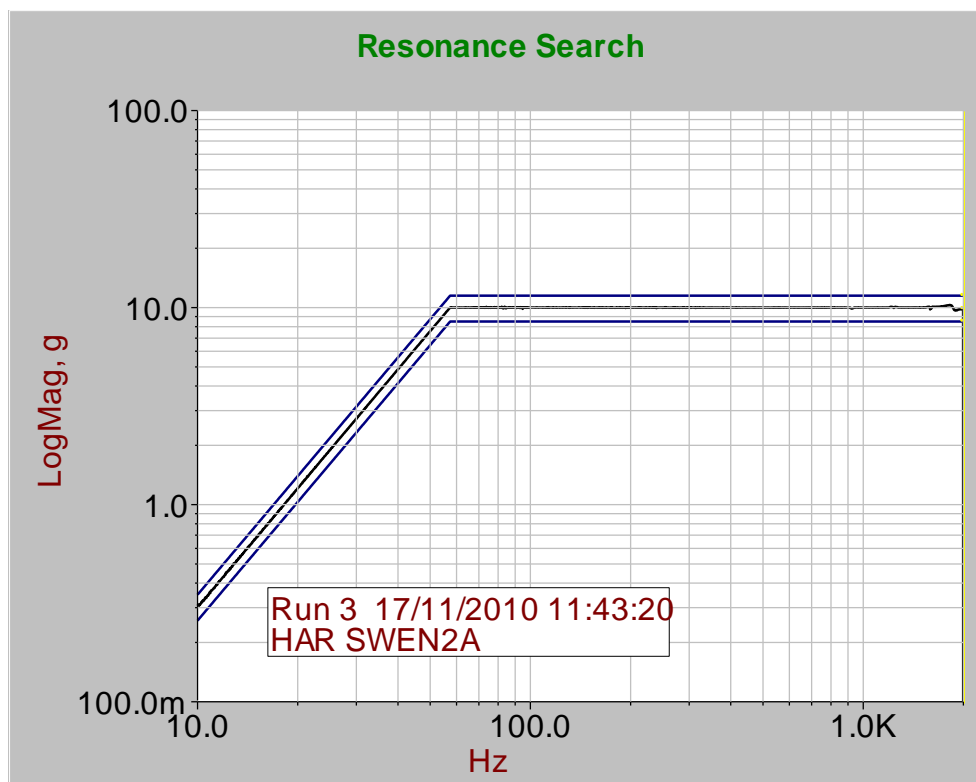
Durability: 50 cycles (Anticipated, full testing in progress)

HARWIN

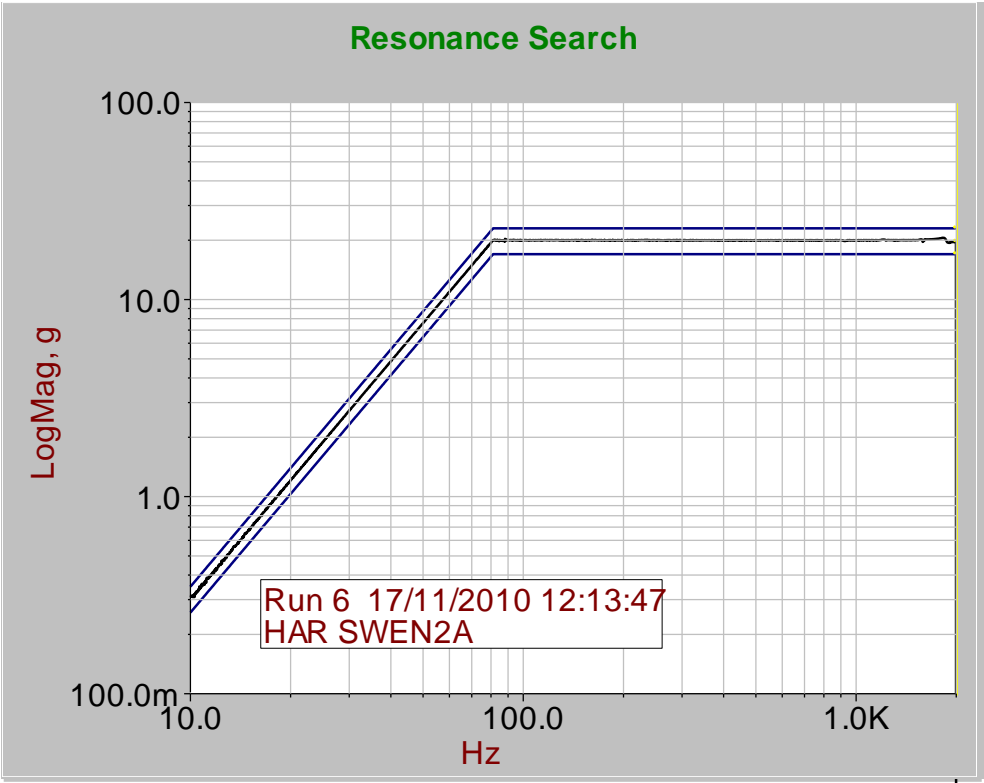
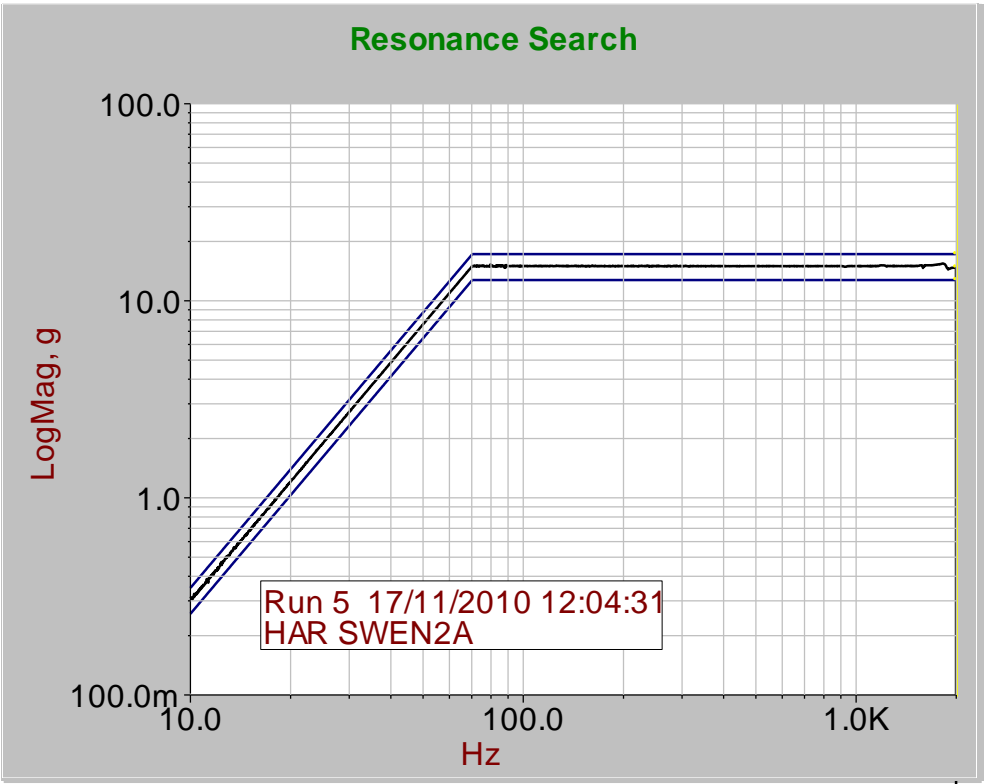
Shock and Vibration Continuity test results



Appendix A

HARWIN

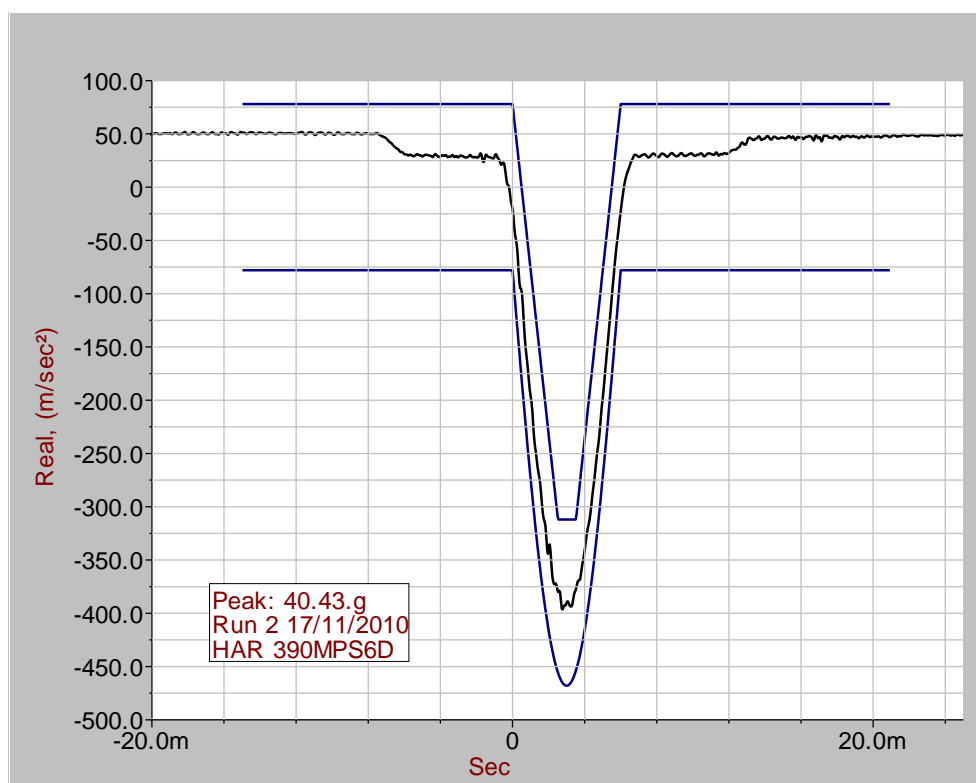
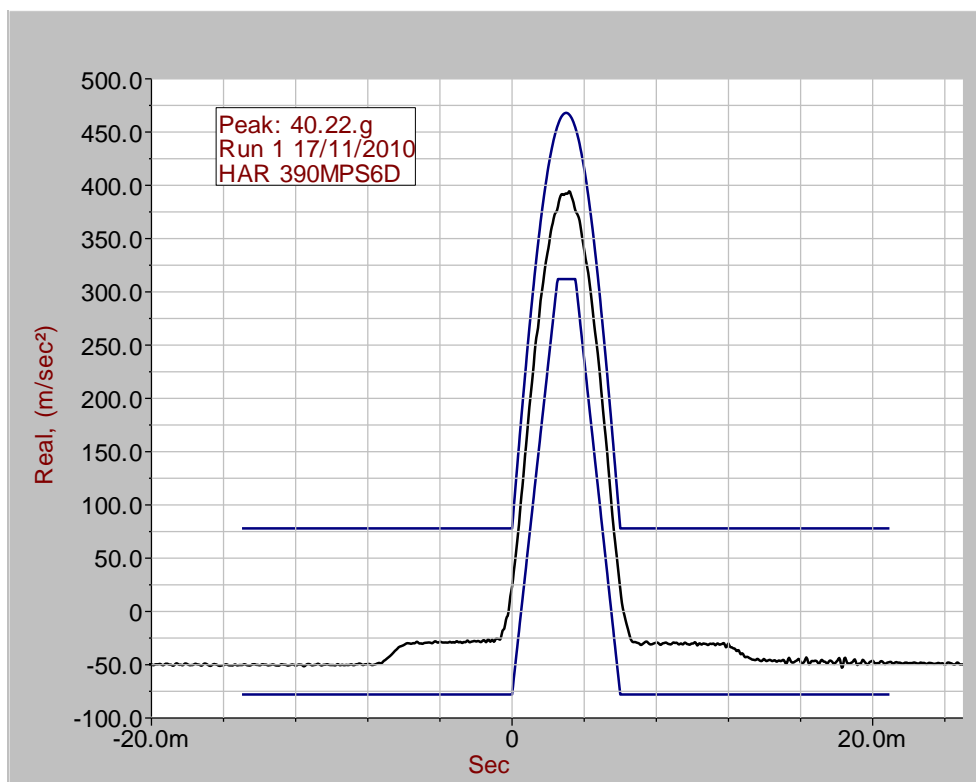
Appendix A



Appendix B

HARWIN

Bump shock test to 40G



Mouser Electronics

Authorized Distributor

Click to View Pricing, Inventory, Delivery & Lifecycle Information:

Harwin:

S8201-46R