



## MODULAR JACKS AND PLUGS: GWLX Series

Right Angle Modular Jack with LED, Tab Up

### Product Features

- Easy Viewing LEDs to Act as Power/Transmit Indicators
- Snap-In Retention Tabs
- Available Fully Shielded for EMI/RFI Protection
- Available Through Hole and Surface Mount
- CSA/NRTL Certified File No. LR78160
- UL File No. E134345

### Performance Specifications

#### Materials and Finish

##### Housing

##### Housing Material

High Temperature Thermoplastic

##### Shield Material

Copper Alloy, Nickel Plated

##### Contact Material

Phosphor Bronze

### Electrical Characteristics

#### Insulation Resistance

500 Megohms Min.

#### Contact Resistance

20 milliohms Max.

#### Current Rating

1.5A

#### Voltage Rating

125V DC

#### Operating Temperature

-40°C to +85°C

#### Durability Rating

500 Mating Cycles Min.

2D Drawing	IGES	STEP	3D PDF
Solder Profile	CofC RoHS Compliant	CofC REACH Compliant	UL Plastic File
Certificate of Origin	Check Stock	Request a Sample	Send Us An Email

### Generated Part Number

#### Part Number Builder

<input type="text"/>	-	<input type="text"/>	<input type="text"/>	<input type="text"/>	<input type="text"/>
Series		Shield Option	No. of Positions & Contacts	LED Color Option	Plating Option

#### Series

GWLX - Modular Jack with LED, Through Hole

#### Shield Option

- N - Non-Shielded
- S - Fully Shielded
- S2 - Fully Shielded with Side Ground Tabs
- S9 - Shielded with Top & Side Tabs

#### Number of Positions/Contacts

88 - 8 Positions / 8 Contacts

#### LED Color

- G/G - Left: Green, Right: Green
- Y/Y - Left: Yellow, Right: Yellow
- Y/G - Left: Yellow, Right: Green
- G/Y - Left: Green, Right: Yellow
- G/R - Left: Green, Right: Red

#### Plating Option

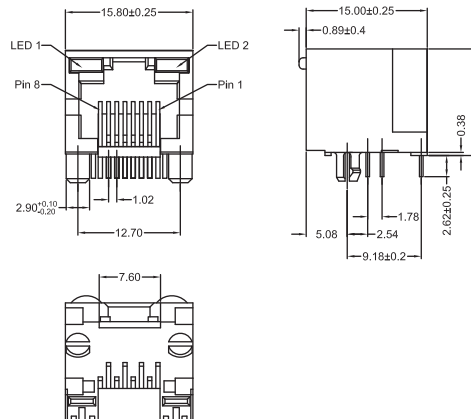
- Blank - Gold Flash
- 50 - 50µ" Gold Plating

Contact Kycon for Other Options

### GWLX Series

Dimensions in mm

#### GWLX-N-88-x-x



# Mouser Electronics

Authorized Distributor

Click to View Pricing, Inventory, Delivery & Lifecycle Information:

## Kycon:

[GWLX-S9-88-Y/G-50](#) [GWLX-S-88-G/Y](#) [GWLX-SMT-S988G/Y](#) [GWLX-S2-88-G/Y](#) [GWLX-S9-88-G/Y](#) [GWLX-S9-88-G/G](#) [GWLX-S-88-Y/G](#) [GWLX-SMT-S988G/G](#) [GWLX-S9-88-Y/G](#) [GWLX-S9-88-G/G-50](#) [GWLX-S-88-G/Y-50](#) [GWLX-S9-88-G/R](#) [GWLX-S-88-G/G](#) [GWLX-S-88-G/R](#) [GWLX-S9-88-G/Y-50](#) [GWLX-SMT-S988G/G50](#) [GWLX-SMT-S988Y/G](#) [GWLX-SMT-S988Y/G50](#) [GWLX-SMT-S988G/R](#) [GWLX-S2-88-G/Y-30](#) [GWLX-S-88-G/Y-30](#) [GWLX-S9-88-G/G-30](#) [GWLX-SMT-S988YG/YG](#) [GWLX-S9-88-GY/GY](#) [GWLX-S9-88-G/Y-30](#) [GWLX-S9-88-G/Y-15](#) [GWLX-S-88-G/G-30](#)