

**Product number** F12237\_OSLO-CLUSTER-W

Family	Oslo	FWHM	(simulated)
Type	Lens array	Efficiency	-
LED	XP-G	cd/Im	(simulated) 0.000
Color	Clear	Gerber File	Available
Diameter	26 mm		
Height	6.7 mm	Designed for Cluster arrays	
Style	Round		
Optic Material	PMMA		
Holder Material	-		
Fastening	Pin, glue		
Status	On production		

**NOTE:** The typical divergence will be changed by different color, chip size and chip position tolerance. The typical total divergence is the full angle measured where the luminous intensity is half of the peak value.



## PRODUCT DATASHEET

### Oslo series

last update 14/5/2014



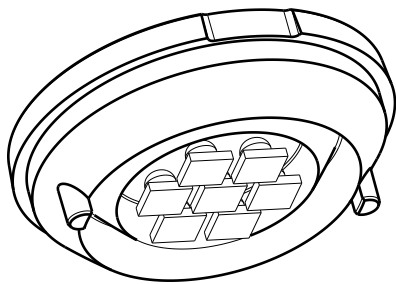
#### GENERAL INFORMATION

- Product series especially designed & optimized for XP-G series of LEDs.
- Special care taken to make light distribution as uniform as possible.
- Lens material optical grade PMMA with high UV and temperature resistance. Allows use of high current and temperature conditions.

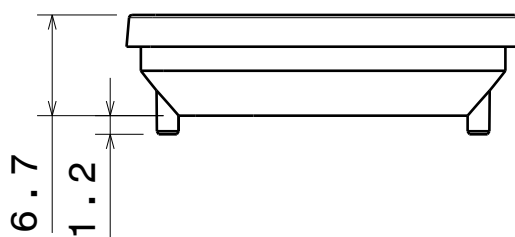
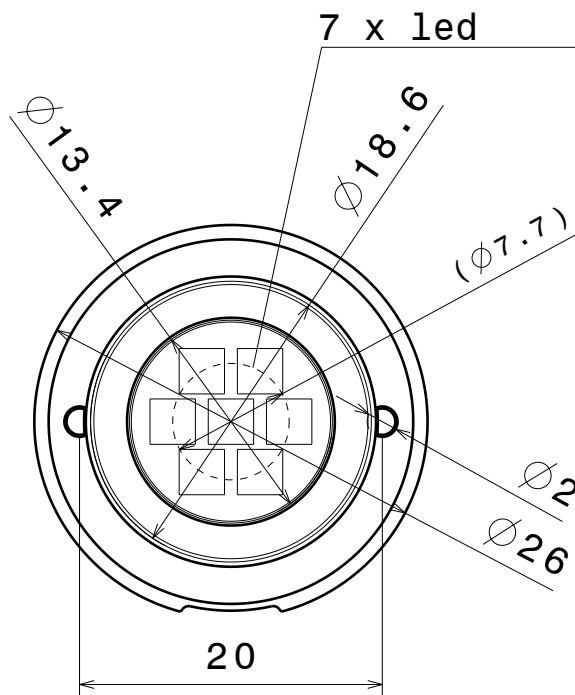
Please find more information about used material from below:

[http://ledil.fi/sites/default/files/Documents/Technical/Material/PMMA%20N%20UL94\\_Yellow%20Card.pdf](http://ledil.fi/sites/default/files/Documents/Technical/Material/PMMA%20N%20UL94_Yellow%20Card.pdf)

<http://ledil.fi/sites/default/files/Documents/Technical/Material/PMMA%20N%20PLEXIGLAS-Datasheet.pdf>



Isometric view  
Scale: 2:1



Material: PMMA  
Part no.s:  
F11355\_Oslo-Cluster-W-OSL  
F11355\_Oslo-Cluster-W-XP  
F11355\_Oslo-Cluster-W-RE  
F11355\_Oslo-Cluster-W-N119

This drawing is our property.  
It can't be reproduced  
or communicated without  
our written agreement.



L  
T  
F  
F

e  
e  
l  
i

N  
n

d  
h

#### DRAWING TITLE

Datasheet Oslo-Cluster-W Series

DRAWN BY

DATE

24.05.2010

CHECKED BY

DATE

24.05.2010

DESIGNED BY

DATE

24.05.2010

SIZE

A4

DRAWING NUMBER

F11355

REV

1

SCALE

2:1

WEIGHT (g)

SHEET

1/1

D

A