

### SPECIFICATIONS

**Material:** HEXSEALS: Silicone rubber conforms to A-A-59588 Class 3, GR 50 unless otherwise specified.

**Mounting Nut:** HEXSEALS: Brass, nickel-plated (unless otherwise noted)

**Temperature Range:** HEXSEALS: -94°F to +400°F

**Pressure Range:** Exceeds 15 psi internal and 1500 psi external.

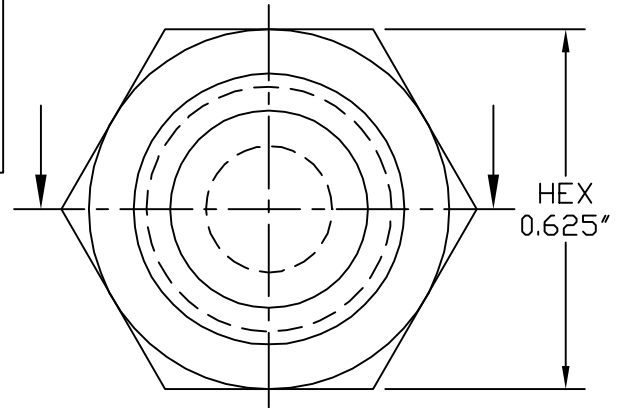
**Operational Life:** 50,000 actuations (minimum).

**Shelf Life:** Excess of 25 years.

**Resistant to:** Salt spray, sunlight, ozone, weather, fungus, and most acids and lubricating oils

**Agency Recognition:** E-SEELS and HEXSEALS are UL-listed to UL Std. 50 types 1-13, and meet CSA standards.

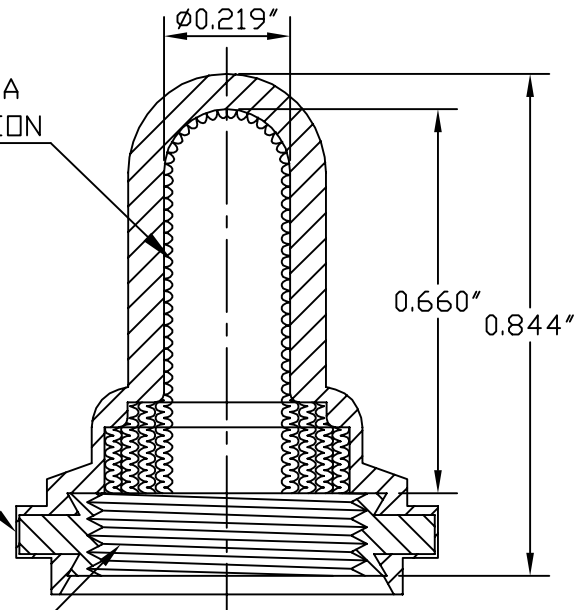
**Installation:** If a reducing adaptor is required - see page 14 of HEXSEAL catalog HEX200 for part numbers and drawing.



MONEL MESH  
PER QQ-N-281 CLASS A  
FOR EMI/RFI SUPPRESSION

PERMISSIBLE RUBBER  
OVERLAY 0.005 MAX.

15/32-32NS-2B



F	MAT'L CHANGED and REDRAWN				S. GOK	09.28.09
E	CAD COMPUTER GENERATED					09.23.02
D	UPDATED and REDRAWN				R.C.	07.14.76
REV.	DESCRIPTION					DATE
MAXIMUM AND MINIMUM MEASUREMENTS ARE STATED DIRECTLY ON EACH DIMENSION.	TITLE:	EMI/RFI SHIELDED BOOT, TOGGLE, SWITCH (IN-1030 RFI)		ENG.	S. GOK	09.28.09
				DWN.	N.K. STEIGER	08.30.65
				CHKD.	J. CELLA	09.28.09
MAT'L: Silicone Rubber A-A-59588, Gr.50		APM-HEXSEAL CORPORATION	SCALE 3 : 1	DWG. NO.	(IN-1030 RFI) HEXSEAL®	
FINISH: GRAY						

THIS DRAWING COVERS PROPRIETARY ITEM AND IS THE PROPERTY OF THE APM-HEXSEAL CORPORATION.  
THIS DRAWING IS NOT TO BE COPIED OR USED WITHOUT THE WRITTEN APPROVAL OF AN OFFICER OF THE APM-HEXSEAL CORPORATION.

# Mouser Electronics

Authorized Distributor

Click to View Pricing, Inventory, Delivery & Lifecycle Information:

[APM HEXSEAL:](#)

[IN1030 RFI](#)