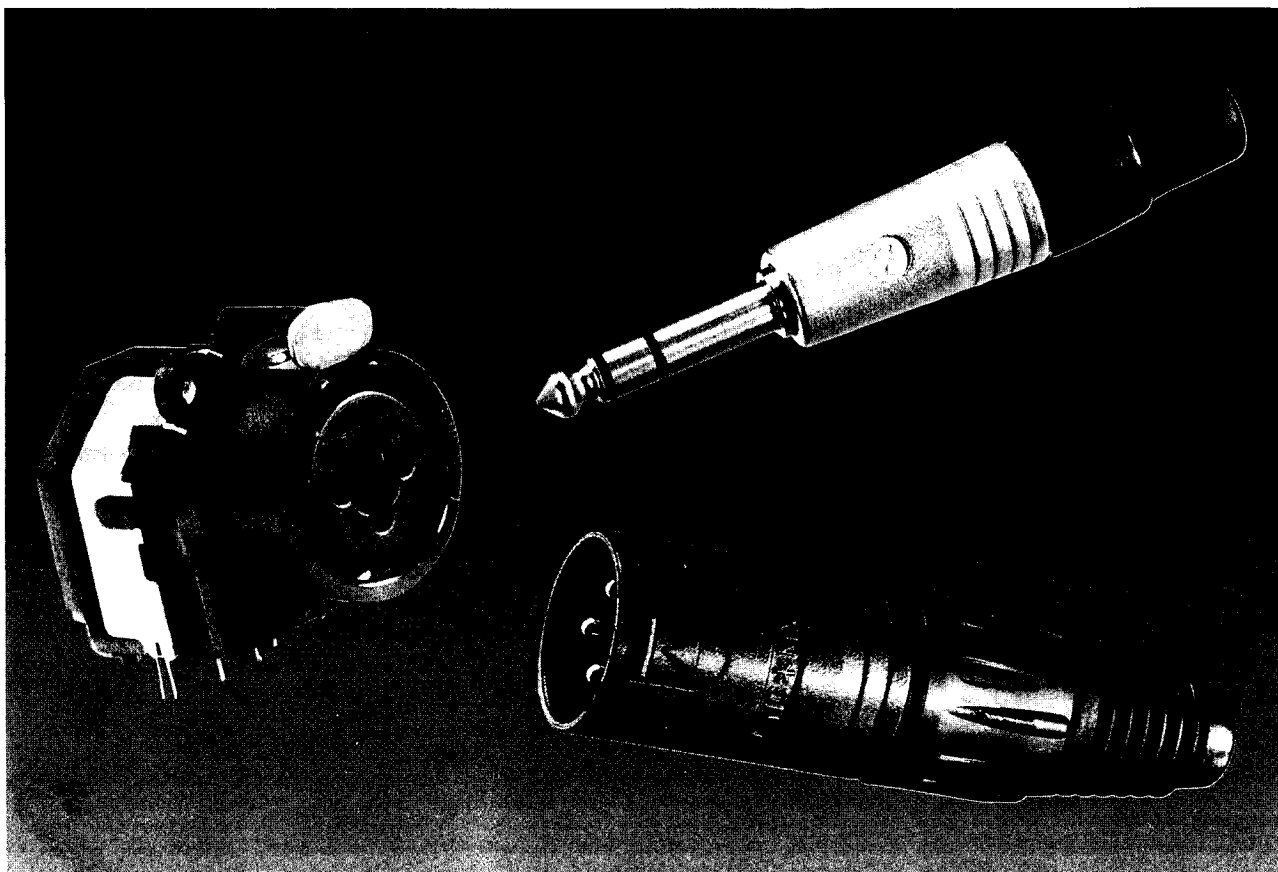


# **Combo**

## **Combined XLR - Jack - Receptacle**



- Combined 3 pole XLR and 1/4" Jack for balanced and line inputs or musical instruments in one XLR - shell.
- Space saving, both on the PCB and on the enclosure.
- Cost saving, XLR receptacle and a good reliable Jack all in one for the cost of a "D-Type" XLR.
- Labor saving, insertion of one piece only. The unique side brackets provide a strong mechanical connection between the PCB and the chassis/enclosure.
- Compatible with Neutrik K-Series, Cannon XLB-Series and Switchcraft PQG-Series.
- High retention force and low contact pressure for the jack-, locking or non-locking XLR-retention.



# **NEUTRIK**

**CONNECTING THE WORLD**

CONNECTORS  
AUDIO TEST SYSTEMS  
INFOMATIC SYSTEMS

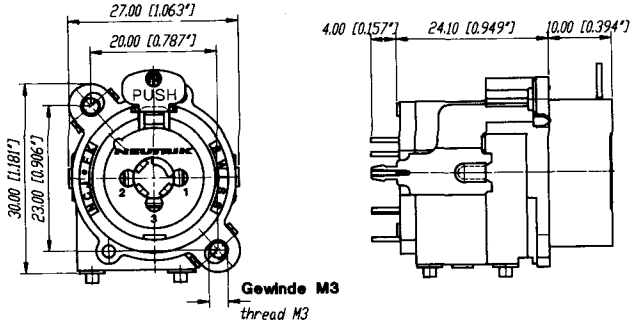
# Specification and Technical Data

## Dimensional Drawings

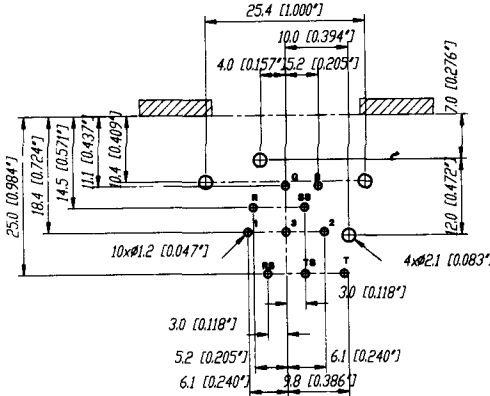
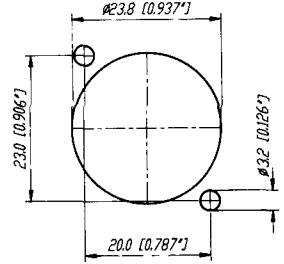
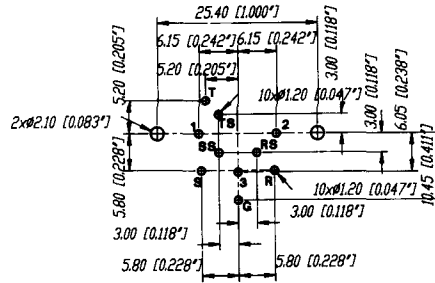
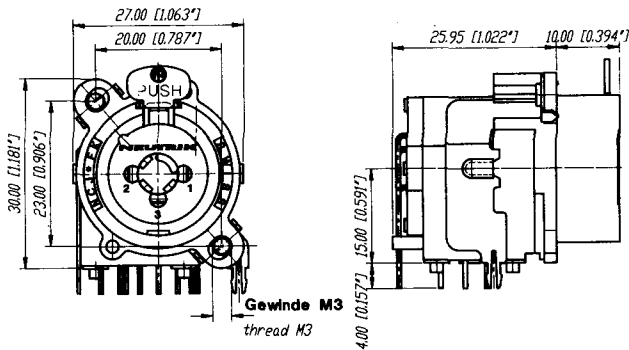
## Footprints

## Panel cut outs (front side)

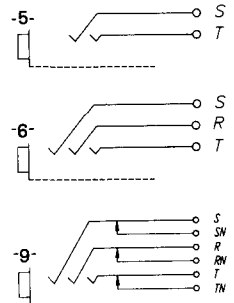
### NCJ6FK-V



### NCJ6FK-H



## Circuits



## MATERIALS

**Shell:** Polyamid, PA 6.6 30% gr

**Brackets:** CuSn6, Nickel Plated

**Contacts of Jack and XLR:** CuSn6

**Contact Area:** gold plated

**Operating Temperature Range:** -20 - +65° C

## ELECTRICAL

**Contact Resistance:** ≤3mΩ per Contact (XLR and Jack)

**Capacity:** XLR: ≤3pF, Jack: ≤5pF

**Current contact rating:** 7.5A intermittent duty cycle 10%

**Dielectric withstanding Voltage:** 1500 VDC

**Rated Voltage:** 250 VAC

**Insulation Resistance:** after Salt Mist and Damp Heat Test

(IEC 68-2-11 / 68-2-30): ≥10<sup>8</sup> Ω

## MECHANICAL

**Insertion/withdrawal force:** depends on mating connectors

**Solderability complies with:** IEC 68-2-20

## Additional Features

Most of today's consoles and amplifiers are furnished with two input receptacles per channel: a balanced 3-pole XLR and a 1/4" phone jack. In almost all cases only one of the inputs is -or should be- used at a time. Neutrik -the connector innovators- discovered the problem and found the solution: The NCJ\*FK-Series.

Metal brackets on both sides of the connector with M3-threads at the front end and snap-in locks at bottom -or rear- end provide a firm mechanical link between the board and the chassis. The front end of the bracket has a sharp toothlike spike providing an electrical connection between the housing and chassis ground on the PCB if desired.

The retention force -another Neutrik innovation on it's Jacks- is delivered by a special retention element completely separated from the contacts. The low capacity of these connectors makes them also suitable for transmission of digital audio. Horizontal or vertical PCB mounting, switching or non switching, stereo and mono version, with or without latch, compatible to Neutrik K-Series, XLB and PQG connectors.

## Ordering Information

**Receptacle, 3 Pole female XLR/ nonswitching mono-jack (T/S):**

Vertical NCJ5FK-V Horizontal NCJ5FK-H

**Receptacle, 3 Pole female XLR/ nonswitching stereo-jack (T/R/S):**

Vertical NCJ6FK-V Horizontal NCJ6FK-H

**Receptacle, 3 Pole female XLR/ switching (normalling) stereo-jack:**

Vertical NCJ9FK-V Horizontal NCJ9FK-H

**Retention spring instead of latch:** add suffix -O

**Distance Ring:** NDC (for flush mounted shell)

**NEUTRIK**

**CONNECTING THE WORLD**

REPRESENTED AND SERVICED BY:

NEUTRIK AG  
Liechtenstein  
Tel 075 / 237 24 24  
Fax 075 / 232 53 93

NEUTRIK USA INC.,  
USA  
Tel 908 / 901 9488  
Fax 908 / 901 9608

NEUTRIK UK Ltd.  
United Kingdom  
Tel 09 83 / 81 14 41  
Fax 09 83 / 81 14 39

NEUTRIK Zürich AG  
Switzerland  
Tel 01 / 734 0400  
Fax 01 / 734 3891