

**Product number C10446\_CUTE-4-SS**

Family	Cute	FWHM	11 degrees
Type	Lens array	Efficiency	88 %
LED	XR-E	cd/Im	13.200
Color	Clear	Gerber File	Available
Diameter	35 mm		
Height	15 mm		
Style	Round		
Optic Material	PMMA		
Holder Material	-		
Fastening	["glue", "pin"]		
Status	Production ready		

**Product number C10447\_CUTE-4-M**

Family	Cute	FWHM	18 degrees
Type	Lens array	Efficiency	84 %
LED	XR-E	cd/Im	4.260
Color	Clear	Gerber File	Available
Diameter	35 mm		
Height	15 mm		
Style	Round		
Optic Material	PMMA		
Holder Material	-		
Fastening	["pin", "glue"]		
Status	Production ready		

**NOTE: The typical divergence will be changed by different color, chip size and chip position tolerance. The typical total divergence is the full angle measured where the luminous intensity is half of the peak value.**



## PRODUCT DATASHEET

### Cute series

last update 26/6/2013

#### GENERAL INFORMATION

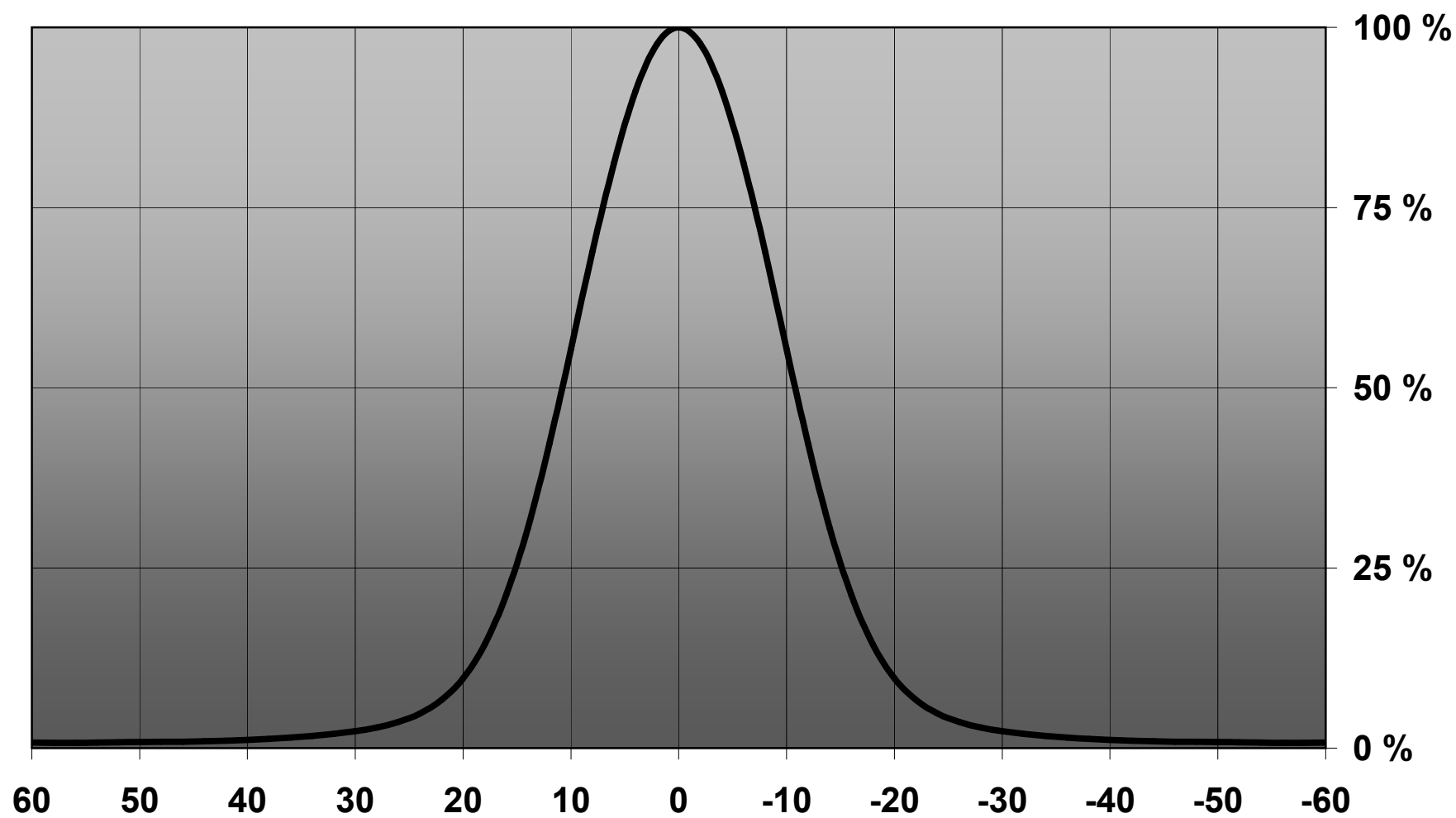
- Product series especially designed & optimized for XR-E series of LEDs.
- Special care taken to make light distribution as uniform as possible.
- Lens material optical grade PMMA with high UV and temperature resistance. Allows use of high current and temperature conditions.

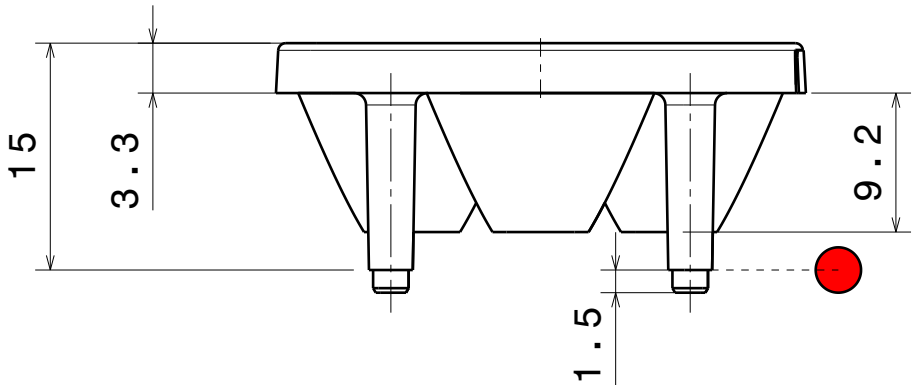
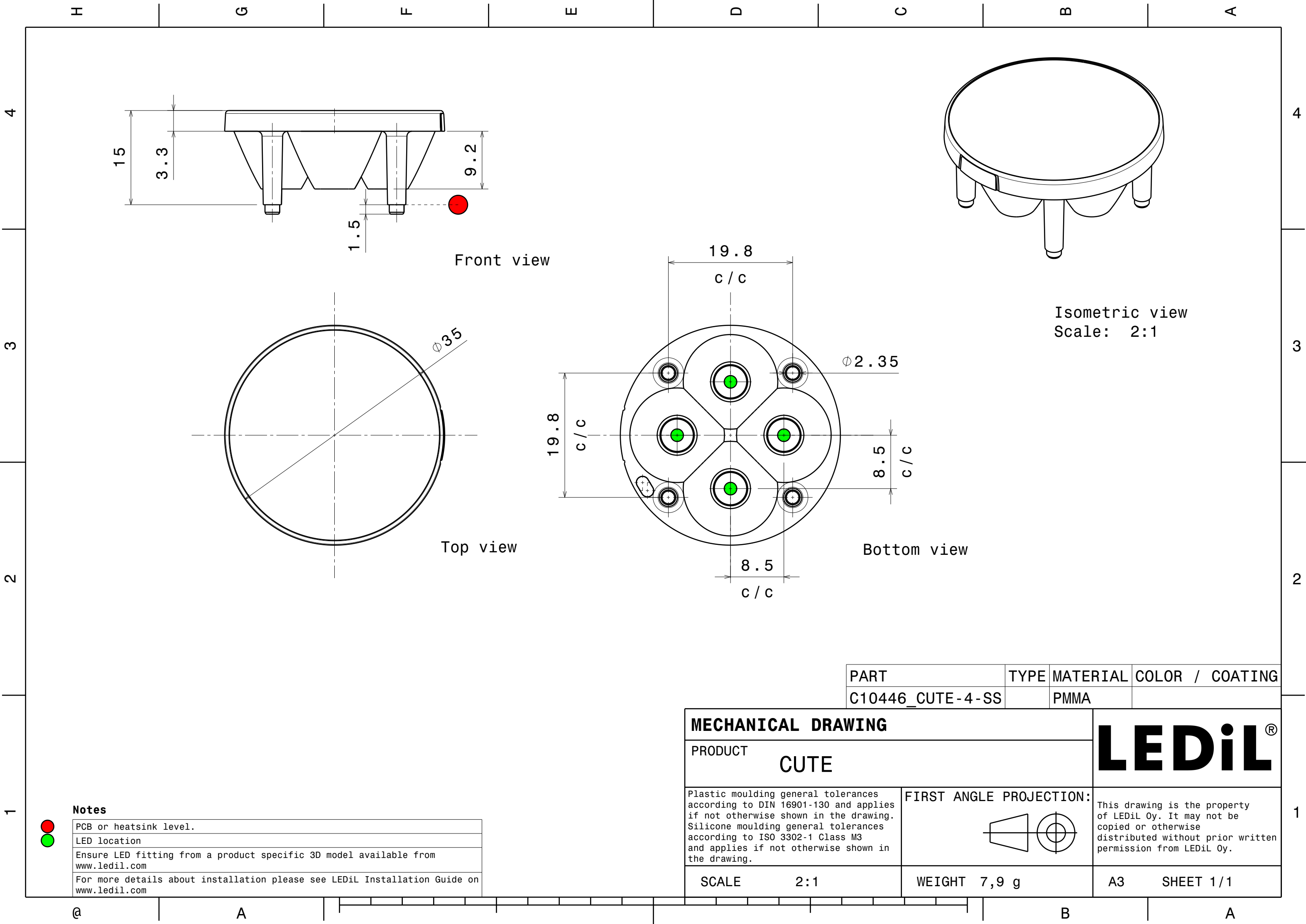
Please find more information about used material from below:

[http://ledil.fi/sites/default/files/Documents/Technical/Material/PMMA%20N%20UL94\\_Yellow%20Card.pdf](http://ledil.fi/sites/default/files/Documents/Technical/Material/PMMA%20N%20UL94_Yellow%20Card.pdf)

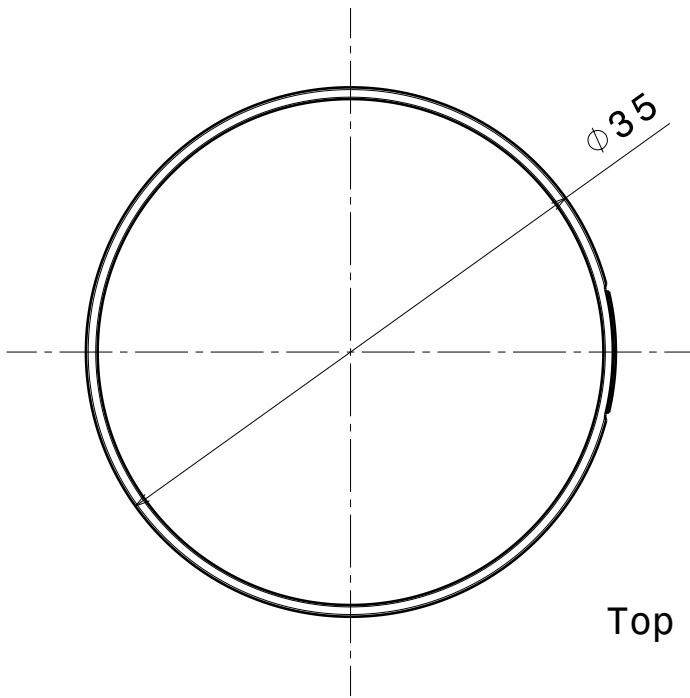
<http://ledil.fi/sites/default/files/Documents/Technical/Material/PMMA%20N%20PLEXIGLAS-Datasheet.pdf>

**Relative intensity of C10447\_Cute-4-M**

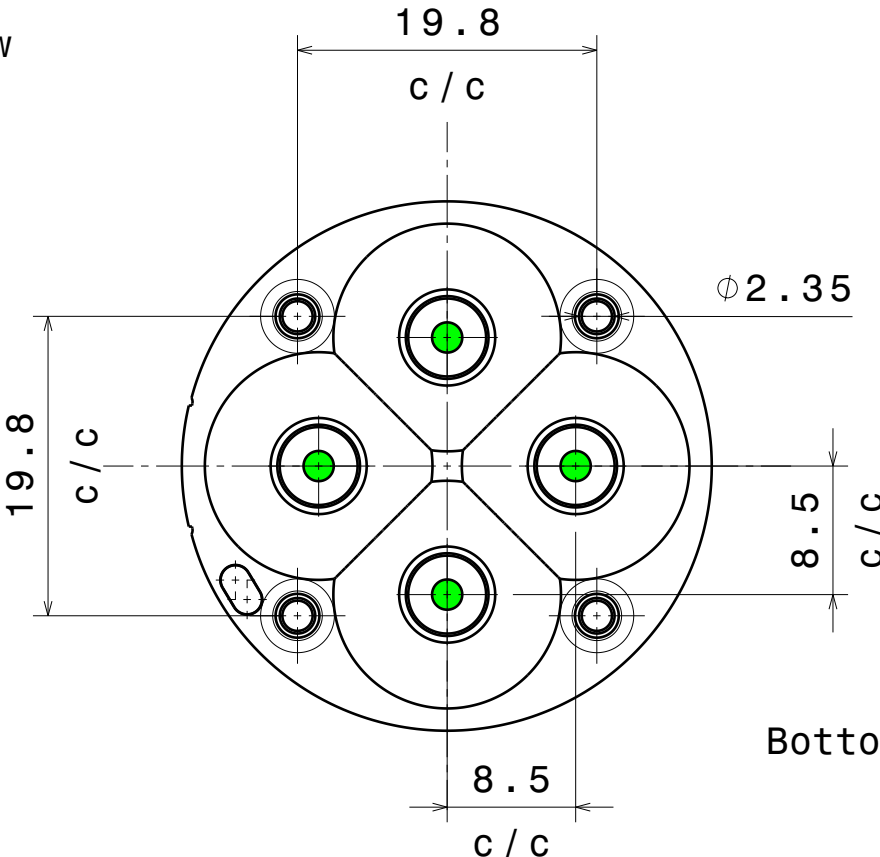




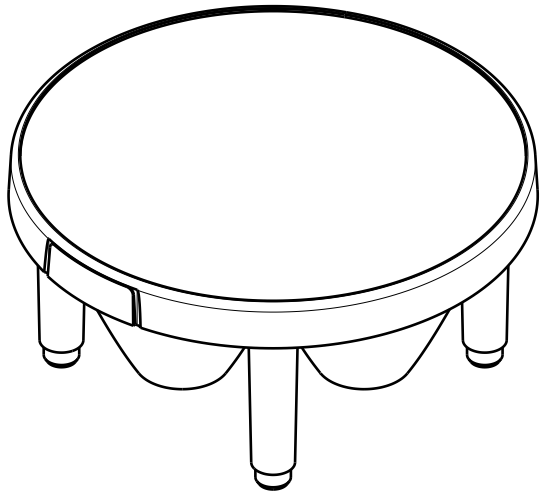
Front view



Top view

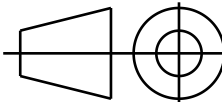




Bottom view



Isometric view  
Scale: 2:1

PART	TYPE	MATERIAL	COLOR / COATING
C10446_CUTE-4-SS		PMMA	

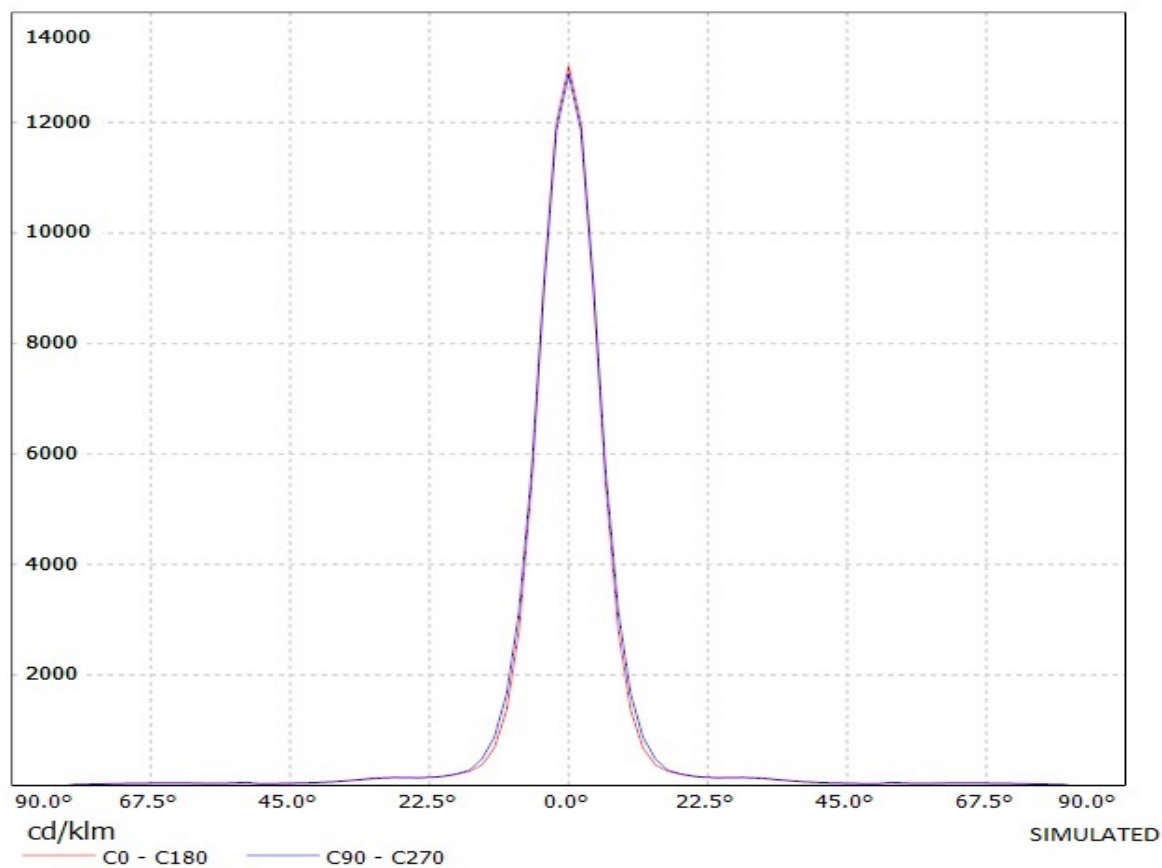
MECHANICAL DRAWING		LEDiL <sup>®</sup>
PRODUCT CUTE		
Plastic moulding general tolerances according to DIN 16901-130 and applies if not otherwise shown in the drawing. Silicone moulding general tolerances according to ISO 3302-1 Class M3 and applies if not otherwise shown in the drawing.	FIRST ANGLE PROJECTION: 	This drawing is the property of LEDiL Oy. It may not be copied or otherwise distributed without prior written permission from LEDiL Oy.
SCALE 2:1	WEIGHT 7,9 g	A3 SHEET 1/1

Notes	
	PCB or heatsink level.
	LED location
Ensure LED fitting from a product specific 3D model available from <a href="http://www.ledil.com">www.ledil.com</a>	
For more details about installation please see LEDiL Installation Guide on <a href="http://www.ledil.com">www.ledil.com</a>	

# Ledil Oy 10446\_Cute-4-SS 10446\_Cute-4-SS / LDC (Linear)

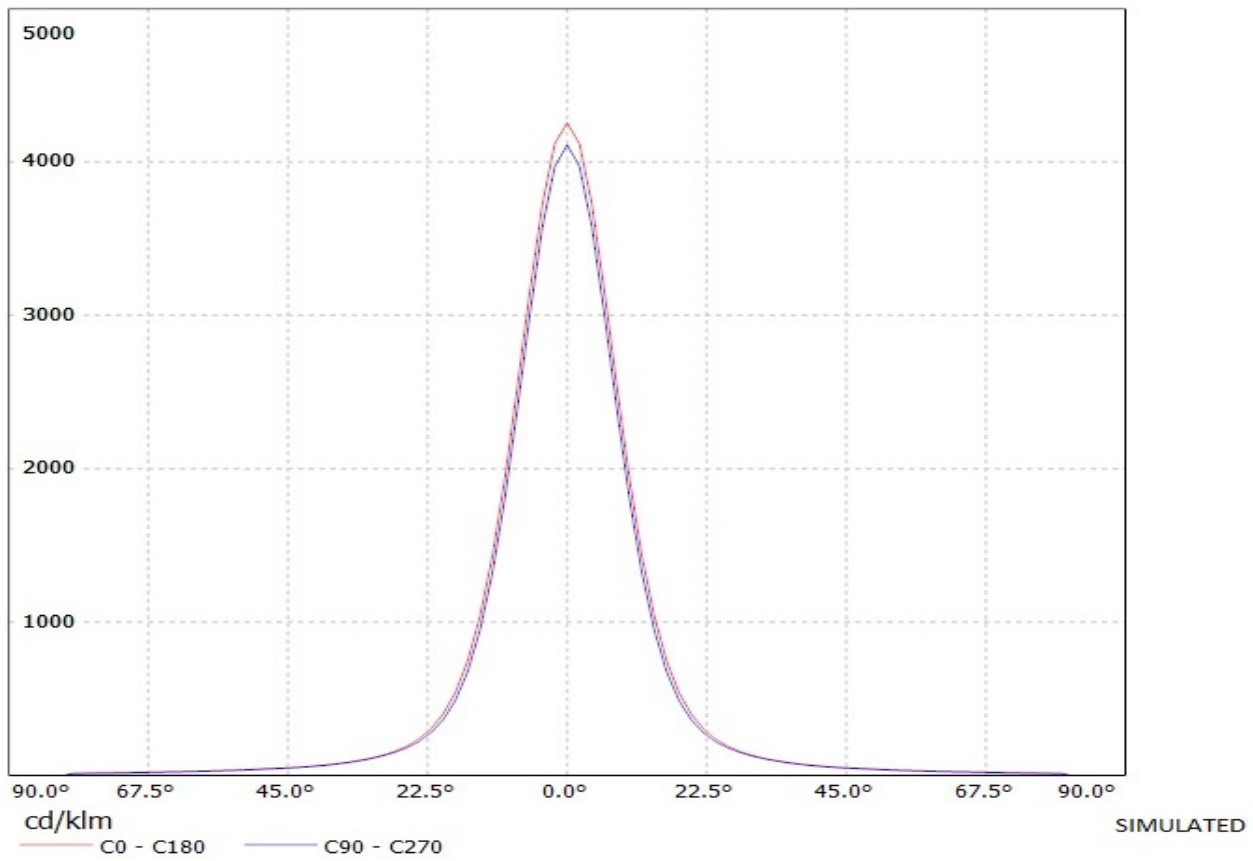
Luminaire: Ledil Oy 10446\_Cute-4-SS 10446\_Cute-4-SS

Lamps: 1 x Cree XR-E 4PCB (white)



# Ledil Oy 10447\_Cute-4-M 10447\_Cute-4-M / LDC (Linear)

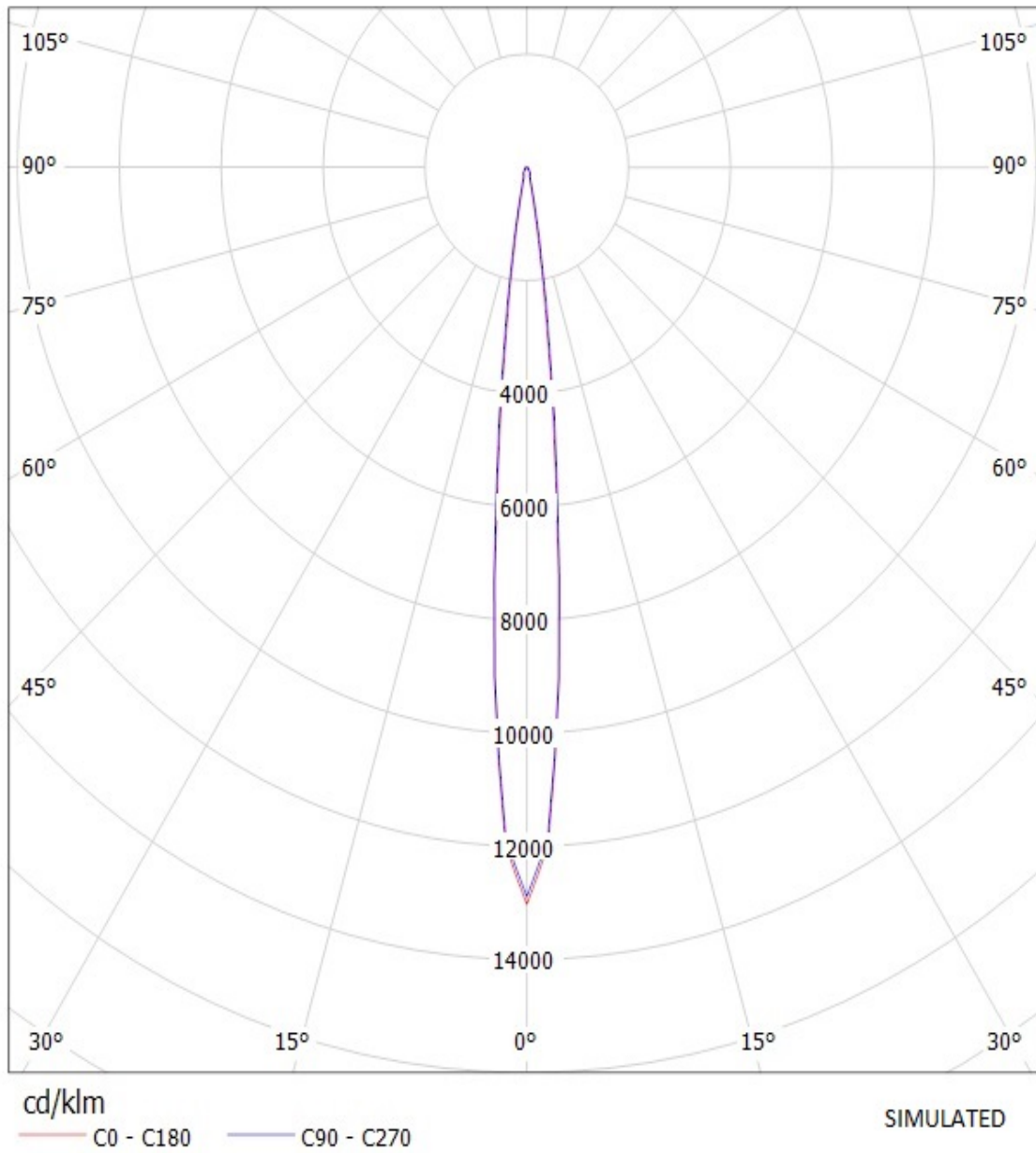
Luminaire: Ledil Oy 10447\_Cute-4-M 10447\_Cute-4-M  
Lamps: 1 x Cree XR-E 4PCB (white)



## Ledil Oy 10446\_Cute-4-SS 10446\_Cute-4-SS / LDC (Polar)

Luminaire: Ledil Oy 10446\_Cute-4-SS 10446\_Cute-4-SS

Lamps: 1 x Cree XR-E 4PCB (white)



## Ledil Oy 10447\_Cute-4-M 10447\_Cute-4-M / LDC (Polar)

Luminaire: Ledil Oy 10447\_Cute-4-M 10447\_Cute-4-M

Lamps: 1 x Cree XR-E 4PCB (white)

