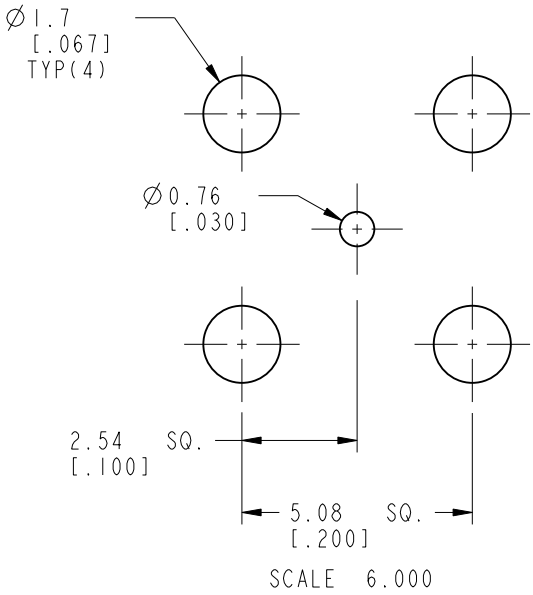
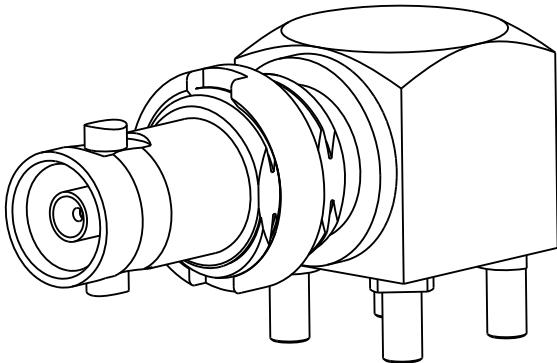
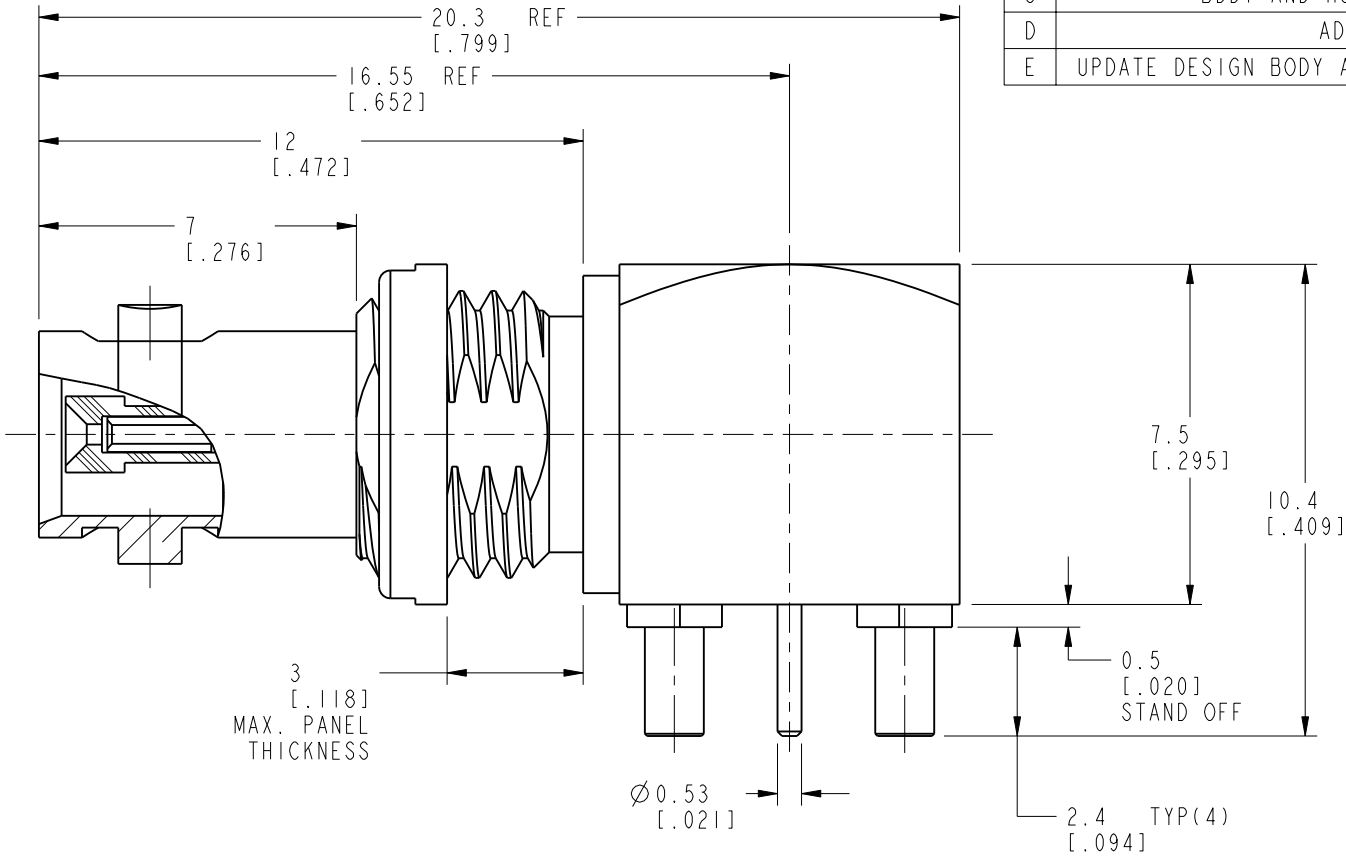


- NOTES:
1. MATERIALS AND FINISHES:  
BODY - BRASS, NICKEL PLATING  
HOUSING - BRASS, GOLD PLATING  
CONTACT - BeCu, GOLD PLATING  
INSULATORS - PTFE, NATURAL
2. ELECTRICAL:  
A. IMPEDANCE: 75 OHMS  
B. FREQUENCY RANGE: DC - 4.5 GHz  
C. RETURN LOSS : -25 dB MIN AT 3 GHz  
D. DIELECTRIC WITHSTANDING VOLTAGE: 1000 VRMS, MIN.  
E. INSULATION RESISTANCE: 10,000 MEGOHMS MIN
3. MECHANICAL:  
A. DURABILITY: 500 CYCLES MIN.
4. ENVIRONMENTAL:  
A. THERMAL SHOCK PER MIL-STD-202 METHOD 107  
TEST CONDITION B (EXCEPT HIGH TEMP @200° C)  
B. VIBRATION: MIL-STD-202 METHOD 204 TEST CONDITION B  
C. SHOCK: MIL-STD-202 METHOD 213 TEST CONDITION B  
D. CORROSION: MIL-STD-202 METHOD 101  
TEST CONDITION B 5% SALT SOLUTION
5. PACKAGING:  
A. QUANTITY: SINGLE PACK  
B. MARKING: BAG TO BE MARKED  
"AMPHENOL RF, 34-1030, AND DATE CODE"

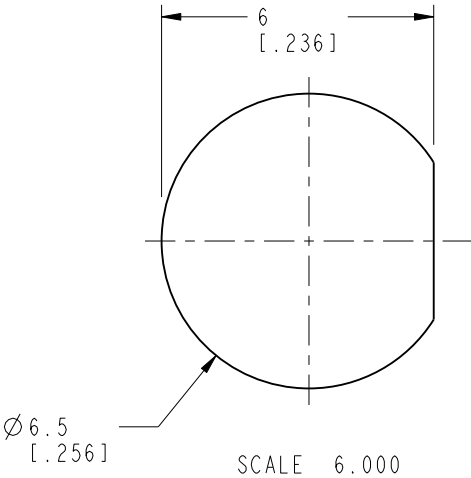
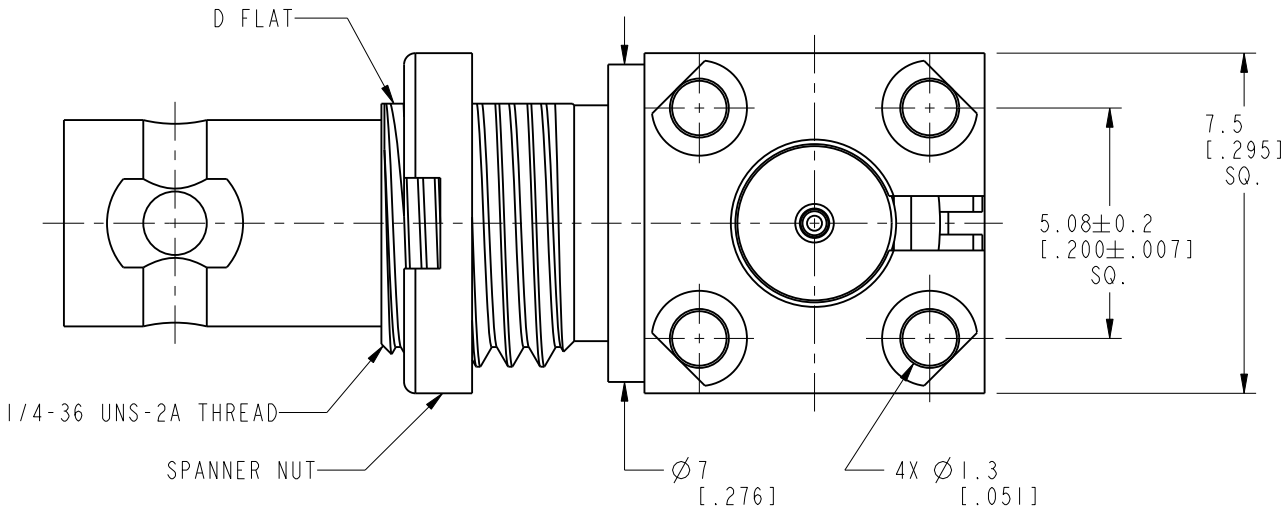
THIRD ANGLE PROJ.

REVISIONS

REV	DESCRIPTION	DATE	ECO	APPR
A	RELEASED TO MFG.	13-Oct-10	48270	PNE
B	REMOVED FORMING	09-Dec-10	48368	SH
C	BDDY AND HOUSING WERE CHANGED	10-May-11	--	SH
D	ADD FORMOVER	9/20/11	48780	JTS
E	UPDATE DESIGN BODY AND HOUSING, CAP WAS CHANGED	24-Oct-12	49222	DH



**RECOMMENDED  
PCB LAYOUT**



**RECOMMENDED  
MOUNTING HOLE**

**CUSTOMER OUTLINE DRAWING**  
ALL OTHER SHEETS ARE FOR INTERNAL USE ONLY

UNLESS OTHERWISE SPECIFIED, DIMENSIONS ARE IN METRIC AND TOLERANCES ARE:  
<0.5mm ± 0.05mm 0.5 - 6mm ±0.1mm 6 - 30mm ±0.2mm 30 - 120mm ± 0.3mm ANGLES ±1°

NOTICE - These drawings, specifications, or other data (1) are, and remain the property of Amphenol corp. (2) must be returned upon request; and (3) are confidential and not to be disclosed to any person other than those to whom they are given by Amphenol Corp. the furnishing of these drawings, specifications, or other data by Amphenol Corp., or to any other person to anyone for any purpose is not to be regarded by implication or otherwise in any manner licensing, granting rights to permitting such holder or any other person to manufacture, use or sell any product, process or design, patented or otherwise, that may in any way be related to or disclosed by said drawings, specifications, or other data.

MATERIAL	SEE NOTES
REFERENCE	EAR # 4028
CONFIGURATION LEVEL:	
FINISH	

DRAWN	T.DENG	DATE	24-Oct-12
ENGINEER	NISCHIT MV	DATE	09-Apr-10
APPROVED	D.HU	DATE	24-Oct-12
CAD FILE			

TITLE	
HD BNC RA BHD JACK PCB MOUNT	
SCALE: 6.0:1.0	SHEET 2 OF 6
DWG SIZE	REV
B	E

Amphenol RF
Danbury CT USA, Tainan, Taiwan, Shenzhen, China www.amphenolrf.com
DRAWING NO.34-1030
ITEM NO.34-1030
PART NO.34-1030

CONFIGURATION-O

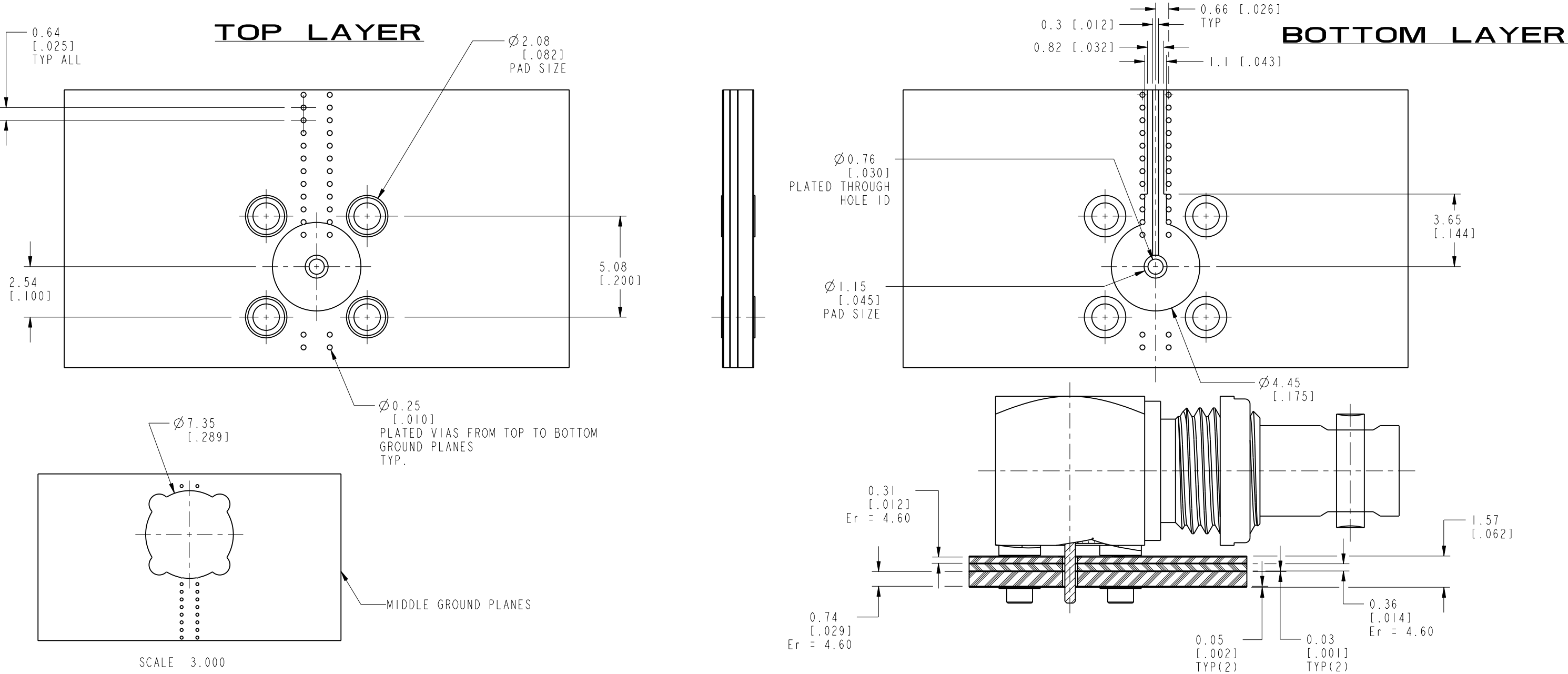
THIRD ANGLE PROJ.

REVISIONS

REV	DESCRIPTION	DATE	ECO	APPR
A	RELEASED TO MFG.	13-Oct-10	48270	PNE
B	REMOVED FORMING	09-Dec-10	48368	SH
C	BDDY AND HOUSING WERE CHANGED	10-May-11	--	SH
D	ADD FORMOVER	9/20/11	48780	JTS
E	UPDATE DESIGN BODY AND HOUSING, CAP WAS CHANGED	24-Oct-12	49222	DH

RECOMMENDED PCB LAUNCH FOR OPTIMAL RF PERFORMANCE

VARIATIONS IN BOARD SUBSTRATE AND TRACE MAY REQUIRE DIFFERENT GEOMETRY



UNLESS OTHERWISE SPECIFIED, DIMENSIONS ARE IN METRIC AND TOLERANCES ARE:  
<0.5mm ± 0.05mm 0.5 - 6mm ±0.1mm 6 - 30mm ±0.2mm 30 - 120mm ± 0.3mm ANGLES ±1°

NOTICE - These drawings, specifications, or other data (1) are, and remain the property of Amphenol corp. (2) must be returned upon request; and (3) are confidential and not to be disclosed to any person other than those to whom they are given by Amphenol Corp. the furnishing of these drawings, specifications, or other data by Amphenol Corp., or to any other person to anyone for any purpose is not to be regarded by implication or otherwise in any manner licensing, granting rights to permitting such holder or any other person to manufacture, use or sell any product, process or design, patented or otherwise, that may in any way be related to or disclosed by said drawings, specifications, or other data.

MATERIAL

DRAWN  
T.DENG

DATE  
24-Oct-12

ENGINEER  
NISCHIT MV

DATE  
29-Jun-10

REFERENCE  
EAR # 4028

APPROVED  
D.HU

DATE  
24-Oct-12

CONFIGURATION LEVEL:

CAD FILE

FINISH

TITLE  
HD BNC RA BHD  
JACK PCB MOUNT

SCALE: 2.0:1.0 SHEET 3 OF 6

DWG SIZE  
B

REV  
E

Amphenol RF

Danbury CT USA, Tainan, Taiwan, Shenzhen, China  
www.amphenolrf.com

DRAWING NO.34-1030

ITEM NO.34-1030

PART NO.34-1030

CONFIGURATION-1

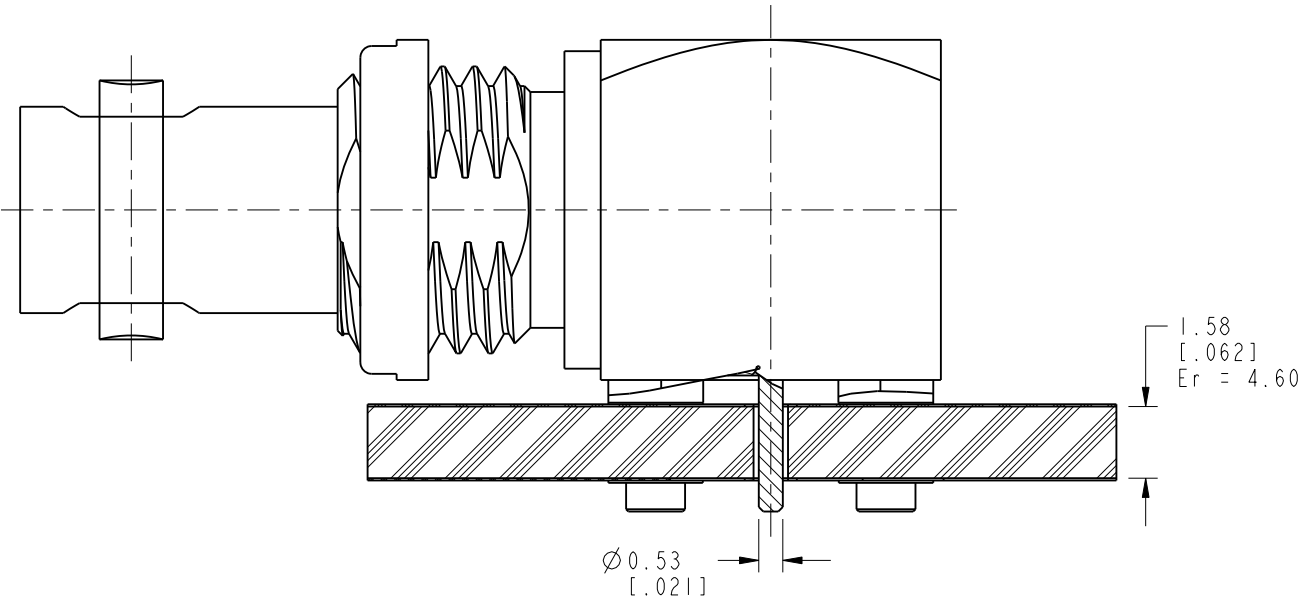
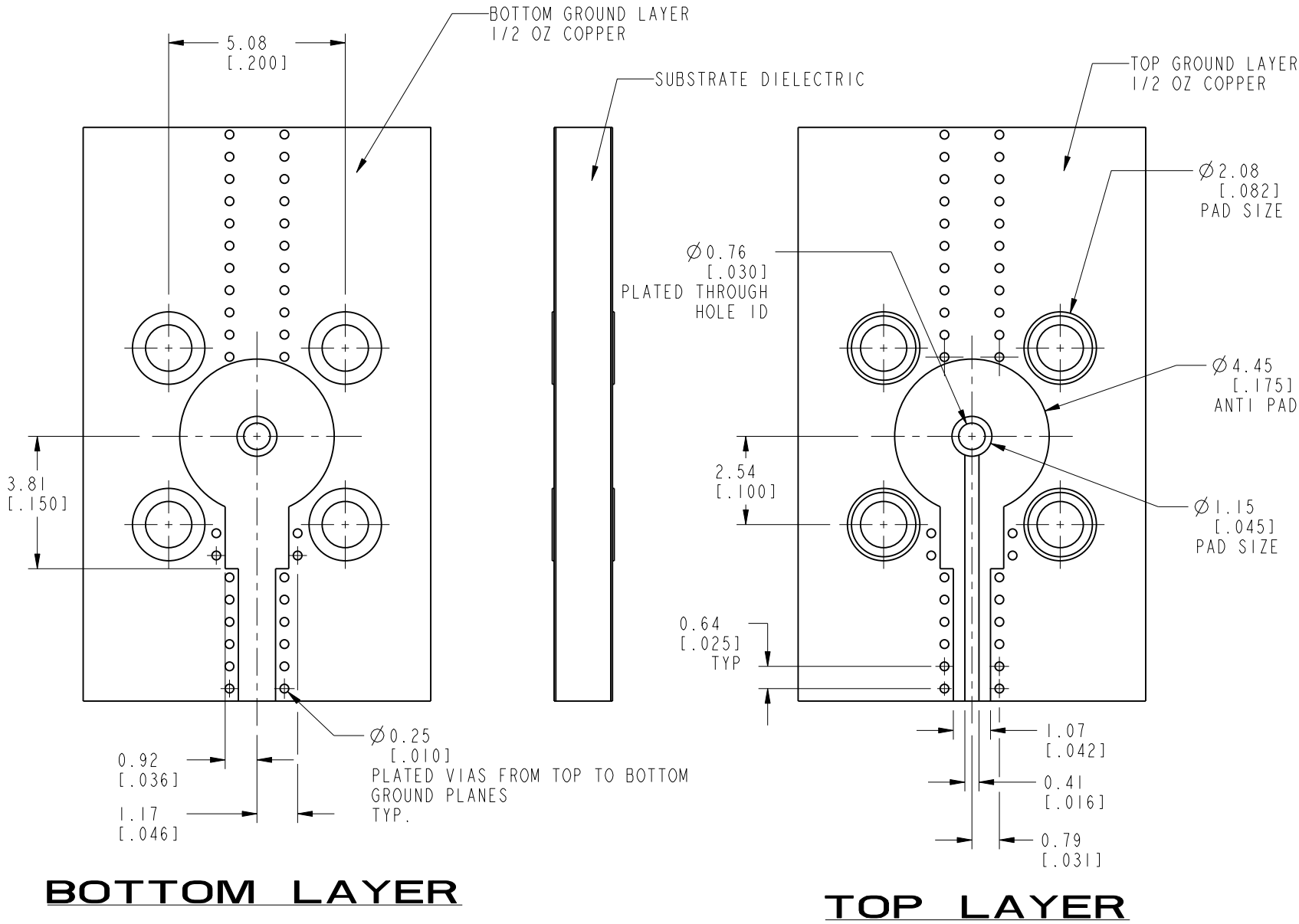
THIRD ANGLE PROJ.

REVISIONS

REV	DESCRIPTION	DATE	ECO	APPR
A	RELEASED TO MFG.	13-Oct-10	48270	PNE
B	REMOVED FORMING	09-Dec-10	48368	SH
C	BDDY AND HOUSING WERE CHANGED	10-May-11	--	SH
D	ADD FORMOVER	9/20/11	48780	JTS
E	UPDATE DESIGN BODY AND HOUSING, CAP WAS CHANGED	24-Oct-12	49222	DH

RECOMMENDED PCB LAUNCH FOR OPTIMAL RF PERFORMANCE

VARIATIONS IN BOARD SUBSTRATE AND TRACE MAY REQUIRE DIFFERENT GEOMETRY



<p>UNLESS OTHERWISE SPECIFIED, DIMENSIONS ARE IN METRIC AND TOLERANCES ARE: &lt;0.5mm ± 0.05mm    0.5 - 6mm ±0.1mm    6 - 30mm ±0.2mm    30 - 120mm ± 0.3mm    ANGLES ±1°</p> <p>NOTICE - These drawings, specifications, or other data (1) are, and remain the property of Amphenol corp. (2) must be returned upon request; and (3) are confidential and not to be disclosed to any person other than those to whom they are given by Amphenol Corp. the furnishing of these drawings, specifications, or other data by Amphenol Corp., or to any other person to anyone for any purpose is not to be regarded by implication or otherwise in any manner licensing, granting rights to permitting such holder or any other person to manufacture, use or sell any product, process or design, patented or otherwise, that may in any way be related to or disclosed by said drawings, specifications, or other data.</p>	MATERIAL	DRAWN T.DENG	DATE 24-Oct-12	<p>TITLE HD BNC RA BHD JACK PCB MOUNT</p> <p>SCALE: 3.0:1.0   SHEET 4 OF 6</p> <p>DWG SIZE B    REV E</p>	<p>Amphenol RF Danbury CT USA, Tainan, Taiwan, Shenzhen, China www.amphenolrf.com</p> <p>DRAWING NO.34-1030</p> <p>ITEM NO.34-1030</p> <p>PART NO.34-1030</p>
	REFERENCE EAR # 4028	ENGINEER NISCHIT MV	DATE 29-Jun-10		
	CONFIGURATION LEVEL:	APPROVED D.HU	DATE 24-Oct-12		
	FINISH	CAD FILE			

REV	DESCRIPTION	DATE	ECO	APPR
A	RELEASED TO MFG.	13-Oct-10	48270	PNE
B	REMOVED FORMING	09-Dec-10	48368	SH
C	BDDY AND HOUSING WERE CHANGED	10-May-11	--	SH
D	ADD FORMOVER	9/20/11	48780	JTS
E	UPDATE DESIGN BODY AND HOUSING, CAP WAS CHANGED	24-Oct-12	49222	DH

## RECOMMENDED PCB LAUNCH FOR OPTIMAL RF PERFORMANCE

The image displays three technical drawings of a microstrip antenna substrate, including a bottom layer layout, a top layer layout, and a cross-sectional view.

**Bottom Layer:** Shows a square substrate with a central circular patch and four smaller circular patches at the corners. Dimensions include a total width of 5.08 [0.200], a central patch diameter of  $\varnothing 3.81$  [0.150], and a central patch diameter of  $\varnothing 0.41$  [0.016]. The substrate is labeled "SUBSTRATE DIELECTRIC" and "BOTTOM GROUND LAYER 1/2 OZ COPPER".

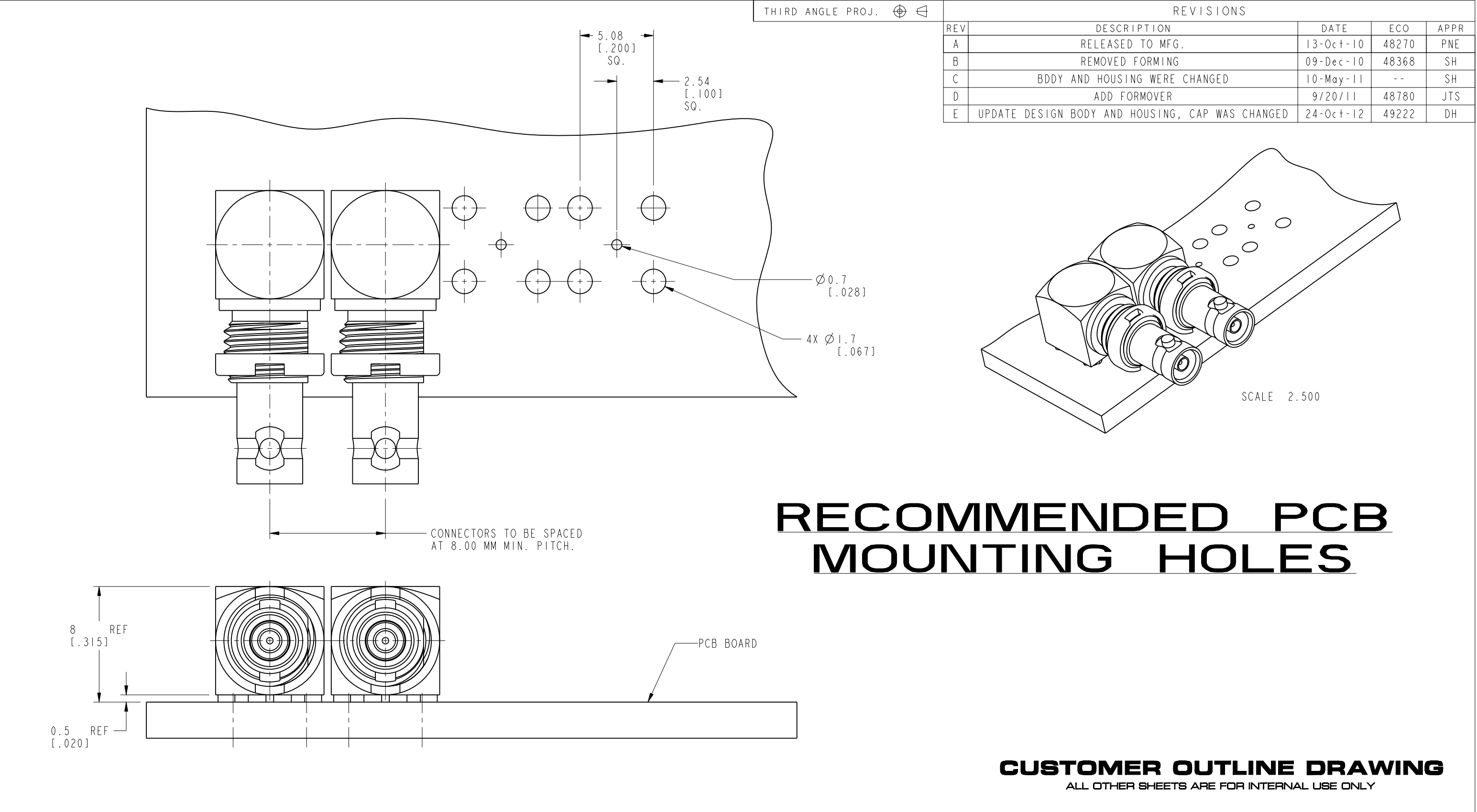
**Top Layer:** Shows the same square substrate with a central circular patch and four smaller circular patches at the corners. Dimensions include a total width of 5.08 [0.200], a central patch diameter of  $\varnothing 3.81$  [0.150], and a central patch diameter of  $\varnothing 0.41$  [0.016]. The substrate is labeled "SUBSTRATE DIELECTRIC" and "TOP GROUND LAYER 1/2 OZ COPPER".

**Cross-sectional View:** Shows a side view of the substrate with a central circular patch and four smaller circular patches at the corners. Dimensions include a total width of 5.08 [0.200], a central patch diameter of  $\varnothing 3.81$  [0.150], and a central patch diameter of  $\varnothing 0.41$  [0.016]. The substrate is labeled "SUBSTRATE DIELECTRIC" and "TOP GROUND LAYER 1/2 OZ COPPER".

NOTICE - These drawings, specifications, or other data (1) are, and remain the property of Amphenol corp. (2) must be returned upon request; and (3) are confidential and not to be disclosed to any person other than those to whom they are given by Amphenol Corp., the furnishing of these drawings, specifications, or other data by Amphenol Corp., or to any other person to anyone for any purpose is not to be regarded by implication or otherwise in any manner licensing, granting rights to permitting such holder or any other person to manufacture, use or sell any product, process or design, patented or otherwise, that may in any way be related to or disclosed by said drawings, specifications, or other data.

PART NO. 34-1030

$$E_r = 4.60$$



<div>UNLESS OTHERWISE SPECIFIED, DIMENSIONS ARE IN METRIC AND TOLERANCES ARE: &lt;0.5mm ± 0.05mm    0.5 - 6mm ±0.1mm    6 - 30mm ±0.2mm    30 - 120mm ± 0.3mm    ANGLES ±1°</div> <div>NOTICE - These drawings, specifications, or other data (1) are, and remain the property of Amphenol corp. (2) must be returned upon request; and (3) are confidential and not to be disclosed to any person other than those to whom they are given by Amphenol Corp. the furnishing of these drawings, specifications, or other data by Amphenol Corp., or to any other person to anyone for any purpose is not to be regarded by implication or otherwise in any manner licensing, granting rights to permitting such holder or any other person to manufacture, use or sell any product, process or design, patented or otherwise, that may in any way be related to or disclosed by said drawings, specifications, or other data.</div>	MATERIAL	DRAWN T.DENG	DATE 24-Oct-12	TITLE HD BNC RA BHD JACK PCB MOUNT		Amphenol RF Danbury CT USA, Tainan, Taiwan, Shenzhen, China www.amphenolrf.com	
	REFERENCE EAR # 4028	ENGINEER NISCHIT MV	DATE 20-May-10				
	CONFIGURATION LEVEL:	APPROVED D.HU	DATE 24-Oct-12	SCALE: 7.8:1.0   SHEET 6 OF 6		DRAWING NO.34-1030	
	FINISH	CAD FILE		DWG SIZE B	REV E	ITEM NO.34-1030 PART NO.34-1030	