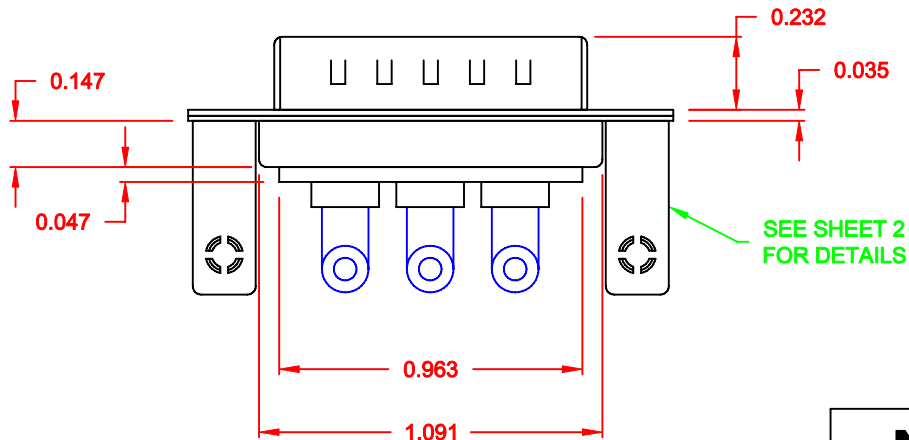
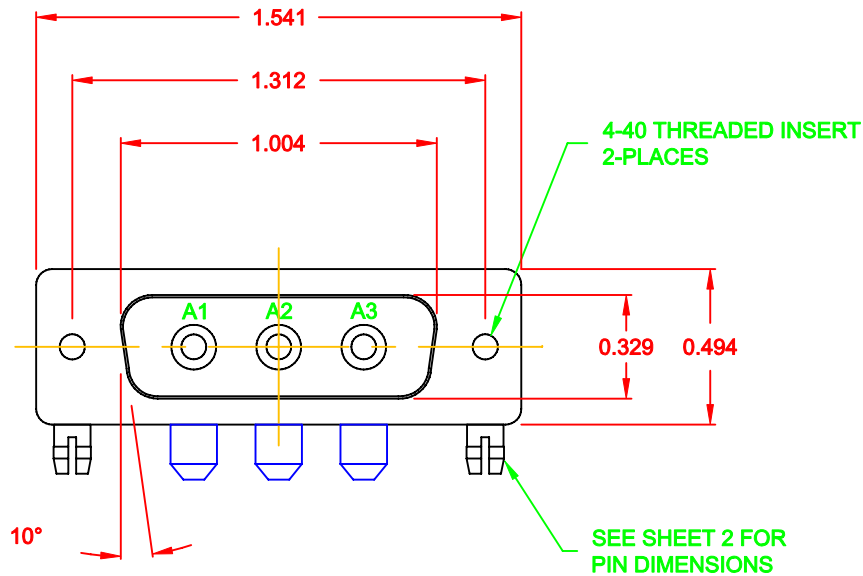


DESCRIPTION: POWER - RIGHT ANGLE - MALE



SPECIFICATIONS:

ELECTRICAL:
INSULATOR RESISTANCE: 5,000 MegOHMS Min.
DIELECTRIC WITHSTANDING: 1,000VAC r.m.s.
OPERATING TEMPERATURE: -55° C ~ +125° C
CONTACT RESISTANCE: 30 MilliOHMS Max.
POWER PINS: 40 AMPS

MECHANICAL:
CONTACT INSERTION FORCE: 4.5 Kg Max.
CONTACT SEPARATOR FORCE: 0.3Kg Min.



MATERIALS:
CONTACTS: BRASS
INSULATOR: PBT UL94V-0 RATED,
230°C PROCESS TEMP.
SHELL: STEEL
BOARD LOCK: BRASS, NICKEL PLATED
CINCHNUT: BRASS, NICKEL PLATED
BRACKET: STEEL, NICKEL PLATED

FINISH:
SHELL: NICKEL

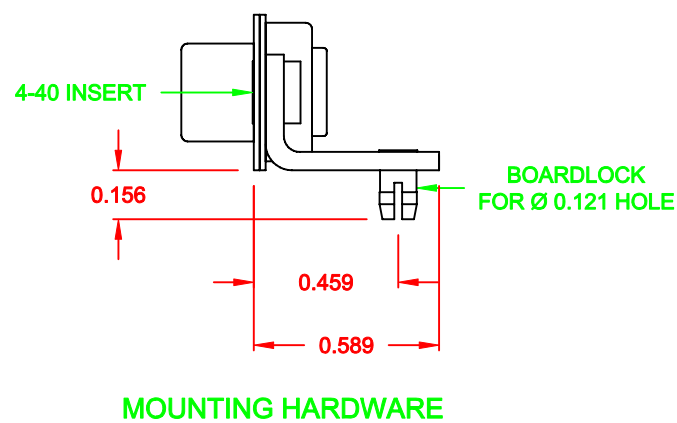
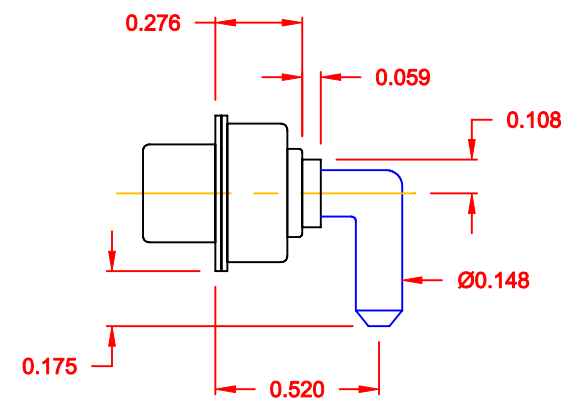
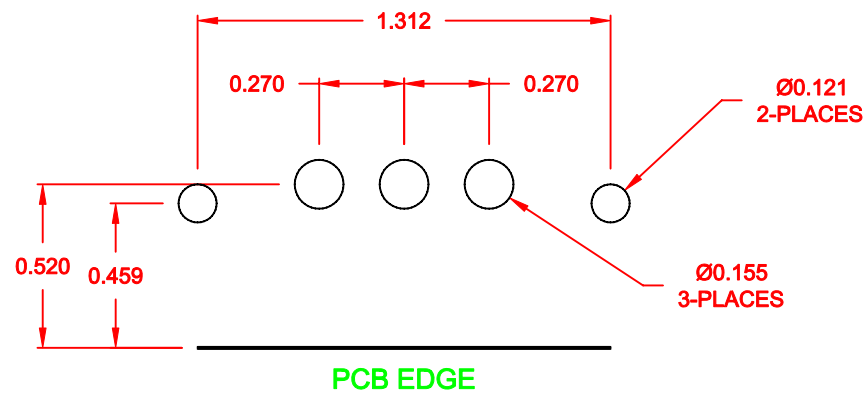
6843W3103L461

46 = 4-40 INSERTS /
BOARD LOCKS

RoHS COMPLIANT


| | | | | | |
|--|---|-----------------------|--------------|-------------------|-------|
|  | THESE DRAWINGS AND SPECIFICATIONS ARE THE PROPERTY OF NorComp AND SHALL NOT BE REPRODUCED, COPIED OR USED AS THE BASIS FOR THE MANUFACTURE OR SALE OF APPARATUS WITHOUT WRITTEN PERMISSION. | DRAWN: C. SMITH | | DATE: 10-05-06 | |
| | | CHECKED: | | DATE: | |
| | | SCALE: 1.5 = 1 | SHEET 1 OF 2 | | REV 2 |
|  | | DWG NO. 6843W3103L461 | | | |
| | | | | | |

NOTE:
POWER CONTACTS COME
PRE-LOADED INTO INSULATORS



40 AMP POWER CONTACT

RoHS COMPLIANT

| | | | | | | |
|--|---|--|-----------------------|--|----------------|--|
|  NorComp | THESE DRAWINGS AND SPECIFICATIONS ARE THE PROPERTY OF NorComp AND SHALL NOT BE REPRODUCED, COPIED OR USED AS THE BASIS FOR THE MANUFACTURE OR SALE OF APPARATUS WITHOUT WRITTEN PERMISSION. | | DRAWN: C. SMITH | | DATE: 10-05-06 | |
| | | | CHECKED: | | DATE: | |
| | | | SCALE: 1.5 = 1 | | SHEET 2 OF 2 | |
| | | | DWG NO. 6843W3103L461 | | REV 2 | |