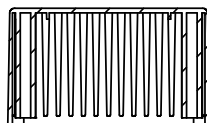


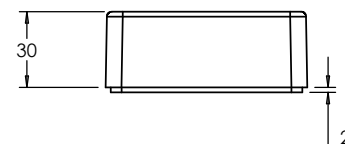
OVERALL ASSEMBLY DIMENSIONS:

EXTERNAL - 150 x 80 x 76

INTERNAL - 146.4 x 76.4 x 46.5



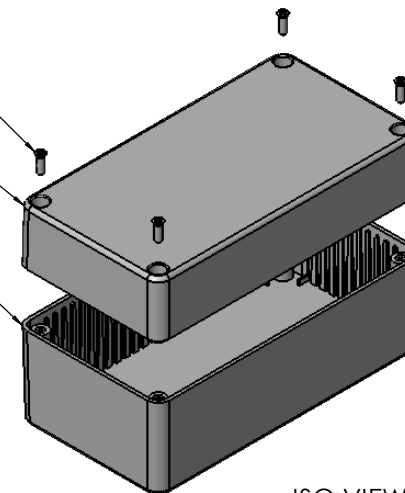
SECTION B-B



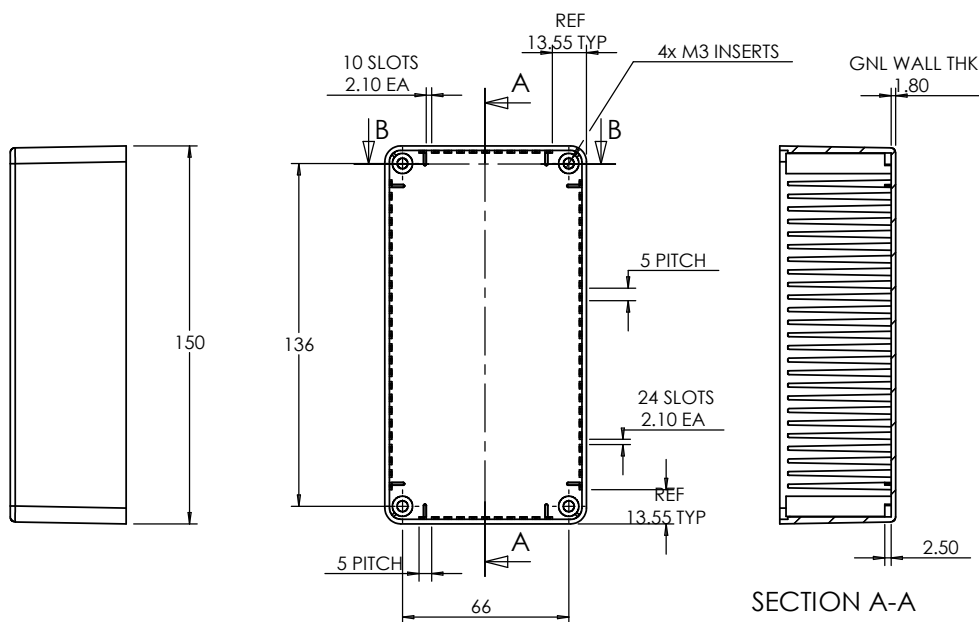
M3 CSK SCREW

LID

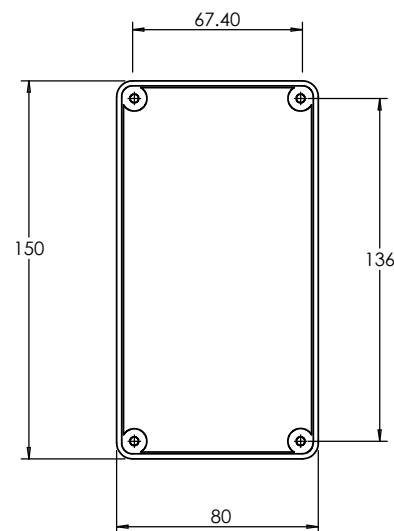
BASE



ISO VIEW

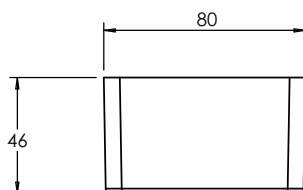



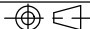
SECTION A-A



LID

BASE



 <p>JAMES CARTER RD, MILDENHALL, SUFFOLK. IP28 7DE TEL: 01638 716101 FAX: 01638 716554 EMAIL: SALES@BOSS-ENCLOSURES.CO.UK WEB: www.BOSS-ENCLOSURES.CO.UK</p>				UNLESS OTHERWISE SPECIFIED: DIMENSIONS ARE IN MILLIMETERS		DO NOT SCALE DRAWING	REVISION. 0
				FINISH: SMOOTH		TITLE: ASSEMBLY DRG FOR 2005,25	
DRAWN	NAME S.HARDINGE	SIGNED SJH	DATE 05/10/05	MATERIAL: ABS		DWG NO. 2005,25	A4
CHK'D	-	-	-	PROJECTION. 		SCALE. 1 : 3	SHEET 1 OF 1