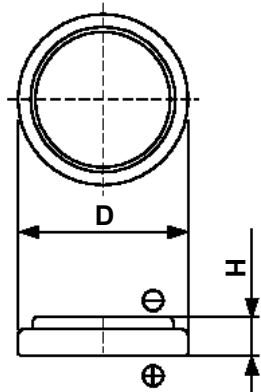


## Cell Type CR2430v Specifications

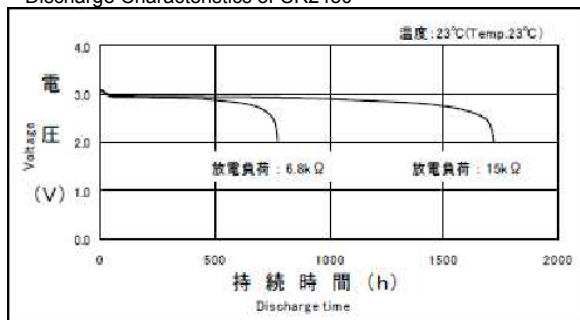


Nominal Voltage (V)		3
Nominal Capacity (mAh) <sup>*1</sup>		300
Standard Discharge Current (mA)		0.3
Operating Temperature Range (°C)		-20 ~ +70
Max. Dimensions (mm)	Diameter (D)	24.5
	Height (H)	3.0
Weight (g)		4.3

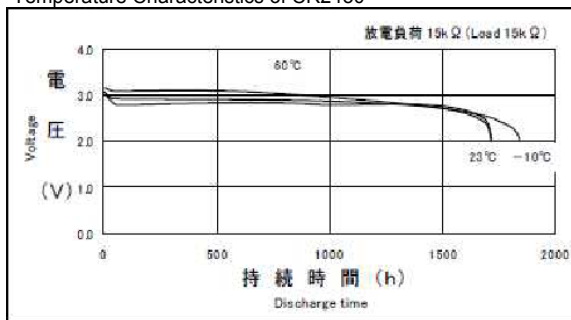
<sup>\*1</sup> Nominal capacity is determined at an end voltage of 2.0V when the battery is allowed to discharge at a standard current level at +23°C.

### Typical Characteristics

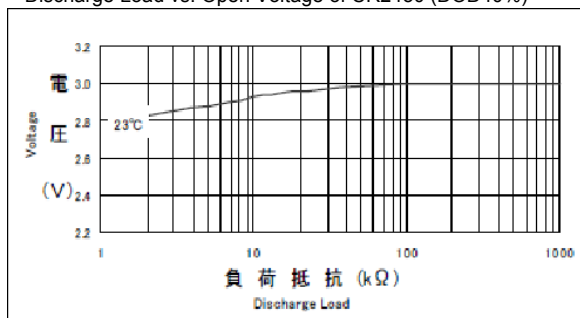
Discharge Characteristics of CR2430



Temperature Characteristics of CR2430



Discharge Load vs. Open Voltage of CR2430 (DOD40%)



Discharge Load vs. Cell Capacity of CR2430

