



MODEL SS0330

Applications: Ideal for environments subject to corrosion.

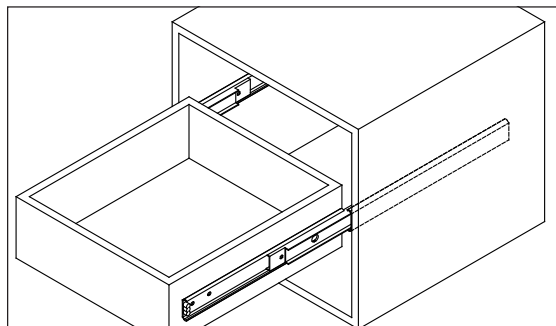
Stainless Steel

Full Extension

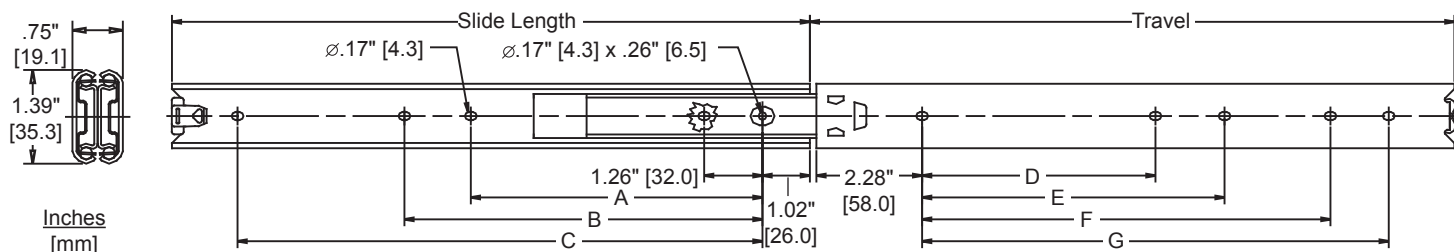
Hold-in Detent

Up to 143 lb. [65 kg.] Load Rating

.75" [19.1 mm] Slide Thickness



Closed Position



Finish: Stainless Steel (RoHS compliant)

Length: 12"-24" [300 mm-600 mm] and 28" [700 mm]**

Travel: Full extension

Height: 1.39" [35.3 mm]

Load: Up to 143 lbs. [65 kg]

Side Space: .75+.030/-0.000 [19.1 mm+.76/-0.00]

Mounting: Side or hard mount

Hardware: #8 pan head screws (not included)

Features: Hold-in detent

Part Number	Slide Length	Travel $\pm .13 [3.2]$	A	B	C	D	E	F	G	lb [kg] Load Rating
SS0330-12	11.81 [300]	11.98 [304.5]		7.55 [192]	8.81 [224]			7.55 [192]	8.81 [224]	110 [50]
SS0330-14	13.77 [350]	13.93 [354]		8.81 [224]	10.07 [256]			8.81 [224]	10.07 [256]	121 [55]
SS0330-16	15.74 [400]	15.86 [403]		7.55 [192]	12.59 [320]	6.29 [160]		11.33 [288]	12.59 [320]	121 [55]
SS0330-18	17.71 [450]	17.79 [452]		8.81 [224]	13.85 [352]	7.55 [192]		12.59 [320]	13.85 [352]	143 [65]
SS0330-20	19.68 [500]	19.72 [501]	10.07 [256]	11.33 [288]	16.37 [416]	8.81 [224]	10.07 [256]	15.11 [384]	16.37 [416]	121 [55]
SS0330-22	21.65 [550]	21.67 [550.5]	11.33 [288]	12.59 [320]	18.90 [480]	10.08 [256]	11.34 [288]	16.38 [416]	17.64 [448]	110 [50]
SS0330-24	23.62 [600]	23.62 [600]	12.60 [320]	13.86 [352]	20.16 [512]	11.34 [288]	12.60 [320]	18.90 [480]	20.16 [512]	99 [45]
SS0330-28	27.55 [700]	27.48 [698]	13.86 [352]	15.12 [384]	23.94 [608]	12.60 [320]	13.86 [352]	22.68 [576]	23.94 [608]	77 [35]

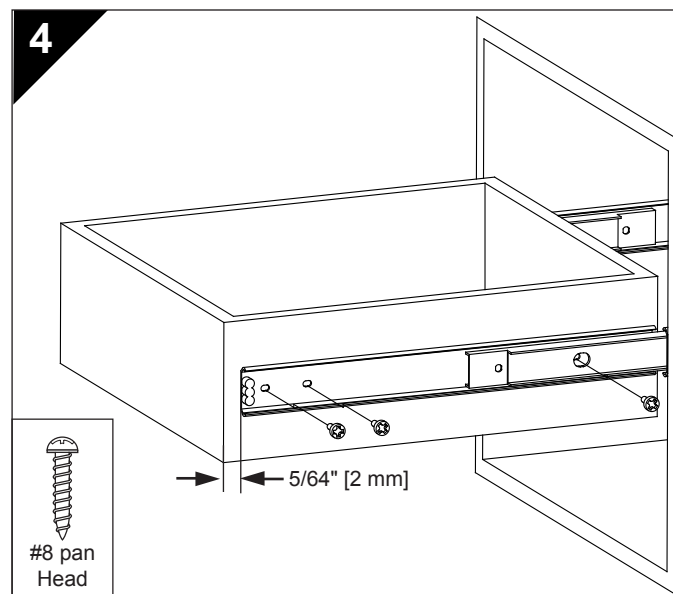
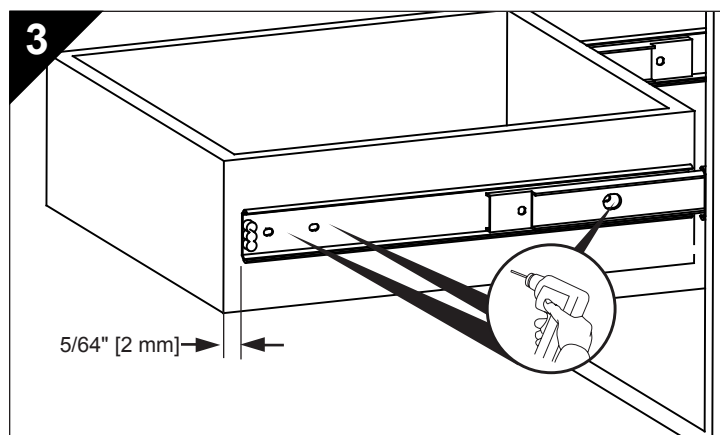
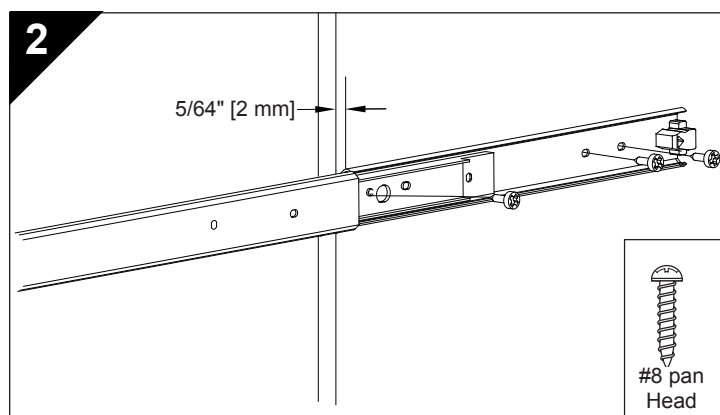
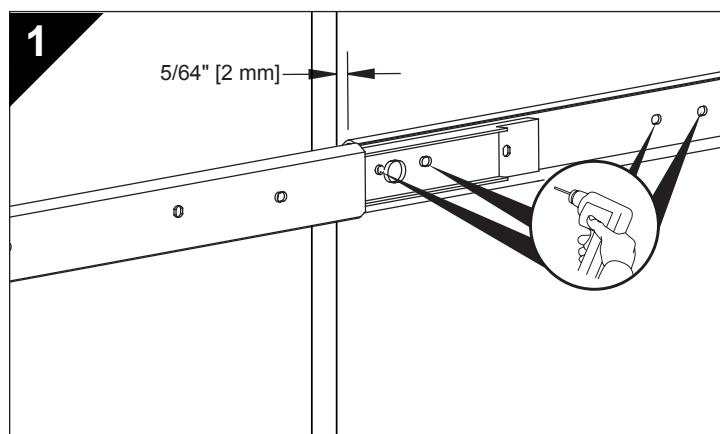
** Note: The lengths indicated in inches are approximate conversions from the metric measurements; please see the chart above for exact dimensions.

Installation Instructions

Important: Accuride recommends first pre-drilling all mounting holes (Figures 1 and 3). Align the slide as described below to pre-drill.

1. Set the outer member back 5/64" [2 mm] from the cabinet or rack opening. Mount the slide member to the cabinet or rack (Figure 2) using #8 pan head screws (not included). Be sure slides are parallel.
2. For flush-mounted drawers, position the inner member 5/64" [2 mm] back from the front of the drawer or chassis. Mount using #8 pan head screws (Figure 4).
3. Check slide alignment by opening and closing the drawer/chassis. Any sign of binding indicates an issue with side space, alignment, or the cabinet and/or drawer are out of square. To adjust alignment, loosen the screws and adjust the slide position until movement is smooth. Retighten screws. Add additional screws if necessary to secure completely.

Note: To ensure proper slide operation, make certain that all mounting screw heads are fully seated inside the slide. Use #8 pan head screws (not included); do not use washers.



Packaging

Bulk (P) Pack: All lengths are packaged 10 pair per box. Fasteners are not included.

Specifications

Slide Members: Stainless Steel
Ball Retainers: Stainless Steel
Ball Bearings: Stainless Steel
Stainless steel finish is RoHS compliant

Note: Specifications, materials, prices, terms, and delivery are subject to change without notice.

Slide Ordering Instructions

Complete your slide order for model SS0330 by specifying the following information:

	10 Pair	SS	0330	-18 P
Total Slides Required	_____	_____	_____	_____
Slide Finish	_____	_____	_____	_____
Slide Model	_____	_____	_____	_____
Slide Length	_____	_____	_____	_____
Packaging (Fasteners are not included)	_____	_____	_____	_____

Accuride

ACCURIDE INTERNATIONAL INC.

12311 Shoemaker Avenue
Santa Fe Springs, CA 90670

TEL (562) 903-0200
FAX (562) 903-0208
www.accuride.com

Manufacturing, Engineering, and Sales
United States • Germany • Japan • Mexico • United Kingdom • China