

# KEL 24

## Cable entry frames



Split inserts



Surrounding tongue and groove connection

1

## Product description

The KEL-24 matches exactly the cut-out dimensions of 24-pole standard industrial connectors.

The split insert matching the cable diameter is placed around the cable and inserted into the cable entry frame.

Either a cut out of 36mm or 46mm tall can be chosen depending on the cables being routed. This flexibility is perfect for pre-terminated cables.

## Advantages

- Warranty of pre-terminated cables remains
- Retrofitting and maintenance can be carried out easily and quickly
- High packing density, wide variety of frames and inserts
- Strain relief according DIN EN 50262

## Specification

Material	Polyamide
Flame class	UL-94 Vo, self-extinguishing
Protection class	IP 54, with gasket and correct selection of the cable inserts
Temperature	- 40°C to + 140°C (static)
Properties	halogen-free, silicone-free
Cut-out dimensions	36 x 112 mm / page 106

## Accessories

KT Cable inserts	Page 20   24
KEL-SNAP SNAP frames	Page 15
KEL-EMC Cable collector	Page 82   84
KDR2   KDR Base plates	Page 90   93
FP Flanged plates	Page 94   97
MP Module plates	Page 98

Description	Type	Order No.	Inserts KT small   large	PU
	KEL 24   10	42241	10   -	10
	KEL 24   7	42247	6   1	10
	KEL 24   5	42248	5   -	10
	KEL 24   4	42244	2   2	10

# KEL 16

## Cable entry frames



Surrounding tongue  
and groove connection



Split inserts



## Product description

The KEL-16 matches exactly the cut-out dimensions of 16-pole standard industrial connectors.

The split insert matching the cable diameter is placed around the cable and inserted into the cable entry frame.

Either a cut out of 36mm or 46mm tall can be chosen depending on the cables being routed. This flexibility is perfect for pre-terminated cables.

## Advantages

- Warranty of pre-terminated cables remains
- Retrofitting and maintenance can be carried out easily and quickly
- High packing density, wide variety of frames and inserts
- Strain relief according DIN EN 50262

## Specification

Material	Polyamide
Flame class	UL-94 Vo, self-extinguishing
Protection class	IP 54, with gasket and correct selection of the cable inserts
Temperature	- 40°C to + 140°C (static)
Properties	halogen-free, silicone-free
Cut-out dimensions	36 x 86 mm / page 106

## Accessories

KT Cable inserts	Page 20   24
KEL-SNAP SNAP frames	Page 15
KEL-EMC Cable collector	Page 82   84
KDR Base plates	Page 92   93

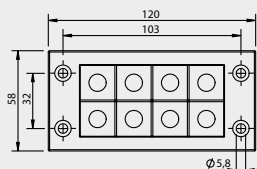
Type	Order No.	Inserts KT small   large	PU	Description
------	-----------	-----------------------------	----	-------------

KEL  
16 | 8

42168

8 | -

10

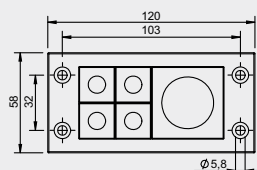


KEL  
16 | 5

42165

4 | 1

10

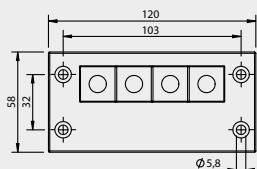


KEL  
16 | 4

42164

4 | -

10

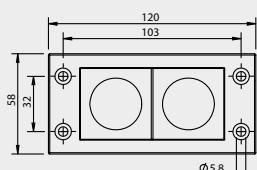


KEL  
16 | 2

42162

- | 2

10



# KEL 10

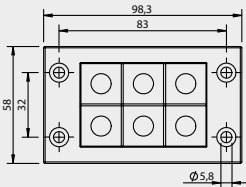
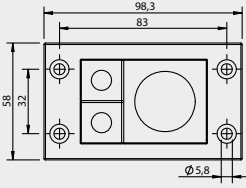
## Cable entry frames



Split inserts



Surrounding tongue and groove connection

Description	Type	Order No.	Inserts KT	PU
			small   large	
	KEL 10   6	42216	6   -	10
	KEL 10   3	42212	2   1	10

### Product description

The KEL-10 matches exactly the cut-out dimensions of 10-pole standard industrial connectors.

The split insert matching the cable diameter is placed around the cable and inserted into the cable entry frame.

Either a cut out of 36mm or 46mm tall can be chosen depending on the cables being routed. This flexibility is perfect for pre-terminated cables.

### Advantages

- Warranty of pre-terminated cables remains
- Retrofitting and maintenance can be carried out easily and quickly
- High packing density, wide variety of frames and inserts
- Strain relief according DIN EN 50262

### Specificationen

Material	Polyamide
Flame class	UL-94 Vo, self-extinguishing
Protection class	IP 54, with gasket and correct selection of the cable inserts
Temperature	- 40°C to + 140°C (static)
Properties	halogen-free, silicone-free
Cut-out dimensions	36 x 65 mm / page 106

### Accessories

KT Cable inserts	Page 20   24
KEL-SNAP SNAP frames	Page 15
KEL-EMC Cable collector	Page 83   84

## KEL - B

### Cable entry frames



Surrounding tongue  
and groove connection



Split inserts



### Product description

The KEL-B matches exactly the cut-out dimensions of 46 x 46 mm measuring instruments.

The split insert matching the cable diameter is placed around the cable and inserted into the cable entry frame.

For routing cables and conduits up to 34 mm diameter.

### Advantages

- Warranty of pre-terminated cables remains
- Retrofitting and maintenance can be carried out easily and quickly
- Space saving shape
- Small cut-out, high packing density
- Strain relief according DIN EN 50262

### Specification

Material	Polyamide
Flame class	UL-94 Vo, self-extinguishing
Protection class	IP 54, with gasket and correct selection of the cable inserts
Temperature	- 40°C to + 140°C (static)
Properties	halogen-free, silicone-free
Cut-out dimensions	46 x 46 mm / page 106

### Accessories

KT Cable inserts	Page 20   24
KEL-SNAP SNAP frames	Page 15
KEL-EMC Cable collector	Page 83   84

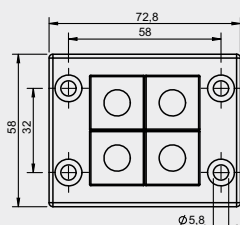
Type	Order No.	Inserts KT small   large	PU	Description
------	-----------	-----------------------------	----	-------------

KEL - B4

42204

4 | -

10



KEL - B1

42206

- | 1

10

