



**Is Now Part of**



**ON Semiconductor®**

**To learn more about ON Semiconductor, please visit our website at**  
**[www.onsemi.com](http://www.onsemi.com)**

Please note: As part of the Fairchild Semiconductor integration, some of the Fairchild orderable part numbers will need to change in order to meet ON Semiconductor's system requirements. Since the ON Semiconductor product management systems do not have the ability to manage part nomenclature that utilizes an underscore (\_), the underscore (\_) in the Fairchild part numbers will be changed to a dash (-). This document may contain device numbers with an underscore (\_). Please check the ON Semiconductor website to verify the updated device numbers. The most current and up-to-date ordering information can be found at [www.onsemi.com](http://www.onsemi.com). Please email any questions regarding the system integration to [Fairchild\\_questions@onsemi.com](mailto:Fairchild_questions@onsemi.com).

ON Semiconductor and the ON Semiconductor logo are trademarks of Semiconductor Components Industries, LLC dba ON Semiconductor or its subsidiaries in the United States and/or other countries. ON Semiconductor owns the rights to a number of patents, trademarks, copyrights, trade secrets, and other intellectual property. A listing of ON Semiconductor's product/patent coverage may be accessed at [www.onsemi.com/site/pdf/Patent-Marking.pdf](http://www.onsemi.com/site/pdf/Patent-Marking.pdf). ON Semiconductor reserves the right to make changes without further notice to any products herein. ON Semiconductor makes no warranty, representation or guarantee regarding the suitability of its products for any particular purpose, nor does ON Semiconductor assume any liability arising out of the application or use of any product or circuit, and specifically disclaims any and all liability, including without limitation special, consequential or incidental damages. Buyer is responsible for its products and applications using ON Semiconductor products, including compliance with all laws, regulations and safety requirements or standards, regardless of any support or applications information provided by ON Semiconductor. "Typical" parameters which may be provided in ON Semiconductor data sheets and/or specifications can and do vary in different applications and actual performance may vary over time. All operating parameters, including "Typicals" must be validated for each customer application by customer's technical experts. ON Semiconductor does not convey any license under its patent rights nor the rights of others. ON Semiconductor products are not designed, intended, or authorized for use as a critical component in life support systems or any FDA Class 3 medical devices or medical devices with a same or similar classification in a foreign jurisdiction or any devices intended for implantation in the human body. Should Buyer purchase or use ON Semiconductor products for any such unintended or unauthorized application, Buyer shall indemnify and hold ON Semiconductor and its officers, employees, subsidiaries, affiliates, and distributors harmless against all claims, costs, damages, and expenses, and reasonable attorney fees arising out of, directly or indirectly, any claim of personal injury or death associated with such unintended or unauthorized use, even if such claim alleges that ON Semiconductor was negligent regarding the design or manufacture of the part. ON Semiconductor is an Equal Opportunity/Affirmative Action Employer. This literature is subject to all applicable copyright laws and is not for resale in any manner.

# FS6S1265RE

## Fairchild Power Switch(FPS)

### Features

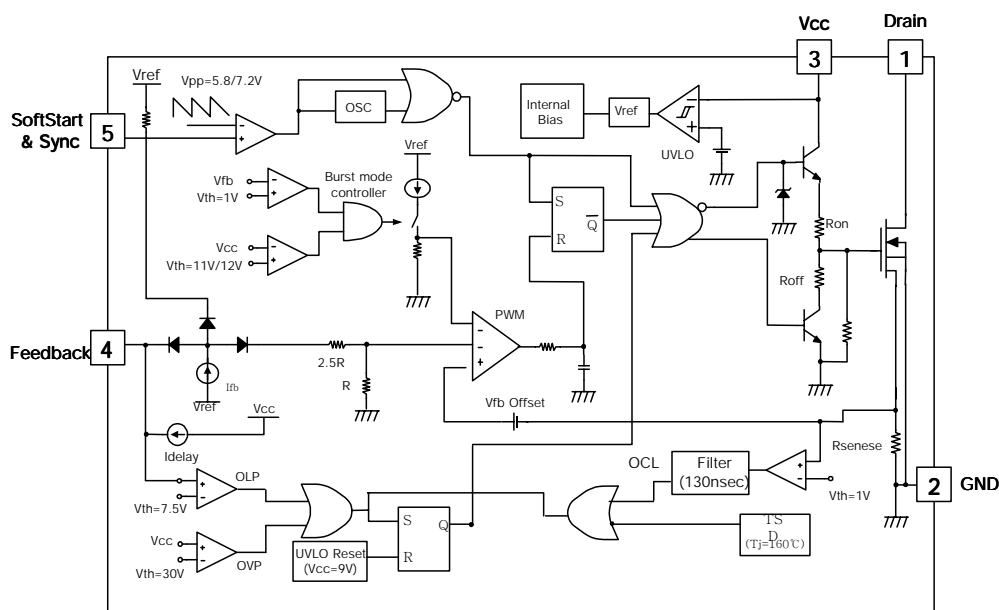
- Wide Operating Frequency Range Up to 150kHz
- Lowest Cost SMPS Solution
- Lowest External Components
- Low Start up Current (Max:170uA)
- Low Operating Current (Max:15mA)
- Internal High Voltage SenseFET
- Built-in Auto Restart Circuit
- Over Voltage Protection (Auto Restart Mode)
- Over Load Protection (Auto Restart Mode)
- Over Current Protection (Auto Restart Mode)
- Internal Thermal Protection (Auto Restart Mode)
- Pulse By Pulse Over Current Limiting
- Internal Burst Mode Controller for Stand-by Mode
- Under Voltage Lockout With Hysteresis
- External Sync. Terminal

### Description

The Fairchild Power Switch(FPS) product family is specially designed for an off line SMPS with minimal external components. The Fairchild Power Switch(FPS) consist of high voltage power SenseFET and current mode PWM IC. Included PWM controller features integrated fixed oscillator, under voltage lock out, optimized gate turn on/turn off driver, thermal shut down protection, over voltage protection, and temperature compensated precision current sources for loop compensation and fault protection circuitry. compared to discrete MOSFET and controller or RCC switching converter solution, a Fairchild Power Switch(FPS) can reduce total component count, design size, and weight and at the same time increase efficiency, productivity, and system reliability. It has a basic platform well suited for cost effective monitor power supply.



### Internal Block Diagram



Rev.1.0.1

## Absolute Maximum Ratings

(Ta=25°C, unless otherwise specified)

| Characteristic  | Symbol                             | Value                   | Unit  |
|---|------------------------------------|-------------------------|-------|
| Drain-Gate Voltage(R <sub>GS</sub> =1MΩ)                                | V <sub>DGR</sub>                   | 650                     | V     |
| Gate-Source(GND) Voltage  | V <sub>GS</sub>                    | ±30                     | V     |
| Drain Current Pulsed <sup>(1)</sup>                                     | I <sub>DM</sub>                    | 48                      | ADC   |
| Continuous Drain Current (T <sub>c</sub> = 25°C)                        | I <sub>D</sub>                     | 12                      | ADC   |
| Continuous Drain Current (T <sub>c</sub> = 100°C)                       | I <sub>D</sub>                     | 8.4                     | ADC   |
| Single Pulsed Avalanche Current <sup>(3)</sup> (Energy <sup>(2)</sup> ) | I <sub>AS</sub> (E <sub>AS</sub> ) | 30(950)                 | A(mJ) |
| Maximum Supply Voltage  | V <sub>CC,MAX</sub>                | 35                      | V     |
| Input Voltage Range   | V <sub>FB</sub>                    | -0.3 to V <sub>CC</sub> | V     |
|   | V <sub>SS</sub>                    | -0.3 to 10              | V     |
| Total Power Dissipation   | P <sub>D</sub> (Watt H/S)          | 240                     | W     |
|   | Darting                            | 1.92                    | W/°C  |
| Operating Junction Temperature.   | T <sub>J</sub>                     | +150                    | °C    |
| Operating Ambient Temperature.  | T <sub>A</sub>                     | -25 to +85              | °C    |
| Storage Temperature Range.  | T <sub>STG</sub>                   | -55 to +150             | °C    |

### Note:

1. Repetitive rating: pulse width limited by maximum junction temperature
2. L = 10mH, starting T<sub>j</sub> = 25°C
3. L = 13uH, starting T<sub>j</sub> = 25°C

## Electrical Characteristics (SFET Part)

(Ta = 25°C unless otherwise specified)

| Parameter  | Symbol  | Conditions   | Min. | Typ. | Max. | Unit |
|--|---------|--|------|------|------|------|
| Drain-Source Breakdown Voltage                   | BVDSS   | VGS = 0V, ID = 50μA  | 650  | -    | -    | V    |
| Zero Gate Voltage Drain Current                  | IDSS    | VDS=Max, Rating, VGS = 0V  | -    | -    | 200  | μA   |
|  |         | VDS= 0.8Max, Rating, VGS = 0V, TC = 125°C  | -    | -    | 300  | μA   |
| Static Drain-Source on Resistance <sup>(1)</sup> | RDS(on) | VGS = 10V, ID = 4.5A   | -    | 0.7  | 0.9  | Ω    |
| Forward Transconductance <sup>(2)</sup>          | gfs     | VDS = 50V, ID = 4.5A   | -    | -    | -    | S    |
| Input Capacitance                                | Ciss    | VGS = 0V, VDS = 25V, f = 1MHz  | -    | 1820 | -    | pF   |
| Output Capacitance                               | Coss    |  | -    | 185  | -    |      |
| Reverse Transfer Capacitance                     | Crss    |  | -    | 32   | -    |      |
| Turn on Delay Time                               | td(on)  | VDD = 0.5BVDSS, ID = 12.0A (MOSFET switching time are essentially independent of operating temperature)            | -    | 38   | -    | nS   |
| Rise Time  | tr      |  | -    | 120  | -    |      |
| Turn Off Delay Time                              | td(off) |  | -    | 200  | -    |      |
| Fall Time  | tf      |  | -    | 100  | -    |      |
| Total Gate Charge (Gate-Source+Gate-Drain)       | Qg      | VGS = 10V, ID = 12.0A, VDS = 0.5BVDSS (MOSFET Switching time are Essentially independent of Operating temperature) | -    | 60   | -    | nC   |
| Gate-Source Charge                               | Qgs     |  | -    | 10   | -    |      |
| Gate-Drain (Miller) Charge                       | Qgd     |  | -    | 30   | -    |      |

### Note:

1. Pulse test: pulse width ≤ 300us, duty 2%

2.  $S = \frac{1}{R}$

**Electrical Characteristics (Control Part)** (Continued)(V<sub>CC</sub>=16V, T<sub>amb</sub> = 25°C unless otherwise specified)

| Parameter                                    | Symbol               | Conditions                                   | Min. | Typ. | Max. | Unit |
|--|----------------------|--|------|------|------|------|
| <b>UVLO SECTION</b>                          |                      |  |      |      |      |      |
| Start Threshold Voltage                      | V <sub>START</sub>   | V <sub>FB</sub> =GND                         | 14   | 15   | 16   | V    |
| Stop Threshold Voltage                       | V <sub>STOP</sub>    | V <sub>FB</sub> =GND                         | 8    | 9    | 10   | V    |
| <b>OSCILLATOR SECTION</b>                    |                      |  |      |      |      |      |
| Initial Frequency                            | F <sub>OSC</sub>     | -  | 22   | 25   | 28   | kHz  |
| Voltage Stability                            | F <sub>STABLE</sub>  | 12V ≤ V <sub>CC</sub> ≤ 23V                  | 0    | 1    | 3    | %    |
| Temperature Stability (Note2)                | ΔF <sub>OSC</sub>    | -25°C ≤ T <sub>a</sub> ≤ 85°C                | 0    | ±5   | ±10  | %    |
| Maximum Duty Cycle                           | D <sub>MAX</sub>     | -  | 92   | 95   | 98   | %    |
| Minimum Duty Cycle                           | D <sub>MIN</sub>     | -  | -    | -    | 0    | %    |
| <b>FEEDBACK SECTION</b>                      |                      |  |      |      |      |      |
| Feedback Source Current                      | I <sub>FB</sub>      | V <sub>FB</sub> =GND                         | 0.7  | 0.9  | 1.1  | mA   |
| Shutdown Feedback Voltage                    | V <sub>SD</sub>      | V <sub>FB</sub> ≥ 6.9V                       | 6.9  | 7.5  | 8.1  | V    |
| Shutdown Delay Current                       | I <sub>DELAY</sub>   | V <sub>FB</sub> =5V                          | 1.6  | 2.0  | 2.4  | μA   |
| <b>SYNC. &amp; SOFTSTART SECTION</b>         |                      |  |      |      |      |      |
| Softstart Voltage                            | V <sub>SS</sub>      | V <sub>FB</sub> =2V                          | 4.7  | 5.0  | 5.3  | V    |
| Softstart Current                            | I <sub>SS</sub>      | V <sub>SS</sub> =0V                          | 0.8  | 1.0  | 1.2  | mA   |
| Sync High Threshold Voltage(Note3)           | V <sub>SYNCH</sub>   | V <sub>CC</sub> =16V, V <sub>FB</sub> =5V    | -    | 7.2  | -    | V    |
| Sync Low Threshold Voltage(Note3)            | V <sub>SYNCL</sub>   | V <sub>CC</sub> =16V, V <sub>FB</sub> =5V    | -    | 5.8  | -    | V    |
| <b>BURST MODE SECTION</b>                    |                      |  |      |      |      |      |
| Burst Mode Low Threshold Voltage             | V <sub>BURL</sub>    | V <sub>FB</sub> =0V                          | 10.4 | 11.0 | 11.6 | V    |
| Burst Mode High Threshold Voltage            | V <sub>BURH</sub>    | V <sub>FB</sub> =0V                          | 11.4 | 12.0 | 12.6 | V    |
| Burst Mode Enable Feedback Voltage           | V <sub>BEN</sub>     | V <sub>CC</sub> =10.5V                       | 0.7  | 1.0  | 1.3  | V    |
| Burst Mode Peak Current Limit(Note4)         | I <sub>BURPK</sub>   | -  | 0.45 | 0.6  | 0.75 | A    |
| Burst Mode Frequency                         | F <sub>BUR</sub>     | V <sub>CC</sub> =10.5V, V <sub>FB</sub> =0V  | 40   | 50   | 60   | kHz  |
| <b>CURRENT LIMIT(SELF-PROTECTION)SECTION</b> |                      |  |      |      |      |      |
| Peak Current Limit (Note4)                   | I <sub>OVER</sub>    | -  | 7.04 | 8.0  | 8.96 | A    |
| <b>PROTECTION SECTION</b>                    |                      |  |      |      |      |      |
| Over Voltage Protection                      | V <sub>OV</sub>      | V <sub>CC</sub> ≥ 27V                        | 27   | 30   | 33   | V    |
| Over Current Latch voltage(Note3)            | V <sub>OCL</sub>     | -  | 0.9  | 1.0  | 1.1  | V    |
| Thermal Shutdown Tempature(Note2)            | T <sub>SD</sub>      | -  | 140  | 160  | -    | °C   |
| <b>TOTAL DEVICE SECTION</b>                  |                      |  |      |      |      |      |
| Start-Up Current                             | I <sub>START</sub>   | V <sub>FB</sub> = GND, V <sub>CC</sub> = 14V | -    | 0.1  | 0.17 | mA   |
| Operating Supply Current(Note1)              | I <sub>OP</sub>      | V <sub>FB</sub> = GND, V <sub>CC</sub> = 16V | -    | 10   | 15   | mA   |
|  | I <sub>OP(MIN)</sub> | V <sub>FB</sub> = GND, V <sub>CC</sub> = 12V |      |      |      |      |
|  | I <sub>OP(MAX)</sub> | V <sub>FB</sub> = GND, V <sub>CC</sub> = 30V |      |      |      |      |

**Notes:**

1. These parameters are the Current Flowing in the Control IC.
2. These parameters, although guaranteed, are not 100% tested in production
3. These parameters, although guaranteed, are tested in EDS(wafer test) process
4. These parameters are indicated Inductor Current.

## Typical Performance Characteristics

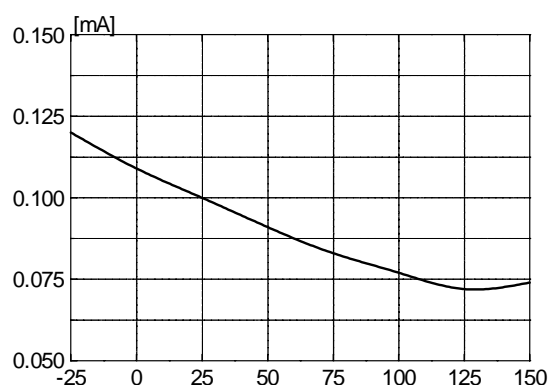


Figure 1. Start Up Current vs. Temp.

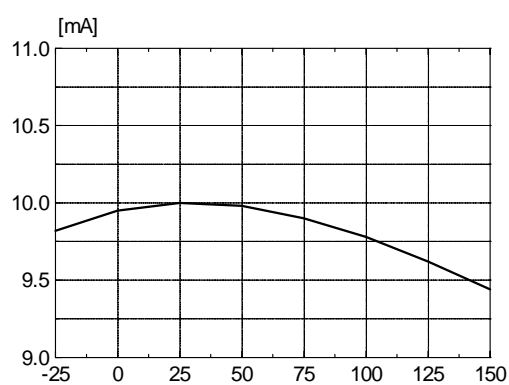


Figure 2. Operating Current vs. Temp.

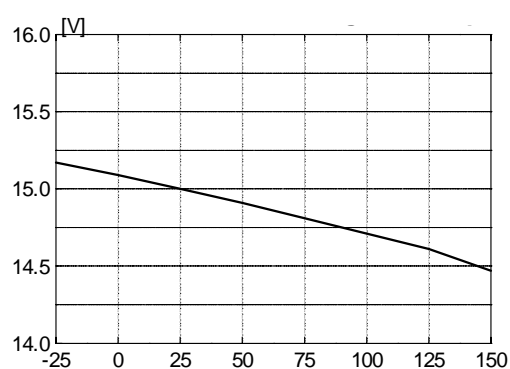


Figure 3. Start Threshold Voltage vs. Temp.

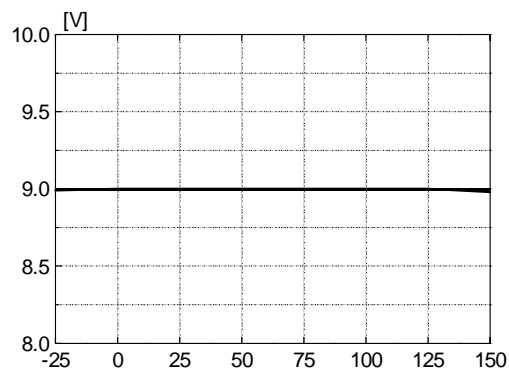


Figure 4. Stop Threshold Voltage vs. Temp.

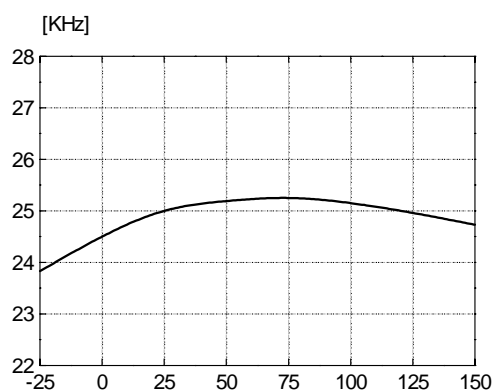


Figure 5. Initial Frequency vs. Temp.

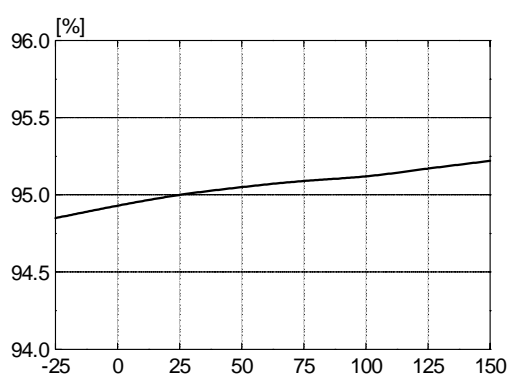


Figure 6. Maximum Duty vs. Temp.

## Typical Performance Characteristics (Continued)

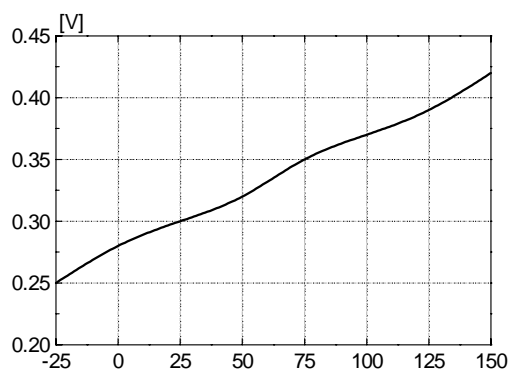


Figure 7. Feedback Offset Voltage vs. Temp.

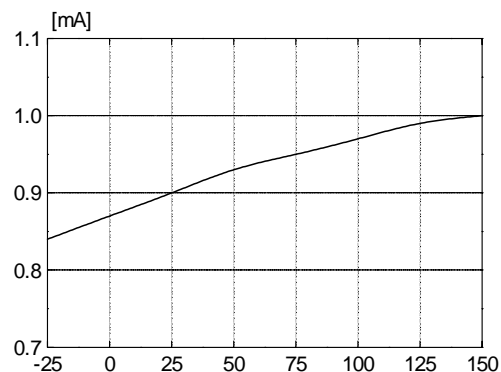


Figure 8. Feedback Source Current vs. Temp.

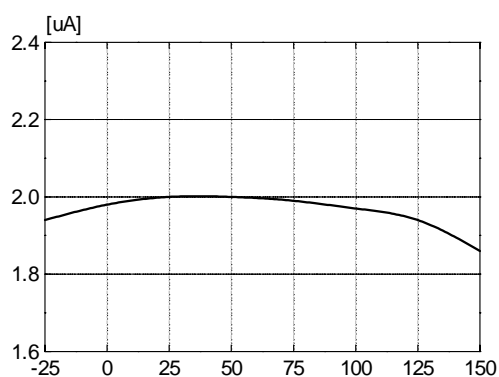


Figure 9. Shutdown Delay Current vs. Temp.

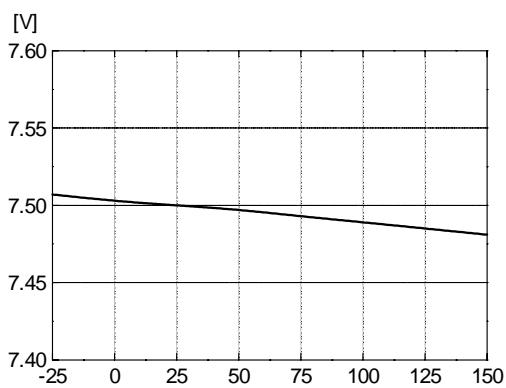


Figure 10. Shutdown Feedback Voltage vs. Temp.

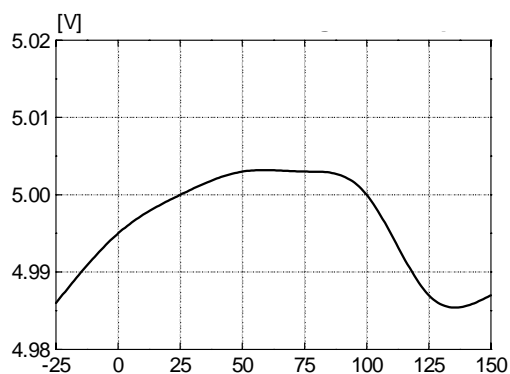


Figure 11. Softstart Voltage vs. Temp.

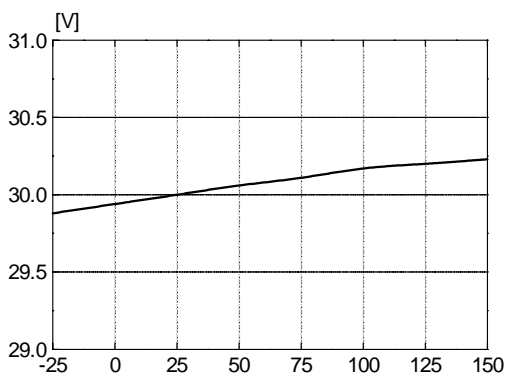


Figure 12. Over Voltage Protection vs. Temp.

## Typical Performance Characteristics (Continued)

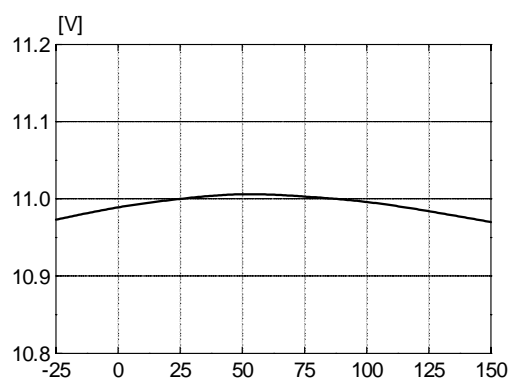


Figure 13. Burst Mode Low Voltage vs. Temp.

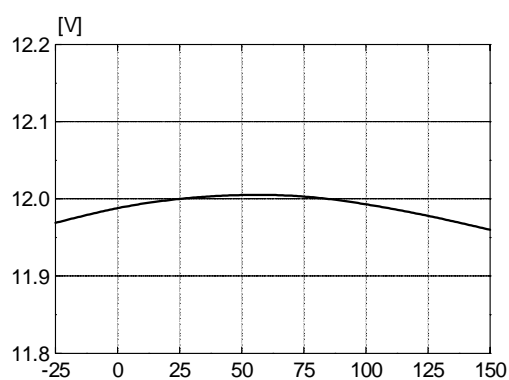


Figure 14. Burst Mode High Voltage vs. Temp.

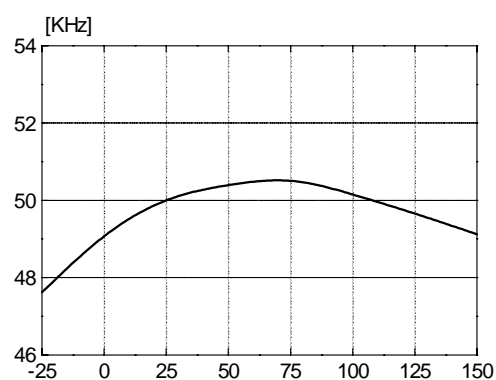


Figure 15. Burst Mode Frequency vs. Temp.

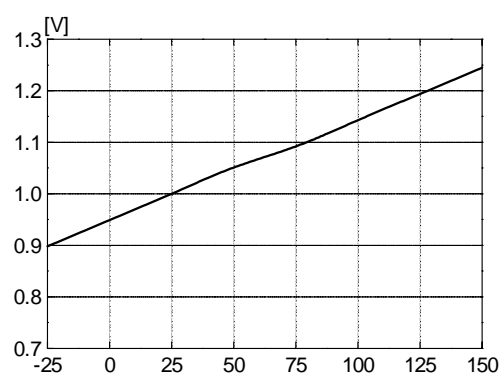


Figure 16. Burst Mode Enable Voltage vs. Temp.

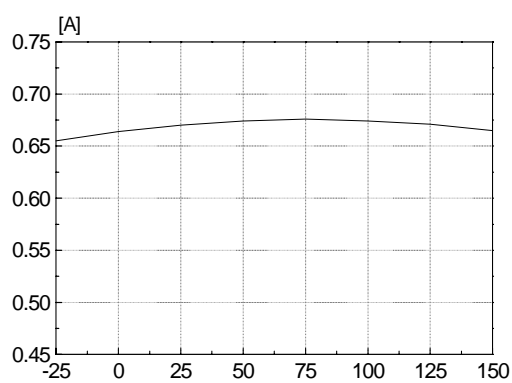


Figure 17. Burst Mode Peak Current vs. Temp.

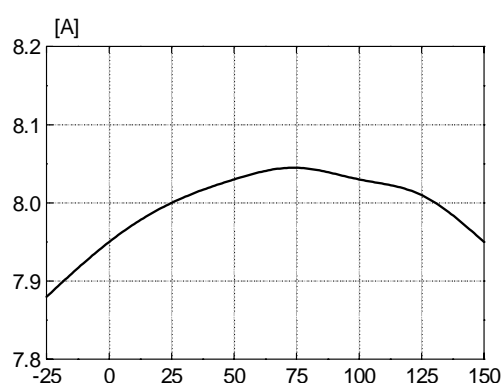


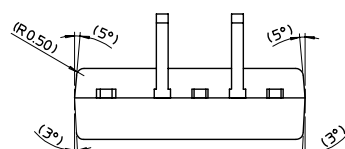
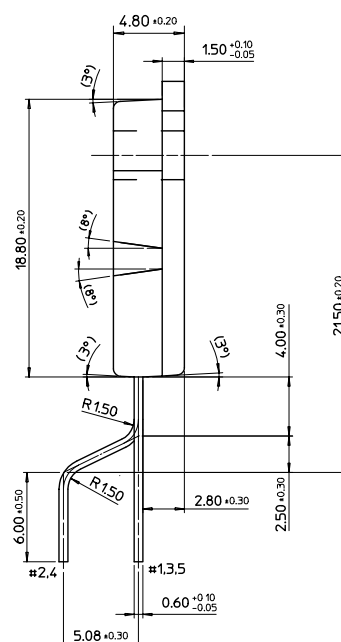
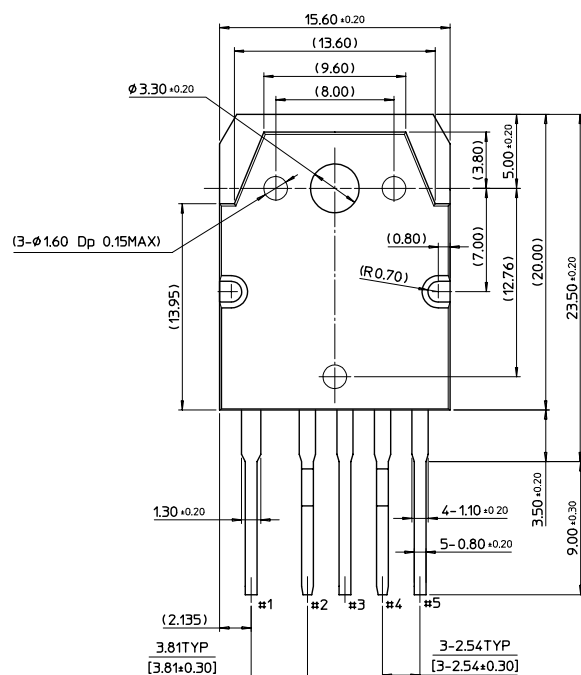
Figure 18. Peak Current Limit vs. Temp.





# Package Dimensions (Continued)

## TO-3P-5L (Forming)



## Ordering Information

| Product Number | Package           | Marking Code | BVdss | Rds(on) |
|----------------|-------------------|--------------|-------|---------|
| FS6S1265RETU   | TO-3P-5L          | 6S1265R<br>E | 650V  | 0.7Ω    |
| FS6S1265REYDTU | TO-3P-5L(Forming) |              |       |         |

TU : Non Forming Type

YDTU : Forming Type

### DISCLAIMER

FAIRCHILD SEMICONDUCTOR RESERVES THE RIGHT TO MAKE CHANGES WITHOUT FURTHER NOTICE TO ANY PRODUCTS HEREIN TO IMPROVE RELIABILITY, FUNCTION OR DESIGN. FAIRCHILD DOES NOT ASSUME ANY LIABILITY ARISING OUT OF THE APPLICATION OR USE OF ANY PRODUCT OR CIRCUIT DESCRIBED HEREIN; NEITHER DOES IT CONVEY ANY LICENSE UNDER ITS PATENT RIGHTS, NOR THE RIGHTS OF OTHERS.

### LIFE SUPPORT POLICY

FAIRCHILD'S PRODUCTS ARE NOT AUTHORIZED FOR USE AS CRITICAL COMPONENTS IN LIFE SUPPORT DEVICES OR SYSTEMS WITHOUT THE EXPRESS WRITTEN APPROVAL OF THE PRESIDENT OF FAIRCHILD SEMICONDUCTOR CORPORATION. As used herein:

1. Life support devices or systems are devices or systems which, (a) are intended for surgical implant into the body, or (b) support or sustain life, and (c) whose failure to perform when properly used in accordance with instructions for use provided in the labeling, can be reasonably expected to result in a significant injury of the user.
2. A critical component in any component of a life support device or system whose failure to perform can be reasonably expected to cause the failure of the life support device or system, or to affect its safety or effectiveness.

ON Semiconductor and  are trademarks of Semiconductor Components Industries, LLC dba ON Semiconductor or its subsidiaries in the United States and/or other countries. ON Semiconductor owns the rights to a number of patents, trademarks, copyrights, trade secrets, and other intellectual property. A listing of ON Semiconductor's product/patent coverage may be accessed at [www.onsemi.com/site/pdf/Patent-Marking.pdf](http://www.onsemi.com/site/pdf/Patent-Marking.pdf). ON Semiconductor reserves the right to make changes without further notice to any products herein. ON Semiconductor makes no warranty, representation or guarantee regarding the suitability of its products for any particular purpose, nor does ON Semiconductor assume any liability arising out of the application or use of any product or circuit, and specifically disclaims any and all liability, including without limitation special, consequential or incidental damages. Buyer is responsible for its products and applications using ON Semiconductor products, including compliance with all laws, regulations and safety requirements or standards, regardless of any support or applications information provided by ON Semiconductor. "Typical" parameters which may be provided in ON Semiconductor data sheets and/or specifications can and do vary in different applications and actual performance may vary over time. All operating parameters, including "Typicals" must be validated for each customer application by customer's technical experts. ON Semiconductor does not convey any license under its patent rights nor the rights of others. ON Semiconductor products are not designed, intended, or authorized for use as a critical component in life support systems or any FDA Class 3 medical devices or medical devices with a same or similar classification in a foreign jurisdiction or any devices intended for implantation in the human body. Should Buyer purchase or use ON Semiconductor products for any such unintended or unauthorized application, Buyer shall indemnify and hold ON Semiconductor and its officers, employees, subsidiaries, affiliates, and distributors harmless against all claims, costs, damages, and expenses, and reasonable attorney fees arising out of, directly or indirectly, any claim of personal injury or death associated with such unintended or unauthorized use, even if such claim alleges that ON Semiconductor was negligent regarding the design or manufacture of the part. ON Semiconductor is an Equal Opportunity/Affirmative Action Employer. This literature is subject to all applicable copyright laws and is not for resale in any manner.

## PUBLICATION ORDERING INFORMATION

### LITERATURE FULFILLMENT:

Literature Distribution Center for ON Semiconductor  
19521 E. 32nd Pkwy, Aurora, Colorado 80011 USA  
**Phone:** 303-675-2175 or 800-344-3860 Toll Free USA/Canada  
**Fax:** 303-675-2176 or 800-344-3867 Toll Free USA/Canada  
**Email:** [orderlit@onsemi.com](mailto:orderlit@onsemi.com)

**N. American Technical Support:** 800-282-9855 Toll Free  
USA/Canada

**Europe, Middle East and Africa Technical Support:**  
Phone: 421 33 790 2910

**Japan Customer Focus Center**  
Phone: 81-3-5817-1050

**ON Semiconductor Website:** [www.onsemi.com](http://www.onsemi.com)

**Order Literature:** <http://www.onsemi.com/orderlit>

For additional information, please contact your local  
Sales Representative