

- WHEN REQUIRED, ADD SUFFIX LETTER "LF"  
INDICATES THE PRODUCT IS RoHS  
COMPATIBLE, SEE NOTE 7
- TOTAL NB OF POSITIONS, 8 TO 50
- PACKAGING TYPE, NOTE 3

1=0.76 $\mu$ m GOLD/GXT ON CONTACT AREA  
3.81 $\mu$ m TIN-LEAD ON TAIL

4=3.81 $\mu$ m TIN-LEAD ON CONTACT AREA  
AND ON TAIL

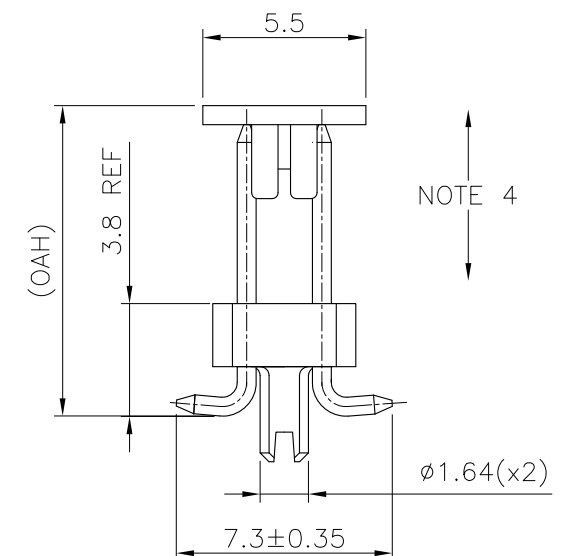
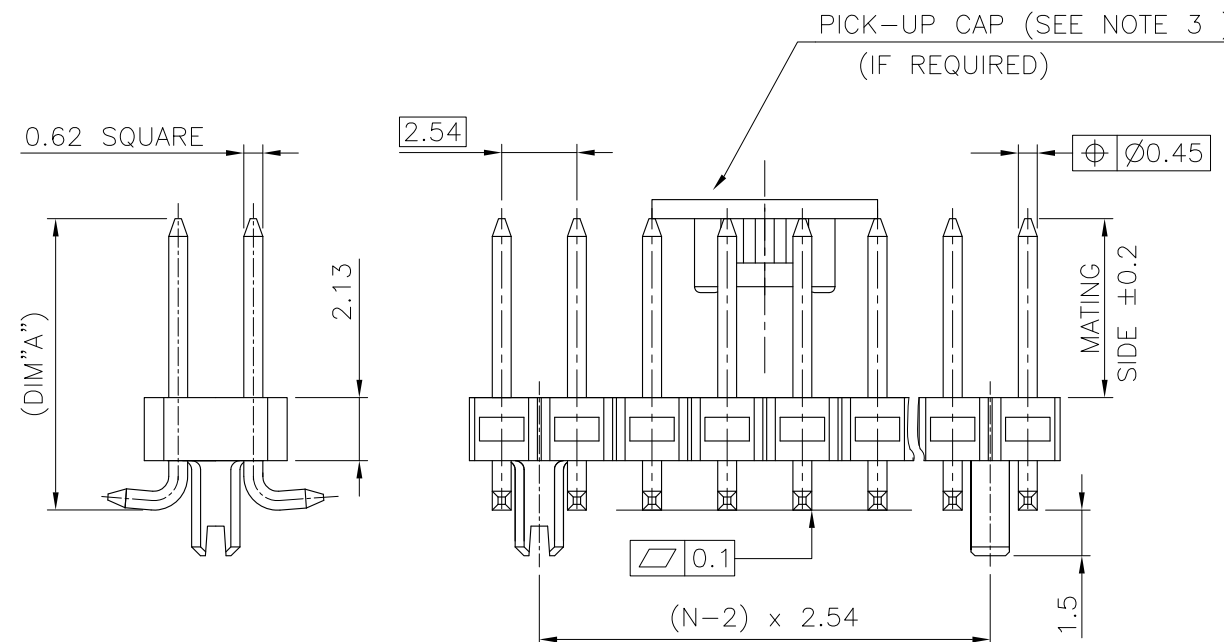
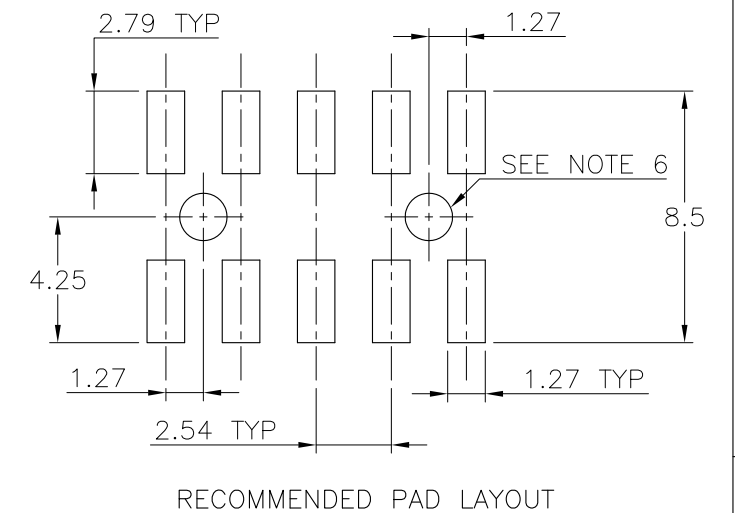
8=0.38 $\mu$ m GOLD/GXT ON CONTACT AREA  
3.81 $\mu$ m TIN-LEAD ON TAIL

PIN STYLE	MATING	DIM"A"	OAH
01	5.84	9.6	10.2
02	8.08	11.8	12.4
03	13.00	16.8	17.4
06	10.50	14.3	14.9
07	14.50	18.3	18.9

NOTES:

1. HOUSING MAT'L : HIGH TEMPERATURE THERMOPLASTIC. UL94V-0 COLOR: BLACK
2. PIN MATERIAL : PHOSPHOR BRONZE
3. PACKAGING
  - = POLY BAGS
  - A = TAPE & REEL WITH PICK UP CAP  
(SEE TA840 FOR PRODUCT AVAILABILITY )
  - TV = TUBE WITHOUT PICK UP CAP FOR VALEO
  - K = TARE & REEL WITHOUT PICK-UP CAP.
4. 9N MIN RETENTION IN EITHER DIRECTION
5. TO DETERMINE DIMENSIONS :  
N = NUMBER OF POSITIONS PER ROW  
EXAMPLE : 8 POS     $N \times 2.54 = 20.32\text{mm}$
6. HOLE DIMENSION TO BE  $\phi 1.6 \pm 0.03$  FOR INTERFERENCE FIT APPLICATIONS.  
HOLE DIMENSIONS TO BE  $\phi 1.95 \pm 0.05$  FOR LOCATION APPLICATION WITH AUTOMATIC PICK AND PLACE MACHINES.
7. RoHS COMPATIBLE PRODUCT SPECIFICATIONS

- 
- Technical drawing of a multi-pin connector. The drawing shows a side view of the connector with dimensions in millimeters. The overall width is labeled as  $N \times 2.54$  MAX. The distance between the centers of the pins is labeled as  $(N-1) \times 2.54$ . The height of the connector is labeled as 4.83. The distance from the top of the connector to the center of the pins is labeled as 1.145. The distance from the bottom of the connector to the center of the pins is labeled as 2.54. The drawing also includes a note: NOTE 5. The drawing shows a central rectangular area with a width of 7.62. The drawing includes a note: NOTE 5. The drawing shows a central rectangular area with a width of 7.62.

[illegible]

# Mouser Electronics

Authorized Distributor

Click to View Pricing, Inventory, Delivery & Lifecycle Information:

FCI:

[98401-102-40LF](#)