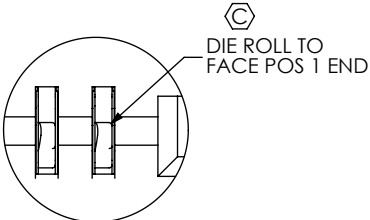
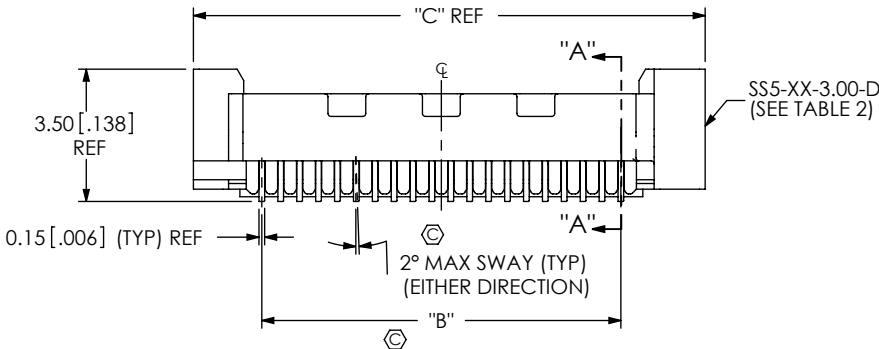
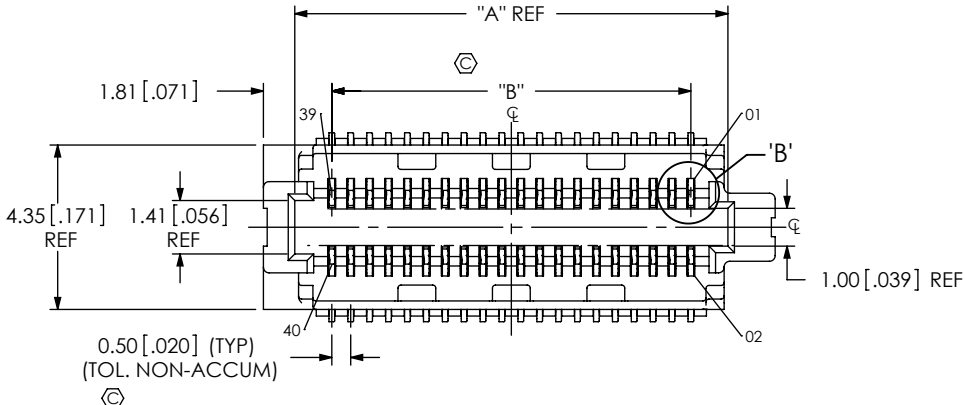


**DESIGNED & DIMENSIONED
IN MILLIMETERS[INCHES]**

DO NOT
SCALE FROM
THIS PRINT



DETAIL 'B'

SCALE 15 : 1

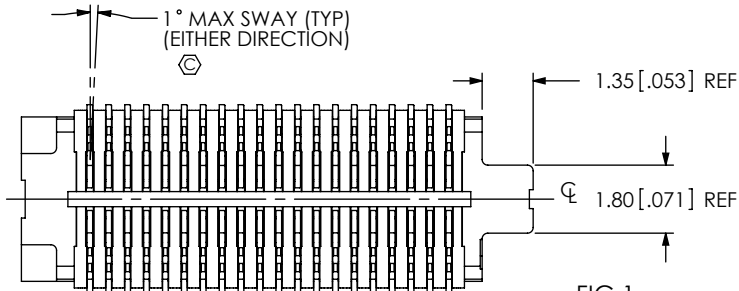


FIG 1
SS5-20-3.00-X-D-K-TR SHOWN

SS5-XX-X.XX-X-D-K-TR

No OF POSITIONS—
-10, -15, -20, -30, -40, -50
-60, -70, -80 (PER ROW)

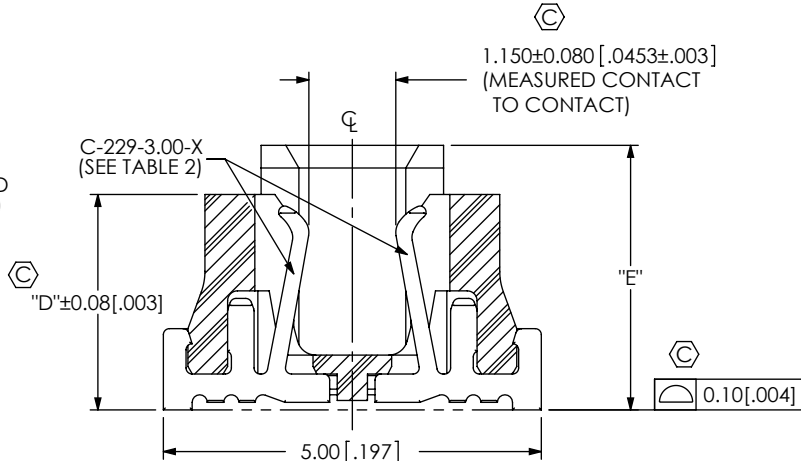
-PACKAGING
-TR: TAPE AND REEL
(SEE NOTE 3)

LEAD STYLE—
-3.00: (USE C-229-3.00-X)
-3.50: (USE C-229-3.50-X)

— PLACEMENT PAD
-K: KAPTON PAD
(USE K-DOT-.138-.250-.005)
(SEE FIG 3, SHT 2)

PLATING SPECIFICATION
-L: 10μ" SELECTIVE GOLD
IN CONTACT AREA,
MATTE TIN ON TAIL

-D: DOUBLE



SECTION "A"- "A"


SCALE 10 : 1

TABLE 1

No OF POS	"A"	"B"	"C"
-10	6.46 [0.254]	4.50 [0.177]	8.54 [0.336]
-15	8.96 [0.353]	7.00 [0.276]	11.04 [0.435]
-20	11.46 [0.451]	9.50 [0.374]	13.54 [0.533]
-30	16.46 [0.648]	14.50 [0.571]	18.54 [0.730]
-40	21.46 [0.845]	19.50 [0.768]	23.54 [0.927]
-50	26.46 [1.042]	24.50 [0.965]	28.54 [1.124]
-60	31.46 [1.239]	29.50 [1.161]	33.54 [1.320]
-70	36.46 [1.435]	34.50 [1.358]	38.54 [1.517]
-80	41.46 [1.632]	39.50 [1.555]	43.54 [1.714]

LEAD STYLE	"D"	"E"	BODY	CONTACT
-3.00	2.85 [0.112]	3.50 [0.138]	SS5-XX-3.00-D	C-229-3.00-X
-3.50	3.35 [0.132]	4.00 [0.157]	SS5-XX-3.00-D	C-229-3.50-X

NOTES:

1.  REPRESENTS A CRITICAL DIMENSION.
2. MINIMUM PUSHOUT FORCE: 1.11N[.5 LB].
3. FOR QUANTITIES UP TO 49 PIECES, NO LEADER, TRAILER, OR REEL WILL BE SUPPLIED.
FOR QUANTITIES OF 50-124 PIECES, NO LEADER OR TRAILER WILL BE SUPPLIED.

UNLESS OTHERWISE SPECIFIED,
DIMENSIONS ARE IN MILLIMETERS.
TOLERANCES ARE:

DECIMALS	ANGLES
.X: ± 0.3 [.01]	2°
.XX: ± 0.13 [.005]	
.XXX: ± 0.051 [.0020]	

PROPRIETARY NOTE

THIS DOCUMENT CONTAINS INFORMATION
CONFIDENTIAL AND PROPRIETARY TO
SAMTEC, INC. AND SHALL NOT BE REPRODUCED
OR TRANSFERRED TO OTHER DOCUMENTS OR
DISCLOSED TO OTHERS OR USED FOR ANY
PURPOSE OTHER THAN THAT WHICH IT WAS
OBTAINED WITHOUT THE EXPRESSED WRITTEN
CONSENT OF SAMTEC, INC.

MATERIAL: DO NOT SCALE DRAWING

INSULATOR: LCP, COLOR: BLACK
CONTACT: PHOS BRONZE

F:\DWG\MISC\MKTG\SS5-XX-X.XX-X-D-K-TR-MKT.SLDDRW

DESCRIPTION:

0.50mm SOCKET STRIP ASSEMBLY

DWG. NO.

SS5-XX-X.XX-X-D-K-TR

BY: VICKY Z 04/02/2012 SHEET 1 OF 2

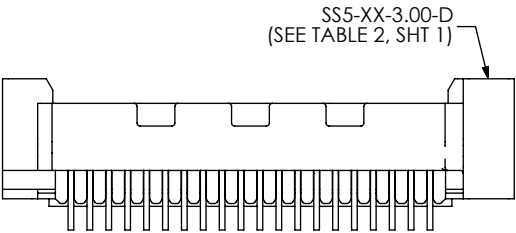


FIG 2
SS5-20-3.50-X-D SHOWN
(DIFFERENT AS SHOWN, OTHERWISE SAME AS FIG 1)

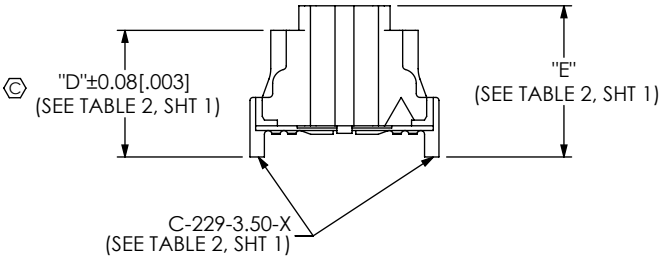


TABLE 3 REF			
STACK HEIGHT			
SS5 LEAD STYLE	ST5 LEAD STYLE		
	-1.00	-1.50	** -2.50
-3.00	4.0MM	4.5MM	5.5MM
-3.50	4.5MM	5.0MM	6.0MM

(** = NOT TOOLED)

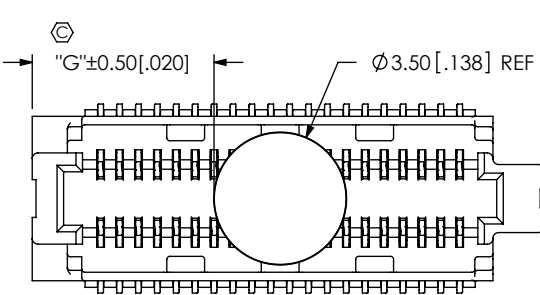


FIG 3
-K: KAPTON OPTION
SS5-20-3.00-X-D-K SHOWN
(USE K-DOT-.138-.250-.005)
(DIFFERENT AS SHOWN, OTHERWISE SAME AS FIG 1)

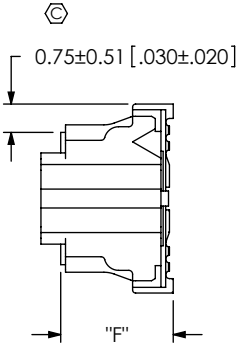



TABLE 4	
LEAD STYLE	"F"
-3.00	2.98 [0.117]
-3.50	3.48 [0.137]

TABLE 5	
No OF POS	"G"
-10	2.31 [0.091]
-15	3.56 [0.140]
-20	4.81 [0.189]
-30	7.31 [0.288]
-40	9.81 [0.386]
-50	12.31 [0.485]
-60	14.81 [0.583]
-70	17.31 [0.681]
-80	19.81 [0.780]

F:\DWG\MISC\MKTG\SS5-XX-X.XX-X-D-K-TR-MKT.SLDDRW

<p>PROPRIETARY NOTE</p> <p>THIS DOCUMENT CONTAINS INFORMATION CONFIDENTIAL AND PROPRIETARY TO SAMTEC, INC. AND SHALL NOT BE REPRODUCED OR TRANSFERRED TO OTHER DOCUMENTS OR DISCLOSED TO OTHERS OR USED FOR ANY PURPOSE OTHER THAN THAT WHICH IT WAS OBTAINED WITHOUT THE EXPRESSED WRITTEN CONSENT OF SAMTEC, INC.</p> <p>DO NOT SCALE DRAWING</p> <p>SHEET SCALE: 5:1</p>			
	<p>520 PARK EAST BLVD, NEW ALBANY, IN 47150 PHONE: 812-944-6733 FAX: 812-948-5047 e-Mail: info@SAMTEC.com code: 55322</p>		
	<p>DESCRIPTION: 0.50mm SOCKET STRIP ASSEMBLY</p>		
	<p>DWG. NO. SS5-XX-X.XX-X-D-K-TR</p>		
BY: VICKY Z		04/02/2012	SHEET 2 OF 2